



Recommended Actions

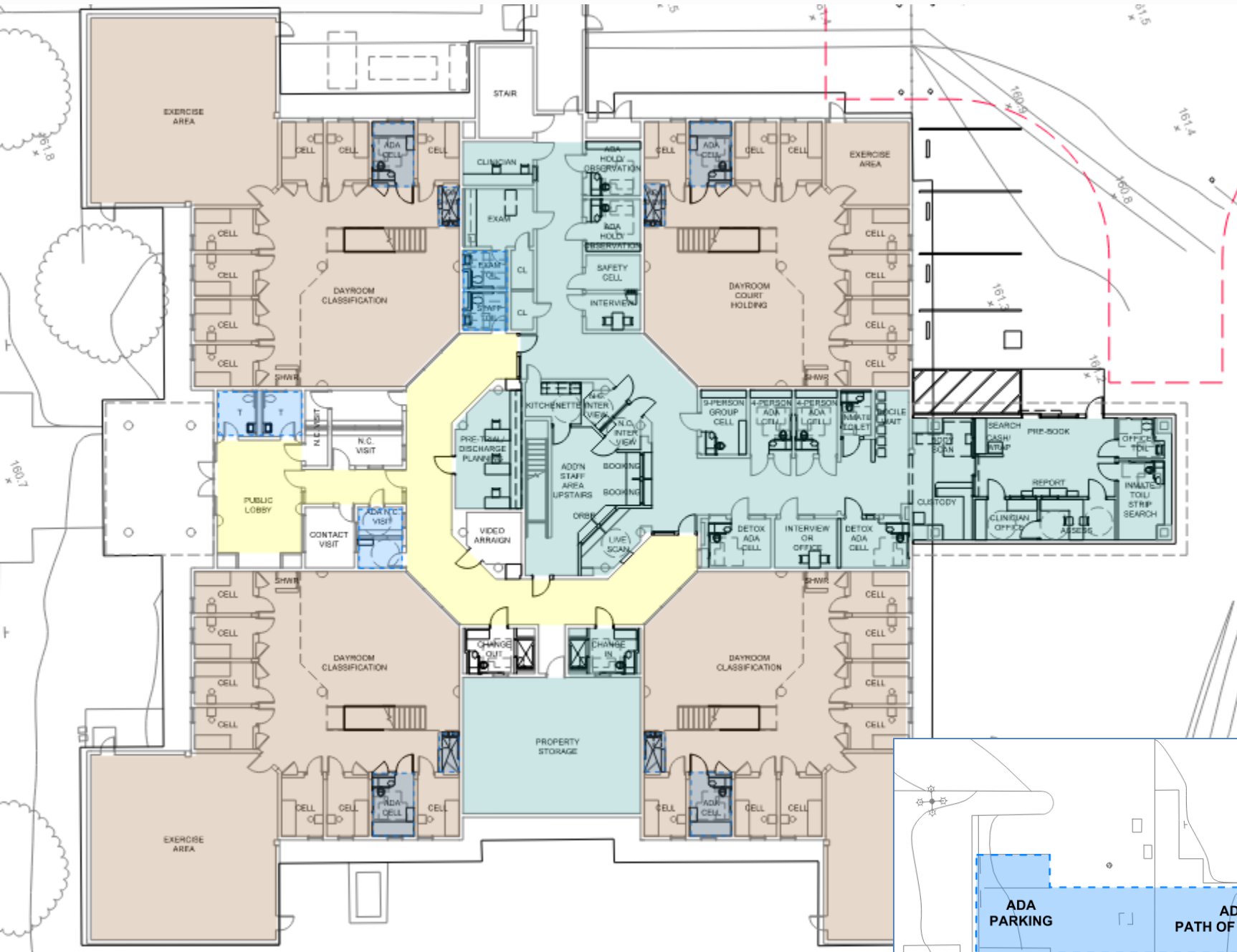
It is recommended that the Board of Supervisors:

- Receive a report on conceptual options for renovations at the Main Jail and new construction at the Northern Branch Jail;
- Regarding the Main Jail, direct staff to proceed with a minimized renovation plan that addresses the Inmate Reception Center, makes Americans with Disabilities Act (ADA) improvements, and eliminates use of other beds, as detailed in this report;
- Regarding the Northern Branch Jail:
 - direct staff to proceed with obtaining designs for Option 1 (new construction of one pod for a total jail system of 728 beds) and prior to final design, return to the Board with targeted diversion strategies to addresses jail population management, sustainable jail staffing, and identified savings or other revenues to fund the strategies, OR
 - direct staff to proceed with obtaining designs for Option 1.5 (new construction of 1.5 pods for a total jail system of 859 beds), OR
 - direct staff to proceed with obtaining designs for Option 2 (new construction of 2 pods for a total jail system of 984 beds);
- Provide other direction as appropriate; and
- Find that these actions to be exempt from the provisions of the California Environmental Quality Act (CEQA) pursuant to State CEQA Guidelines Section 15262 as a feasibility and planning study for possible future actions that have not been approved, adopted, or funded, and direct staff to file a notice of exemption on that basis.

South County Main Jail – Site Plan



Base Renovations - IRC Improvements

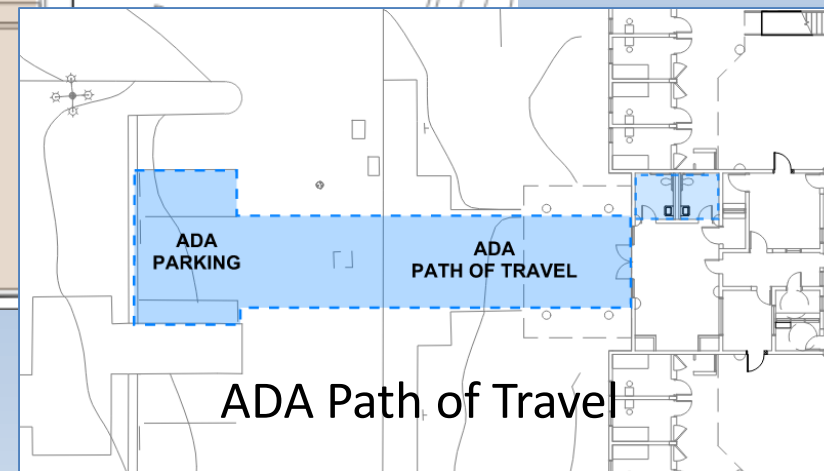


Addresses Stipulated Judgement

- Intake Improvements: Med. & MH screening, privacy
- Accessibility compliance: cells, showers, public restrooms, visiting, and inmate toilets
- ADA path-of-travel to public parking required

Base Project

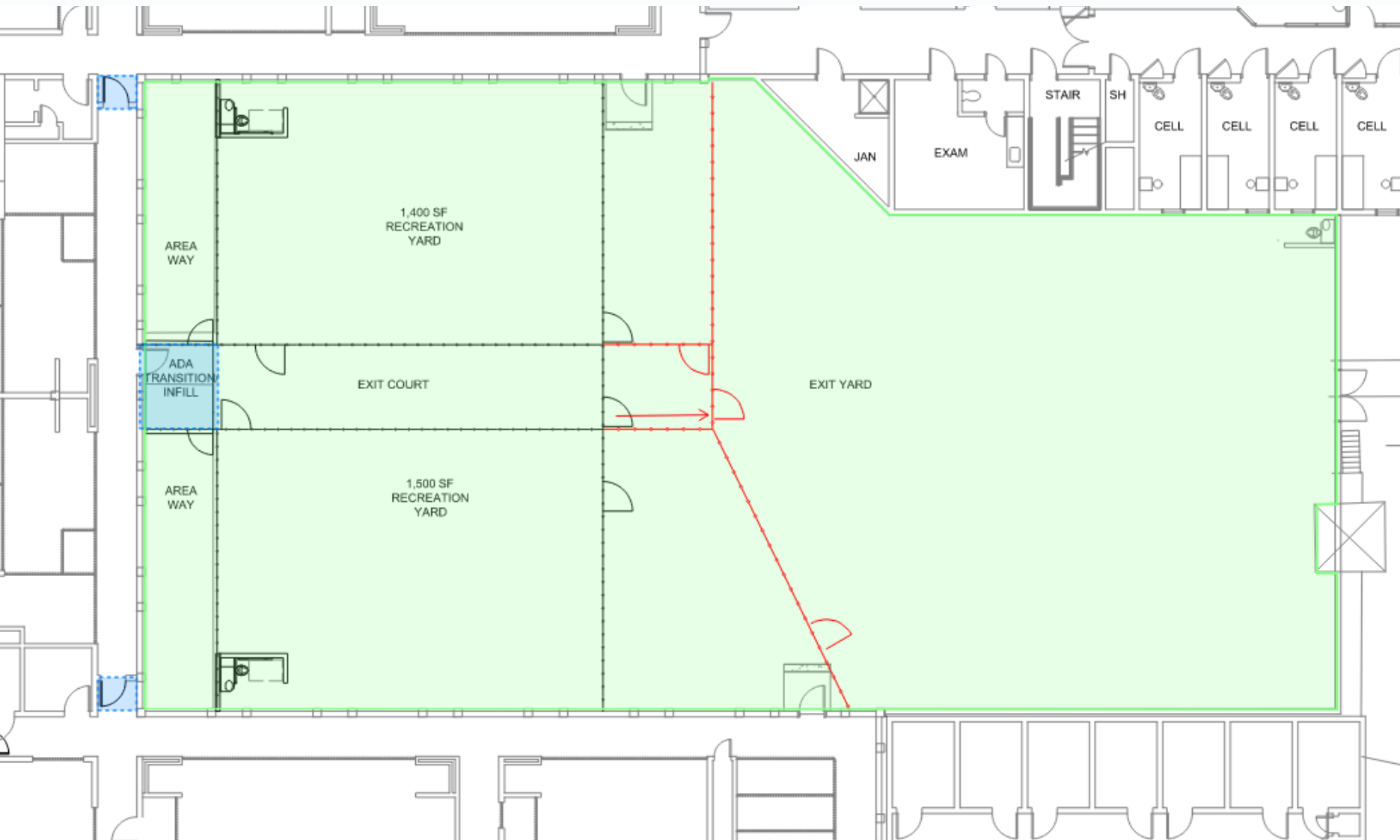
- IRC Renovation - \$8,026,377
- IRC ADA 4 Pods - \$2,456,831
- Deferred Maintenance - \$5,600,000
- Capacity to 128-beds
- Schedule - 27 months



ADA Path of Travel



Base Renovations - MJ Recreation Yard Separation



Addresses Stipulated Judgement

- Creates three separate yards
 - Three access points from existing doors
 - Improvement toward out-of-cell time requirements
-
- Base Project
 - New yards - \$1,470,188
 - Change in beds – 0
 - Schedule - 11 months

Base Renovations at Main Jail

Main Jail Projects

Base Project

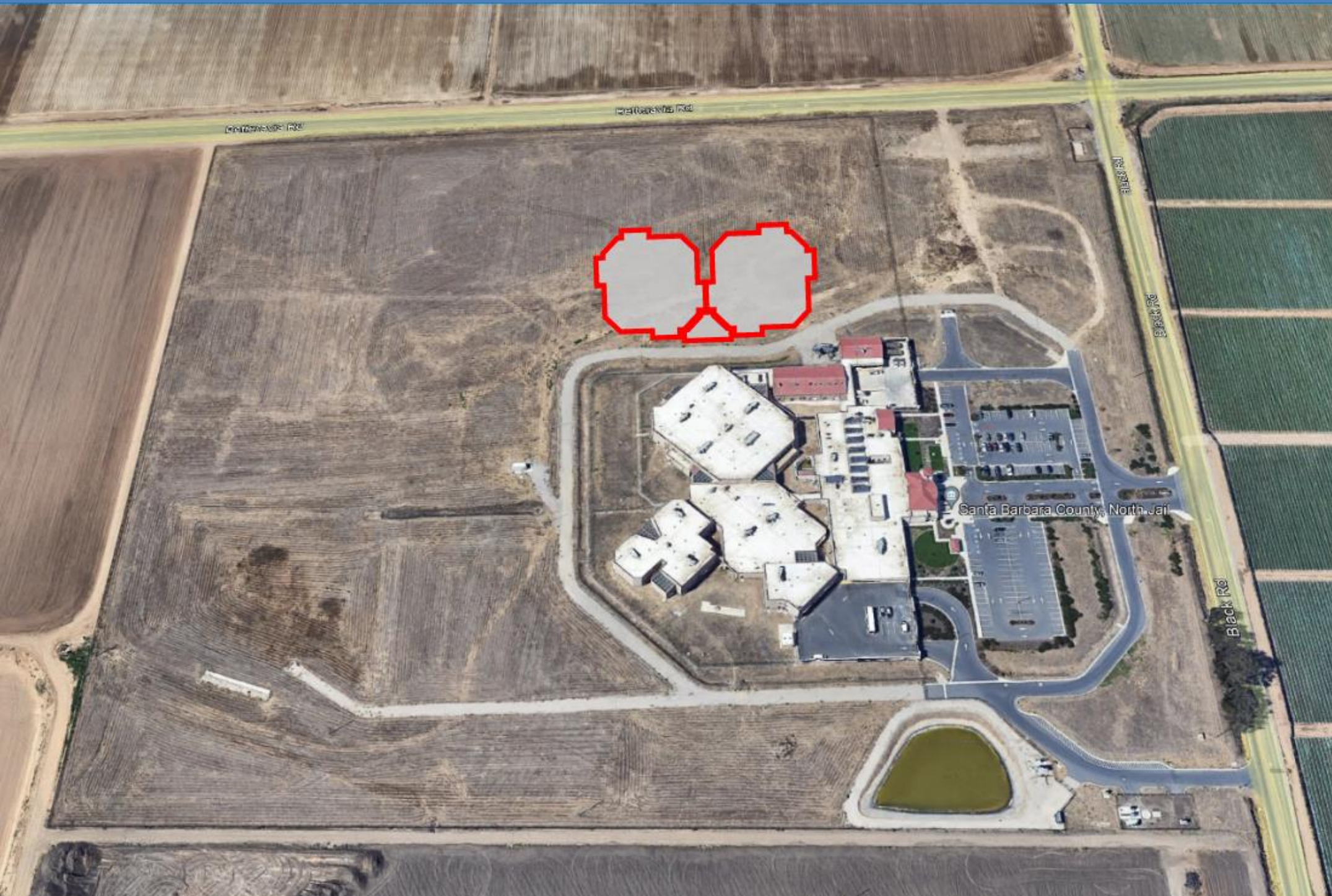
- IRC ADA Compliance: \$2,456,831
- IRC Renovations to Intake: \$8,026,377
- Reconfigure Main Jail yards - \$1,470,188

Deferred Maintenance

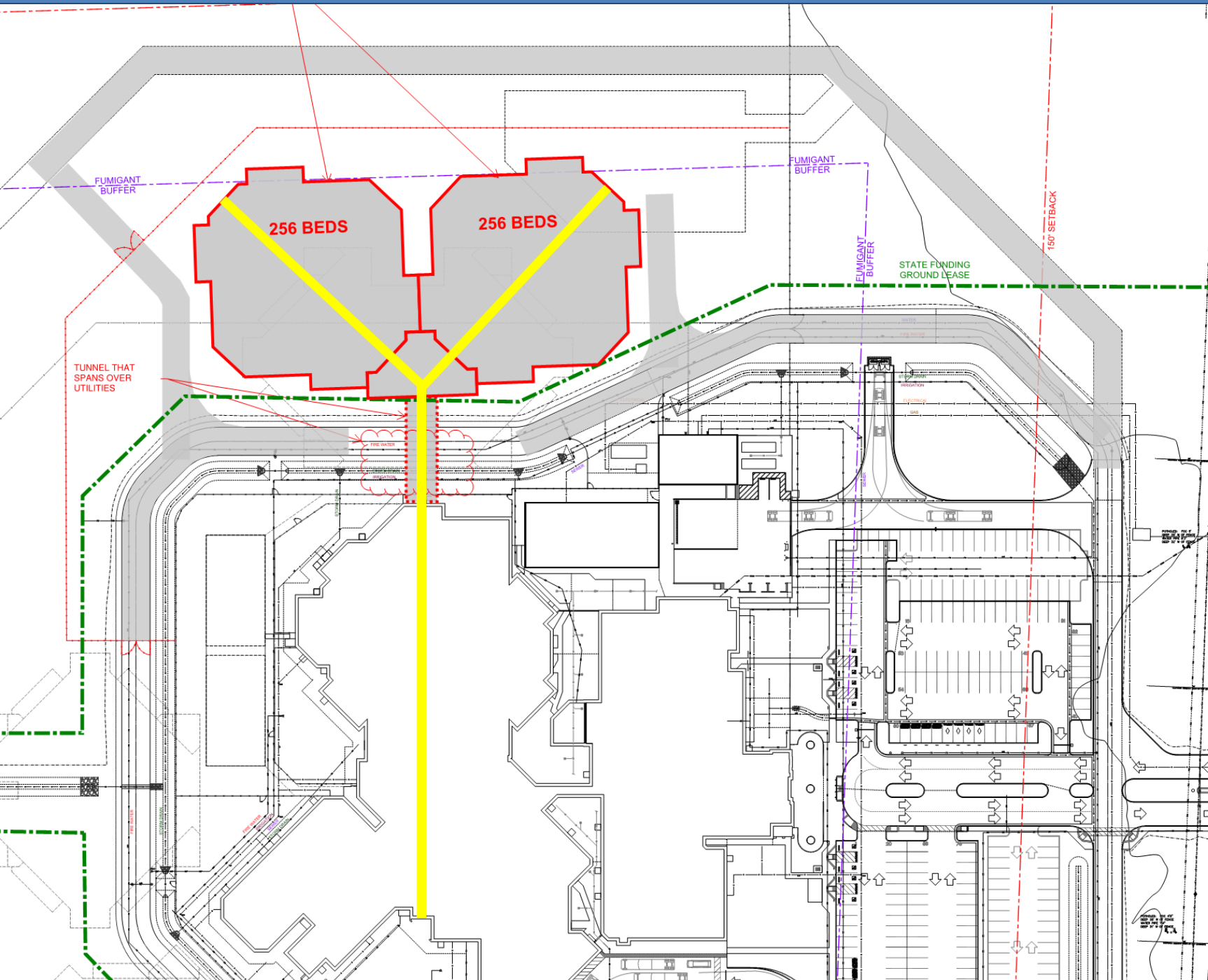
- \$ 5,600,000

TOTAL MAIN JAIL ESTIMATE: \$17,533,396

North Branch Jail – Site Plan



NBJ – Housing Options



- 1 Pod - \$76,597,174
 - New beds – 256
 - Total system beds – 728
 - Schedule – 61 months
- 1.5 Pods - \$114,895,761
 - New beds – 384
 - Total system beds – 856
 - Schedule – 65 months
- 2 Pods - \$142,607,318
 - New beds – 512
 - Total system beds – 984
 - Schedule – 69 months

Overview of Potential Development Options & Cost Estimates

NBJ Expansion Options	Total Jail System Beds	NBJ Estimated Cost	Funding source for NBJ New Construction Costs only	Main Jail Improvements & Deferred Maintenance	Total Estimated Cost
Option 1: NBJ Construction - 1 Pod	728	\$76,597,174	Est. \$5.4M annually in debt service, funded through staffing and operational savings	\$17,553,396	\$94,150,570
Option 1.5: NBJ Construction - 1.5 Pods	856	\$114,895,761	Est. \$8.3M annually in debt service. Gap of \$2.4M annually.	\$17,553,396	\$132,449,157
Option 2: NBJ Construction - 2 Pods	984	\$142,607,318	Est. \$10M annually in debt service. Gap of \$4M to \$5.8M annually.	\$17,553,396	\$160,160,714



Jail Population Reductions

- Option 1 (1 Pod) aligns funding, likely staffing and compliance by reducing the jail bed capacity to 728 beds system-wide.
- Jail population management efforts have been occurring over the last several years by the criminal justice agencies. Focused jail population reduction planning would continue—expanded alternative sentencing, felony diversion, early representation, Familiar Faces program, etc.—and increased emphasis on the seriously mentally ill population will need to occur.
- Overall jail population must remain within the system's capacity to staff appropriately – meeting custody staffing, medical, and behavioral health needs.
- Within the next year, and prior to final design, we will return to the Board with specific, targeted strategies to address jail population management, sustainable jail staffing, and identified savings or other revenues to fund the strategies.
- Reporting back to the Board in this timeframe would allow General Services staff to alter the design plans if circumstances change.

Recommended Actions

It is recommended that the Board of Supervisors:

- Receive a report on conceptual options for renovations at the Main Jail and new construction at the Northern Branch Jail;
- Regarding the Main Jail, direct staff to proceed with a minimized renovation plan that addresses the Inmate Reception Center, makes Americans with Disabilities Act (ADA) improvements, and eliminates use of other beds, as detailed in this report;
- Regarding the Northern Branch Jail, **direct staff to proceed with obtaining designs for Option 1 (new construction of one pod for a total jail system of 728 beds) and prior to final design, return to the Board with targeted diversion strategies to addresses jail population management, sustainable jail staffing, and identified savings or other revenues to fund the strategies;**
- Provide other direction as appropriate; and
- Find that these actions to be exempt from the provisions of the California Environmental Quality Act (CEQA) pursuant to State CEQA Guidelines Section 15262 as a feasibility and planning study for possible future actions that have not been approved, adopted, or funded, and direct staff to file a notice of exemption on that basis.

Questions and Answers

Project Timelines

Project	2023												2024												2025												2026												2027												2028												2029																						
	J	F	M	A	M	J	J	A	S	O	N	D	J	F	M	A	M	J	J	A	S	O	N	D	J	F	M	A	M	J	J	A	S	O	N	D	J	F	M	A	M	J	J	A	S	O	N	D	J	F	M	A	M	J	J	A	S	O	N	D	J	F	M	A	M	J	J	A	S	O	N	D	J	F	M	A	M	J	J	A	S	O	N	D	J	F	M	A	M	J	J	A	S	O	N
SMJ Yard Separation																																																																																															
IRC Intake Renovation																																																																																															
IRC ADA Improvements 4 Pods																																																																																															
NBJ Construction 1 Pod																																																																																															
NBJ Construction 1.5 Pod																																																																																															
NBJ Construction 2 Pod																																																																																															