

Community of  
Los Alamos

LOS ALAMOS  
COUNTY PARK

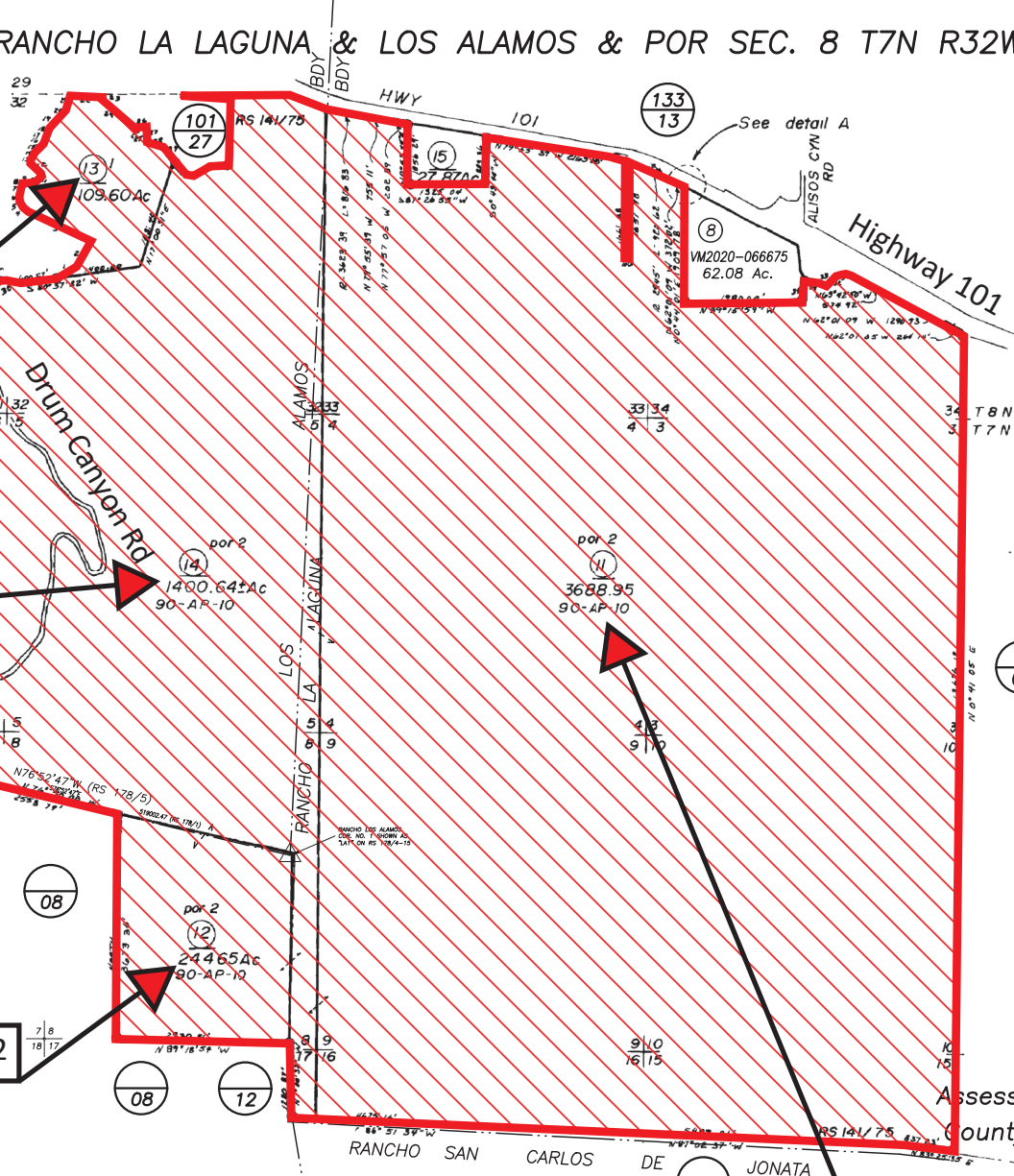
APN 099-050-013

APN 099-050-014

APN 099-050-012

**NOTICE**

Assessor Parcels are for tax assessment purposes only and do not indicate either parcel legality or a valid building site.



- 1 S56°02'39"W 372.89'
- 2 S31°10'37"W 490.60'
- 3 S65°30'45"E 1157.67'
- 4 S45°45'30"E 168.91'
- 5 S35°01'30"E 110.73'
- 6 S02°51'00"W 101.82'
- 7 S15°35'30"W 76.08'
- 8 S40°53'30"W 76.14'
- 9 S83°54'00"W 95.77'
- 10 S85°29'00"W 128.08'
- 11 S36°11'00"W 181.92'
- 12 S45°45'30"E 200.69'
- 13 S51°36'00"E 66.20'
- 14 S18°43'00"W 73.62'
- 15 S34°29'00"W 223.60'
- 16 S46°10'00"W 148.34'
- 17 S26°05'00"W 148.34'
- 18 S20°08'00"W 139.30'
- 19 S37°05'00"W 198.13'
- 20 S46°18'00"W 199.97'

1" = 2000'  
scale ±

**NOTE:**

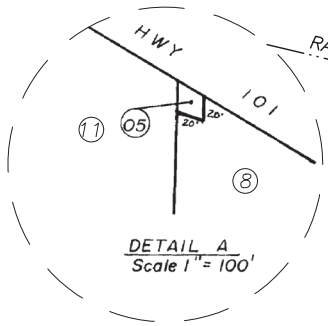
Sec. corners represents old assessor's arbitrary sec corners.

- 21 S18°55'30"W 292.68'
- 22 N89°34'19"W 574.79'
- 23 N03°17'52"E 82.77'
- 24 N48°24'52"W 675.22'
- 25 N03°17'52"E 30.00'
- 26 N86°42'08"W 250.00'
- 27 N03°17'52"E 252.86'
- 28 N73°21'38"W 287.75'
- 29 N34°19'33"W 249.83'
- 30 N77°15'09"W 431.90'
- 31 R=225.03' L=273.48'
- 32 S46°39'22"W 199.67'
- 33 N62°01'09"W 152.02'
- 34 R=250.04' L=233.41'
- 35 N62°01'09"W 152.02'

Assessor's Map Bk, 099-Pg, 05  
County of Santa Barbara, Calif.

APN 099-050-011

12/21 map correction



DETAIL A  
Scale 1" = 100'