

ATTACHMENT 5

**RESOLUTION OF THE BOARD OF SUPERVISORS
COUNTY OF SANTA BARBARA, STATE OF CALIFORNIA**

IN THE MATTER OF ADOPTING SPECIFIC) RESOLUTION NO. 15 - _____
AMENDMENTS TO THE LAND USE ELEMENT OF)
THE SANTA BARBARA COUNTY COMPREHENSIVE) Case No: 14GPA-00000-00019
PLAN BY THE ADOPTION OF THE EASTERN)
GOLETA VALLEY COMMUNITY PLAN.)

WITH REFERENCE TO THE FOLLOWING:

- A. On December 20, 1980, by Resolution No. 80-566, the Board of Supervisors adopted the Land Use Element of the Santa Barbara County Comprehensive Plan.
- B. On July 20, 1993, by Resolution No. 93-401, the Board of Supervisors adopted the Goleta Community Plan as an amendment to the Comprehensive Plan.
- C. The proposed amendments are consistent with the Santa Barbara County Comprehensive Plan including the Goleta Community Plan, and the requirements of California Planning, Zoning, and Development laws.
- D. In 2015, a Final Environmental Impact Report for the Eastern Goleta Valley Community Plan was prepared and presented to the County Planning Commission, subsequent to circulation of a Draft Environmental Impact Report to the appropriate agencies and public, and a public hearing was held to solicit public comments pursuant to the California Environmental Quality Act (CEQA).
- E. Citizens, California Native American Indian tribes, public agencies, public utility companies, and civic, education, and other community groups have been provided the opportunity for involvement in compliance with Government Code Section 65351.
- F. The County contacted and offered to conduct consultations with California Native American tribes in compliance with Government Code Sections 65352.3 and 65352.4.
- G. The County Planning Commission held duly noticed public hearings, as required by Government Code Section 65353, on the proposed amendments, at which hearings the amendments were explained and comments invited from the persons in attendance.
- H. The Planning Commission, after holding duly noticed public hearings on the above described amendments to the Comprehensive Plan, endorses and transmits to the Board of Supervisors said recommended amendments by resolution pursuant to Government Code Section 65354.
- I. The Board received and considered the Planning Commission's recommended actions and held a duly noticed public hearing, as required by Government Code Section 65353, on the proposed amendments at which hearing the amendments were explained and comments invited from the persons in attendance.

NOW, THEREFORE, IT IS HEREBY RESOLVED as follows:

1. The above recitations are true and correct.
2. The Board of Supervisors now finds, consistent with its authority in Government Code Section 65358, that it is in the public interest to provide orderly development of the County and important to the preservation of the health, safety, and general welfare of the residents of the County to:
 - a. Adopt the Eastern Goleta Valley Community Plan as an amendment to the Land Use Element of the Comprehensive Plan (Exhibit 1).
 - b. Amend “Section V, Area/Community Goals” of the Land Use Element of the County Comprehensive Plan as follows (underline = new text; ~~strikethrough~~ = deleted text):

GOLETA

In 1993, the County adopted a community plan for the Goleta Community Plan area (see the ~~“Goleta Community Plan Area Land Use Map” for the Planning Area boundaries~~), titled the Goleta Community Plan. The eastern portion of the Goleta Community Plan area underwent many changes in subsequent years, such as the incorporation of the City of Goleta in 2002 which removed 5,100 acres of the Plan area from county jurisdiction. These changes prompted the County to prepare and adopt a separate updated community plan solely for the eastern portion of the Goleta Community Plan area in 2015, titled the Eastern Goleta Valley Community Plan. This action divided the Goleta Community Plan area into two plan areas: the western area and the eastern area. The western area continues to be referred to as the Goleta Community Plan area. The eastern area is known as the Eastern Goleta Valley Community Plan area. The Goleta Community Plan remains unchanged and in effect for the western area (Goleta Community Plan area). The eastern area (Eastern Goleta Valley Community Plan area) is now subject to the goals, objectives, policies, and actions contained in the Eastern Goleta Valley Community Plan (see “Eastern Goleta Valley” below for addition information).

~~This Plan~~ The Goleta Community Plan describes the community and the relevant issues it faces, including land use, agriculture, recreation, coastal access, circulation, habitats, public services, and visual resources (see the ~~“Goleta Community Plan Land Use Designations South” and “Goleta Community Plan Land Use Designations North” maps for the Plan area boundaries~~). The Goleta Community Plan establishes land use designations and zone districts and includes development standards to guide future development. In addition, the Goleta Community Plan contains a number of policies as well as actions which implement the goals and objectives of the Plan.

In addition to the applicable Comprehensive Plan polices, the goals, objectives, polices and actions of the Goleta Community Plan also apply. Where there are other goals, objectives, policies, and actions in the Comprehensive Plan which address the

same issues as the Goleta Community Plan, those of the Goleta Community Plan shall be applied.

See the “Community Plans” section of this Element for the complete Goleta Community Plan.⁵⁵

EASTERN GOLETA VALLEY

In 2015, the County adopted the Eastern Goleta Valley Community Plan (see the “Eastern Goleta Valley Community Plan Land Use Designations” map for the Plan area boundaries). The Eastern Goleta Valley Community Plan area was originally part of the Goleta Community Plan area and subject to the Goleta Community Plan (see “Goleta” above for additional background information).

The Eastern Goleta Valley Community Plan updates the Comprehensive Plan and provides policy direction for issues and development trends specific to the Plan area. This update was necessary to manage current conditions, facilitate proper planning, and accurately reflect prevailing vision and objectives of the area residents. The Eastern Goleta Valley Community Plan provides the general public, land owners, and decision makers with a framework for planning future development in the region. It establishes land use designations and zone districts and includes goals, policies, development standards, and actions to guide future development.

Existing Comprehensive Plan policies apply to the Eastern Goleta Valley Community Plan area in addition to those specific policies and actions identified in the Eastern Goleta Valley Community Plan.

See the “Community Plans” section of this Element for the complete Eastern Goleta Valley Community Plan.

- c. Amend the maps of the Land Use Element of the County Comprehensive Plan as follows:
 1. Adopt the map titled “Eastern Goleta Valley Community Plan Land Use Designations” (Exhibit 2), which depicts the land use designations within the Eastern Goleta Valley Community Plan area;
 2. Adopt the map titled “Eastern Goleta Valley Community Plan Land Use Overlay” (Exhibit 3), which depicts airport, flood, and other land use overlay designations within the Eastern Goleta Valley Community Plan area;
 3. Adopt the map titled “Eastern Goleta Valley Community Plan Environmentally Sensitive Habitat and Riparian Corridor Land Use and Zoning Overlays” (Exhibit 4), which depicts environmentally sensitive habitat and riparian corridors within the Eastern Goleta Valley Community Plan area;

4. Amend the existing map titled “Goleta Community Plan Land Use Designations South” by removing Land Use Designations within the boundaries of the Eastern Goleta Valley Community Plan area as shown in Exhibit 2 (“Eastern Goleta Valley Community Plan Land Use Designations”);
5. Amend the existing map titled “Goleta Community Plan Land Use Designations North” by removing Land Use Designations within the boundaries of the Eastern Goleta Valley Community Plan area as shown in Exhibit 2 (“Eastern Goleta Valley Community Plan Land Use Designations”);
6. Amend the existing map titled “Goleta Community Plan Land Use Overlay” by removing Land Use Overlay Designations within the boundaries of the Eastern Goleta Valley Community Plan area as shown in Exhibit 2 (“Eastern Goleta Valley Community Plan Land Use Designations”);
7. Amend the existing map titled “Goleta Community Plan Environmentally Sensitive Habitat and Riparian Corridor Land Use and Zoning Overlays South” by removing ESH/RC Overlay Designations within the boundaries of the Eastern Goleta Valley Community Plan area as shown in Exhibit 2 (“Eastern Goleta Valley Community Plan Land Use Designations”);
8. Amend the existing map titled “Goleta Community Plan Environmentally Sensitive Habitat and Riparian Corridor Land Use and Zoning Overlays North” by removing ESH/RC Overlay Designations within the boundaries of the Eastern Goleta Valley Community Plan area as shown in Exhibit 2 (“Eastern Goleta Valley Community Plan Land Use Designations”);
9. Amend the existing map titled “Santa Barbara County Comprehensive Plan Land Use Element Santa Barbara Area (COMP-3)” by removing Land Use Designations within the boundaries of the Eastern Goleta Valley Community Plan area as shown in Exhibit 2 (“Eastern Goleta Valley Community Plan Land Use Designations”);
10. Amend the existing map titled “South Coast Rural Region Land Use Designations” to include Land Use Designations as depicted in the Rural Area on the proposed map titled “Eastern Goleta Valley Community Plan Land Use Designations” (Exhibit 2); and
11. Amend the existing map titled “Santa Barbara County Parks, Recreation and Trails (PRT-3)” by incorporating existing and proposed parks, recreation facilities, and trails within the Eastern Goleta Valley Community Plan area as shown in Figure 16, “Proposed Parks, Recreation & Trails,” of the Eastern Goleta Valley Community Plan (Exhibit 1).

3. In compliance with the provisions of Government Code Section 65356, the above described changes are hereby adopted as amendments to the Land Use Element of the County Comprehensive Plan.
4. Pursuant to provisions of Government Code Section 65357, the Clerk of the Board is hereby described to make the documents amending the Santa Barbara County Comprehensive Plan, including the diagrams and text, available to the public for inspection.
5. The Chair and the Clerk of this Board are hereby authorized and directed to sign and certify all maps, documents, and other materials in accordance with this Resolution to reflect the above described action by the Board.
6. Pursuant to the provisions of Government Code Section 65357 the Clerk of the Board is hereby authorized and directed to send endorsed copies of said maps to the planning agency of each city within this County.

PASSED, APPROVED AND ADOPTED by the Board of Supervisors of the County of Santa Barbara, State of California, this _____ day of _____, 2015, by the following vote:

AYES:

NOES:

ABSTAIN:

ABSENT:

JANET WOLF, CHAIR
BOARD OF SUPERVISORS
COUNTY OF SANTA BARBARA

ATTEST:

MONA MIYASATO, COUNTY EXECUTIVE OFFICER
CLERK OF THE BOARD

By _____
Deputy Clerk

APPROVED AS TO FORM:

MICHAEL C. GHIZZONI
COUNTY COUNSEL

By _____
Deputy County Counsel

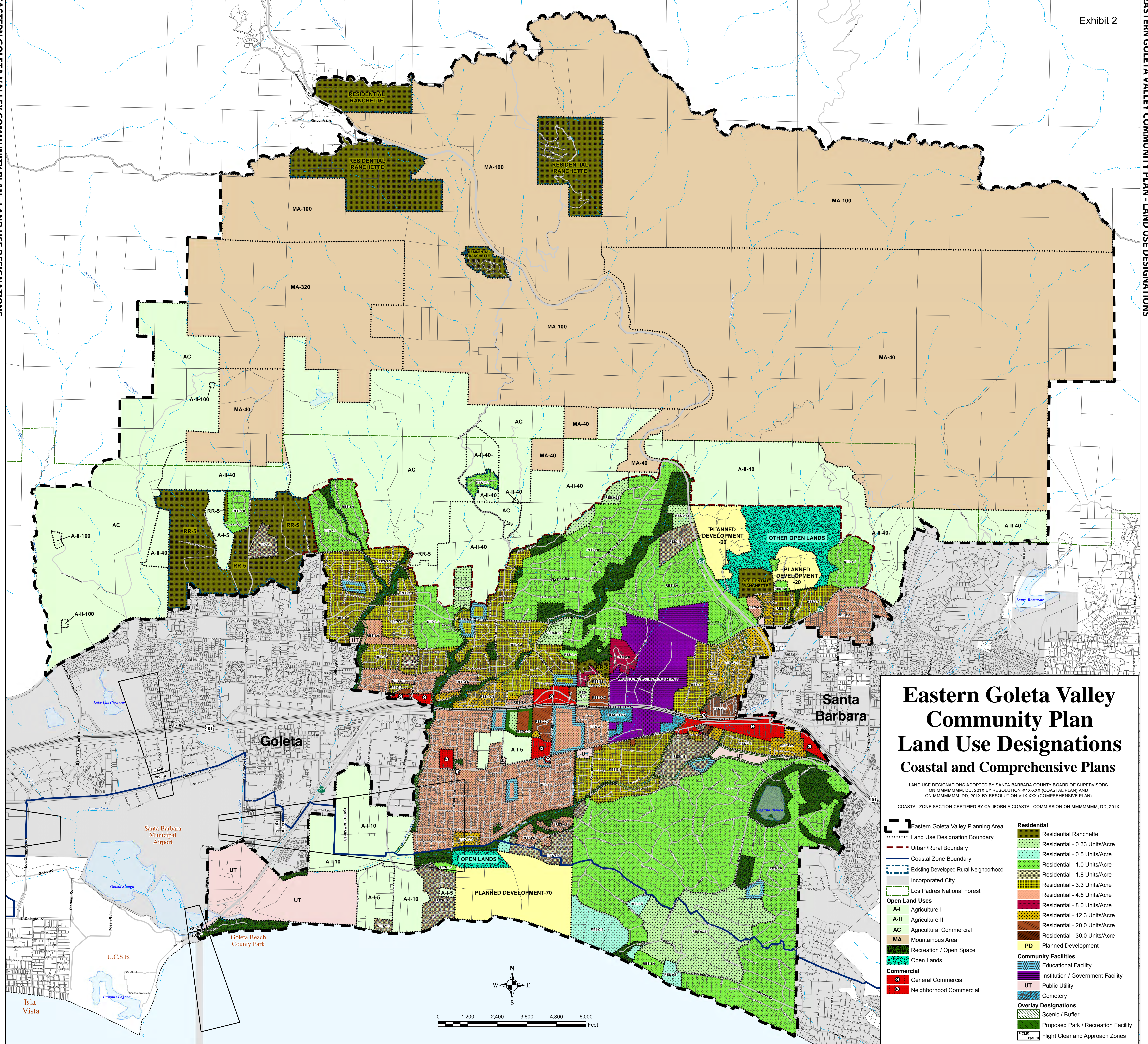
EXHIBITS:

- Exhibit 1: Eastern Goleta Valley Community Plan
- Exhibit 2: Eastern Goleta Valley Community Plan Land Use Designations
- Exhibit 3: Eastern Goleta Valley Community Plan Land Use Overlay
- Exhibit 4: Eastern Goleta Valley Community Plan Environmentally Sensitive Habitat and Riparian Corridor Land Use and Zoning Overlays

EXHIBIT 1

EASTERN GOLETA VALLEY COMMUNITY PLAN

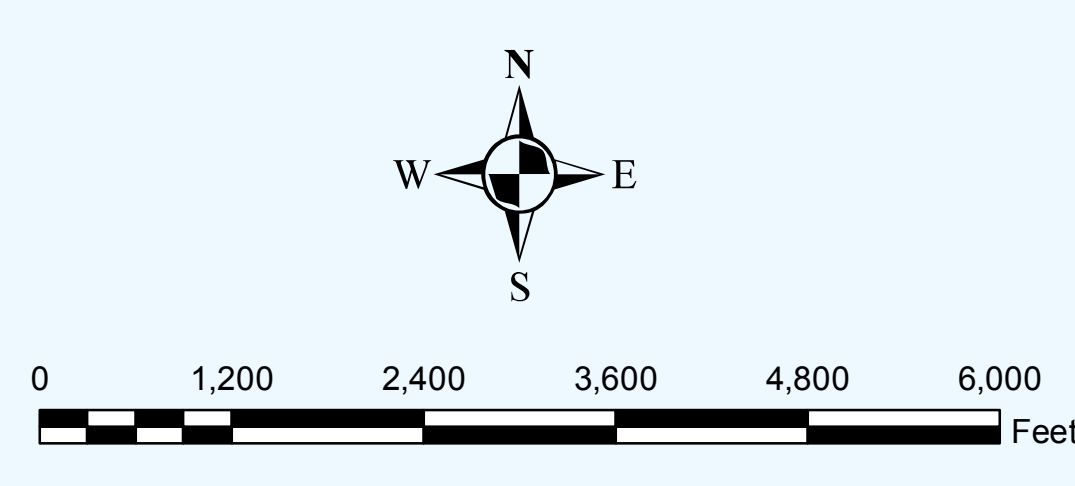
Available online at <http://longrange.sbcountyplanning.org/planareas/goleta/gcp.php>

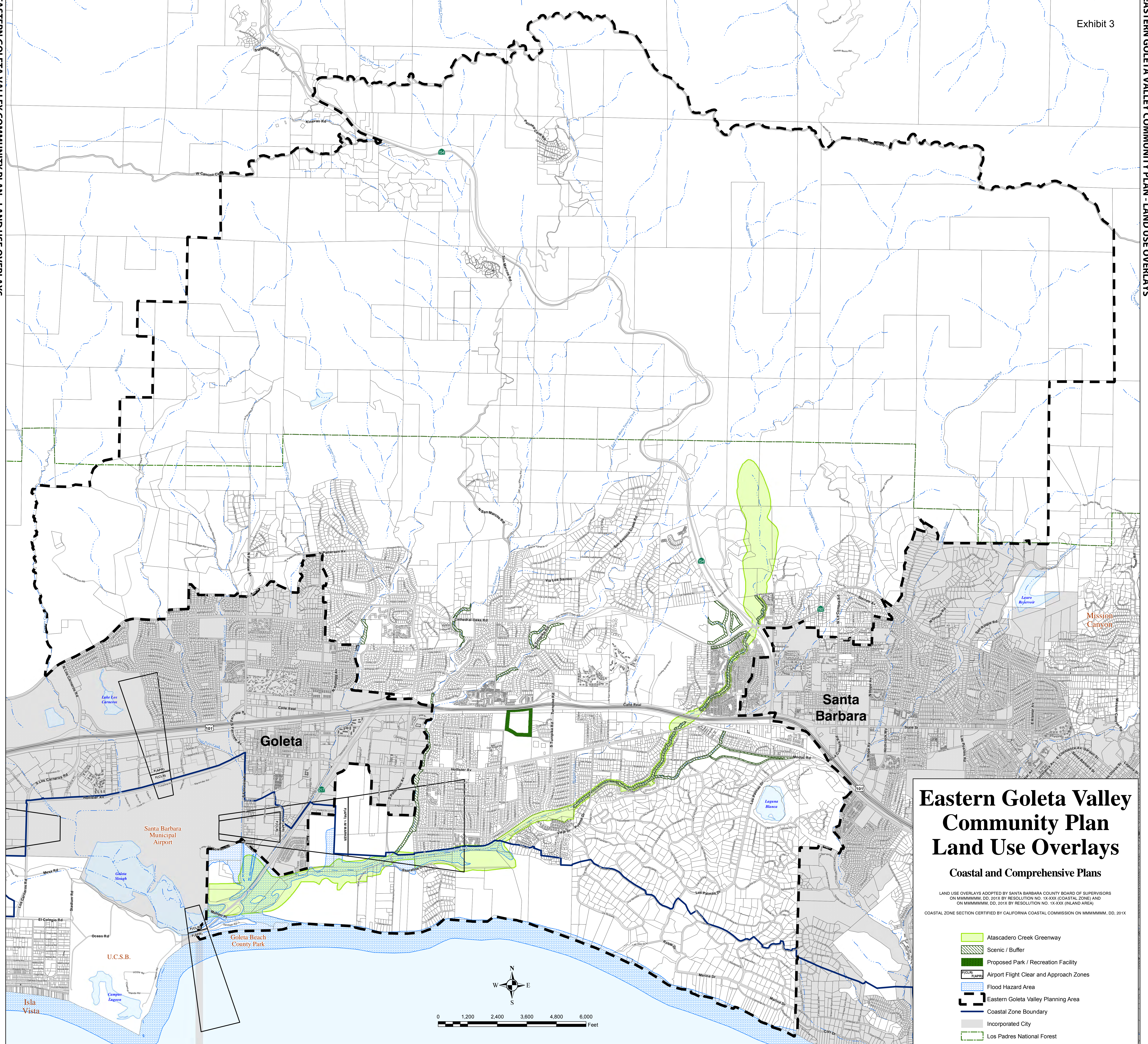


Eastern Goleta Valley Community Plan Land Use Designations Coastal and Comprehensive Plans

LAND USE DESIGNATIONS ADOPTED BY SANTA BARBARA COUNTY BOARD OF SUPERVISORS ON MMMMMM, DD, 201X BY RESOLUTION #1X-XXX (COASTAL PLAN) AND ON MMMMMM, DD, 201X BY RESOLUTION #1X-XXX (COMPREHENSIVE PLAN)
COASTAL ZONE SECTION CERTIFIED BY CALIFORNIA COASTAL COMMISSION ON MMMMMM, DD, 201X

	Eastern Goleta Valley Planning Area		Residential Ranchette
	Land Use Designation Boundary		Residential - 0.33 Units/Acre
	Urban/Rural Boundary		Residential - 0.5 Units/Acre
	Coastal Zone Boundary		Residential - 1.0 Units/Acre
	Existing Developed Rural Neighborhood		Residential - 1.8 Units/Acre
	Incorporated City		Residential - 3.3 Units/Acre
	Los Padres National Forest		Residential - 4.6 Units/Acre
	Open Land Uses		Residential - 8.0 Units/Acre
	A-I Agriculture I		Residential - 12.3 Units/Acre
	A-II Agriculture II		Residential - 20.0 Units/Acre
	AC Agricultural Commercial		Residential - 30.0 Units/Acre
	MA Mountainous Area		PD Planned Development
	Recreation / Open Space		
	Open Lands		
	Commercial		
	General Commercial		
	Neighborhood Commercial		
	Community Facilities		
	Educational Facility		
	Institution / Government Facility		
	UT Public Utility		
	Cemetery		
	Overlay Designations		
	Scenic / Buffer		
	Proposed Park / Recreation Facility		
	Flight Clear and Approach Zones		





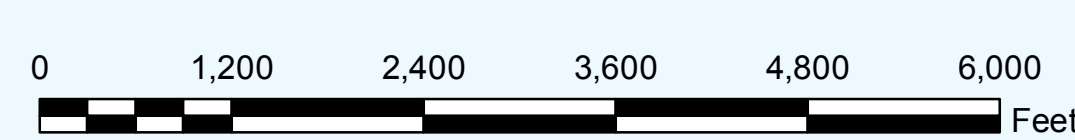
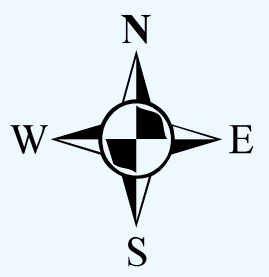
Eastern Goleta Valley Community Plan Land Use Overlays

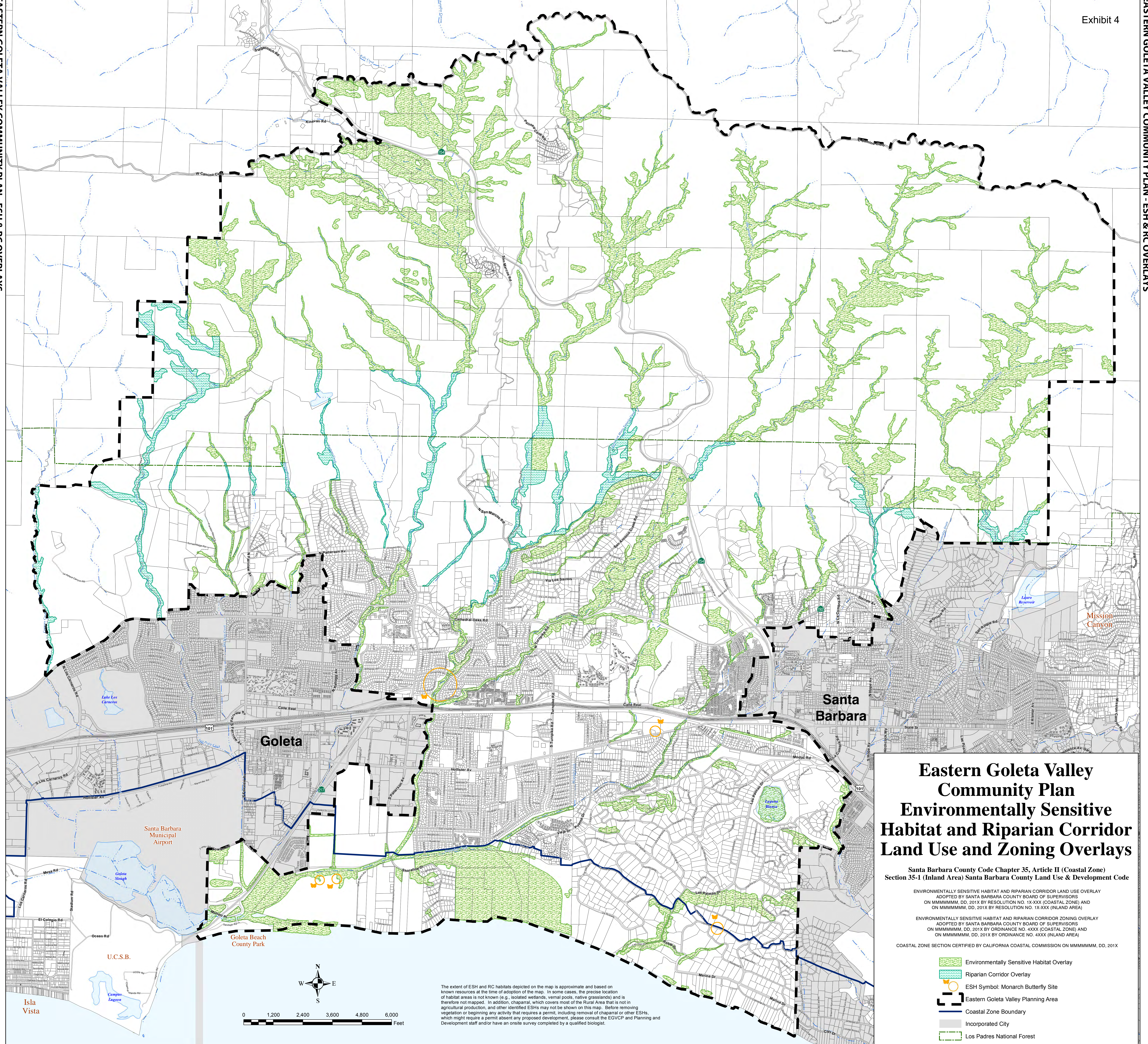
Coastal and Comprehensive Plans

LAND USE OVERLAYS ADOPTED BY SANTA BARBARA COUNTY BOARD OF SUPERVISORS
ON MMMMMM, DD, 201X BY RESOLUTION NO. 1X-XXX (COASTAL ZONE) AND
ON MMMMMM, DD, 201X BY RESOLUTION NO. 1X-XXX (INLAND AREA)

COASTAL ZONE SECTION CERTIFIED BY CALIFORNIA COASTAL COMMISSION ON MMMMMM, DD, 201X

- Atascadero Creek Greenway
- Scenic / Buffer
- Proposed Park / Recreation Facility
- Airport Flight Clear and Approach Zones
- Flood Hazard Area
- Eastern Goleta Valley Planning Area
- Coastal Zone Boundary
- Incorporated City
- Los Padres National Forest





Eastern Goleta Valley Community Plan Environmentally Sensitive Habitat and Riparian Corridor Land Use and Zoning Overlays

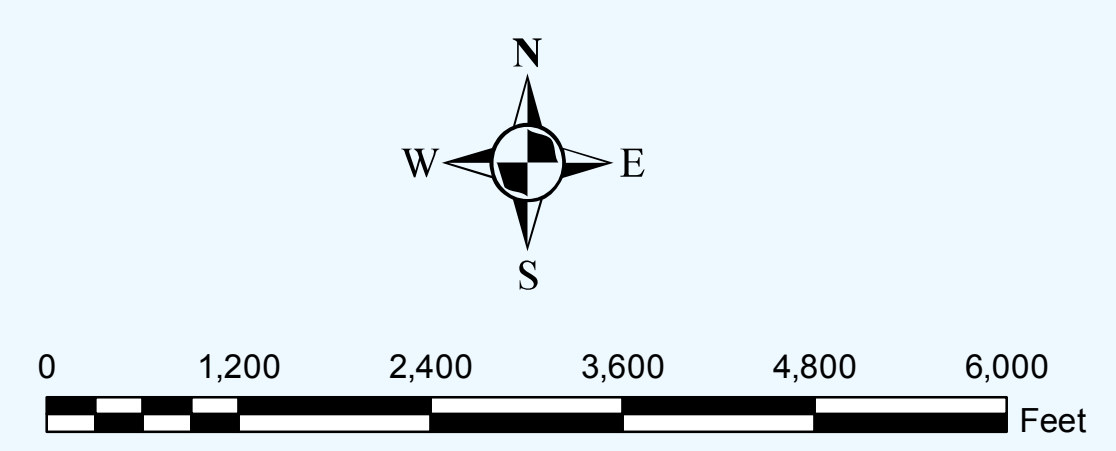
Santa Barbara County Code Chapter 35, Article II (Coastal Zone)
Section 35-1 (Inland Area) Santa Barbara County Land Use & Development Code

ENVIRONMENTALLY SENSITIVE HABITAT AND RIPARIAN CORRIDOR LAND USE OVERLAY
ADOPTED BY SANTA BARBARA COUNTY BOARD OF SUPERVISORS
ON MMMMMM, DD, 201X BY RESOLUTION NO. 1X-XXX (COASTAL ZONE) AND
ON MMMMMM, DD, 201X BY RESOLUTION NO. 1X-XXX (INLAND AREA)

ENVIRONMENTALLY SENSITIVE HABITAT AND RIPARIAN CORRIDOR ZONING OVERLAY
ADOPTED BY SANTA BARBARA COUNTY BOARD OF SUPERVISORS
ON MMMMMM, DD, 201X BY ORDINANCE NO. 4XXX (COASTAL ZONE) AND
ON MMMMMM, DD, 201X BY ORDINANCE NO. 4XXX (INLAND AREA)

COASTAL ZONE SECTION CERTIFIED BY CALIFORNIA COASTAL COMMISSION ON MMMMMM, DD, 201X

- Environmentally Sensitive Habitat Overlay
- Riparian Corridor Overlay
- ESH Symbol: Monarch Butterfly Site
- Eastern Goleta Valley Planning Area
- Coastal Zone Boundary
- Incorporated City
- Los Padres National Forest



The extent of ESH and RC habitats depicted on the map is approximate and based on known resources at the time of adoption of the map. In some cases, the precise location of habitat areas is not known (e.g., isolated wetlands, vernal pools, native grasslands) and is therefore not mapped. In addition, chaparral, which covers most of the Rural Area that is not in agricultural production, and other identified ESHs may not be shown on this map. Before removing vegetation or beginning any activity that requires a permit, including removal of chaparral or other ESHs, which might require a permit absent any proposed development, please consult the EGVCP and Planning and Development staff and/or have an onsite survey completed by a qualified biologist.

Isla Vista

U.C.S.B.

Santa Barbara Municipal Airport

Goleta

Santa Barbara

Mission Canyon

Goleta Beach County Park

Goleta Slough

Campus Lagoon