

COUNTY OF SANTA BARBARA  
GENERAL SERVICES

# County of Santa Barbara Fleet

## Electric Vehicle Charging Rate Structure and Parking Fee Resolution

July 14, 2020



GENERAL SERVICES

# Previous Board Direction

---



- March 2019 – Board directs purchase of all new non-public safety sedans in the light duty fleet be electric vehicles
- February 2020 - Approved the contract with PowerFlex Systems, to supply the County with electric vehicle chargers
- Today – Approved the contract with PowerFlex Systems for the installation of those chargers

# Fee Resolution

---



GENERAL SERVICES

- Approval of a Fee Resolution
- Establish electric vehicle charging and parking rates and fees
- Install public use EV charging equipment at various County locations

# Background

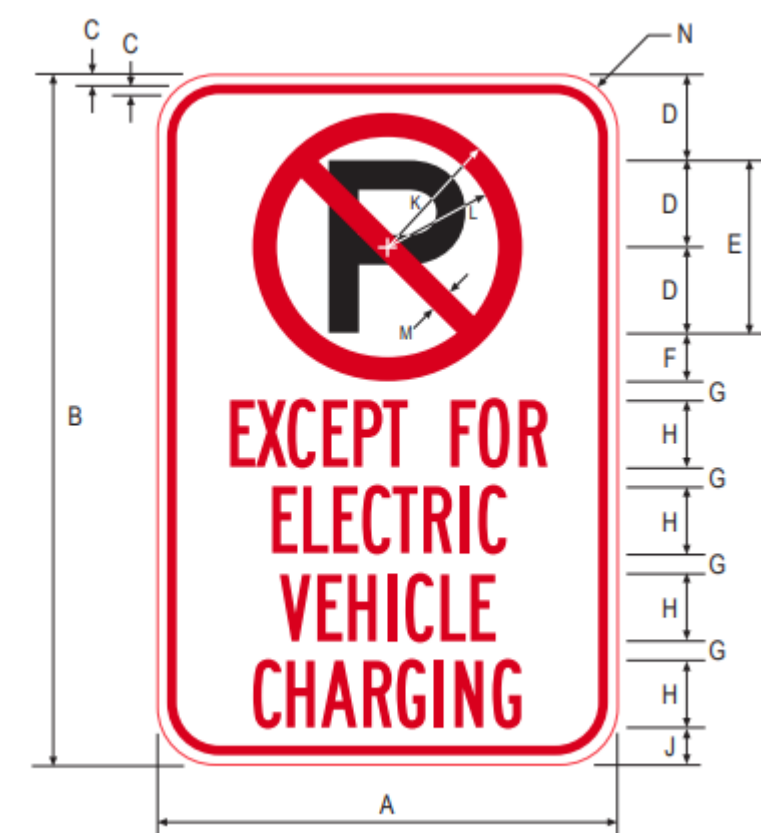
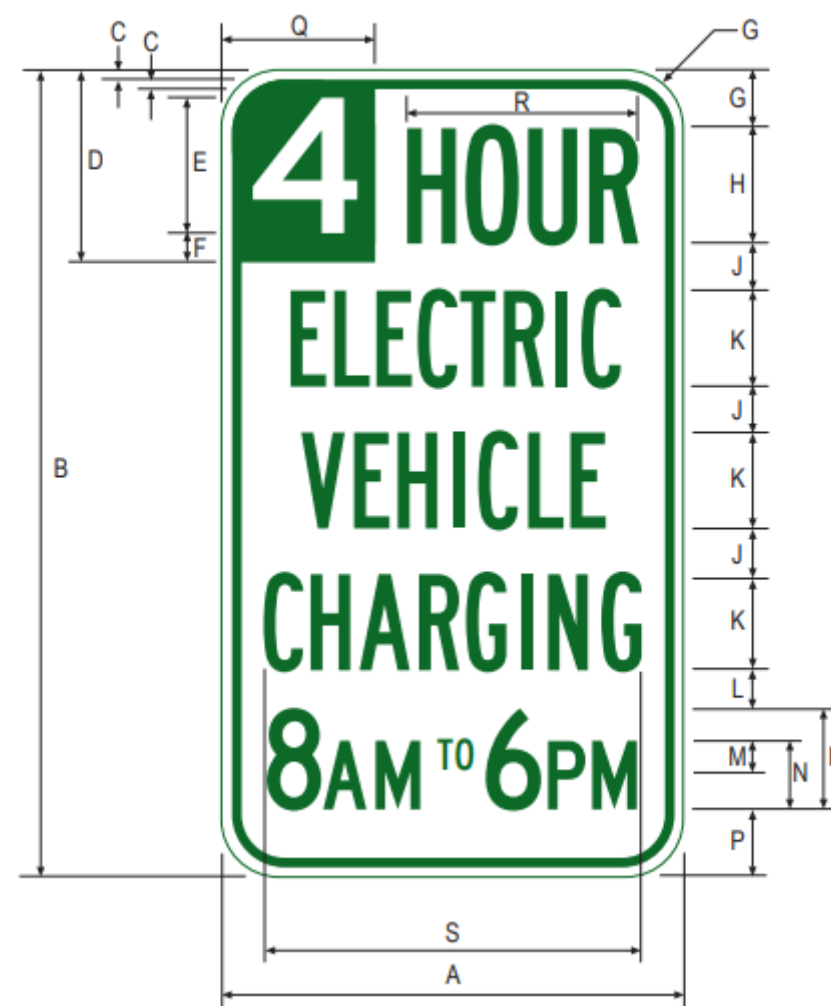
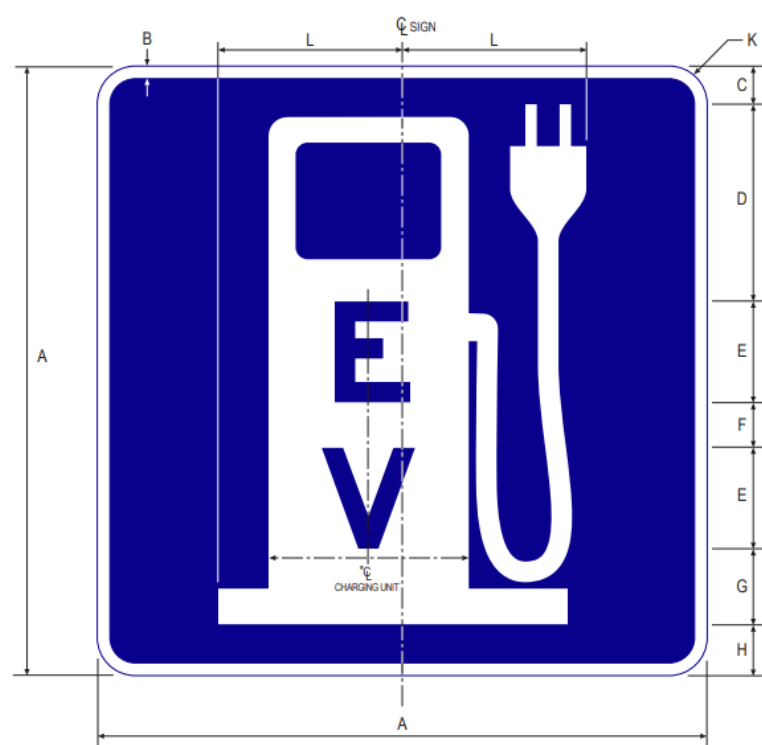
---



- EV charging equipment will be installed this fall. Four locations on County property.
  - Downtown Admin Lot
  - Two locations on Calle Real Campus
    - Public Health and Social Services Buildings
  - Lompoc Social Services Building
  
- Fee is for stations that will be available to both the public, and County employees' personal vehicles (10 to as many as 30 chargers)
  - County wishes to recover electricity costs used to charge non-County (public) vehicles.

# Background

- In addition, to ensure maximum and efficient use of the public stations, a parking fee will be charged for vehicles that remain in the EV charging space beyond four hours.
- Encourage users whose vehicles are fully charged to vacate the space so others may utilize the charging equipment.
- All chargers will be properly signed with standard EV signage



# Fees and Rates



Location	Avg Daily Electricity Cost per kWh Used for the Time Connected	Parking Cost per <u>Minute</u> - For Time Over 4 hours in the Space	Parking Cost per <u>Hour</u> - For Time Over 4 hours in the Space
Downtown Admin Parking Lot	\$0.15	\$0.08	\$4.80
Calle Real Parking Lots	\$0.14	\$0.08	\$4.80
Lompoc Campus	\$0.20	\$0.08	\$4.80
Betteravia Campus	\$0.22	\$0.08	\$4.80

- Average cost of electricity per kWh, that the County pays to PG&E and SCE on our utility bills
- No parking fee for the first four hours

# Fees and Rates

---



- Parking fee will be assessed on a per minute basis for any time over four hours in the charging space between the daytime hours of 7:00am to 9:00pm.
- No parking fee will be charged:
  - For the first four hours in the space
  - At night from 9:01pm to 6:59am to allow overnight charging for local residents without access to charging.
- Four hours is the charging standard for Level 2 charging in California and many EV drivers expect that.
- Most EVs can receive a full charge within four hours with a Level 2 charger.

# Cost Recovery and Potential Revenue



	<b>Annual per Charger</b>	<b>Annual for 16 EV Chargers</b>
Potential Parking Fee Revenue <sup>1</sup>	\$ 840	\$ 13,440
Electric Cost Recovery <sup>2</sup>	\$ 3,016	\$ 48,250

1. Assumes an average of 30 minutes of parking fee time per day per charging spot (parking time begins at 4 hours and one minute).
2. Assumes 7.5 hours of charging time per day per charger



# Charging Rate Structure Comparisons



Jurisdiction	Charging Structure
City of Santa Barbara	First 75 mins free, then \$1.50 per hour \$0.25 per kWh
County of San Mateo	\$1.50 per hour for 0 – 4 hours for charging \$7.50 per hour for greater than 4 hours for charging
City of Del Mar	\$0.35/kWh for the public for the first three hours, escalating to \$0.70/kWh after three hours
Humboldt County	\$0.50 session fee and a \$0.25 per kWh fee. additional \$1/hr charge beginning after 2 hours
County of Santa Clara	Free charging but a 4 hour parking limit
City of Menlo Park	\$1 access fee, \$0.23 per kWh, \$5 per hour after three hours
City of Ventura	Flat \$1.00 per hour
County of Ventura	\$0.26 per kWh
Cal Poly	\$0.11 per kWh and \$6 per hour over four hours
UCSB	\$0.20 per kWh plus parking permit fee
City of SLO	\$1.50/hour for the first four hours, then \$4.00 per hour thereafter.

# Fee Collection Method

---



- Fees will be collected using software built into the PowerFlex charging stations
- EV driver downloads the PowerFlex app from the Apple App Store or Google Play Store and installs it on their smartphone.
- Once they log into the app, they can connect their car to the charger and scan the QR code on the charger to begin charging.
- Each quarter, PowerFlex will submit payments to the County that are collected from end users
- Remittance will include the base energy costs plus fees collected for parking over the four hour period.
- County owned vehicles will not be required to use the app and will not pay this fee.

# Recommendation

---



- Adopt a Resolution establishing electric vehicle (EV) charging and parking rates and fees relating to public use of EV charging equipment in the Calle Real Campus, Downtown Administrative Building, Lompoc campus, and Betteravia Campus parking lots



# Locations

## Admin Parking Lot – Santa Barbara

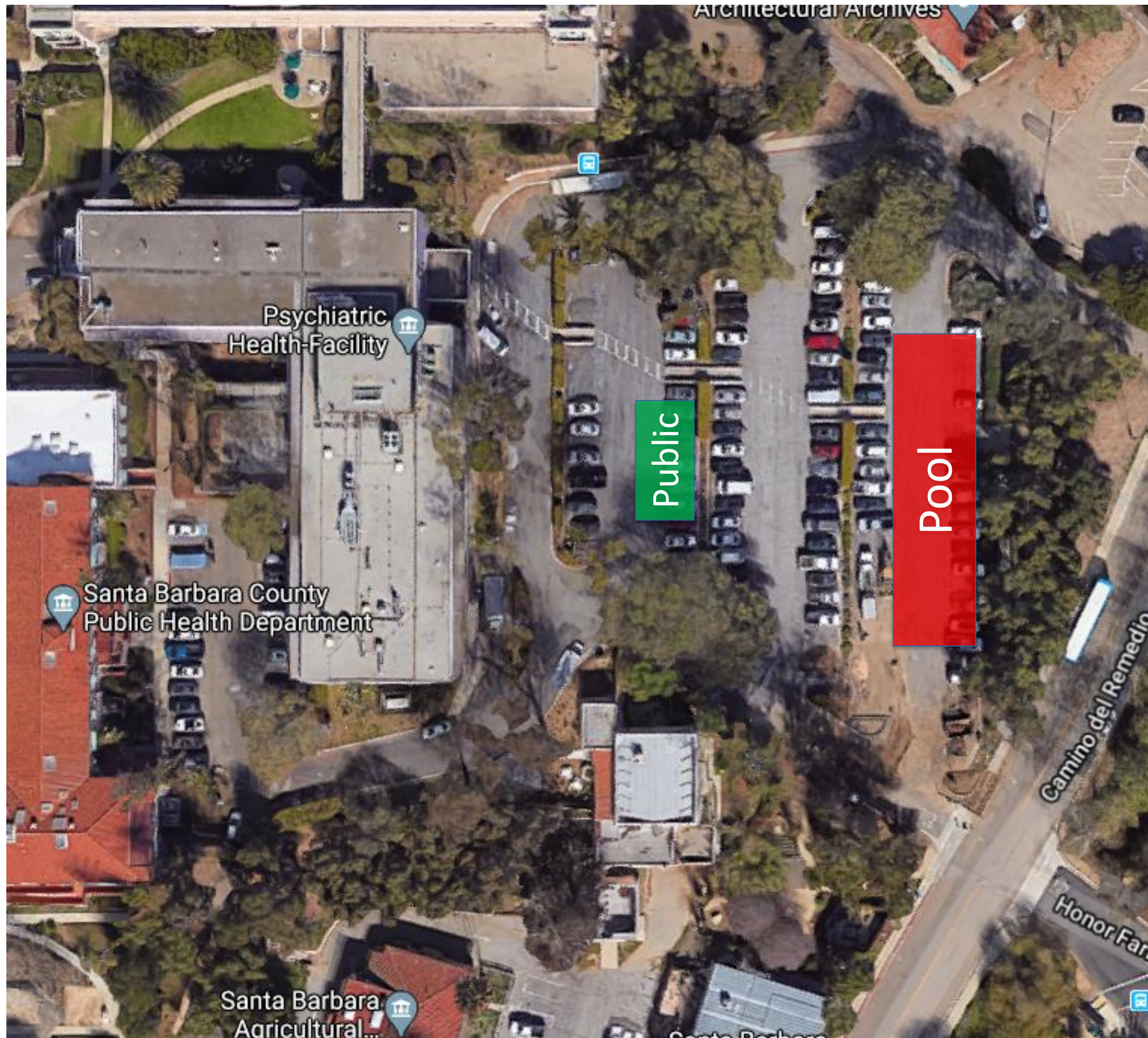


# Locations



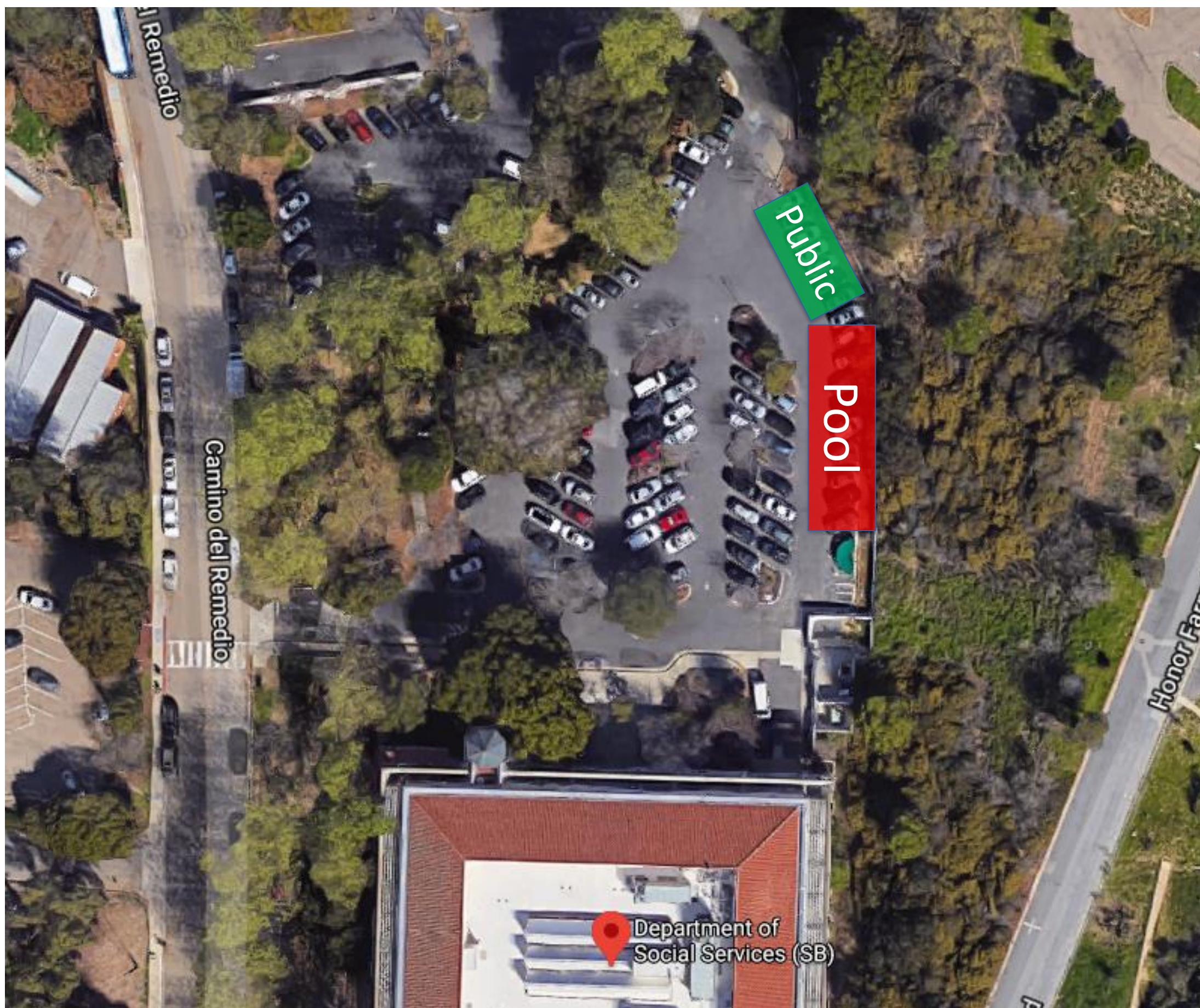
GENERAL SERVICES

## Calle Real – Public Health



# Locations

## Calle Real – Social Services



# Locations

---

## Lompoc – Social Services

