
Community Facilities Districts Annual Tax Levy for Orcutt and Providence Landing

August 2, 2011

County of Santa Barbara

Board of Supervisors

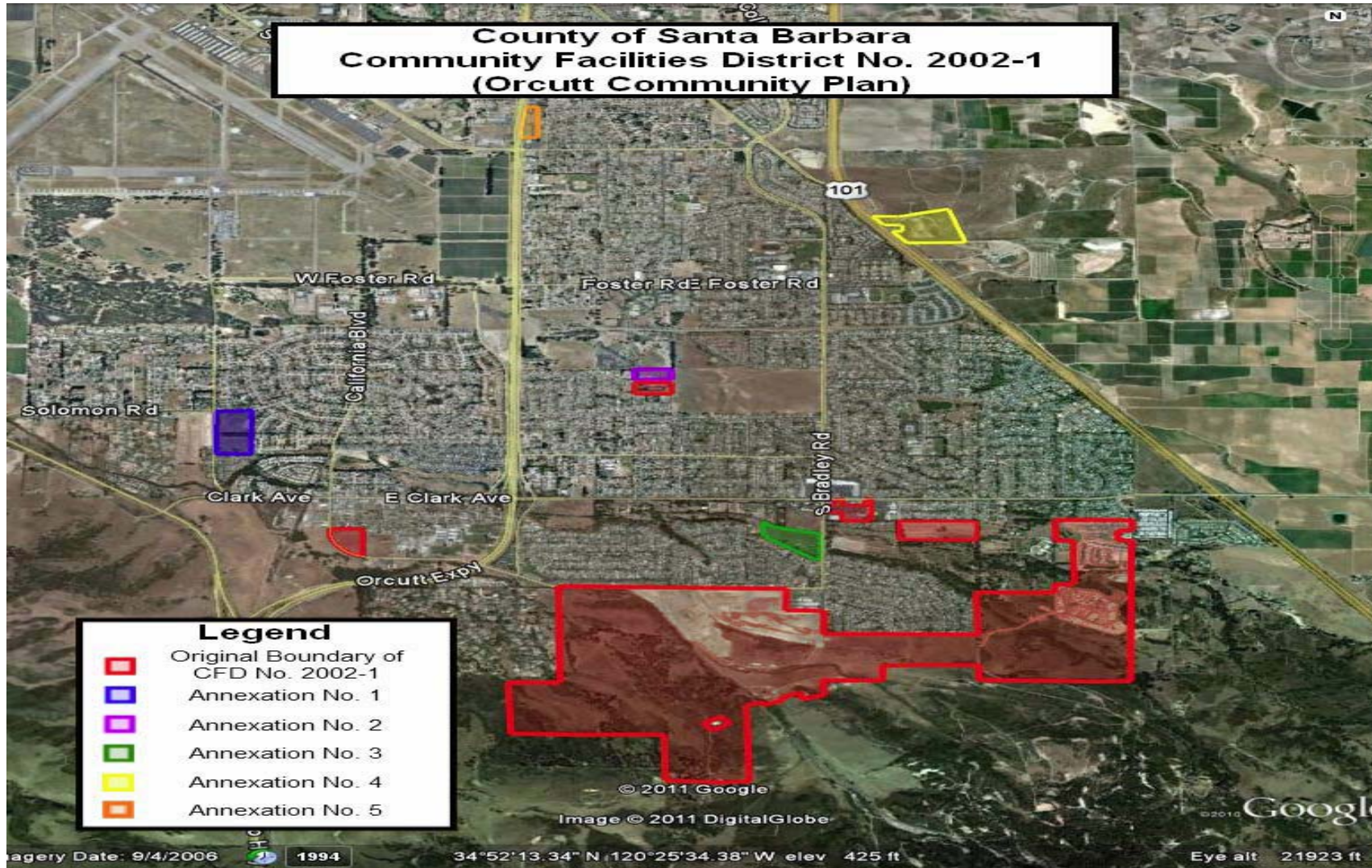
CFD Overview

- Community Facilities District provides an alternative method of financing certain public capital facilities and services, especially in developing areas and areas undergoing rehabilitation.
 - Particularly suited for phased development.
 - Financing is through an annual special tax
 - County has two community facilities districts:
 - Orcutt
 - Providence Landing
-

OCFD Overview

- Created on October 8, 2002 by Board of Supervisors
 - Purpose to offset operational and maintenance costs associated with buildout of Orcutt
 - Finances the services of:
 - Fire
 - Police/Sheriff
 - Parks/Open Space/Parkway Maintenance
 - Flood and Storm Protection Services (i.e. regional basins)
-

O CFD Boundary



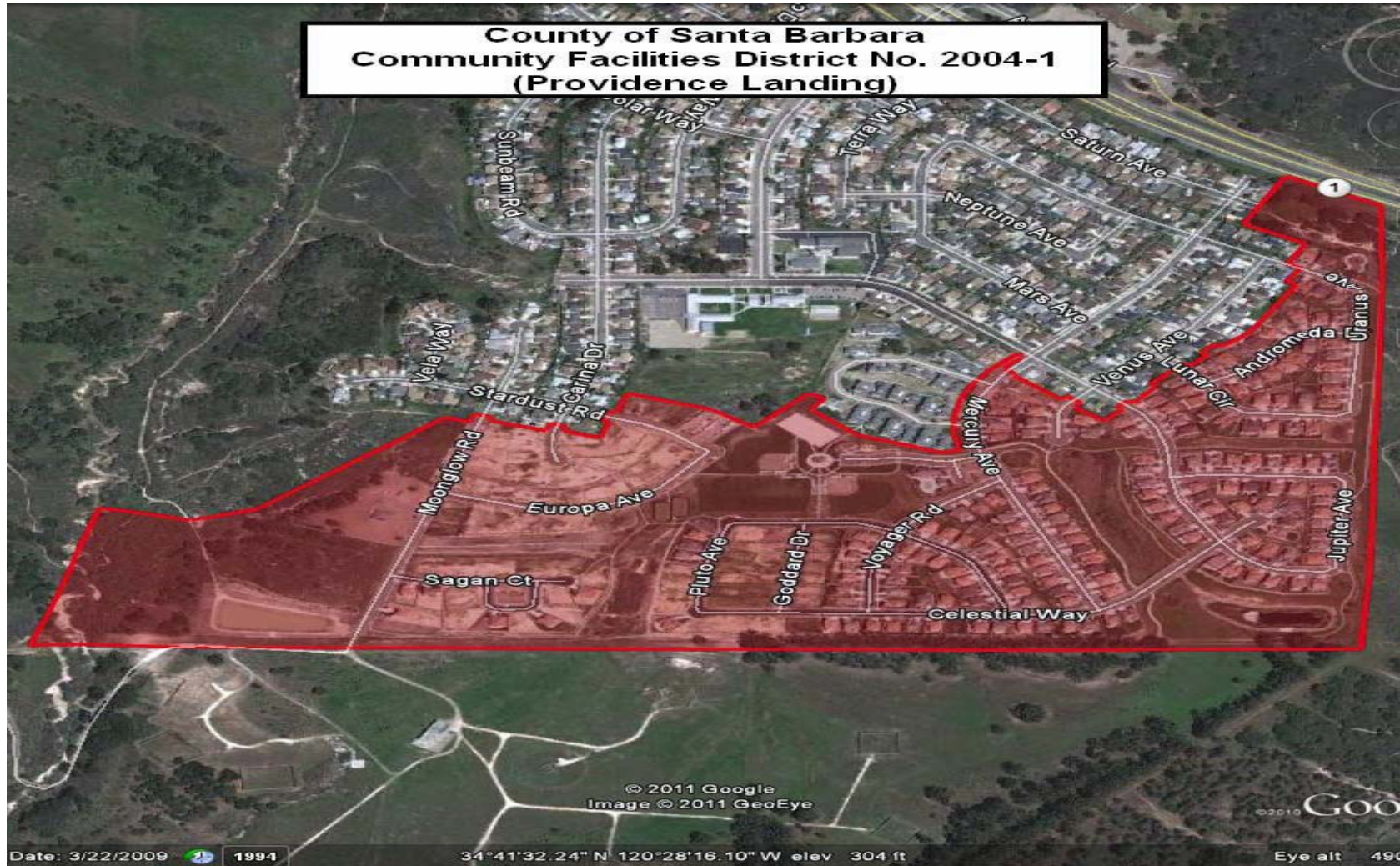
OCFD Tax Rate: Fiscal Year 2011-12

- 259 parcels taxed to generate \$212,889.66
 - Single-family unit: \$569.00
 - Multi-Family Property: \$386.92
 - Commercial property:
 - \$0.39262 per square foot for retail
 - \$0.55194 per square foot for non-retail
-

PLCFD Overview

- Created on January 11, 2005 by Board of Supervisors
 - Finances the cost of maintaining a community park
 - Providence Landing Park formally conveyed to the County on August 25th, 2009
 - County Parks contracted with Providence Landing Home Owner Association for operations and maintenance of park in December 2009
-

PLCFD Boundary



Providence Landing Park



PLCFD Tax Rate: Fiscal Year 2011-12

- 191 parcels taxed to generate \$133,728
 - \$672 per parcel
-

Recommended Actions

- Board adopt recommendations A-E of staff report including adopting resolutions to levy taxes within the Orcutt Community Facilities District (CFD No. 2002-1) and Providence Landing Community Facilities District (CFD No. 2004-1)
-