

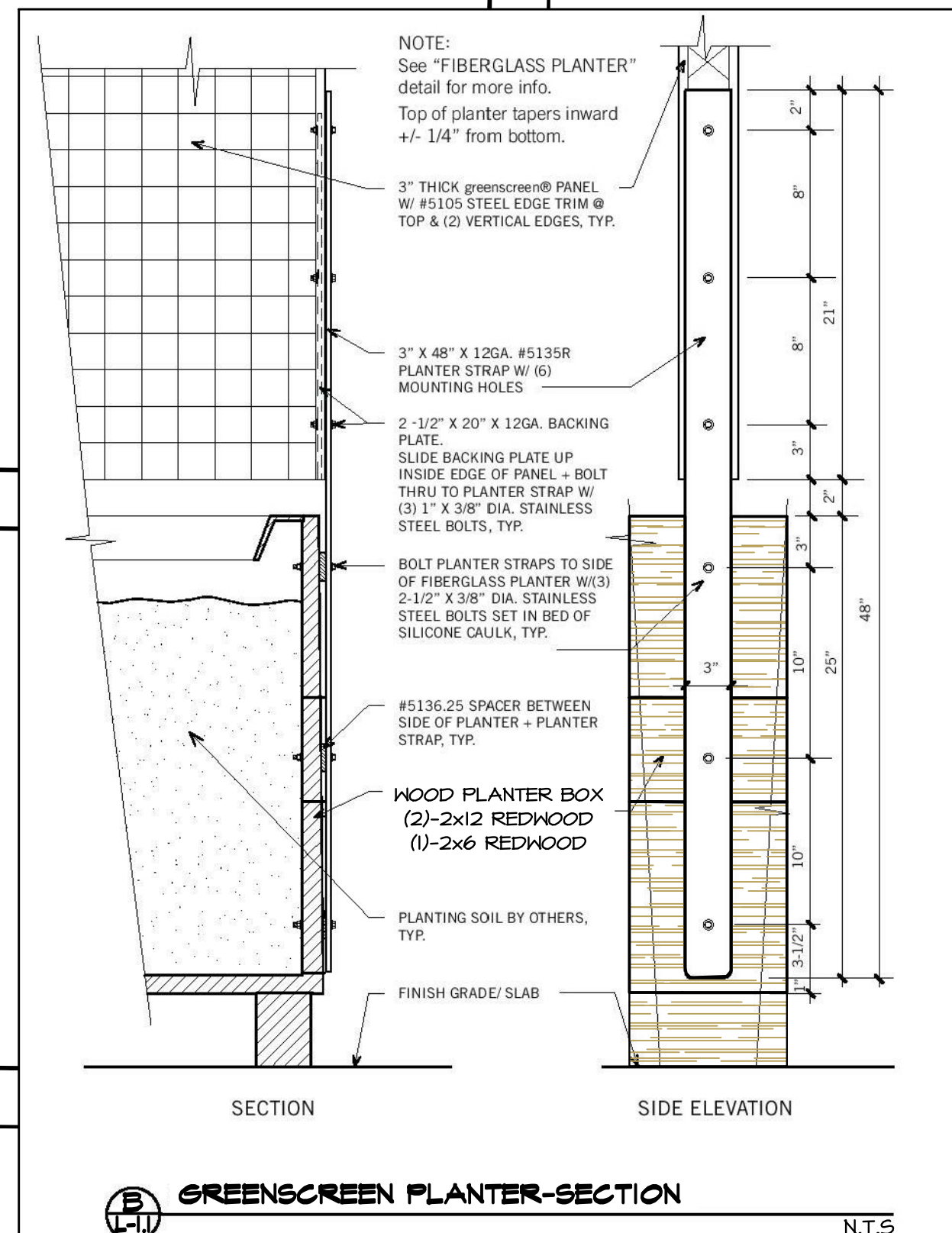
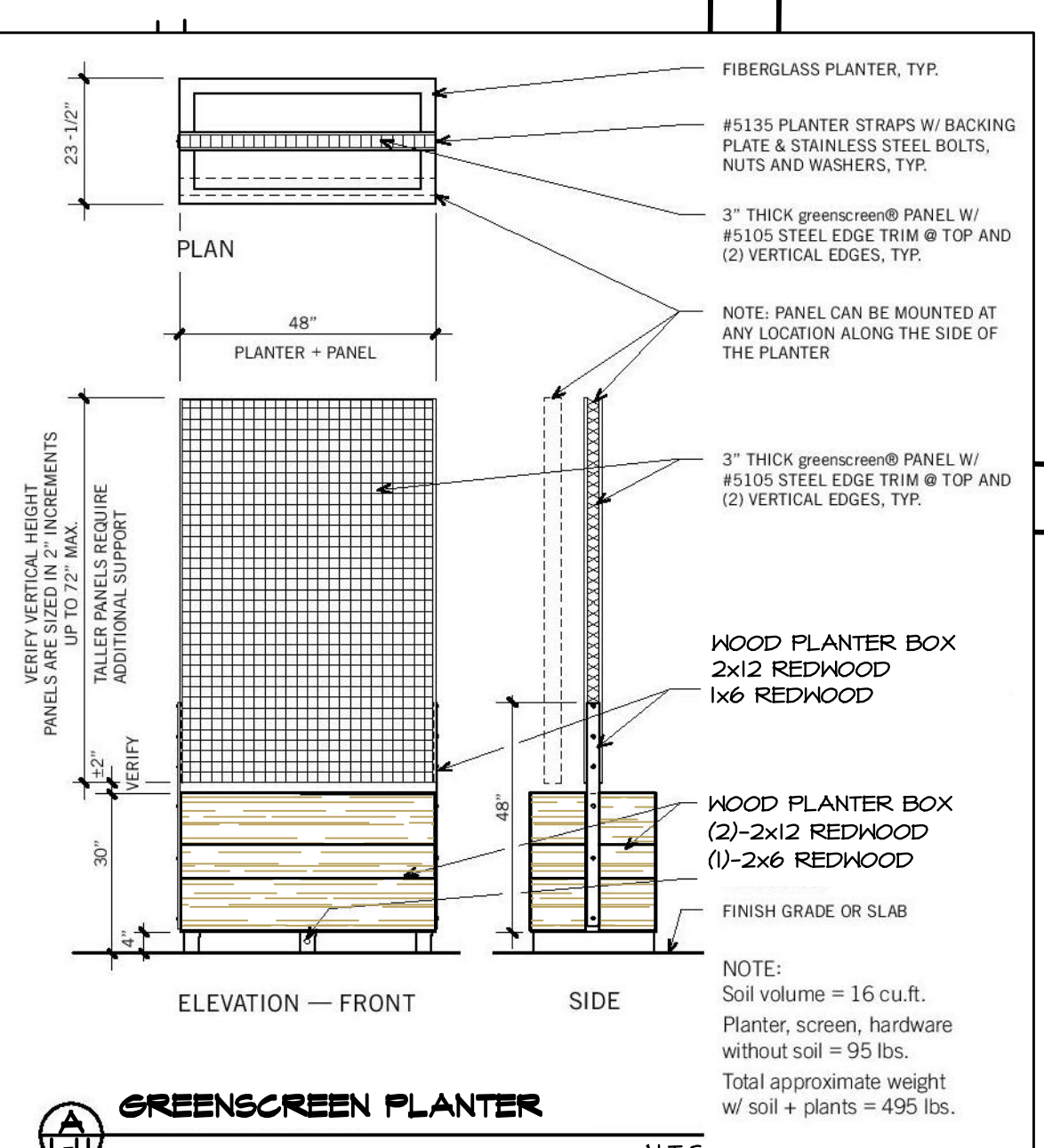
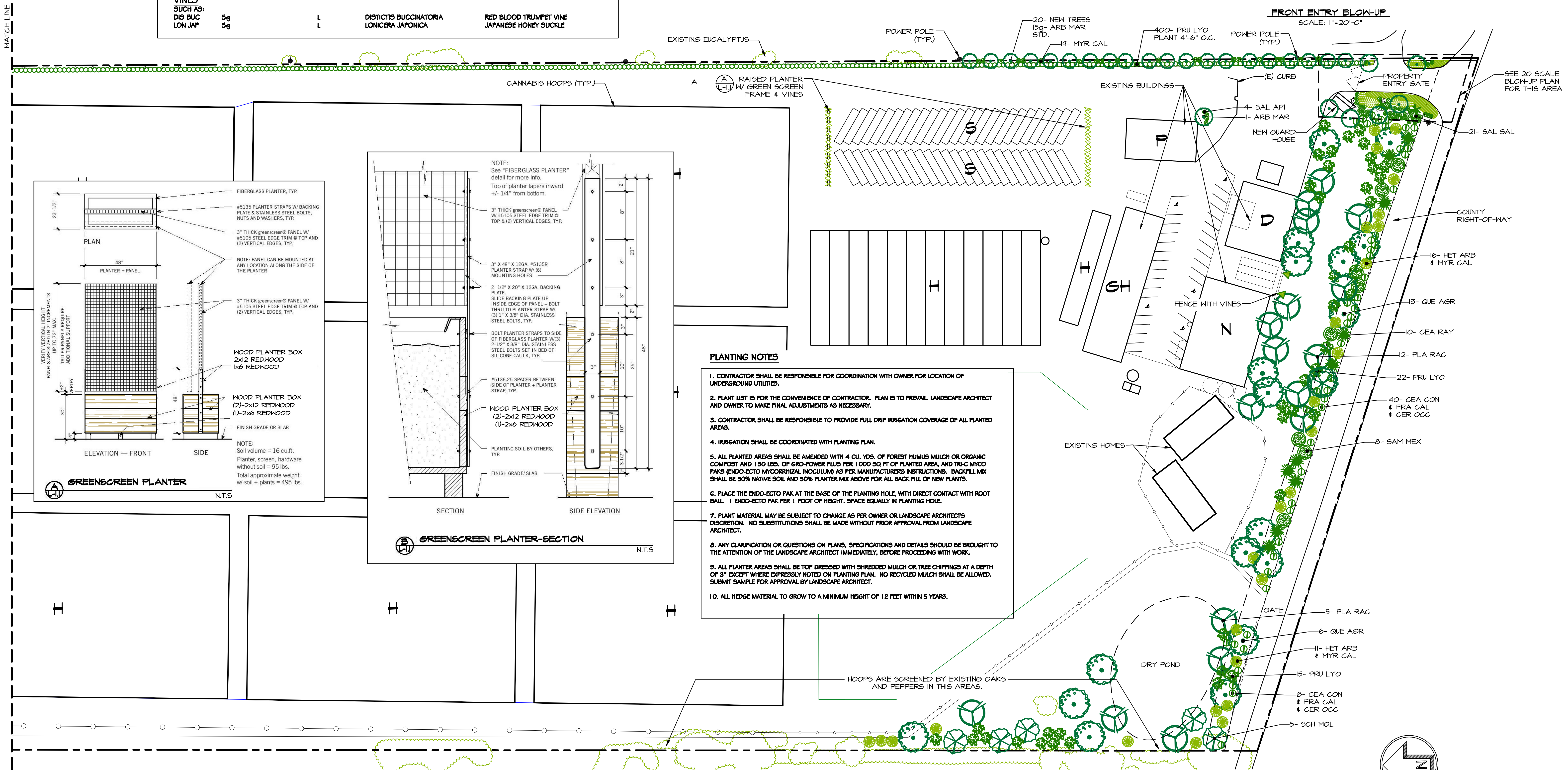
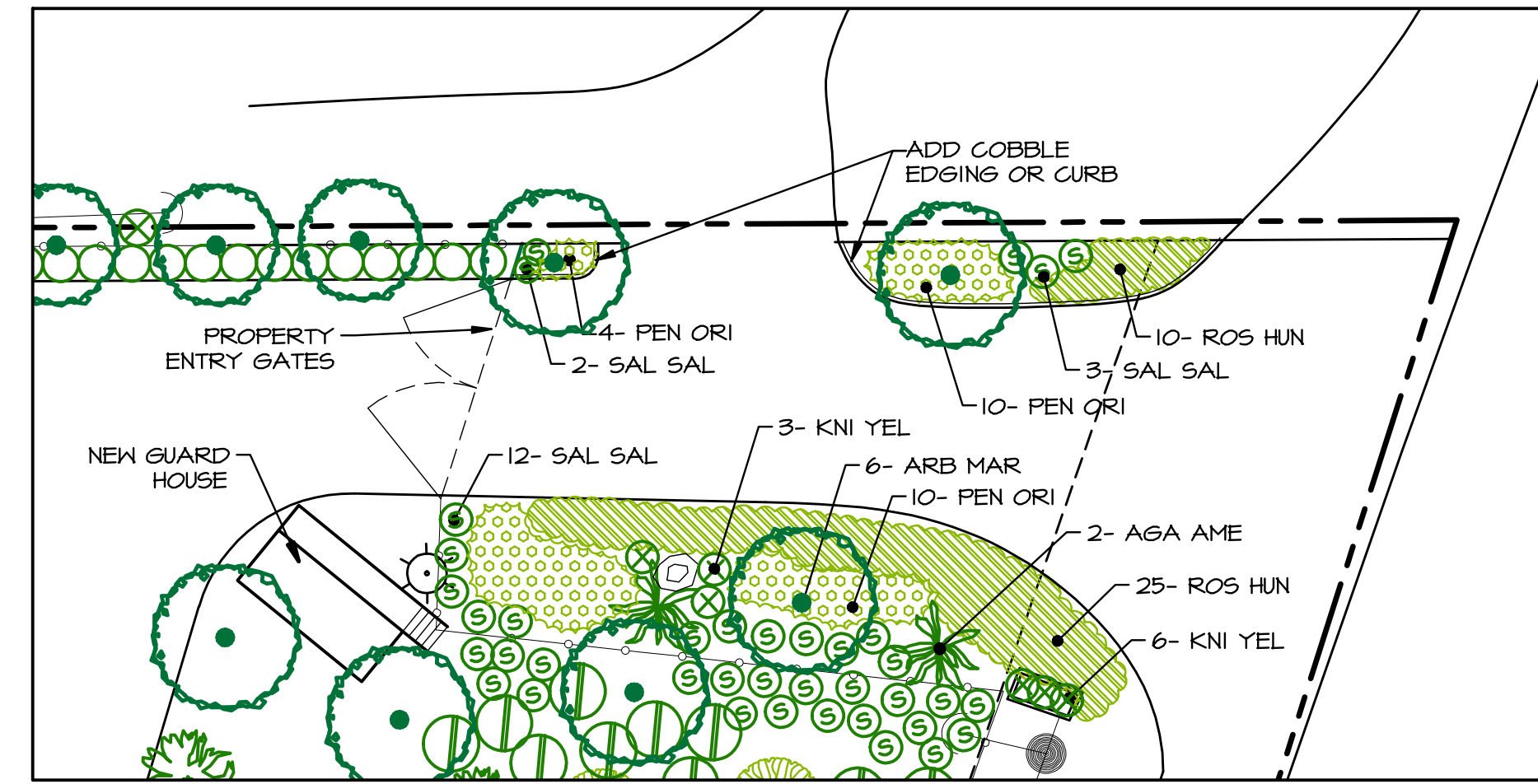
REVISIONS	BY

**PLANT LIST**

SYM	SIZE	QTY	WUCOLS PLANT FACTOR	BOTANICAL NAME	COMMON NAME
<b>TREES</b>					
SUCH AS:					
QUE AGR	15g - 36" box	L		QUERCUS AGRIFOLIA	COAST LIVE OAK
PLA RAC	15g - 24" box	M		PLATANUS RACEMOSA	CALIFORNIA SYCAMORE
SAM MEX	5g - 15 g	L		SAMBUCUS MEXICANA	ELDERBERRY
SCH MOL	15g - 24" box	L		SCHINUS MOLLE	CALIFORNIA PEPPER
<b>SHRUBS</b>					
SUCH AS:					
CEA RAY	5g	L		CEANOTHUS 'RAY HARTMAN'	CALIFORNIA LILAC
CEA CON	5g	L		CEANOTHUS 'CONCHA'	CALIFORNIA LILAC
CER OCC	5g	L		CERCIS OCCIDENTALIS	CALIFORNIA RED BUD
FRA CAL	5g	L		FRANGULA CALIFORNICA	CALIFORNIA COFFEE BERRY
HET ARB	5g	L		HETEROMELES ARBUTIFOLIA	TOYON
MYR CAL	5g	L		MYRICA CALIFORNICA	CALIFORNIA MYRTLE
PRU LYO	5g	L		PRUNUS I. LYONII	CATALINA CHERRY
SAL API	1g	L		SALVIA APIANA	CALIFORNIA WHITE SAGE
SAL SAL	1g	L		SALVIA PT. SAL	PT. SAL SAGE
<b>HEDGE</b>					
SUCH AS:					
PRU LYO	5g	L		PRUNUS I. LYONII	CATALINA CHERRY
<b>VINES</b>					
SUCH AS:					
DIS BUC	5g	L		DISTICTIS BUCCINATORIA	RED BLOOD TRUMPET VINE
LOW JAP	5g	L		LONICERA JAPONICA	JAPANESE HONEY SUCKLE

**ENTRY PLANT LIST**

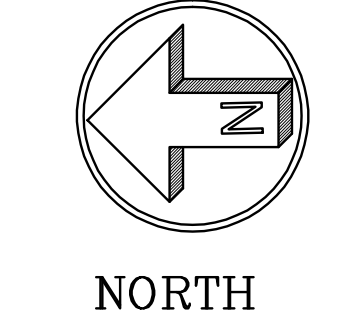
SYM	SIZE	QTY	WUCOLS PLANT FACTOR	BOTANICAL NAME	COMMON NAME
<b>TREES</b>					
SUCH AS:					
ARB MAR	24" Box	L		ARBUTUS MARINA - STD	STANDARD ARBUTUS MARINA
<b>SHRUBS</b>					
SUCH AS:					
AGA AME	5g	L		AGAVE AMERICANA	CENTURY PLANT
KNI YEL	1g	L		KAIHOPIA YELLOW	YELLOW HOT POKERS
PEN ORI	1g	L		PENNISETUM ORIENTALIS	ORIENTAL POUNTAIN GRASS
SAL SAL	1g	L		SALVIA PT. SAL	PT. SAL SAGE
<b>PROPERTY LINE TREES</b>					
ARB MAR	15g	L		ARBUTUS MARINA	STANDARD



- PLANTING NOTES**
1. CONTRACTOR SHALL BE RESPONSIBLE FOR COORDINATION WITH OWNER FOR LOCATION OF UNDERGROUND UTILITIES.
  2. PLANT LIST IS FOR THE CONVENIENCE OF CONTRACTOR. PLAN IS TO PREVAIL. LANDSCAPE ARCHITECT AND OWNER TO MAKE FINAL ADJUSTMENTS AS NECESSARY.
  3. CONTRACTOR SHALL BE RESPONSIBLE TO PROVIDE FULL DRIP IRRIGATION COVERAGE OF ALL PLANTED AREAS.
  4. IRRIGATION SHALL BE COORDINATED WITH PLANTING PLAN.
  5. ALL PLANTED AREAS SHALL BE AMENDED WITH 4 CU. YDS. OF FOREST HUMUS MULCH OR ORGANIC COMPOST AND 150 LBS. OF GRO-POWER PLUS PER 1000 SQ FT OF PLANTED AREA, AND TRI-C MYCO PAKS (ENDO-ECTO MYCORRHIZAL INOCULUM) AS PER MANUFACTURERS INSTRUCTIONS. BACKFILL MIX SHALL BE 50% NATIVE SOIL AND 50% PLANTER MIX ABOVE FOR ALL BACK FILL OF NEW PLANTS.
  6. PLACE THE ENDO-ECTO PAK AT THE BASE OF THE PLANTING HOLE, WITH DIRECT CONTACT WITH ROOT BALL. 1 ENDO-ECTO PAK PER 1 FOOT OF HEIGHT. SPACE EQUALLY IN PLANTING HOLE.
  7. PLANT MATERIAL MAY BE SUBJECT TO CHANGE AS PER OWNER OR LANDSCAPE ARCHITECT'S DISCRETION. NO SUBSTITUTIONS SHALL BE MADE WITHOUT PRIOR APPROVAL FROM LANDSCAPE ARCHITECT.
  8. ANY CLARIFICATION OR QUESTIONS ON PLANS, SPECIFICATIONS AND DETAILS SHOULD BE BROUGHT TO THE ATTENTION OF THE LANDSCAPE ARCHITECT IMMEDIATELY, BEFORE PROCEEDING WITH WORK.
  9. ALL PLANTER AREAS SHALL BE TOP DRESSED WITH SHREDDED MULCH OR TREE CHIPPINGS AT A DEPTH OF 3" EXCEPT WHERE EXPRESSLY NOTED ON PLANTING PLAN. NO RECYCLED MULCH SHALL BE ALLOWED. SUBMIT SAMPLE FOR APPROVAL BY LANDSCAPE ARCHITECT.
  10. ALL HEDGE MATERIAL TO GROW TO A MINIMUM HEIGHT OF 12 FEET WITHIN 5 YEARS.

I HAVE COMPLIED WITH THE CRITERIA OF THE ORDINANCE AND APPLIED THEM ACCORDINGLY FOR THE EFFICIENT USE OF WATER IN THE LANDSCAPE DESIGN PLAN

**LANDSCAPE SCREENING PLAN- ENLARGEMENT**



SCALE: 1" = 50'-0"

Laurel Moser Brady, ASLA  
LANDSCAPE ARCHITECT  
P.O. Box 882  
Los Olivos, Ca. (805) 680-7583

LANDSCAPE SCREENING  
PLAN- ENLARGEMENT

CULTIVATION SITE  
8701 SANTA ROSA ROAD  
LOMPOC, CALIFORNIA

Date	8/13/20
Scale	1"=50'-0"
Drawn	LMB
Job	LOMPOC
Print Date	
Sheet	
Of	Sheets





VIEW FROM SANTA ROSA ROAD





ENTRY-8701 SANTA ROSA ROAD