



COUNTY OF SANTA BARBARA

**RISE**

**REOPENING IN SAFE ENVIRONMENT**

**MAY 19, 2020**

# Purpose – Local Guide to State’s Four Stage Resilience Roadmap

- Describes **WHEN** the County may begin to reopen institutions and businesses safely while prioritizing public health and upon approval by the State (**State dictates what industries fall under each Stage**)
- Provides **HOW** to limit the spread of COVID-19 and establishes tools and approaches to minimize future outbreaks once restrictions are loosened or lifted
- Offers **WHAT** decision points to identify how phased transitions occur and the local criteria that might inform decisions to loosen or tighten restrictions



# The Guide: “A Santa Barbara County Playbook”

Living document comprised of three parts:

- Core Framework
- Industry Sector Guidelines
- Readiness and Containment Plan

# The Guide: Four Main Sources

1. The Federal Government (Guidelines: Opening Up America Again)
2. The State of California (Roadmap to modify the Stay-at-Home Order and Update on the Pandemic Roadmap)
3. Resolve to Save Lives (RSL), a global health initiative that describes the “adaptive response” to the pandemic
4. The San Luis Obispo START Guide

# The Process: Marathon of Meetings (3 Weeks)

- Organized project team and engaged REACH
- Established independent medical and public health expert panel
- Identified Key Stakeholder leaders to coordinate community and industry informal roundtable discussions and survey submittals
- Panel meetings and Roundtables ensued (The Marathon)
- State stage accelerations incorporated
- Feedback compiled and document developed
- Submitted to Public Health Officer for approval

# The Core Framework: Science Based & Data Driven

Presented by Henning Ansorg, M.D.

**Table 4. Adapted guidelines for loosening restrictions, by category, with State Readiness Requirements for Variance.**

Epidemiology	Healthcare	Public health
<b>State Indicators Required to Accelerate Through Stage 2</b>		
<ul style="list-style-type: none"> <li>✓ 1 case per 10,000 in last 14 days (45)*</li> <li>✓ No COVID-19 death in last 14 days*</li> </ul> <p>*These State epidemiology indicators were appealed by the Santa Barbara County Board of Supervisors on May 13, 2020</p>	<ul style="list-style-type: none"> <li>✓ County or regional capacity to accommodate surge of 35% due to COVID cases in addition to providing care for non COVID cases</li> <li>✓ Plan to protect workforce</li> </ul>	<ul style="list-style-type: none"> <li>✓ At least 15 staff per 100,000 county population trained for contact tracing.</li> <li>✓ Availability of temporary housing to shelter (for COVID-19 isolation) 15% of county residents experiencing homelessness</li> <li>✓ Skilled nursing facilities have <u>14 day</u> supply of PPE for staff, with established process for ongoing procurement from non-state supply chains.</li> </ul>

# The Core Framework: Science Based & Data Driven

Presented by Henning Ansorg, M.D.

Santa Barbara County Indicators Recommended for all Stages (in addition to State indicators)		
<ul style="list-style-type: none"> <li>✓ Less than 10% positivity of tests in last 14 days</li> <li>✓ Less than 2% fatality rate in last 14 days</li> <li>✓ Over the past 14 days, number of patients hospitalized with COVID-19 illness is stable</li> </ul>	<ul style="list-style-type: none"> <li>✓ Ability – including staffing – to increase up to 30% number of patients treated in intensive care units from current census</li> <li>✓ Ability – including staffing – to screen large numbers of symptomatic patients safely (e.g., outdoor tents, drive through)</li> <li>✓ Hospital facilities have a robust plan to protect the hospital workforce, both clinical and nonclinical with PPE.</li> <li>✓ Sufficient face masks such that patients seeking care have appropriate face covering even if cases increase by 30%</li> <li>✓ Ensure at least baseline capacity in general health services, including through expansion of telemedicine for COVID-19 and usual care</li> <li>✓ Health care facilities enforce policies and redesign to minimize possibility of exposure at triage and all other locations</li> </ul>	<ul style="list-style-type: none"> <li>✓ Contacts elicited for at least 90% of cases</li> <li>✓ 100% of symptomatic contacts and others with symptoms undergo testing within 24 hours of identification of symptoms, unless definable as “probable case” per CDC</li> <li>✓ Designated facilities for non-hospitalized COVID-19-infected people who can’t be safely cared for at home (e.g., because of space constraints, homelessness, medically vulnerable household members, or otherwise)</li> <li>✓ Demonstrated ability to convey physical distancing recommendations</li> </ul>

# The Core Framework: Science Based & Data Driven

Presented by Henning Ansorg, M.D.

**Table 5. Adapted mitigation measures needed when one or more criteria in at least 2 of 3 columns are met.**

Epidemiology	Healthcare	Public health
<ul style="list-style-type: none"> <li>✓ Increasing new case counts of at least 10% for 5 consecutive days above a stable baseline in the context of no substantial increase in testing</li> <li>✓ Doubling time of cases less than 5 days (from a stable baseline)</li> <li>✓ High likelihood of exposure at mass gathering or congregation of people or delayed detection of a case (&gt;5 days from a mass gathering or long-term care facility)</li> <li>✓ Increasing number of new health care worker infections averaged over a 7-day period</li> </ul>	<ul style="list-style-type: none"> <li>✓ Inability to scale up to 35% the number of ICU patients from current census (including staffing)</li> <li>✓ Can no longer screen large numbers of symptomatic patients safely, including staffing (e.g., outdoor tents, drive through)</li> <li>✓ Less than 4 weeks supply of PPE for 35% increase in current caseload</li> <li>✓ Insufficient PPE for all health care workers</li> <li>✓ Insufficient face masks such that all patients seeking care have appropriate face coverings.</li> <li>✓ Do not have baseline capacity in general health services, including through expansion of telemedicine for COVID-19 and usual care</li> <li>✓ Health care facilities can no longer be structured to reduce possibility of exposure at triage and all other locations</li> </ul>	<ul style="list-style-type: none"> <li>✓ Cannot elicit contacts for 20% or more of cases</li> <li>✓ 10% or more of non-household symptomatic contacts fail to get tested or get tested in more than 24 hours of symptom onset</li> <li>✓ No designated facilities for non-hospitalized COVID-19 infected people who can't be safely cared for at home (e.g., because of space constraints, medically vulnerable household members, or otherwise)</li> <li>✓ No longer have the ability to convey physical distancing recommendations.</li> <li>✓ Inability to test 2 per 1,000 residents, per day</li> <li>✓ Greater than 7% test positivity over 7 days, average</li> <li>✓ Increasing test positivity over prior 7 days</li> </ul>

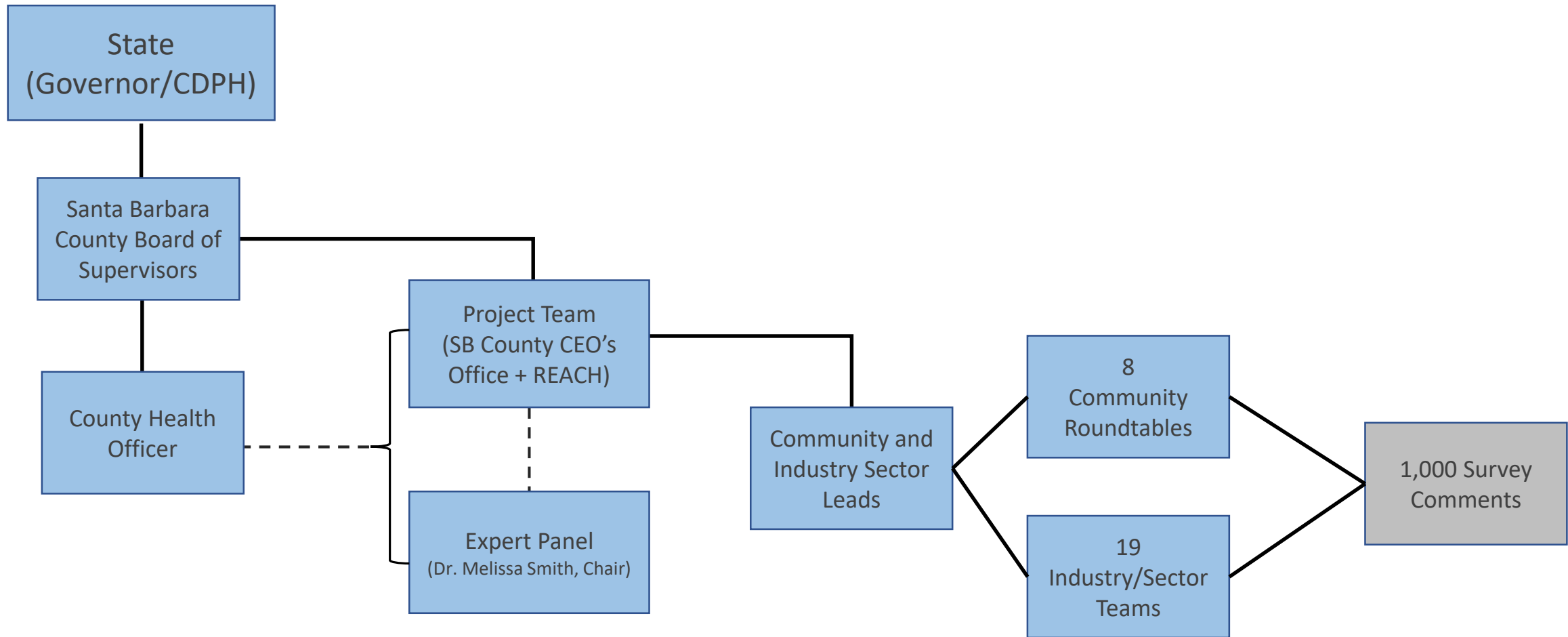


# The Experts – A Few of Our Local Heroes

THANKS for your time and sharing your professional expertise!

- Melissa Smith, M.D. (Chair)
- Dr. J. Trees Ritter, D.O., FIDSA
- Lynn Fitzgibbons, M.D.
- Kevin Ferguson, M.D.
- Paige Batson, M.A., R.N.

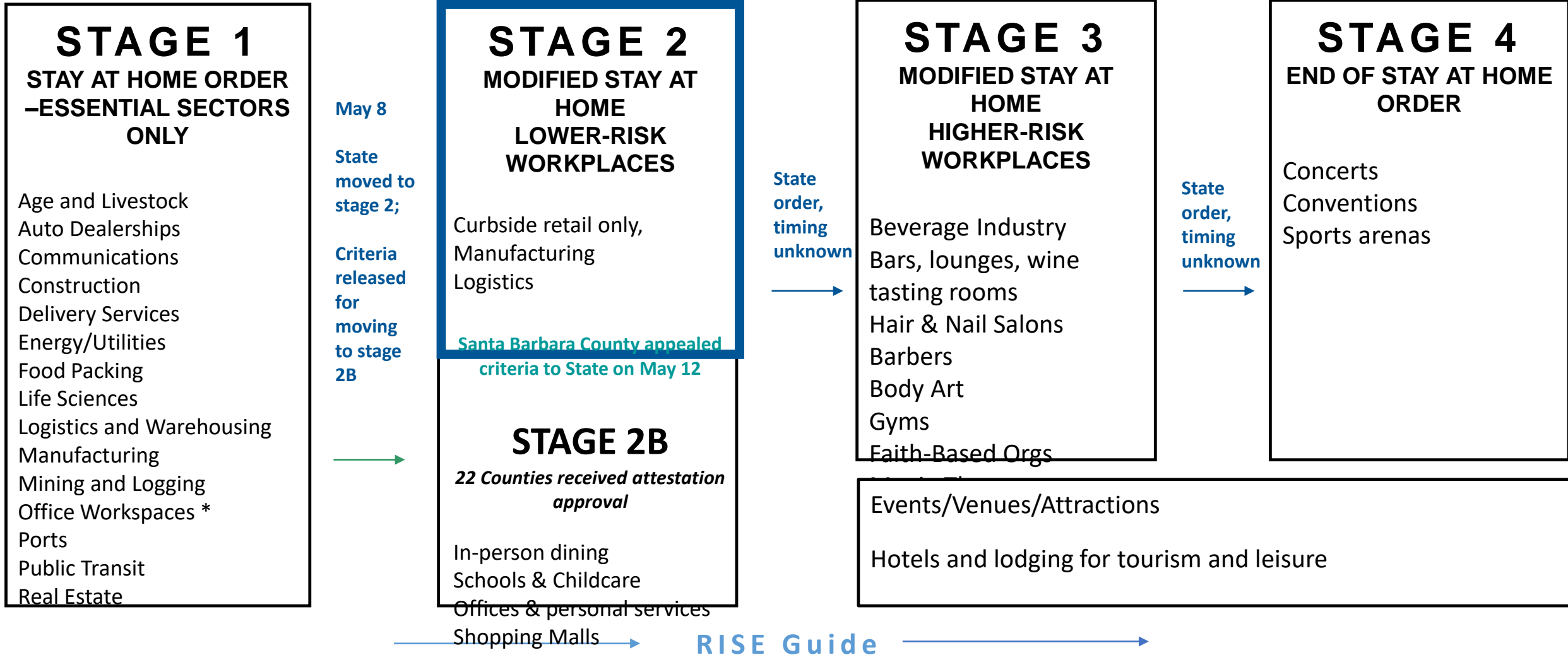
# Project Structure



# CALIFORNIA RESILIENCE ROADMAP

## CALIFORNIA STATE ORDER

### SANTA BARABRA COUNTY ORDER



Supports Santa Barbara County to advance through the stages of the State Resilience Roadmap as quickly and safely as possible

# Stakeholder Feedback



## Innovative ideas

- Expand available space for physical distancing
- Good Will Ambassadors who can support education and guideline adherence.
- Community consortium to purchase PPE

## Biggest challenges

- How to effectively plan at community level with uncertainty in state approach and timeline
- Guidelines increase expenses as well as revenue by capping demand
- State Guidelines are not equitable across; some criteria is too restrictive

# The Stakeholders – Our Economic Cornerstone

27 Roundtables with over 350 Participants

10 Cities and Community Service Districts

14 Business and Industry Sectors

1 Thought Leaders Group

2 Community Based and Labor Organizations

**Thank you for sharing your input and representing our community!**

# Readiness and Containment Plan: CDPH Recommendation to Accompany Attestation

Details HOW the County plans to consider the following:

- Testing
- Contact Tracing
- Protecting the Vulnerable
- Acute Care Surge
- Essential Workers
- Community Engagement
- Relationship to Surrounding Counties

# Conclusion and Questions

- Guide will be updated as needed to conform to State and local orders
- Guide is available and Feedback can be submitted on-line at [ReadySBC.org](http://ReadySBC.org) website
- Staff recommends your Board Receive and File the RISE Guide