

# PROPOSED SPEED LIMITS: DISTRICT 1



Santa Claus Lane  
from Padaro Ln to U.S. 101 Southbound On-Ramp



**KEEP EXISTING SPEED LIMIT OF 25 MPH**  
Business District

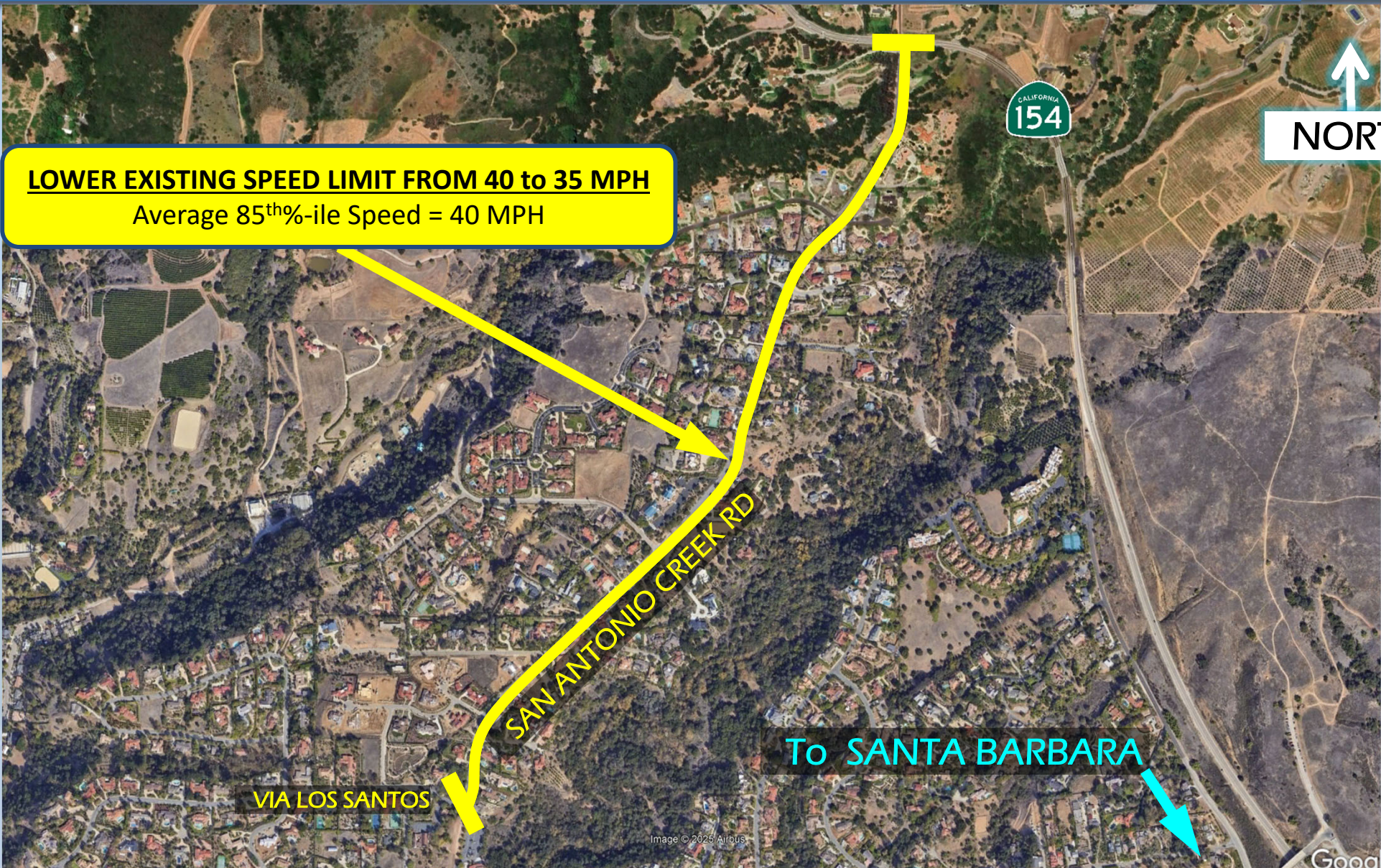
**LOWER EXISTING SPEED LIMIT FROM 55 max. to 30 MPH**  
Average 85<sup>th</sup>-ile Speed = 35 MPH

U.S. 101  
Southbound  
On-Ramp

# PROPOSED SPEED LIMITS: DISTRICT 1



San Antonio Creek Road  
from Via Los Santos to State Route 154



**LOWER EXISTING SPEED LIMIT FROM 40 to 35 MPH**  
Average 85<sup>th</sup>-ile Speed = 40 MPH

NORTH

SAN ANTONIO CREEK RD

To SANTA BARBARA

VIA LOS SANTOS

# PROPOSED SPEED LIMITS: DISTRICT 4



California Boulevard  
from Broadway to the City of Santa Maria

NORTH →

**REMOVE EXISTING SPEED LIMIT OF 30 MPH**  
Meets residence district criteria from Hartnell Rd  
to the City of Santa Maria = 25 MPH

