

**Legal Description for
07AGP-00000-00012**

**Parcel 2 of Parcel Map No. 14,630, in the County of Santa Barbara, State of California,
recorded in Book 61, at Pages 66 to 69, inclusive, of Parcel Maps, in the Office of the
County Recorder of said County.**

G:\GROUP\PERMITTING\Case Files\AGP\07 cases\07AGP-00000-00012\alfWilliams new contract\Cleanlegal\07AGP00012.doc

APPROVED AS TO FORM
AND SURVEY CONTENT

4/17/09

Gay Mithler Deputy

MICHAEL B. EMMONS, PLS 5899
COUNTY SURVEYOR
LICENSE EXP. _____



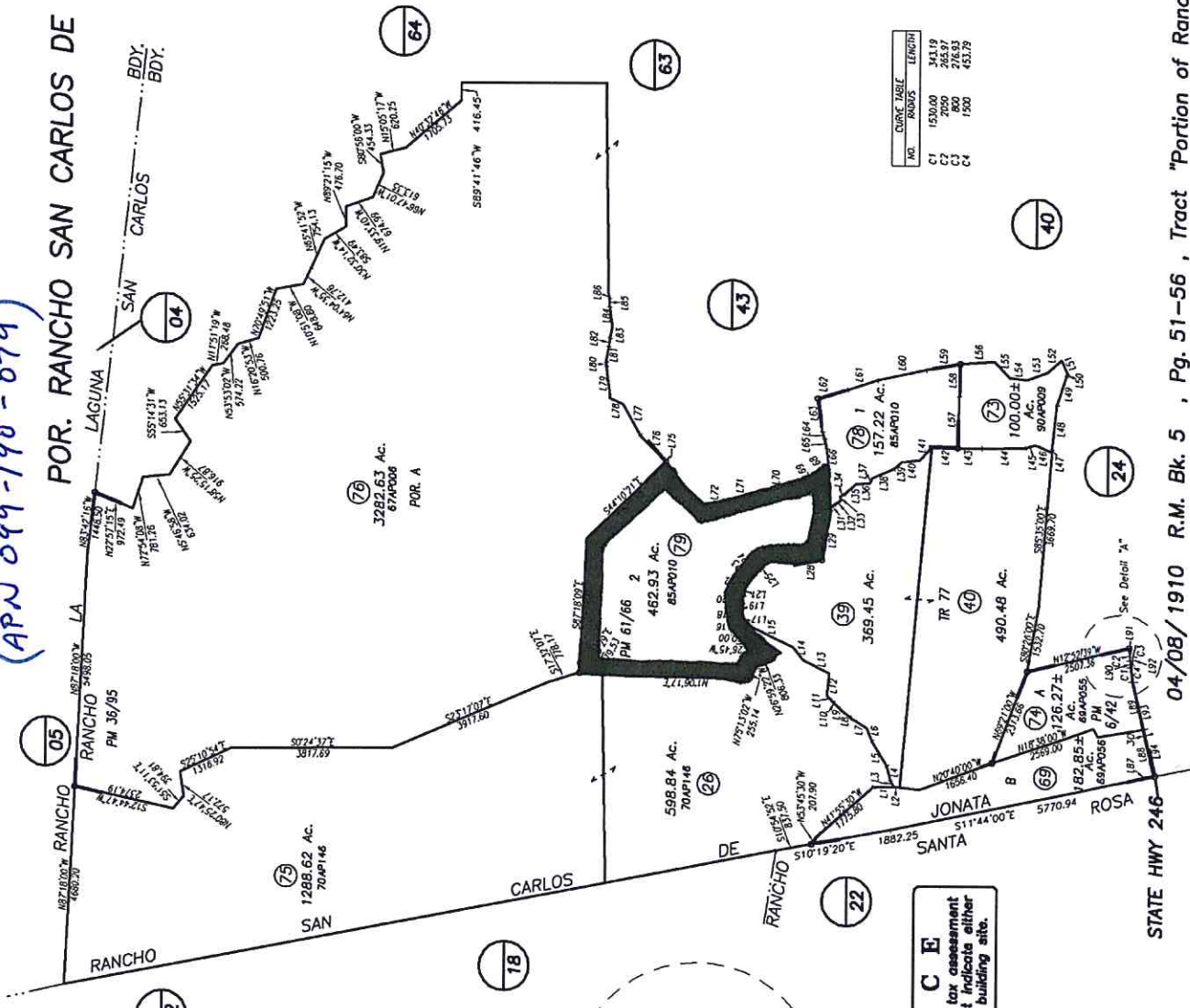
07AGP-00000-00012
(APN 099-190-079)

POR. RANCHO SAN CARLOS DE JONATA

099-19



1" = 2640'
SCALE



COURT. TABLE

NO.	RADIUS	LENGTH
C1	1530.00	343.19
C2	2000	265.97
C3	800	276.93
C4	1500	453.79

LINE TABLE

NO.	BEARING	DISTANCE
L1	N75°23'00"W	465.00
L2	S6°40'59"W	153.57
L3	S75°00'00"W	199.00
L4	S73°30'00"W	256.00
L5	S55°11'00"W	676.39
L6	S65°12'49"W	321.64
L7	S33°25'40"W	424.74
L8	S45°00'00"W	191.00
L9	S47°00'00"W	175.60
L10	S47°24'00"W	96.36
L11	S46°00'00"W	160.09
L12	S50°00'00"W	177.27
L13	S50°29'50"W	493.61
L14	S53°23'40"W	386.76
L15	S59°27'19"W	1955.73
L16	S75°00'00"W	175.00
L17	S72°14'43"W	155.55
L18	S72°11'44"W	102.98
L19	S76°03'34"W	161.48
L20	S75°00'00"W	151.39
L21	N0°32'15"W	215.38
L22	N62°49'59"W	140.16
L23	N46°37'05"W	231.57
L24	N47°25'45"W	150.00
L25	N47°25'45"W	215.38
L26	N07°16'59"W	215.38
L27	N0°32'21"W	660.26
L28	N1°32'23"W	546.36
L29	N77°25'00"W	199.00
L30	S72°50'00"W	69.20
L31	N62°29'43"W	199.00
L32	N82°17'53"W	162.13
L33	S85°15'11"W	87.92
L34	S85°15'11"W	125.38
L35	N41°25'50"W	353.67
L36	N20°45'17"W	314.00
L37	N41°25'50"W	125.38
L38	N41°25'50"W	240.55
L39	N41°25'50"W	240.55
L40	N67°27'17"W	427.23
L41	N47°14'49"W	421.91
L42	S71°00'00"W	570.00
L43	S71°00'00"W	1027.30
L44	S15°07'00"W	231.00
L45	S15°07'00"W	424.70
L46	S23°51'00"W	424.70
L47	S23°51'00"W	424.70
L48	S23°51'00"W	424.70
L49	S23°51'00"W	424.70
L50	S23°51'00"W	424.70
L51	S23°51'00"W	424.70
L52	S23°51'00"W	424.70
L53	S23°51'00"W	424.70
L54	S23°51'00"W	424.70
L55	S23°51'00"W	424.70
L56	S23°51'00"W	424.70
L57	S23°51'00"W	424.70
L58	S23°51'00"W	424.70
L59	S23°51'00"W	424.70
L60	S23°51'00"W	424.70
L61	S23°51'00"W	424.70
L62	S23°51'00"W	424.70
L63	S23°51'00"W	424.70
L64	S23°51'00"W	424.70
L65	S23°51'00"W	424.70
L66	S23°51'00"W	424.70
L67	S23°51'00"W	424.70
L68	S23°51'00"W	424.70
L69	S23°51'00"W	424.70
L70	S23°51'00"W	424.70
L71	S23°51'00"W	424.70
L72	S23°51'00"W	424.70
L73	S23°51'00"W	424.70
L74	S23°51'00"W	424.70
L75	S23°51'00"W	424.70
L76	S23°51'00"W	424.70
L77	S23°51'00"W	424.70
L78	S23°51'00"W	424.70
L79	S23°51'00"W	424.70
L80	S23°51'00"W	424.70
L81	S23°51'00"W	424.70
L82	S23°51'00"W	424.70
L83	S23°51'00"W	424.70
L84	S23°51'00"W	424.70
L85	S23°51'00"W	424.70
L86	S23°51'00"W	424.70
L87	S23°51'00"W	424.70
L88	S23°51'00"W	424.70
L89	S23°51'00"W	424.70
L90	S23°51'00"W	424.70
L91	S23°51'00"W	424.70
L92	S23°51'00"W	424.70
L93	S23°51'00"W	424.70
L94	S23°51'00"W	424.70

NOTICE
Assessor's Parcels are for tax assessment purposes only and do not indicate either parcel legality or a valid building site.

1" = 880'
SCALE

Assessor's Map Bk, 099-Pg, 19
County of Santa Barbara, Calif.

LD/09

190-77 info 78 & 79

04/08/1910 R.M. Bk. 5 , Pg. 51-56 , Tract "Portion of Rancho San Carlos De Jonata"

STATE HWY 246