

Laguna County Sanitation District

FY 2019 – 2020
Rates and Fees



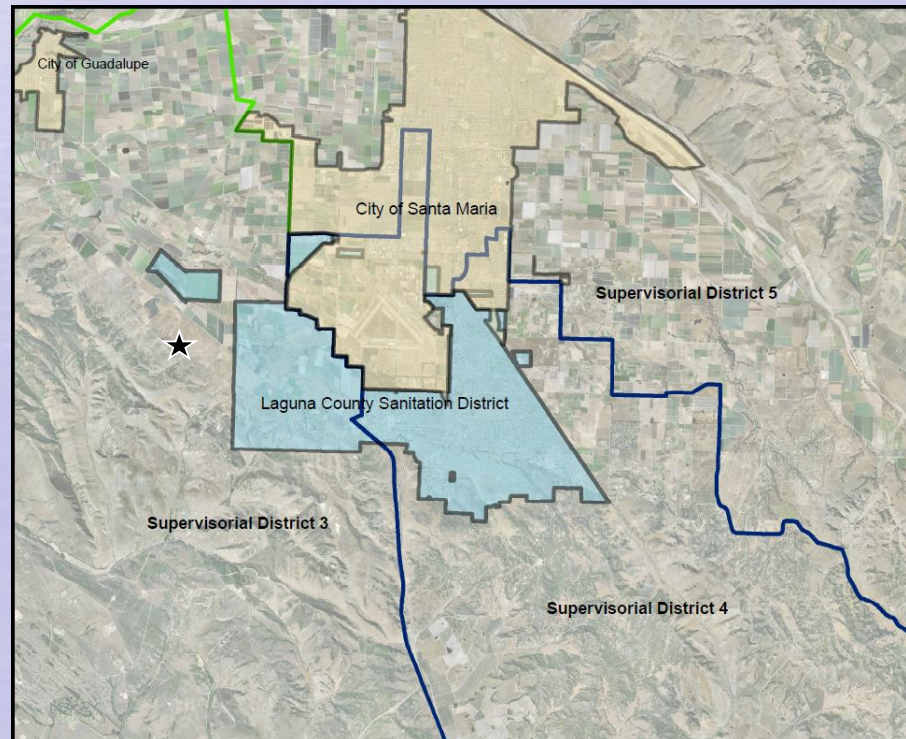
Laguna County Sanitation District



- Dependent special district created in 1958
- Provides wastewater services to Orcutt and unincorporated Santa Maria area
- Regulated by:
 - RWQCB Order R3-2011-0217 (plant)
 - EPA (injection well)
 - SWRCB 2006-0003 (sewer system)
 - SWRCB – DDW (laboratory)
 - SWRCB (operator licensing)
 - SWRCB 2014-0057-DWQ (industrial)
 - APCD (air emissions)
- Conserves and protects resources

Annual Rates and Fees Ordinance

- Public noticing pursuant to Prop 218
 - Mailer to 12,278 customers on 10,627 parcels
- Hearing date published pursuant to Government Code in Santa Maria Times
- Open house May 11
- A small number of written responses (less than 1%)



Sewer Charge Rates

- Pay for annual operation, maintenance, replacement, and reserves
- Collected on the tax roll
- 3.8% increase proposed for FY 2019-2020
 - Based on CPI
 - Prior increases for necessary plant upgrades as identified in the Master Plan presented to the Board on October 11, 2011

Master Plan



- Assessed condition of plant and looked at future needs
- Reviewed regulatory criteria
- Compared treatment and discharge alternatives
- Defined Phase 1 (replace existing) and Phase 2 (future capacity) conditions
- Evaluated costs and revenue needs

Proposed Sewer Charge

Residential unit equivalent (RUE) rate

Proposed annual rate	\$1,047.85
<u>Last year's rate</u>	<u>\$1,009.49</u>
Rate increase/year	\$ 38.36

Equivalent to \$3.20/month (monthly rate of \$87.32)

Multiple Family Residential	= \$848.76/year
School	= \$54.36 per cap/year
Commercial	= Based on flow and load

How LCSD Compares Countywide

<u>Treatment Level</u>	<u>Agency</u>	<u>Monthly Rate</u>	<u>Inc.</u>
Tertiary	Summerland	\$126.52	3.5%
	Lompoc	\$ 92.80	
	Laguna	\$ 87.32	3.8%
	Vandenberg Village	\$ 75.67	
Secondary	Montecito	\$137.09*	7.2%
	Santa Ynez	\$ 92.20*	3.7%
	CSA 12 Mission Canyon	\$ 79.77	6.0%
	Los Alamos	\$ 74.36*	5.0%
	Carpinteria	\$ 68.41*	4.0%
	Cuyama	\$ 66.00	
	Mission Hills	\$ 60.21	8.0%
	Santa Barbara	\$ 54.27	1.0%
	Guadalupe	\$ 50.68	4.0%
	Goleta West Sanitary	\$ 47.45*	
	Goleta Sanitary	\$ 45.20*	3.6%
	Solvang	\$ 35.84	
	Buellton	\$ 30.45	
	Santa Maria	\$ 20.16	
Average	\$ 69.13		

* These rates include estimated property tax contributions.

Total Water Cost Comparison

<u>Agency</u>	<u>Water/Mo</u>	<u>Water and Sewer/Mo</u>
Montecito + Montecito Water	\$133.09	\$270.18
Summerland + Montecito Water	\$133.09	\$259.61
CSA 12 Mission Canyon + Santa Barbara	\$159.74	\$239.51
Carpinteria + Carpinteria Valley Water	\$127.90	\$196.31
Santa Ynez + Santa Ynez RWCD 1	\$ 90.90	\$183.10
Lompoc	\$122.88	\$176.64
Santa Barbara	\$121.41	\$175.68
Goleta West Sanitary + Goleta Water	\$116.69	\$164.14
Goleta Sanitary + Goleta Water	\$116.69	\$161.89
Cuyama	\$ 87.20	\$153.20
Solvang	\$109.93	\$145.77
Laguna + Golden State Water	\$ 54.68	\$142.00
Mission Hills	\$ 62.94	\$123.15
Los Alamos	\$ 43.55	\$117.89
Vandenberg Village	\$ 35.34	\$111.01
Guadalupe	\$ 46.10	\$ 96.78
Santa Maria	\$ 76.12	\$ 96.28
Buellton	\$ 65.31	\$ 95.76
Average		\$161.44

Developer Impact Fees



- Paid by development for sewer system equity buy-in
 - Trunk line fees fund collection system improvements
 - Connection fees fund treatment and disposal improvements

Developer Impact Fees

- Fees adjusted by indices pursuant to ordinances and agreements
- Connection fee (0.6%) per RUE \$7,502
- Trunk Line Fees
 - Dutard trunk line (0.6%) per RUE \$1,064
 - Bradley trunk line (5.5%) per RUE \$2,686

Recommendations

- Adopt ordinance setting the rates and fees for FY 2019-2020

