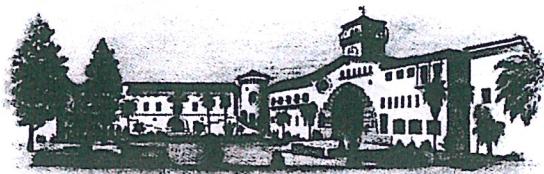


# County Of Santa Barbara

**Mona Miyasato**  
*County Executive Officer*

105 East Anapamu Street  
Room 406  
Santa Barbara, California 93101  
805-568-3400 • Fax 805-568-3414  
www.countyofsb.org



**Executive Office**

*Assistant County Executive Officers*  
**Jeff Frapwell**  
**Bernard Melekian**  
**Terri Nisich**  
**Matthew Pontes**

*Deputy County Executive Officer*  
**Dennis Bozanich**

December 11, 2019

Secretary Michael R. Pompeo  
U.S. Department of State  
2201 C Street NW  
Washington DC, 20520

Dear Secretary Pompeo:

This letter is reference to Executive Order 13888, "On Enhancing State and Local Involvement in Resettlement."

As County Executive Officer of Santa Barbara, I consent to initial refugee resettlement in the unincorporated areas of Santa Barbara, California as per the terms of the Executive Order. Consent is valid until withdrawn.

Sincerely,

Mona Miyasato  
County Executive Officer

Attachment

cc: Principal Deputy Assistant Secretary Carol T. O'Connell  
Bureau of Population, Refugees, and Migration  
U.S. Department of State

# County Of Santa Barbara

**Mona Miyasato**  
*County Executive Officer*

105 East Anapamu Street  
Room 406  
Santa Barbara, California 93101  
805-568-3400 • Fax 805-568-3414  
[www.countyofsb.org](http://www.countyofsb.org)



**Executive Office**

*Assistant County Executive Officers*  
**Jeff Frapwell**  
**Bernard Melekian**  
**Terri Nisich**  
**Matthew Pontes**

*Deputy County Executive Officer*  
**Dennis Bozanich**

Attachment : County Jurisdiction

As County Executive Officer of County of Santa Barbara, I confirm the following municipalities are within the jurisdiction of the county:

- Buellton
- Carpinteria
- Goleta
- Guadalupe
- Lompoc
- Santa Barbara
- Santa Maria
- Solvang

Mona Miyasato, County Executive Officer

---