

**Landscape Design Intent:**

Maintain the semi-rural setting of the site by incorporating low wood rail fencing, native sandstone, native plants, and plant materials with contrasting colors. Plant materials selected are a mix of flowering and non-flowering with green, blue, and grey foliage colors. Shrubs and groundcovers will be planted very close together to reduce the amount of weeds and to quickly achieve a robust looking landscape. Large specimen native trees have been incorporated into the design to mitigate the loss of existing trees. Plants have been carefully selected for durability, low water use, and low maintenance.

New evergreen native tree to match existing: *Quercus agrifolia* / Coast Live Oak

New colored concrete sidewalk, typ. Color of sidewalk to match decomposed granite color.

Existing decomposed granite path to remain.

New durable evergreen groundcover such as: *Lippia nodiflora* / Kurapia

Join new colored concrete sidewalk with existing decomposed granite sidewalk.

New sun/shade tolerant California native screen shrubs such as: *Arctostaphylos 'Howard McMinn'* / Howard McMinn Manzanita  
*Arctostaphylos 'Sunset'* / Sunset Manzanita  
*Fremontodendron 'Ken Taylor'* / Flannel Bush  
*Malosma laurina* / Laurel Sumac  
*Rhus integrifolia* (or *Rhus ovata*) / Lemonadeberry  
*Prunus ilicifolia* ssp. *lyonii* / Catalina Cherry  
*Romneya coulteri* / Matilija poppy  
*Venegasia carpesioides* / Canyon Sunflower

New evergreen native conifer to match existing: *Cupressus macrocarpa* / Monterey Cypress  
1'-6" Wide native sandstone grouted cobble strip at back of curb, typ. For landscape maintenance access.

Existing decomposed granite path to remain.

Join new concrete sidewalk with existing decomposed granite sidewalk.

Existing white stucco wall to remain.  
New colored concrete sidewalk, typ. Color and finish of sidewalk to match existing pedestrian ramps along the west side of San Ysidro Road (Davis Colors Palamino #5447). Note: If feasible, the section of path west of San Ysidro Road and north of the west side of North Jameson Lane will be decomposed granite instead of colored concrete.

New ornamental grass accents around boulders such as: *Lygum spartum* / Esparto Grass

New evergreen perennial such as: *Lomandra longifolia* 'Steeley Slim' / Steeley Slim Mat Rush or *Dianella revoluta* 'Baby Bliss' / Baby Bliss Flax Lily  
Mixed shrubs and groundcovers in middle island planter such as:

*Agave attenuata* / Foxtail Agave  
*Arctostaphylos 'Sunset'* / Sunset Manzanita  
*Carex pragensilis* / California Meadow Sedge  
*Chondropetalum tectorum* / Cape Rush  
*Lippia nodiflora* / Kurapia  
*Lygum spartum* / Esparto Grass  
*Westringia 'Grey Box'* / Compact Coast Rosemary  
Low flowering perennial at splitter islands such as: *Tulbaghia violacea* / Society Garlic or *Limonium perezii* / Sea Lavender

**Preliminary Irrigation Notes:**

Water source is potable water, to be serviced by Montecito Water District.

Irrigation system shall comply with all requirements of the state of California Model Water Efficient Landscape Ordinance and County of Santa Barbara Standards for Landscape design.

A dedicated irrigation submeter will be installed. If required, an irrigation backflow device will also be installed.

All new plantings will be irrigated.

All valves shall be separated by sun/ shade requirements, plant type, and water needs.

All landscaping shall be irrigated with drip irrigation. Dripline will be inline emitter type such as Netatim RW drip line.

New trees will be irrigated with drip irrigation rings on separate valve(s) from shrubs and groundcover.

Install all plastic valve boxes where they will be screened by plants.

Irrigation system will be installed in accordance with manufacturer's specifications and building codes.

All pipe installed under paving, through walls or footings must be placed inside schedule 40 PVC sleeves.

Irrigation controller run times shall be adjusted to not allow any irrigation water overspray onto paved surfaces.

Existing tree to be removed, typ. See existing tree/ vegetation report prepared by Rincon Consultants.

New 3' Wide truncated dome detectable tiles, typ. per County of Santa Barbara Public Works standards.

New colored and textured concrete driving surface with 30"x30" scorelines. Davis colors "Dark Grey" #8084 or #860 concrete color.

New colored concrete sidewalk, typ. Color and finish of sidewalk to match existing pedestrian ramps along the west side of San Ysidro Road (Davis Colors Palamino #5447).

Existing tree to remain in place and to be protected, typ. See existing tree/ vegetation report prepared by Rincon Consultants.

Existing fence to remain.

New native sandstone grouted cobble paving grouted to engineered concrete subslab. 8' Width minimum.

New flowering groundcover such as: *Carissa 'Green Carpet'* / Prostrate Natal Plum

New native sandstone planter wall, 20" high max, with 30" high max. high boulders set into wall.

New deciduous native tree to match existing: *Platanus racemosa* / California Sycamore

New wood split rail or Peeler Pole fence. 30" high max. to top rail, 36" high max. to top of posts. Option for faux wood concrete posts.

New concrete crosswalks with white stripes per County of Santa Barbara Public Works standards.

(E) *Pittosporum* sp.

(E) *Heisteria macrocarpa*

(E) *Pittosporum* sp.

(E) *Pittosporum* sp.

(E) *Pittosporum* sp.

(E) *Pittosporum* sp.

(E) *Pittosporum* sp.

(E) *Pittosporum* sp.

(E) *Pittosporum* sp.

(E) *Pittosporum* sp.

(E) *Pittosporum* sp.

(E) *Pittosporum* sp.

(E) *Pittosporum* sp.

(E) *Pittosporum* sp.

(E) *Pittosporum* sp.

(E) *Pittosporum* sp.

(E) *Pittosporum* sp.

(E) *Pittosporum* sp.

(E) *Pittosporum* sp.

(E) *Pittosporum* sp.

(E) *Pittosporum* sp.

(E) *Pittosporum* sp.

(E) *Pittosporum* sp.

(E) *Pittosporum* sp.

(E) *Pittosporum* sp.

(E) *Pittosporum* sp.

(E) *Pittosporum* sp.

(E) *Pittosporum* sp.

(E) *Pittosporum* sp.

(E) *Pittosporum* sp.

(E) *Pittosporum* sp.

(E) *Pittosporum* sp.

(E) *Pittosporum* sp.

(E) *Pittosporum* sp.

(E) *Pittosporum* sp.

(E) *Pittosporum* sp.

(E) *Pittosporum* sp.

(E) *Pittosporum* sp.

(E) *Pittosporum* sp.

(E) *Pittosporum* sp.

(E) *Pittosporum* sp.

(E) *Pittosporum* sp.

(E) *Pittosporum* sp.

(E) *Pittosporum* sp.

(E) *Pittosporum* sp.

(E) *Pittosporum* sp.

(E) *Pittosporum* sp.

(E) *Pittosporum* sp.

(E) *Pittosporum* sp.

(E) *Pittosporum* sp.

(E) *Pittosporum* sp.

(E) *Pittosporum* sp.

(E) *Pittosporum* sp.

**Preliminary Irrigation Notes Continued:**

Under canopies of existing trees, excavate irrigation trenches by hand.

Irrigation controller used will be a smart irrigation controller with wireless weather sensor that will automatically adjust the duration of valve run times based on current weather conditions.



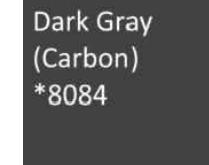
New wood split rail fence. 30" high max. to top rail, 36" high max. to top of posts.



New native sandstone planter wall, 20" high max, with 30" max. high boulders set into wall.



New colored concrete sidewalks.



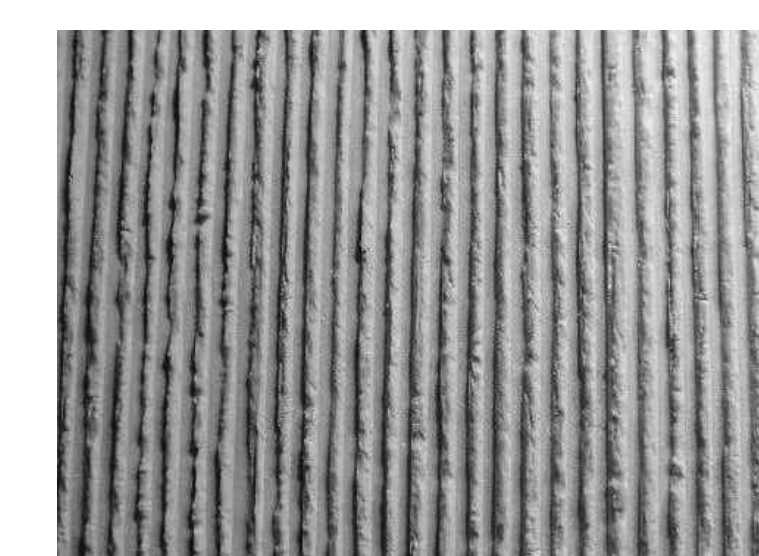
New colored and textured concrete driving surface with 30"x30" scorelines.



New native sandstone grouted cobble paving.

New native sandstone boulders set into ground. 30" high max.

New evergreen perennial such as: *Chondropetalum tectorum* / Cape Rush



"Fractured fin" natural grey concrete finish

Retaining wall with "fractured fin" natural grey concrete finish with anti-graffiti coating on face of wall per Caltrans standards, with painted tube steel rail on top of wall per Caltrans standards.

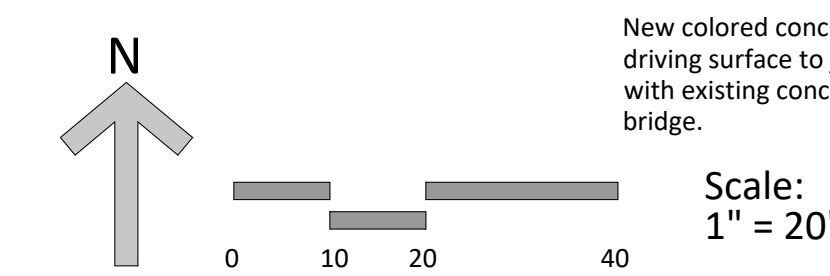
New catch basin, typ. See Civil Engineer's drawings for more information.

New wood split rail fence. 30" high max to top rail, 36" high max. to top of posts.

2' to 3' high earth berm at middle island planter. Approximately 6:1 slope.

New steel guardrail to join with existing steel guardrail.

New colored concrete driving surface to join with existing concrete bridge.



Scale: 1" = 20'

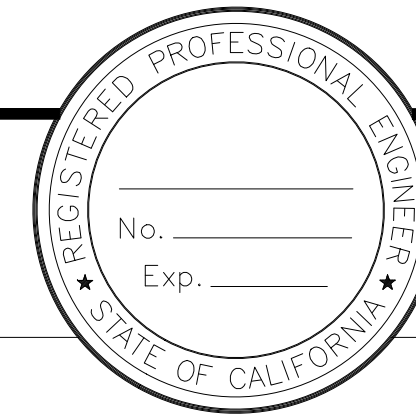
**ERIN O CARROLL**  
REGISTERED LANDSCAPE ARCHITECT  
No. 5221  
EXP. 09/30/20  
STATE OF CALIFORNIA

**PRELIMINARY NOT FOR CONSTRUCTION**

erin o carroll landscape architect  
105 West De La Guerra Street Unit J  
Santa Barbara, CA 93101  
805.364.5075 www.erinocarroll.com

Date/ Issue Sheet No. Sheet Title  
2020.02.03 **L1.1 PRELIMINARY LANDSCAPE PLAN**

CONSTRUCTION STARTED:	PROJECT ENGINEER:
CONSTRUCTION COMPLETED:	DATE
RECORD DRAWING APPROVED BY:	



**COUNTY OF SANTA BARBARA**  
**DEPARTMENT OF PUBLIC WORKS**  
TRANSPORTATION DIVISION

DESIGN BY: EC  
DRAWN BY: EC, MG  
CHECKED BY: EC  
CONSTRUCTABILITY REVIEW BY:

SCALE: AS SHOWN  
PROJECT NO.

**SAN YSIDRO ROAD AT 101 FREEWAY ROUNDABOUT**

SHEET NO. 1 OF 2  
FILE NO.

FOR REDUCED PLANS ORIGINAL SCALE IN INCHES

DISREGARD PRINTS BEARING EARLIER REVISION DATES

REVISION DATES (PRELIMINARY STAGE ONLY)

**Non-Native Mitigation Trees:**

(To be planted along North Jameson Road between Olive Mill Road and Sheffield Drive for the loss of non-native trees associated with both Olive Mill and San Ysidro Traffic Circle projects):

Botanical Name	Common Name	Size	Water Use	Notes
Arbutus unedo	Strawberry tree	15 Gal or 24" Box	Low	Standard Form Arbutus 'Marina' is on County Approved street tree list.
Arctostaphylos species	Manzanita	15 Gal or 24" Box	Very Low	California Native Tree Natural Form (3 tree types would be glauca, Dr. Hurd, and St. Helena)
Cercis occidentalis	Western Redbud	15 Gal or 24" Box	Low	California Native Tree Standard Form
Lagerstroemia X fauriei	Crape Myrtle	15 Gal or 24" Box	Moderate	Standard Form. On County Approved street tree list.
Heteromeles arbutifolia	Toyon	15 Gal or 24" Box	Very Low	California Native Tree Natural Form
Metrosideros collina 'Springfire'	'ohi'a lehua	15 Gal or 24" Box	Moderate	Multi-trunk Metrosideros excelsa is on County Approved street tree list.
Rhus lancea	African Sumac	15 Gal or 24" Box	Low	Standard Form. On County Approved street tree list.
Tristanopsis laurina	Water Gum	15 Gal or 24" Box	Moderate	Standard Form. On County Approved street tree list.

**Preliminary Plant List:**

Botanical Name	Common Name	Size	Water Use	Notes
<b>Trees:</b>				
Quercus agrifolia	Coast Live Oak	48", 60" Box	Very Low	California Native Tree Multi-trunk form
Platanus racemosa	California Sycamore	36", 48" Box	Moderate	California Native Tree Multi-trunk form
Washingtonia robusta	Mexican Fan Palm	12' Trunk height	Low	California Native Tree Note: Coordinate installation/selection of this tree with Caltrans.
<b>Shrubs, Grasses, Succulents and Perennials:</b>				
Agave attenuata	Blue Foxtail Agave	15 Gal	Low	
Arctostaphylos 'Howard McMinn'	Howard McMinn Manzanita	15 Gal	Low	California Native Plant
Arctostaphylos 'Sunset'	Sunset Manzanita	15 Gal	Low	California Native Plant
Chondropetalum tectorum	Cape Rush	15 Gal	Low	
Dianella revoluta 'Baby Bliss'	Baby Bliss Flax Lily	5 Gal	Low	
Fremontodendron 'Ken Taylor'	Flannel Bush	15 Gal	Very Low	California Native Plant
Lomandra longifolia 'Steely Slim'	Steely Slim Mat Rush	5 Gal	Low	
Lygeum spartum	Esparto Grass	5 Gal	Low	
Juncus patens	California Rush	1 Gal	Low	California Native Plant
Malosma laurina	Laurel Sumac	15 Gal	Very Low	California Native Plant
Pittosporum crassifolium 'Compactum'	Dwarf Karo	15 Gal	Moderate	
Prunus ilicifolia ssp Lyonii	Catalina Cherry	15 Gal	Low	California Native Plant
Romneya coulteri	Matilija poppy	5 Gal	Very Low	California Native Plant
Rhus integrifolia (or Rhus ovata)	Lemonadeberry	15 Gal	Very Low	California Native Plant
Westringia 'Grey Box'	Compact Coast Rosemary	15 Gal	Low	
Venegasia carpesioides	Canyon Sunflower	5 Gal	Low	California Native Plant

Botanical Name	Common Name	Size	Water Use	Notes
<b>Groundcovers and Low Plantings:</b>				
Carex progregialis (or Carex divulsula)	California Meadow Sedge	1 Gal	Low	California Native Plant Plant @ 12" on center
Carex glauca	Blue Sedge	1 Gal	Low	Plant @ 18" on center
Carissa 'Green Carpet'	Prostate Natal Plum	5 Gal	Low	Plant @ 24" on center
Limonium perezii	Sea Lavender	1 Gal	Low	Plant @ 12" on center
Lippia nodiflora	Kurapia	Sod	Low	Plant @ 12" on center
Myoporum 'Putah Creek'	Creeping Myoporum	1 Gal	Low	Plant @ 24" on center Coordinate installation/selection of this plant with Caltrans.
Tulbaghia violacea	Society Garlic	1 Gal	Low	Plant @ 12" on center
Note: mulch used at groundcovers shall be 3" deep organic compost (instead of bark mulch) to promote groundcover establishment.				
<b>Vines:</b>				
Lonicera subspicata var. subspicata	Santa Barbara Honeysuckle	15 Gal	Low	California Native Plant Plant @ 8" on center on chainlink fence.
Vitis 'Rodgers Red'	Rodgers Red California Grape	15 Gal	Low	California Native Plant Plant @ 8" on center on chainlink fence.

Maintenance Note:  
Landscape installer will maintain all existing and proposed landscaping (2) times per month within the limit of work for a period not less than (3) years after date of final completion of project. Landscape installer will replace all dead or unhealthy plants during the (3) year maintenance period.

**Plant Images:**



Quercus agrifolia / Coast Live Oak      Platanus racemosa / California Sycamore      Washingtonia robusta / Mexican Fan Palm



Agave attenuata / Foxtail Agave      Arctostaphylos 'Howard McMinn' / Howard McMinn Manzanita      Arctostaphylos 'Sunset' / Sunset Manzanita      Carex progregialis / California Meadow Sedge      Carex glauca / Blue Sedge      Carissa 'Green Carpet' / Prostate Natal Plum      Chondropetalum tectorum / Cape Rush      Dianella r. 'Baby Bliss' / Baby Bliss Flax Lily



Fremontodendron 'Ken Taylor' / Flannel Bush      Juncus patens / California Rush      Limonium perezii / Sea Lavender      Lomandra l. 'Steely Slim' / Steely Slim Mat Rush      Loniceria subspicata var. subspicata / Santa Barbara Honeysuckle      Lippia nodiflora / Kurapia      Lygeum spartum / Esparto Grass      Malosma laurina / Laurel Sumac



Pittosporum crassifolium 'Compactum' / Dwarf Karo      Prunus ilicifolia ssp Lyonii / Catalina Cherry      Romneya coulteri / Matilija poppy      Rhus integrifolia / Lemonadeberry      Tulbaghia violacea / Society Garlic      Westringia 'Grey Box' / Compact Coast Rosemary      Venegasia carpesioides / Canyon Sunflower      Vitis 'Rodgers Red' / Rodgers Red California Grape

**PRELIMINARY NOT FOR CONSTRUCTION**

erin o'carroll  
landscape architect  
100 West De La Guerra Street Unit J  
Santa Barbara, CA 93101  
805.364.5075 www.erinocarroll.com

Date / Issue    Sheet No.    Sheet Title  
2020.01.02    L1.2    PRELIMINARY PLANT LIST AND PLANT IMAGES

THIS IS A COPYRIGHTED DOCUMENT AND MAY NOT BE REPRODUCED IN PART OR WHOLE WITHOUT WRITTEN PERMISSION OF ERIN O'CARROLL, LANDSCAPE ARCHITECT COPYRIGHT © 2013

CONSTRUCTION STARTED:	PROJECT ENGINEER:		DESIGN BY: EC	CHECKED BY: EC	SCALE: AS SHOWN	PROJECT NO.	SAN YSIDRO ROAD AT 101 FREEWAY ROUNDABOUT	SHEET NO. 2 OF 2
CONSTRUCTION COMPLETED:	DATE		DRAWN BY: EC, MC	CONSTRUCTABILITY REVIEW BY:	REVISION DATES (PRELIMINARY STAGE ONLY)	FILE NO.		
RECORD DRAWING APPROVED BY:								

FOR REDUCED PLANS ORIGINAL SCALE IN INCHES      0      1      2      3

DISREGARD PRINTS BEARING EARLIER REVISION DATES