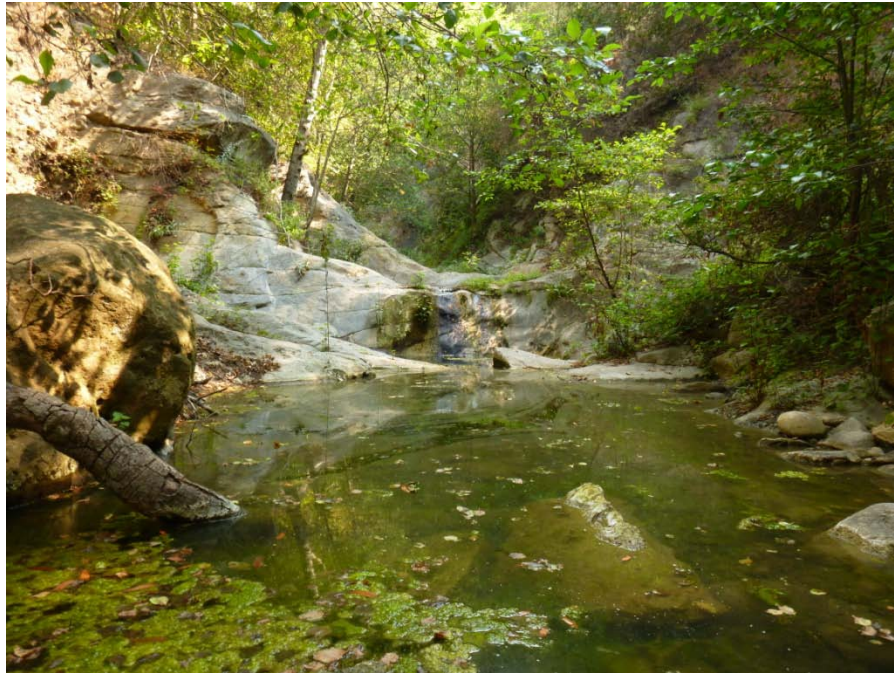


# Circle G Ranch: Fish Passage Restoration Project Carpinteria Creek Watershed



April 14, 2015

Mauricio Gomez, Director

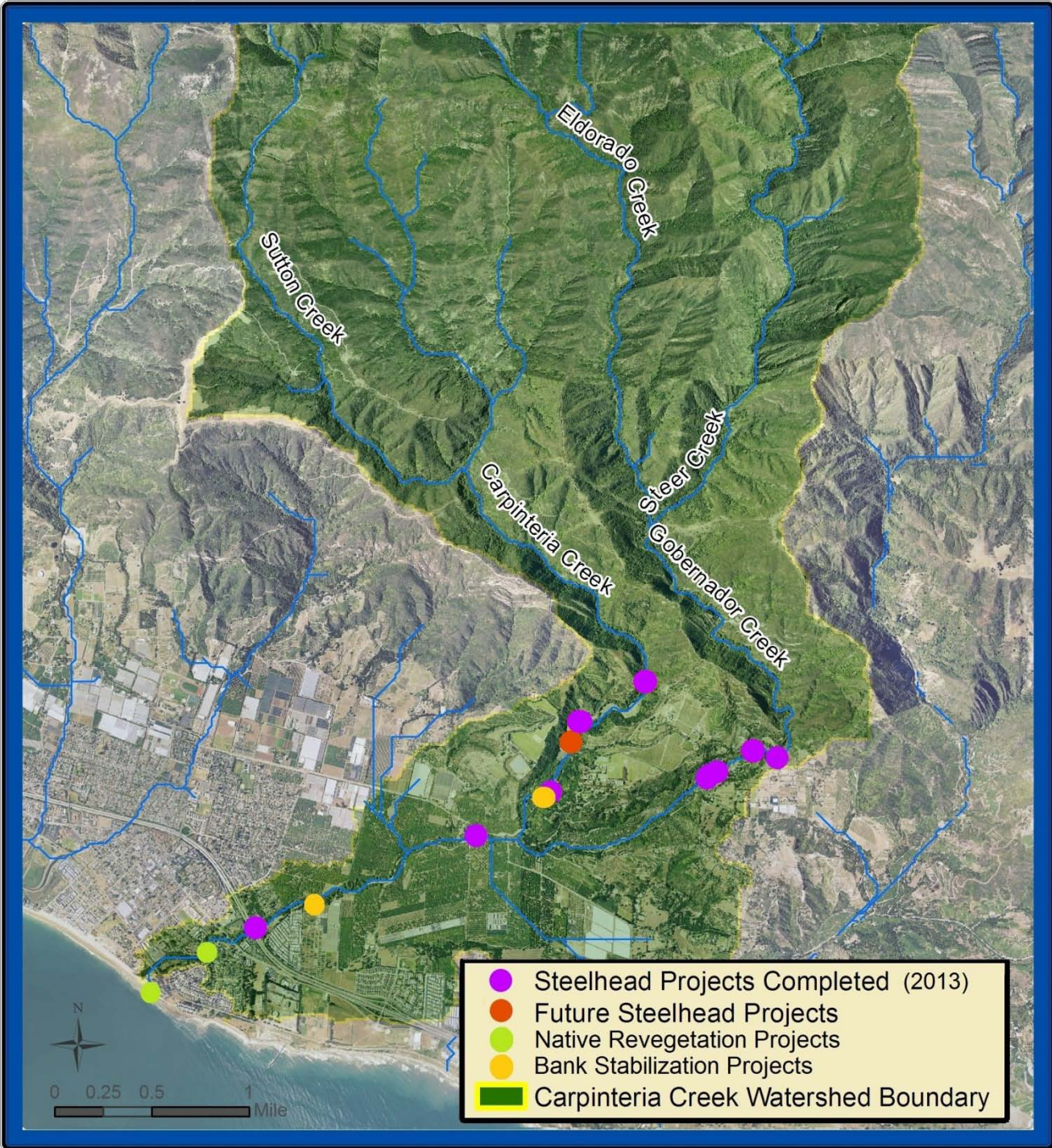
South Coast Habitat Restoration

Santa Barbara County Board of Supervisors

Coastal Resources Enhancement Fund Hearing

# Carpinteria Creek Watershed

- Located within 1<sup>st</sup> District
- Rated as a Core 1 Watershed by NOAA Fisheries Steelhead Recovery Plan (2012)
- Ongoing Restoration Work
  - Non-native plant (*Arundo donax*) removal effort
  - Creek Mouth within State Parks
  - Nine barriers have been removed or modified
  - Two County Debris Basins removed/modified



# Project

- Removal of the existing undersized bridge and 98 feet of concreted stream bed.
- The current crossing is rated as an impassible barrier for migrating southern California steelhead, a federally endangered species.
- Carpinteria Creek has been a focus of recovery efforts over the last several years and this is the last major barrier along Carpinteria Creek.
- Its removal and subsequent restoration will once again allow migrating steelhead trout to access the perennial headwaters of the creek.





# Partnership

- Landowner
- United States Fish and Wildlife Service
- California Department of Fish and Wildlife
- California Fish Passage Forum
- South Coast Habitat Restoration
- Carpinteria Creek Watershed Coalition



# Thank you!



April 14, 2015

Mauricio Gomez, Director  
South Coast Habitat Restoration  
SB County Board of Directors  
CREF Hearing