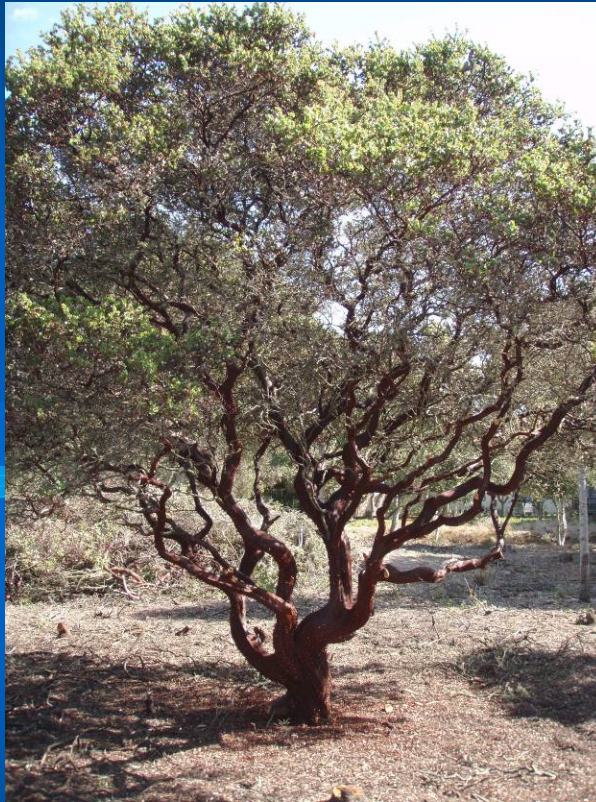


Burton Mesa Vegetation Reduction Project



Santa Barbara County Fire Department
Vegetation Management Section

John Scherrei, Fire Chief

Burton Mesa Vegetation Reduction Project

Developed Partnership with Department of Fish & Game

- Completed Final Burton Mesa Reserve Plan and EIR

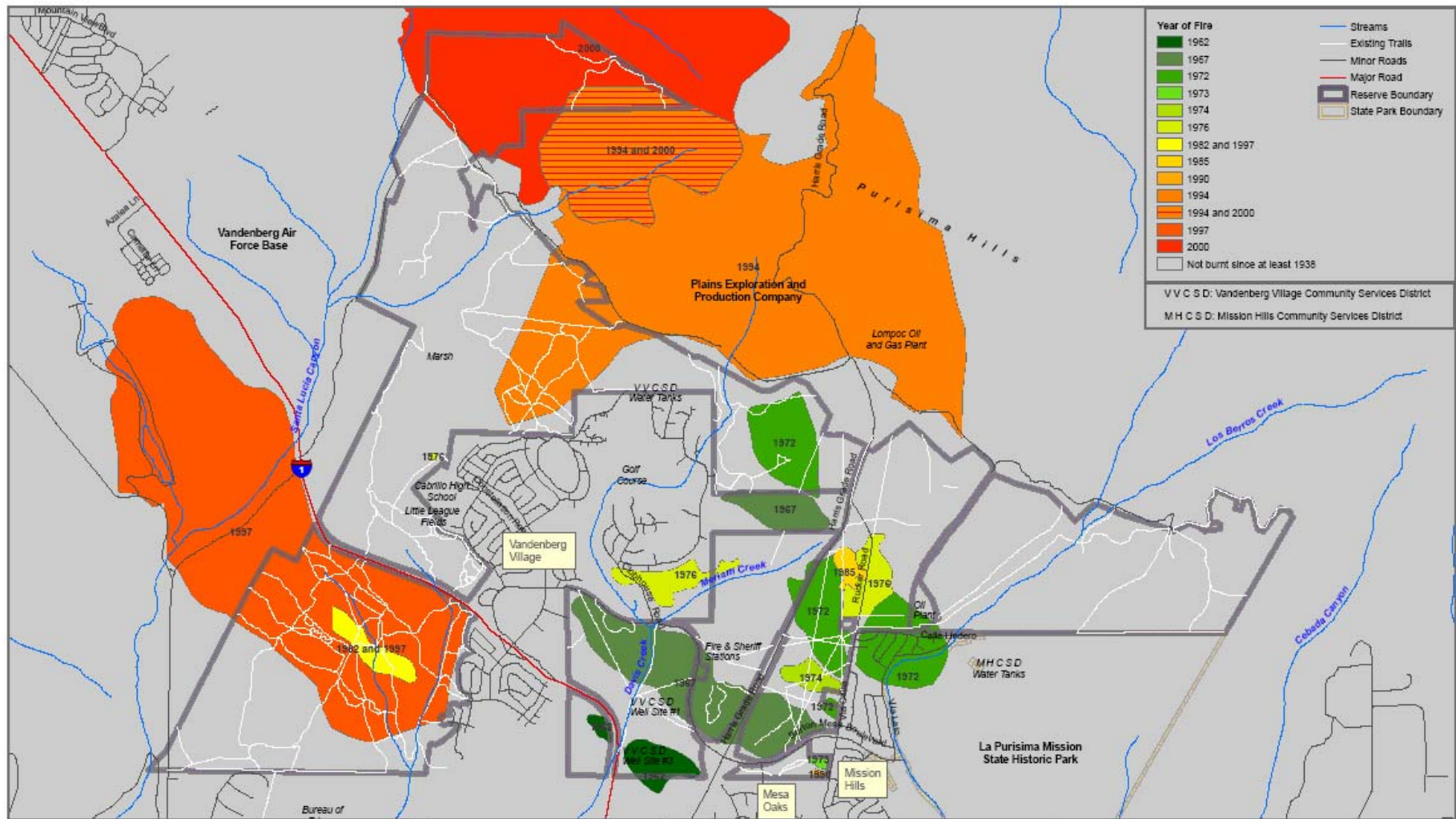
Phase 1 of the Project Complete

- 2.4 miles of Modified Fuel Break
- Notification letters sent to homeowners
- 130 Burn piles
- Developed Fuels Reduction Projects with Homeowner Associations

Phase 2


- Continue Modified Fuel Break in September 2008
 - Monitored by DFG





Data Sources:
 Fire Perimeters: CA Dept of Forestry and Fire Protection & USDA Forest Service; Davis et al. (1988)
 Roads: Santa Barbara County (date unknown)
 Trails: Condor Environmental Planning Services (2005)
 Streams: Teale GIS Solutions Group (1997)
 Reserve Boundary: Santa Barbara County (2005)
 State Park Boundary: California Department of Parks and Recreation, Channel Coast Div. (2004)

0 0.5 1 Miles
 0 0.3 0.6 Kilometers

Prepared by:
 **CONDOR ENVIRONMENTAL PLANNING SERVICES, INC.**

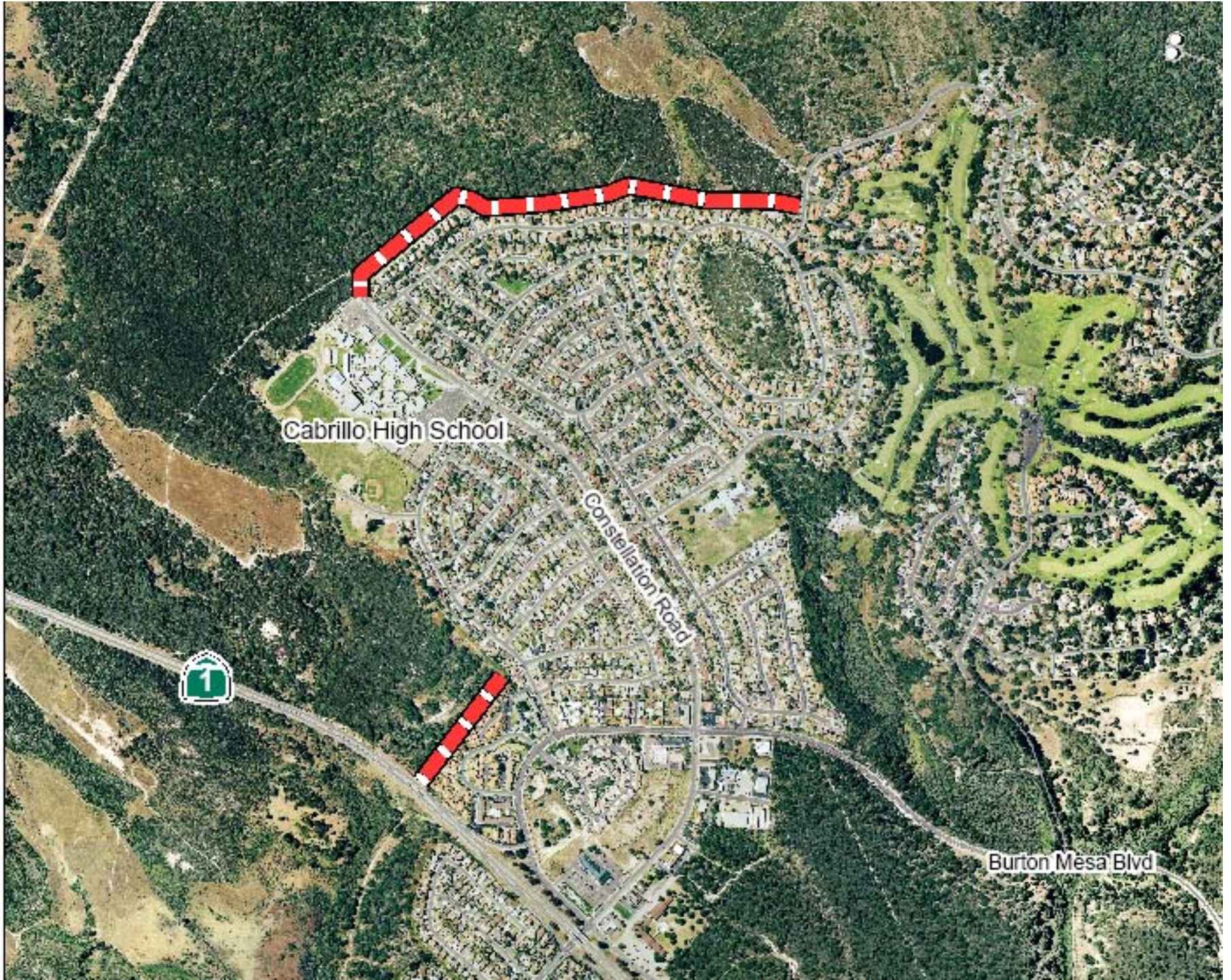


Prepared for:
Burton Mesa Ecological Reserve
Land Management Plan
 Date: July 2005

**Figure 17:
 Fire History**

Burton Mesa Vegetation Reduction Project

Santa Barbara County Fire Department



Burton Mesa Vegetation Reduction Project

Santa Barbara County Fire Department



