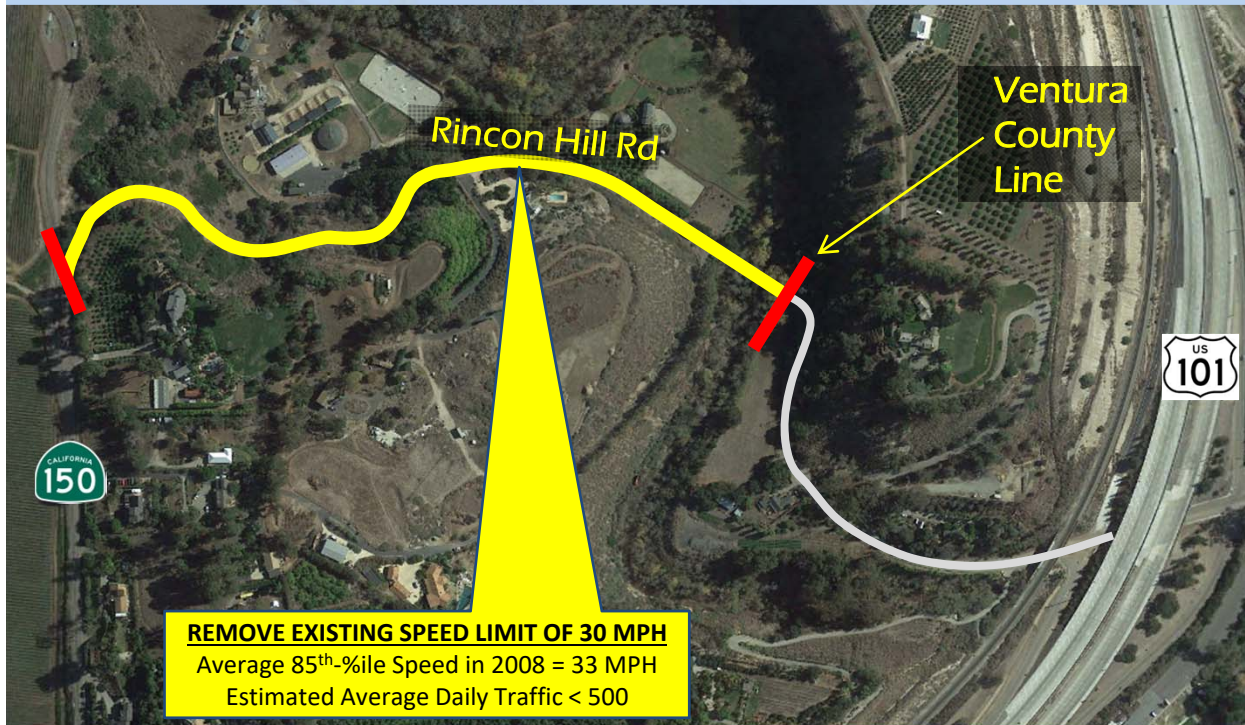


PROPOSED SPEED LIMITS

Rincon Hill Road

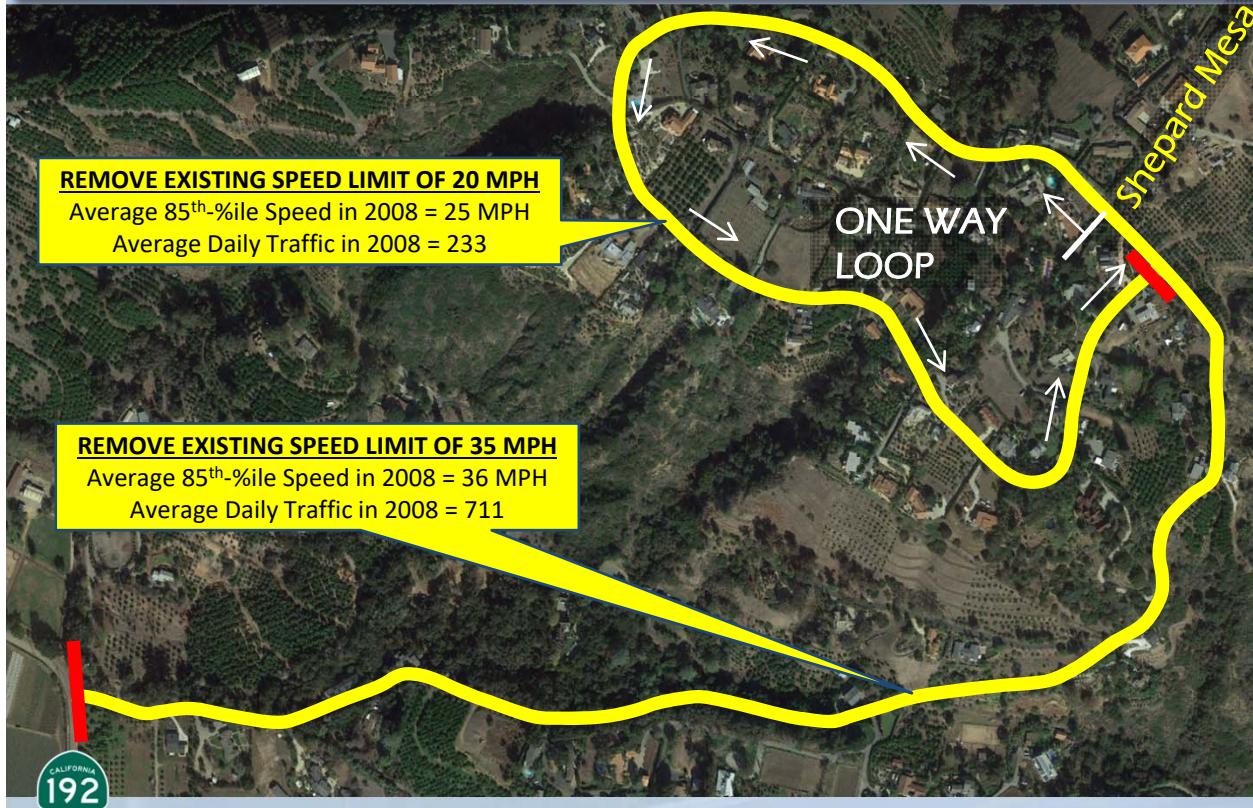
from State Route 150 to Ventura County Line



PROPOSED SPEED LIMITS

Shepard Mesa Road

from State Route 192 through on way loop



REMOVE EXISTING SPEED LIMIT OF 20 MPH

Average 85th-%ile Speed in 2008 = 25 MPH

Average Daily Traffic in 2008 = 233

REMOVE EXISTING SPEED LIMIT OF 35 MPH

Average 85th-%ile Speed in 2008 = 36 MPH

Average Daily Traffic in 2008 = 711

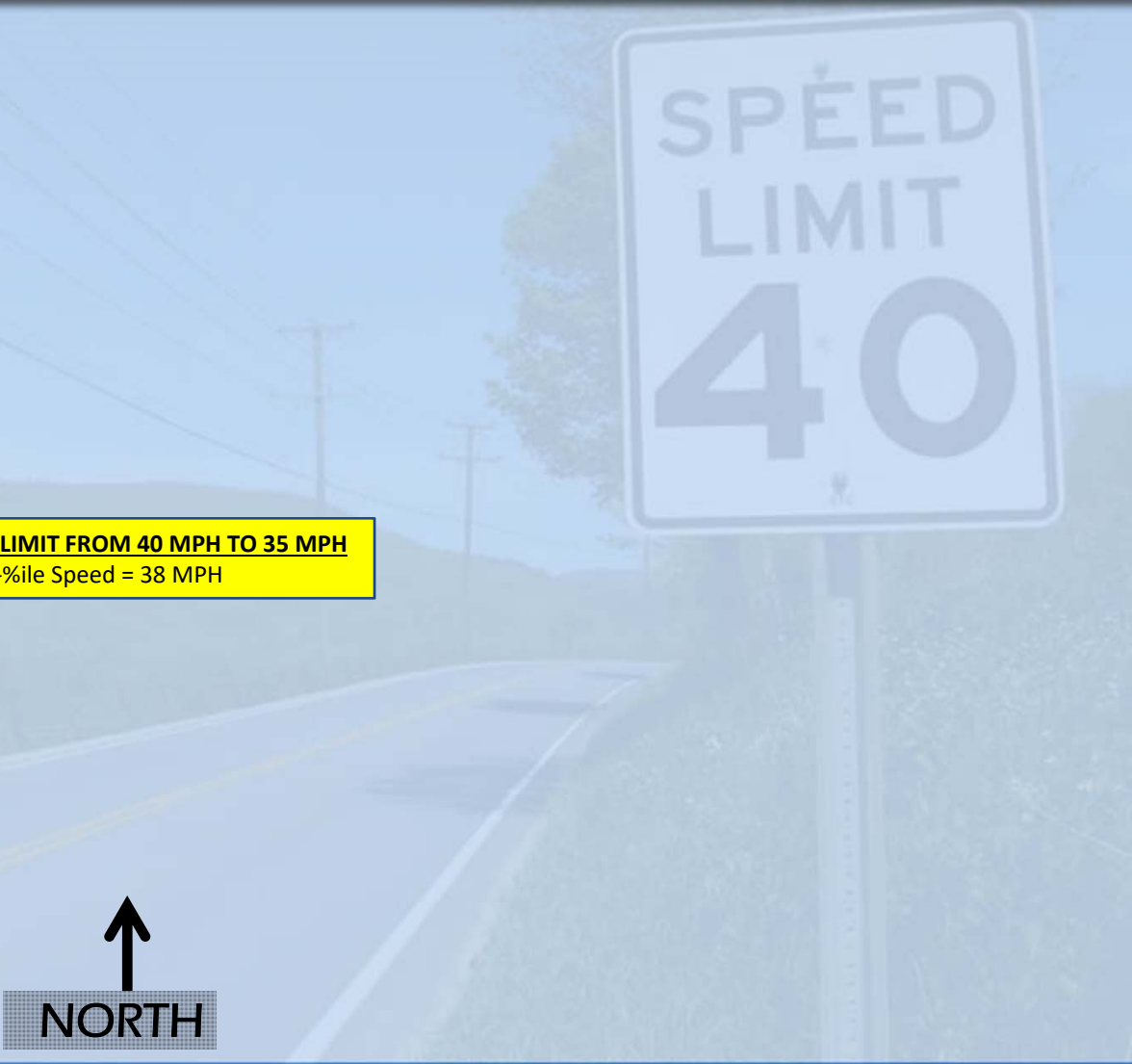


PROPOSED SPEED LIMITS

Puente Drive
from Hollister Av. to More Mesa Dr.



LOWER EXISTING SPEED LIMIT FROM 40 MPH TO 35 MPH
Average 85th-%ile Speed = 38 MPH



PROPOSED SPEED LIMITS

Puente Drive / Vieja Drive
from More Mesa Dr. to South End



LOWER EXISTING SPEED LIMIT FROM 40 MPH TO 35 MPH
Average 85th-%ile Speed = 39 MPH



PROPOSED SPEED LIMITS

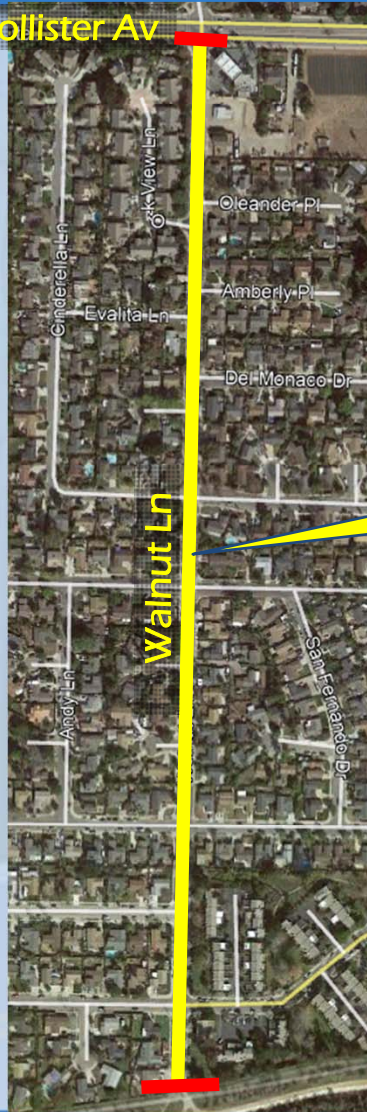


Walnut Lane

from Hollister Av to South End



Hollister Av



RAISE EXISTING SPEED LIMIT FROM 25 MPH TO 30 MPH

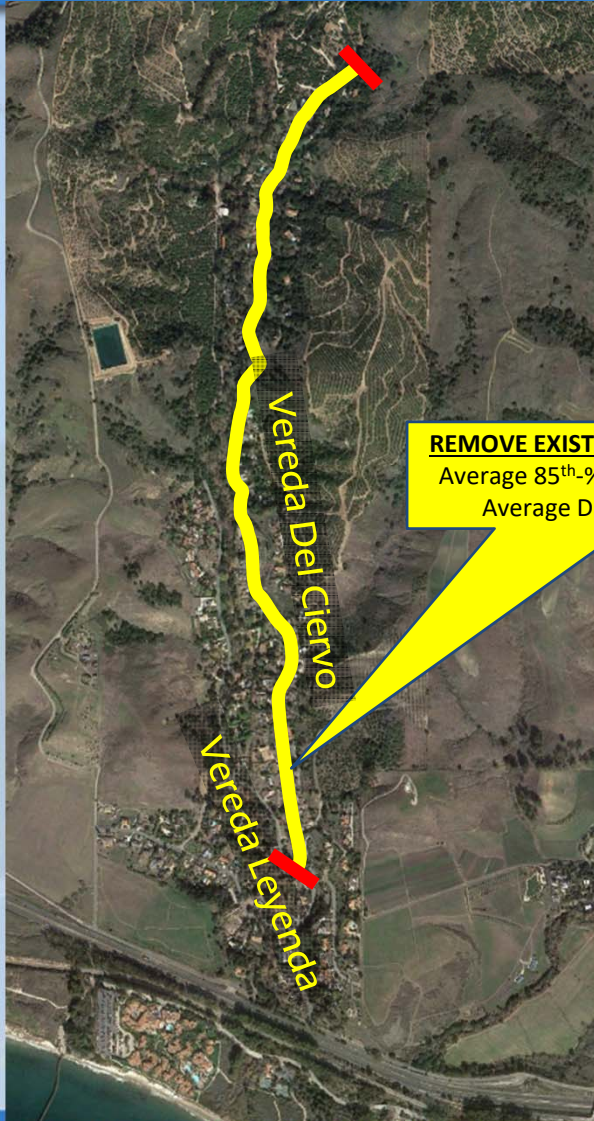
Average 85th-%ile Speed = 37 MPH



PROPOSED SPEED LIMITS

Vereda Del Ciervo

from Vereda Leyenda to North End



REMOVE EXISTING SPEED LIMIT OF 35 MPH
Average 85th-%ile Speed in 2002 = 39 MPH
Average Daily Traffic in 2007 = 654



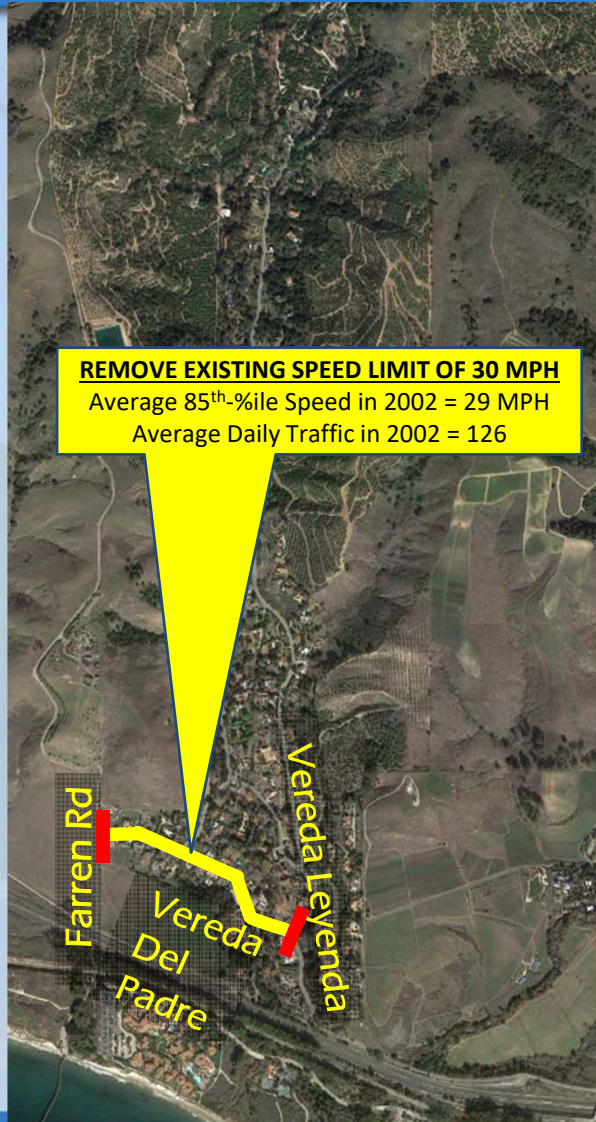
PUBLIC WORKS DEPARTMENT

TRANSPORTATION DIVISION

PROPOSED SPEED LIMITS

Vereda Del Padre

from Farren Rd to Vereda Leyenda



REMOVE EXISTING SPEED LIMIT OF 30 MPH

Average 85th-%ile Speed in 2002 = 29 MPH

Average Daily Traffic in 2002 = 126



PUBLIC WORKS DEPARTMENT

TRANSPORTATION DIVISION

PROPOSED SPEED LIMITS

Vereda Leyenda

from Calle Real to North End



REMOVE EXISTING SPEED LIMIT OF 30 MPH

Average 85th-%ile Speed in 2001 = 33 MPH

Average Daily Traffic in 2007 = 1,391



PUBLIC WORKS DEPARTMENT

TRANSPORTATION DIVISION

PROPOSED SPEED LIMITS

Refugio Road

from State Route 246 to 450' south of Redondo Ct.



KEEP EXISTING SPEED LIMIT OF 35 MPH
Average 85th-ile Speed = 42.5 MPH

Redondo Ct

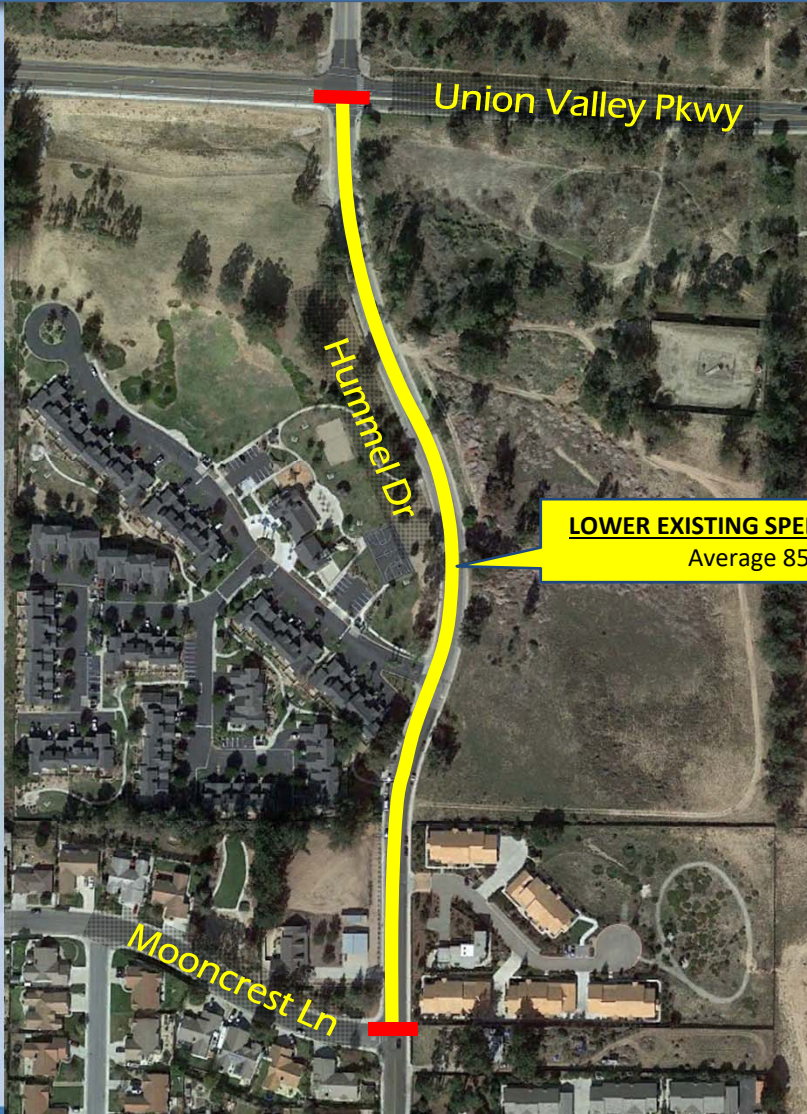
LOWER EXISTING SPEED LIMIT OF 55 MPH TO 35 MPH
Extension of 35 MPH Speed Limit 450' to the South



PROPOSED SPEED LIMITS

Hummel Drive

from Union Valley Pkwy to Mooncrest Ln



LOWER EXISTING SPEED LIMIT FROM 40 MPH TO 35 MPH
Average 85th-%ile Speed = 38.5 MPH

