

**Verizon Wireless • Proposed Base Station (Site No. 115535 “Montecito RELO”)
512 Santa Angela Lane • Montecito, California**

Statement of Hammett & Edison, Inc., Consulting Engineers

The firm of Hammett & Edison, Inc., Consulting Engineers, has been retained on behalf of Verizon Wireless, a personal wireless telecommunications carrier, to evaluate the base station (Site No. 115535 “Montecito RELO”) proposed to be located at 512 Santa Angela Lane in Montecito, California, for compliance with appropriate guidelines limiting human exposure to radio frequency (“RF”) electromagnetic fields.

Executive Summary

Verizon proposes to install directional panel antennas above the roof of the single-story telephone switch building located at 512 Santa Angela Lane in Montecito. The proposed operation will, together with the existing base station at the site, comply with the FCC guidelines limiting public exposure to RF energy.

Prevailing Exposure Standards

The U.S. Congress requires that the Federal Communications Commission (“FCC”) evaluate its actions for possible significant impact on the environment. A summary of the FCC’s exposure limits is shown in Figure 1. These limits apply for continuous exposures and are intended to provide a prudent margin of safety for all persons, regardless of age, gender, size, or health. The most restrictive FCC limit for exposures of unlimited duration to radio frequency energy for several personal wireless services are as follows:

| Wireless Service | Frequency Band | Occupational Limit | Public Limit |
|------------------------------------|------------------|-------------------------|-------------------------|
| Microwave (Point-to-Point) | 5,000–80,000 MHz | 5.00 mW/cm ² | 1.00 mW/cm ² |
| BRS (Broadband Radio) | 2,600 | 5.00 | 1.00 |
| AWS (Advanced Wireless) | 2,100 | 5.00 | 1.00 |
| PCS (Personal Communication) | 1,950 | 5.00 | 1.00 |
| Cellular | 870 | 2.90 | 0.58 |
| SMR (Specialized Mobile Radio) | 855 | 2.85 | 0.57 |
| 700 MHz | 700 | 2.40 | 0.48 |
| [most restrictive frequency range] | 30–300 | 1.00 | 0.20 |

General Facility Requirements

Base stations typically consist of two distinct parts: the electronic transceivers (also called “radios” or “channels”) that are connected to the traditional wired telephone lines, and the passive antennas that send the wireless signals created by the radios out to be received by individual subscriber units. The transceivers are often located at ground level and are connected to the antennas by coaxial cables. A small antenna for reception of GPS signals is also required, mounted with a clear view of the sky.



**Verizon Wireless • Proposed Base Station (Site No. 115535 “Montecito RELO”)
512 Santa Angela Lane • Montecito, California**

Because of the short wavelength of the frequencies assigned by the FCC for wireless services, the antennas require line-of-sight paths for their signals to propagate well and so are installed at some height above ground. The antennas are designed to concentrate their energy toward the horizon, with very little energy wasted toward the sky or the ground. Along with the low power of such facilities, this means that it is generally not possible for exposure conditions to approach the maximum permissible exposure limits without being physically very near the antennas.

Computer Modeling Method

The FCC provides direction for determining compliance in its Office of Engineering and Technology Bulletin No. 65, “Evaluating Compliance with FCC-Specified Guidelines for Human Exposure to Radio Frequency Radiation,” dated August 1997. Figure 2 attached describes the calculation methodologies, reflecting the facts that a directional antenna’s radiation pattern is not fully formed at locations very close by (the “near-field” effect) and that at greater distances the power level from an energy source decreases with the square of the distance from it (the “inverse square law”). The conservative nature of this method for evaluating exposure conditions has been verified by numerous field tests.

Site and Facility Description

The site at 512 Santa Angela Lane in Montecito was visited by Mr. Kent A. Swisher, a qualified engineer employed by Hammett & Edison, Inc., during normal business hours on March 9, 2012. There were observed antennas for use by T-Mobile installed on the single-story Verizon switch building. The maximum power density level observed for a person at ground near the site was 0.0048 mW/cm², which is 2.4% of the most restrictive public limit, for the combined operation of the existing RF services at the site as installed and operating at that time. The location of this and other representative measured levels are shown in Figure 3. The measurement equipment used was a Wandel & Goltermann Type EMR-300 Radiation Meter with Type 18 Isotropic Electric Field Probe (Serial No. F-0034). The meter and probe were under current calibration by the manufacturer.

Based upon information provided by Verizon, including zoning drawings by SAC Wireless, dated February 20, 2012, it is proposed to install nine Andrew directional panel antennas – three Model HBXX-6516DS-VTM and six Model LNX-6513DS-VTM – behind the existing screen wall above the roof of the building. The antennas would be mounted with no downtilt at an effective height of about 21 feet above ground, 4 feet above the roof, and would be oriented in identical groups of three toward 120°T, 220°T, and 310°T, away from the building. The maximum effective radiated power in any direction would be 4,910 watts, representing simultaneous operation at 1,900 watts for PCS, 2,520 watts for cellular, and 490 watts for 700 MHz service.



**Verizon Wireless • Proposed Base Station (Site No. 115535 “Montecito RELO”)
512 Santa Angela Lane • Montecito, California**

Study Results

For a person anywhere at ground, the maximum RF exposure level due to the proposed Verizon operation by itself is calculated to be 0.051 mW/cm², which is 9.0% of the applicable public exposure limit. The maximum calculated cumulative level at ground, for the simultaneous operation of both carriers, is projected to be 9.5% of the public exposure limit, since the maximum levels from the two carriers’ operations do not coincide. The location of this and other representative calculated cumulative exposure levels are shown in Figure 3. It should be noted that these results include several “worst-case” assumptions and therefore are expected to overstate actual power density levels. Levels may exceed the applicable public exposure limit on the roof of the subject building, near the antennas.

Recommended Mitigation Measures

Due to their mounting locations, the Verizon antennas would not be accessible to the general public, and so no mitigation measures are necessary to comply with the FCC public exposure guidelines. To prevent occupational exposures in excess of the FCC guidelines, no access within 14 feet directly in front of the antennas themselves, such as might occur during maintenance work on the roof or screen wall, should be allowed while the base station is in operation, unless other measures can be demonstrated to ensure that occupational protection requirements are met. Posting explanatory warning signs* at the roof access hatch and on the screens in front of the antennas, such that the signs would be readily visible from any angle of approach to persons who might need to work within that distance, would be sufficient to meet FCC-adopted guidelines. Similar measures should already be in place for the other carrier at the site; the applicable keep-back distance for that carrier has not been determined as part of this study.

Conclusion

Based on the information and analysis above, it is the undersigned’s professional opinion that operation of the base station proposed by Verizon Wireless at 512 Santa Angela Lane in Montecito, California, will comply with the prevailing standards for limiting public exposure to radio frequency energy and, therefore, will not for this reason cause a significant impact on the environment. The highest calculated level in publicly accessible areas is much less than the prevailing standards allow for exposures of unlimited duration. This finding is consistent with measurements of actual exposure conditions taken at other operating base stations. Posting explanatory signs is recommended to establish compliance with occupational exposure limitations.

* Warning signs should comply with OET-65 color, symbol, and content recommendations. Contact information should be provided (e.g., a telephone number) to arrange for access to restricted areas. The selection of language(s) is not an engineering matter, and guidance from the landlord, local zoning or health authority, or appropriate professionals may be required.

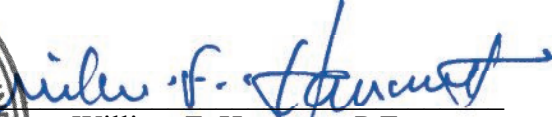


**Verizon Wireless • Proposed Base Station (Site No. 115535 “Montecito RELO”)
512 Santa Angela Lane • Montecito, California**

Authorship

The undersigned author of this statement is a qualified Professional Engineer, holding California Registration Nos. E-13026 and M-20676, which expire on June 30, 2013. This work has been carried out under his direction, and all statements are true and correct of his own knowledge except, where noted, when data has been supplied by others, which data he believes to be correct.





William F. Hammett, P.E.
707/996-5200

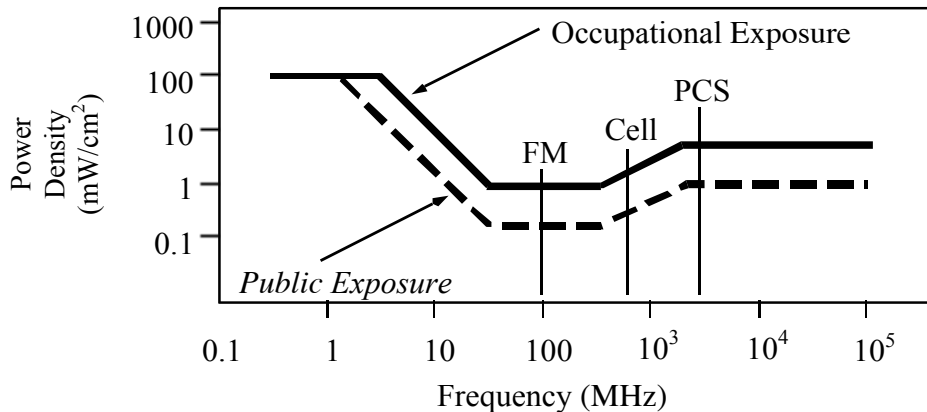
May 2, 2012

FCC Radio Frequency Protection Guide

The U.S. Congress required (1996 Telecom Act) the Federal Communications Commission (“FCC”) to adopt a nationwide human exposure standard to ensure that its licensees do not, cumulatively, have a significant impact on the environment. The FCC adopted the limits from Report No. 86, “Biological Effects and Exposure Criteria for Radiofrequency Electromagnetic Fields,” published in 1986 by the Congressionally chartered National Council on Radiation Protection and Measurements (“NCRP”). Separate limits apply for occupational and public exposure conditions, with the latter limits generally five times more restrictive. The more recent standard, developed by the Institute of Electrical and Electronics Engineers and approved as American National Standard ANSI/IEEE C95.1-2006, “Safety Levels with Respect to Human Exposure to Radio Frequency Electromagnetic Fields, 3 kHz to 300 GHz,” includes similar limits. These limits apply for continuous exposures from all sources and are intended to provide a prudent margin of safety for all persons, regardless of age, gender, size, or health.

As shown in the table and chart below, separate limits apply for occupational and public exposure conditions, with the latter limits (in *italics* and/or dashed) up to five times more restrictive:

| Frequency Applicable Range (MHz) | Electromagnetic Fields (f is frequency of emission in MHz) | | | | | |
|---|--|----------------|-------------------------------------|---------------|--|--------------------------|
| | Electric Field Strength (V/m) | | Magnetic Field Strength (A/m) | | Equivalent Far-Field Power Density (mW/cm ²) | |
| 0.3 – 1.34 | 614 | <i>614</i> | 1.63 | <i>1.63</i> | 100 | <i>100</i> |
| 1.34 – 3.0 | 614 | <i>823.8/f</i> | 1.63 | <i>2.19/f</i> | 100 | <i>180/f²</i> |
| 3.0 – 30 | 1842/f | <i>823.8/f</i> | 4.89/f | <i>2.19/f</i> | 900/f ² | <i>180/f²</i> |
| 30 – 300 | 61.4 | <i>27.5</i> | 0.163 | <i>0.0729</i> | 1.0 | <i>0.2</i> |
| 300 – 1,500 | 3.54√f | <i>1.59√f</i> | √f/106 | <i>√f/238</i> | f/300 | <i>f/1500</i> |
| 1,500 – 100,000 | 137 | <i>61.4</i> | 0.364 | <i>0.163</i> | 5.0 | <i>1.0</i> |



Higher levels are allowed for short periods of time, such that total exposure levels averaged over six or thirty minutes, for occupational or public settings, respectively, do not exceed the limits, and higher levels also are allowed for exposures to small areas, such that the spatially averaged levels do not exceed the limits. However, neither of these allowances is incorporated in the conservative calculation formulas in the FCC Office of Engineering and Technology Bulletin No. 65 (August 1997) for projecting field levels. Hammett & Edison has built those formulas into a proprietary program that calculates, at each location on an arbitrary rectangular grid, the total expected power density from any number of individual radio sources. The program allows for the description of buildings and uneven terrain, if required to obtain more accurate projections.



RFR.CALC™ Calculation Methodology

Assessment by Calculation of Compliance with FCC Exposure Guidelines

The U.S. Congress required (1996 Telecom Act) the Federal Communications Commission (“FCC”) to adopt a nationwide human exposure standard to ensure that its licensees do not, cumulatively, have a significant impact on the environment. The maximum permissible exposure limits adopted by the FCC (see Figure 1) apply for continuous exposures from all sources and are intended to provide a prudent margin of safety for all persons, regardless of age, gender, size, or health. Higher levels are allowed for short periods of time, such that total exposure levels averaged over six or thirty minutes, for occupational or public settings, respectively, do not exceed the limits.

Near Field.

Prediction methods have been developed for the near field zone of panel (directional) and whip (omnidirectional) antennas, typical at wireless telecommunications base stations, as well as dish (aperture) antennas, typically used for microwave links. The antenna patterns are not fully formed in the near field at these antennas, and the FCC Office of Engineering and Technology Bulletin No. 65 (August 1997) gives suitable formulas for calculating power density within such zones.

For a panel or whip antenna, power density $S = \frac{180}{\theta_{BW}} \times \frac{0.1 \times P_{net}}{\pi \times D \times h}$, in mW/cm²,

and for an aperture antenna, maximum power density $S_{max} = \frac{0.1 \times 16 \times \eta \times P_{net}}{\pi \times h^2}$, in mW/cm²,

- where θ_{BW} = half-power beamwidth of the antenna, in degrees, and
 P_{net} = net power input to the antenna, in watts,
 D = distance from antenna, in meters,
 h = aperture height of the antenna, in meters, and
 η = aperture efficiency (unitless, typically 0.5-0.8).

The factor of 0.1 in the numerators converts to the desired units of power density.

Far Field.

OET-65 gives this formula for calculating power density in the far field of an individual RF source:

power density $S = \frac{2.56 \times 1.64 \times 100 \times RFF^2 \times ERP}{4 \times \pi \times D^2}$, in mW/cm²,

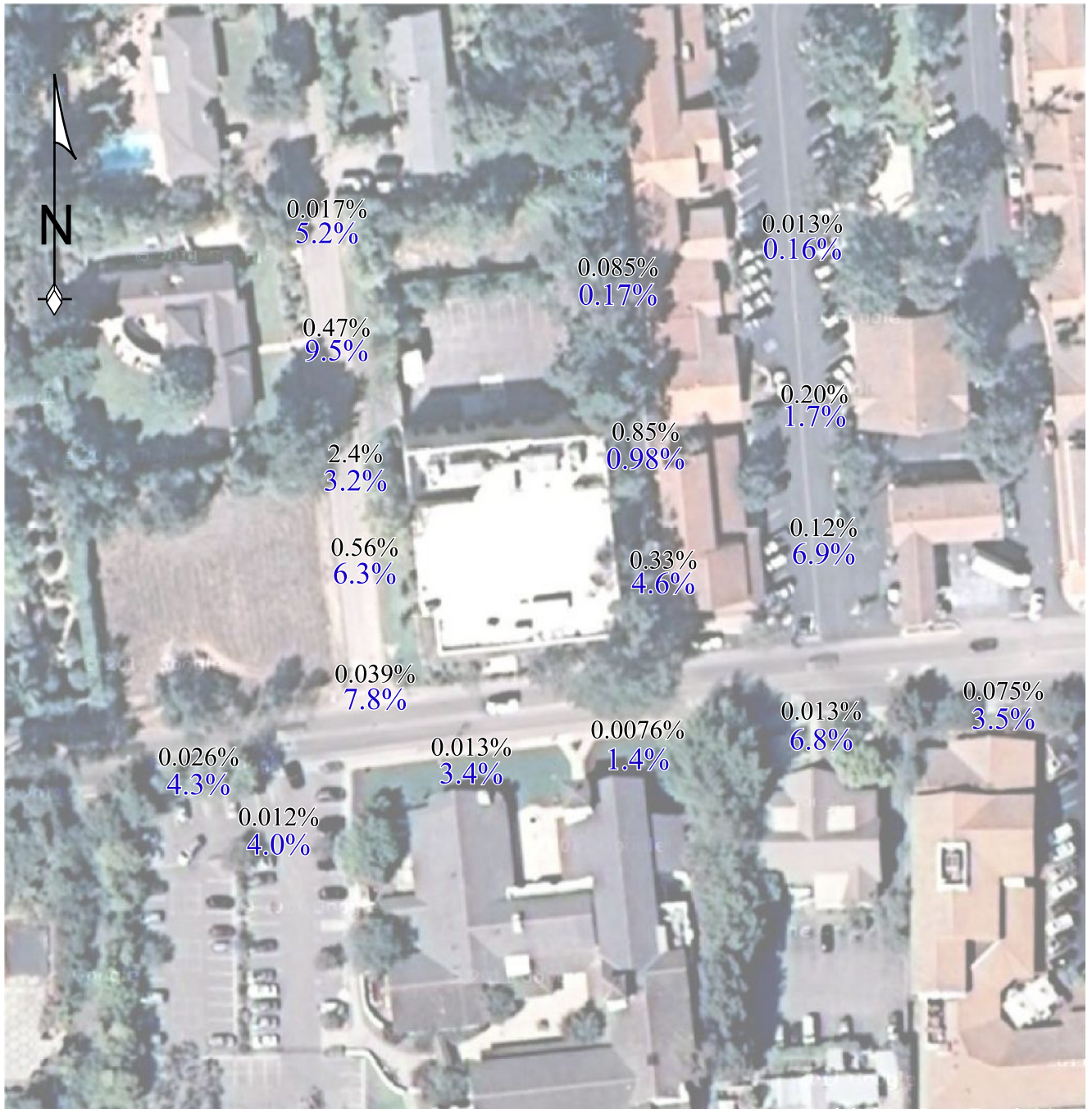
- where ERP = total ERP (all polarizations), in kilowatts,
RFF = relative field factor at the direction to the actual point of calculation, and
D = distance from the center of radiation to the point of calculation, in meters.

The factor of 2.56 accounts for the increase in power density due to ground reflection, assuming a reflection coefficient of 1.6 (1.6 x 1.6 = 2.56). The factor of 1.64 is the gain of a half-wave dipole relative to an isotropic radiator. The factor of 100 in the numerator converts to the desired units of power density. This formula has been built into a proprietary program that calculates, at each location on an arbitrary rectangular grid, the total expected power density from any number of individual radiation sources. The program also allows for the description of uneven terrain in the vicinity, to obtain more accurate projections.



Verizon Wireless • Proposed Base Station (Site No. 115535 “Montecito RELO”)
512 Santa Angela Lane • Montecito, California

Representative Ambient Measurements
and Calculated Exposure Levels



Aerial photo from Google Maps

RF exposure levels measured on March 9, 2012, (shown in black as percent of most restrictive public limit); maximum was 2.4%. Calculated cumulative levels including the existing T-Mobile operations shown in blue; maximum is 9.5% of public limit (see text for details).