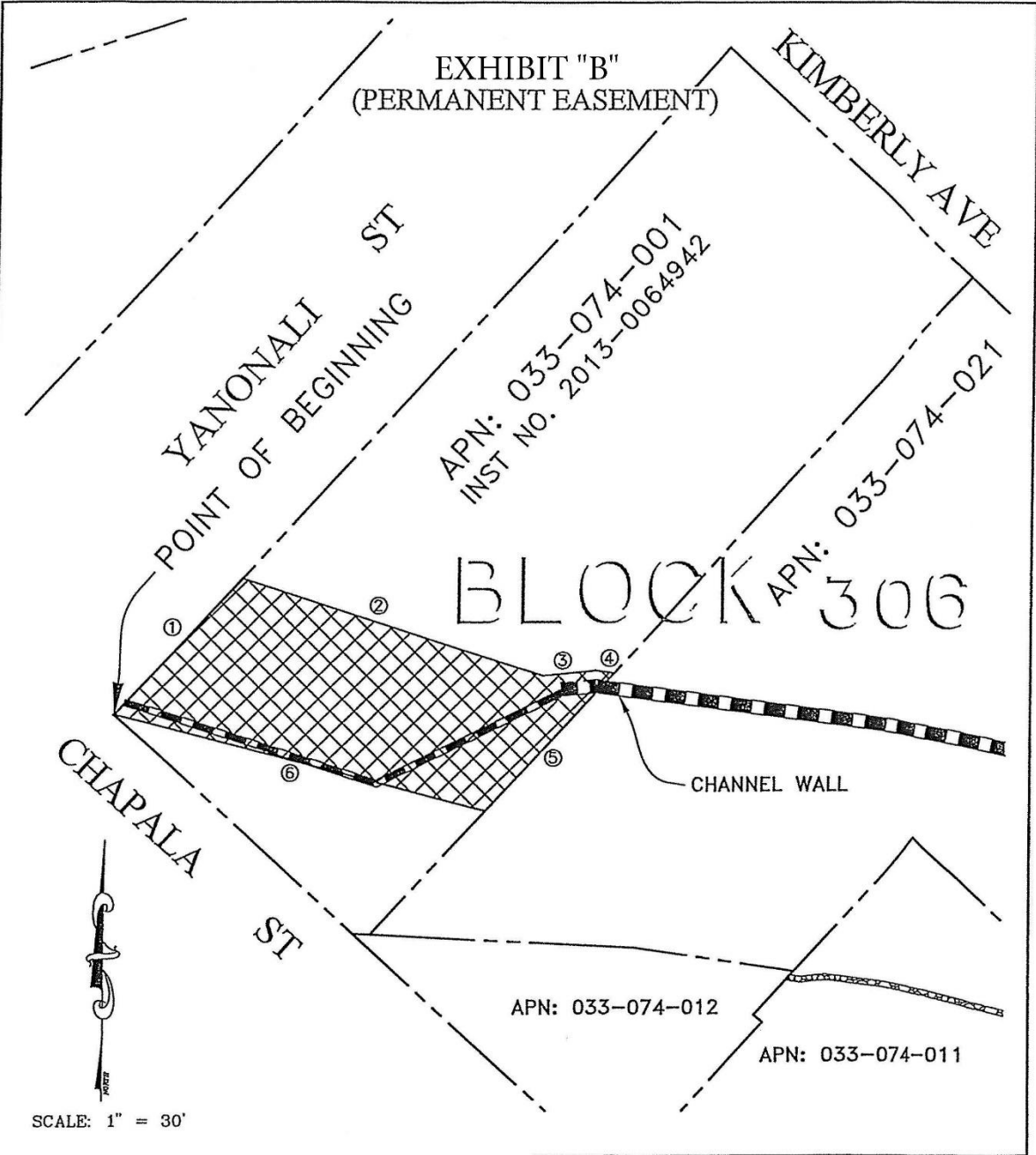



Attachment 2

ATTACHMENT 2

Exhibit B

Diagram of Permanent Easement



 PERMANENT EASEMENT
APPROX. EASEMENT AREA=2,929 sq.ft.



COUNTY OF SANTA BARBARA DEPARTMENT OF PUBLIC WORKS
COUNTY SURVEYOR'S OFFICE

PERMANENT EASEMENT

SANTA BARBARA COUNTY
FLOOD CONTROL DISTRICT
APN: 033-074-001
SANTA BARBARA COUNTY, CALIFORNIA

S941 S894