

OWNERS STATEMENT

WE HEREBY STATE THAT WE ARE THE OWNERS OF OR HAVE AN INTEREST IN THE LAND INCLUDED WITHIN THE SUBDIVISION SHOWN ON THE ANNEXED MAP AND THAT WE ARE THE ONLY PERSONS WHOSE CONSENT IS NECESSARY TO PASS A CLEAR TITLE TO SAID LAND. WE CONSENT TO THE MAKING AND RECORDING OF THIS MAP AND SUBDIVISION AS SHOWN WITHIN THE DISTINCTIVE BORDER LINES.

WE ALSO HEREBY DEDICATE THE EASEMENTS SHOWN HEREON FOR THE PURPOSES SET FORTH.

CIERVO FARMING CO., LLC, A CALIFORNIA LIMITED LIABILITY COMPANY,
BY: WHITE FAMILY TRUST, DATED AUGUST 21, 1987, MANAGING MEMBER

DAVE O. WHITE, TRUSTEE

RDC FARMING, LLC, A CALIFORNIA LIMITED LIABILITY COMPANY

O'MALLEY M. MILLER, MANAGER

TYX, LLC, A CALIFORNIA LIMITED LIABILITY

BY: BUTERA FAMILY TRUST, DATED MARCH 9, 1998, SOLE MEMBER

ROY T. BUTERA, TRUSTEE

STUART LAND & FARMING, LLC, A CALIFORNIA LIMITED LIABILITY

BY: STUART MANAGEMENT, LLC, A CALIFORNIA LIMITED PARTNERSHIP, SOLE MEMBER

D. SCOTT STUART, COMPANY MANAGER

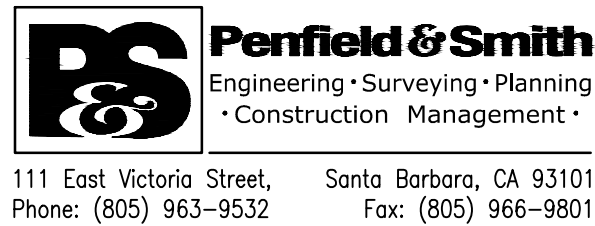
RABOBANK, N.A., A NATIONAL BANKING ASSOCIATION
BENEFICIARY UNDER DEED OF TRUST RECORDED JULY 2, 2009
AS INSTRUMENT NO. 09-39573 OF OFFICIAL RECORDS

BENJAMIN ALANIZ, VICE PRESIDENT

KYLE KOELBEL, ASSISTANT TREASURER

PARCEL MAP 14,771

BEING A SUBDIVISION OF PARCEL "B" OF PARCEL MAP NO. 12,839 IN THE COUNTY OF SANTA BARBARA, STATE OF CALIFORNIA, AS PER THE MAP RECORDED IN BOOK 22, PAGES 42 TO 45, INCLUSIVE, OF PARCEL MAPS, IN THE OFFICE OF THE COUNTY RECORDER OF SAID COUNTY.



SIGNATURE OMISSIONS

THE SIGNATURES OF THE FOLLOWING EASEMENT HOLDERS HAVE BEEN OMITTED PURSUANT TO SECTION 66445(e) OF THE GOVERNMENT CODE (STATE SUBDIVISION MAP ACT):

SOUTHERN CALIFORNIA EDISON, A CALIFORNIA CORPORATION, HOLDER OF A 100 FOOT WIDE EASEMENT FOR PUBLIC UTILITIES RECORDED MAY 25, 1960 AS INST NO. 16694 IN BOOK 1746, PAGE 350 OF OFFICIAL RECORDS.

ESTHER S. MARCHIANDO, HOLDER OF A 60 FOOT WIDE EASEMENT FOR TEMPORARY ROAD PURPOSES RECORDED DECEMBER 22, 1961 AS INST NO. 45946 IN BOOK 1892, PAGE 617 OF OFFICIAL RECORDS.

GOLETA COUNTY WATER DISTRICT, HOLDER OF A 20 FOOT WIDE EASEMENT FOR WATER PIPE LINES RECORDED APRIL 5, 1962 AS INST NO. 13643 IN BOOK 1916, PAGE 341 OF OFFICIAL RECORDS.

DEL CIERVO HOMEOWNERS, INC., HOLDER OF AN EASEMENT FOR COMMUNITY MASTER TV ANTENNA RECORDED FEBRUARY 4, 1965 AS INST NO. 4260 IN BOOK 2090, PAGE 685 OF OFFICIAL RECORDS.

DEL CIERVO HOMEOWNERS, INC., HOLDER OF AN EASEMENT FOR COMMUNITY MASTER TV ANTENNA RECORDED JUNE 22, 1965 AS INST NO. 21746 IN BOOK 2109, PAGE 1261 OF OFFICIAL RECORDS.

COUNTY OF SANTA BARBARA, CALIFORNIA AND THE SANTA BARBARA COUNTY FLOOD CONTROL AND WATER CONSERVATION DISTRICT, HOLDER OF AN EASEMENT FOR FLOOD CONTROL RECORDED JULY 6, 1971 AS INST NO. 20855 IN BOOK 2354, PAGE 280 OF OFFICIAL RECORDS.

SOUTHERN CALIFORNIA EDISON, A CALIFORNIA CORPORATION, HOLDER OF A MULTIPLE WIDTH EASEMENT FOR PUBLIC UTILITIES RECORDED FEBRUARY 16, 1978 AS INST NO. 78-7530 OF OFFICIAL RECORDS.

SOUTHERN CALIFORNIA EDISON, HOLDER OF A MULTIPLE WIDTH EASEMENT FOR PUBLIC UTILITIES A CALIFORNIA CORPORATION, RECORDED MAY 29, 1979 AS INST NO. 79-23797 OF OFFICIAL RECORDS.

WALTER S. DANIELS AND JEAN K. DANIELS, HUSBAND AND WIFE AS JOINT TENANTS, HOLDER OF A 30 FOOT EASEMENT FOR INGRESS AND EGRESS RECORDED OCTOBER 15, 1979 AS INST NO. 79-48053. OF OFFICIAL RECORDS.

SOUTHERN CALIFORNIA GAS, A CALIFORNIA CORPORATION, HOLDER OF A 30 FOOT EASEMENT FOR PUBLIC UTILITIES RECORDED FEBRUARY 26, 1980 AS INST NO. 80-7713 OF OFFICIAL RECORDS.

SOUTHERN CALIFORNIA GAS, A CALIFORNIA CORPORATION, HOLDER OF A 30 FOOT EASEMENT FOR PUBLIC UTILITIES RECORDED MAY 19, 1980 AS INST NO. 80-20129 OF OFFICIAL RECORDS.

SOUTHERN CALIFORNIA EDISON, A CALIFORNIA CORPORATION, HOLDER OF A MULTIPLE WIDTH EASEMENT FOR PUBLIC UTILITIES RECORDED JUNE 4, 1980 AS INST NO. 80-22095 OF OFFICIAL RECORDS.

SOUTHERN CALIFORNIA EDISON, A CALIFORNIA CORPORATION, HOLDER OF A MULTIPLE WIDTH EASEMENT FOR PUBLIC UTILITIES RECORDED JULY 7, 1989 AS INST NO. 89-044411 OF OFFICIAL RECORDS.

SOUTHERN CALIFORNIA EDISON, A CALIFORNIA CORPORATION, HOLDER OF A MULTIPLE WIDTH EASEMENT FOR PUBLIC UTILITIES RECORDED AUGUST 2, 1979 AS INST NO. 79-35982 OF OFFICIAL RECORDS.

SOUTHERN CALIFORNIA EDISON, A CALIFORNIA CORPORATION, HOLDER OF AN EASEMENT FOR ROAD PURPOSES RECORDED MARCH 6, 1930 AS INST NO. 2149 IN BOOK 206, PAGE 144 OF OFFICIAL RECORDS. THE EXACT LOCATION CANNOT BE ASCERTAINED FROM RECORD.

COUNTY OF SANTA BARBARA, HOLDER OF AN EASEMENT FOR PUBLIC PARK, PUBLIC RECREATION, AND OPEN SPACE AND FOR ROAD, INGRESS AND EGRESS AND INCIDENTAL PURPOSES RECORDED APRIL 13, 1962 AS INSTRUMENT NO. 15067 IN BOOK 1918, PAGE 758 AND MAY 14, 1962 AS INSTRUMENT NO. 19739 IN BOOK 1927, PAGE 78, BOTH OF OFFICIAL RECORDS. UNDERLYING PARCEL HAS BEEN RE-ZONED FOR AGRICULTURAL USE.

DEL CIERVO HOME OWNERS, INC, HOLDER OF AN EASEMENT FOR PRIVATE PARK, PRIVATE NON-COMMERCIAL RECREATION, AND OTHER OPEN-SPACE PURPOSES RECORDED AS INSTRUMENT 37384 IN BOOK 2010 PAGE 449 OF OFFICIAL RECORDS. HOLDING ENTITY NO LONGER EXISTS.

GOLETA WATER DISTRICT, HOLDER OF A DEDICATION FOR BASIN WATER, EXISTING WELLS AND WATER PIPELINES RECORDED NOVEMBER 16, 1989 AS INST NO. 89-076735 OF OFFICIAL RECORDS. THE EXACT LOCATION CANNOT BE ASCERTAINED FROM RECORD.

SURVEYOR'S STATEMENT

THIS MAP WAS PREPARED BY ME OR UNDER MY DIRECTION AND IS BASED UPON A FIELD SURVEY IN CONFORMANCE WITH THE REQUIREMENTS OF THE SUBDIVISION MAP ACT AND LOCAL ORDINANCE AT THE REQUEST OF CIERVO FARMING ON MARCH 27, 2013. I HEREBY STATE THAT THIS PARCEL MAP SUBSTANTIALLY CONFORMS TO THE APPROVED OR CONDITIONALLY APPROVED TENTATIVE MAP, IF ANY. I ALSO HEREBY STATE THAT ALL MONUMENTS ARE OF THE CHARACTER AND OCCUPY THE POSITIONS INDICATED AND ARE SUFFICIENT TO ENABLE THE SURVEY TO BE RETRACED.

KENNETH J. WILSON, P.L.S. NO. 7911 DATE



COUNTY SURVEYOR'S STATEMENT

I HEREBY STATE THAT I HAVE EXAMINED THIS MAP, THAT THE SUBDIVISION AS SHOWN IS SUBSTANTIALLY THE SAME AS IT APPEARED ON THE TENTATIVE MAP, IF REQUIRED, AND ANY APPROVED ALTERATIONS THEREOF, THAT ALL PROVISIONS OF CHAPTER 2 OF THE SUBDIVISION MAP ACT AND ANY LOCAL ORDINANCES APPLICABLE AT THE TIME OF APPROVAL OF THE TENTATIVE MAP, IF REQUIRED, HAVE BEEN COMPLIED WITH AND THAT I AM SATISFIED THAT THE MAP IS TECHNICALLY CORRECT.

ALEKSANDAR JEVREMOVIC, L.S. 8378 DATE
COUNTY SURVEYOR

COUNTY RECORDER'S STATEMENT

FILED THIS DAY OF 20 AT M., IN BOOK OF MAPS, AT PAGES AT THE REQUEST OF PENFIELD & SMITH, ENGINEERS-SURVEYORS

FEE:

JOSEPH F. HOLLAND BY DEPUTY
COUNTY CLERK-RECORDER-ASSESSOR

CLERK OF THE BOARD'S STATEMENT

I, MONA MIYASATO, CLERK OF THE BOARD OF SUPERVISORS OF SANTA BARBARA COUNTY, DO HEREBY STATE THAT ON 2014, I WAS DULY AUTHORIZED AND DIRECTED TO ENDORSE HEREON THE BOARD'S APPROVAL AND ACCEPTANCE OF THE PUBLIC UTILITY EASEMENT AS SHOWN HEREON AS AN EASEMENT TO THE COUNTY OF SANTA BARBARA. I FURTHERMORE STATE THAT PURSUANT TO GOVERNMENT CODE SECTION 66464 (STATE SUBDIVISION MAP ACT) THAT THE CERTIFICATES AND DEPOSITS REQUIRED UNDER GOVERNMENT CODE SECTION 66492 AND 66493 (STATE SUBDIVISION MAP ACT) ON THE PROPERTY WITHIN THIS SUBDIVISION HAVE BEEN FILED AND MADE.

MONA MIYASATO BY DEPUTY DATE
CLERK OF THE BOARD OF SUPERVISORS OF SANTA BARBARA COUNTY

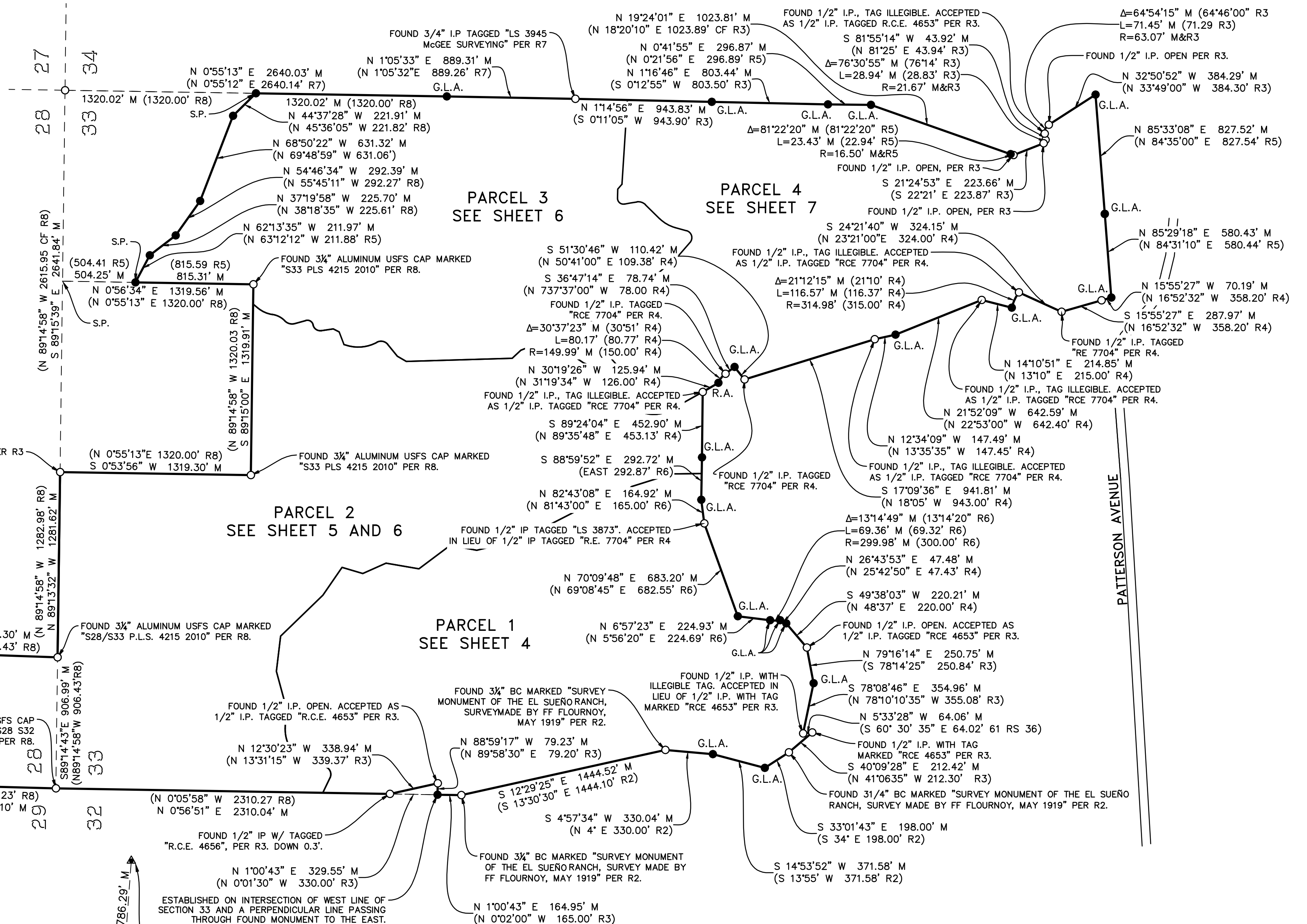
NOTICE

THIS MAP IS SUBJECT TO CERTIAN CONDITIONS AND INFORMATION INCLUDED IN A "NOTICE" AND RECORDED CONCURRENTLY AS INSTRUMENT NO. 20 O.R.



**LEGEND**

- CF = CALCULATED FROM
  - CSRC = CALIFORNIA SPATIAL REFERENCE CENTER
  - CS = COUNTY SURVEYOR'S MAP
  - CSF = COMBINED SCALE FACTOR
  - E = EASTING
  - G.L.A. = GRANT LINE ADJUSTMENT
  - LAT = LATITUDE
  - LONG = LONGITUDE
  - MA = MAPPING ANGLE
  - M = MEASURED
  - MB = MAP BOOK
  - N = NORTHING
  - O.R. = OFFICIAL RECORDS
  - PM = PARCEL MAP
  - RA = RECORD ANGLE
  - RS = RECORD OF SURVEY
  - R.O.W. = RIGHT-OF-WAY
  - S.P. = SINGLE PROPORTION
- 
- R1 = 11 RS 140
  - R2 = 12 RS 22
  - R3 = 61 RS 36
  - R4 = 57 MB 27-37
  - R5 = 18 PM 13-19
  - R6 = 22 PM 42-45
  - R7 = 174 RS 6-7
  - R8 = 177 RS 59-76
- 
- FOUND MONUMENT AS DESCRIBED HEREON.
  - SET 2" IRON PIPE WITH TAG MARKED "PLS 7911"
  - ▲ CONTINUOUSLY OPERATING REFERENCE STATION (CORS)



**BASIS OF BEARINGS**

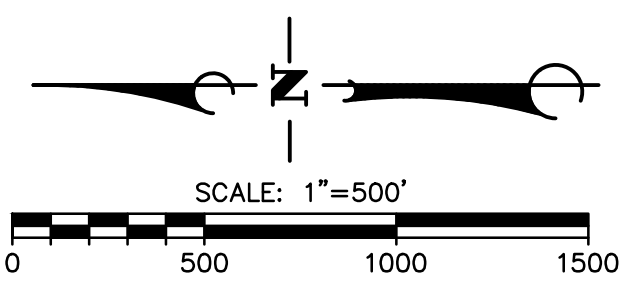
THE BASIS OF BEARINGS OF THIS MAP IS THE CALIFORNIA COORDINATE SYSTEM, NAD83 (CCS83), EPOCH 2009.00, ZONE 5, AS DETERMINED LOCALLY BY A LINE BETWEEN CORS "COPR" AND "UCSB" BEING S 85°50'31" E AS DERIVED FROM FROM POSITIONS FOR SAID STATIONS PUBLISHED BY THE CSRC.

**SURVEYOR'S NOTE**

ALL COORDINATES AND DISTANCES SHOWN HEREON AS MEASURED ARE U.S. SURVEY FOOT UNITS ON GRID. TO OBTAIN GROUND DISTANCES MULTIPLY SAID MEASURED DISTANCE BY 1.00007886, WHICH IS THE INVERSE OF THE PROJECT COMBINED SCALED FACTOR OF 0.99992115 CALCULATED AT THE 1/2" I.P. AT THE NORTHWEST END OF CAMINO MELENO. ALL DISTANCES SHOWN AS RECORD REFER TO THE UNITS SHOWN ON THE RECORD MAP OR DOCUMENT.

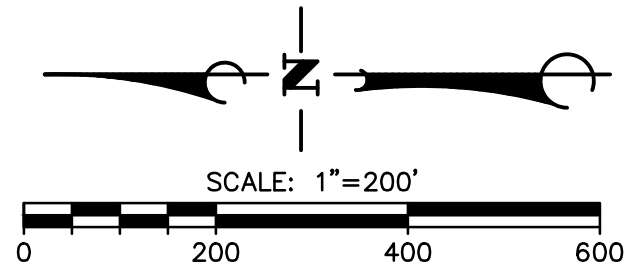
**PARCEL MAP 14,771**

BEING A SUBDIVISION OF PARCEL "B" OF PARCEL MAP NO. 12,839 IN THE COUNTY OF SANTA BARBARA, STATE OF CALIFORNIA, AS PER THE MAP RECORDED IN BOOK 22, PAGES 42 TO 45, INCLUSIVE, OF PARCEL MAPS, IN THE OFFICE OF THE COUNTY RECORDER OF SAID COUNTY.

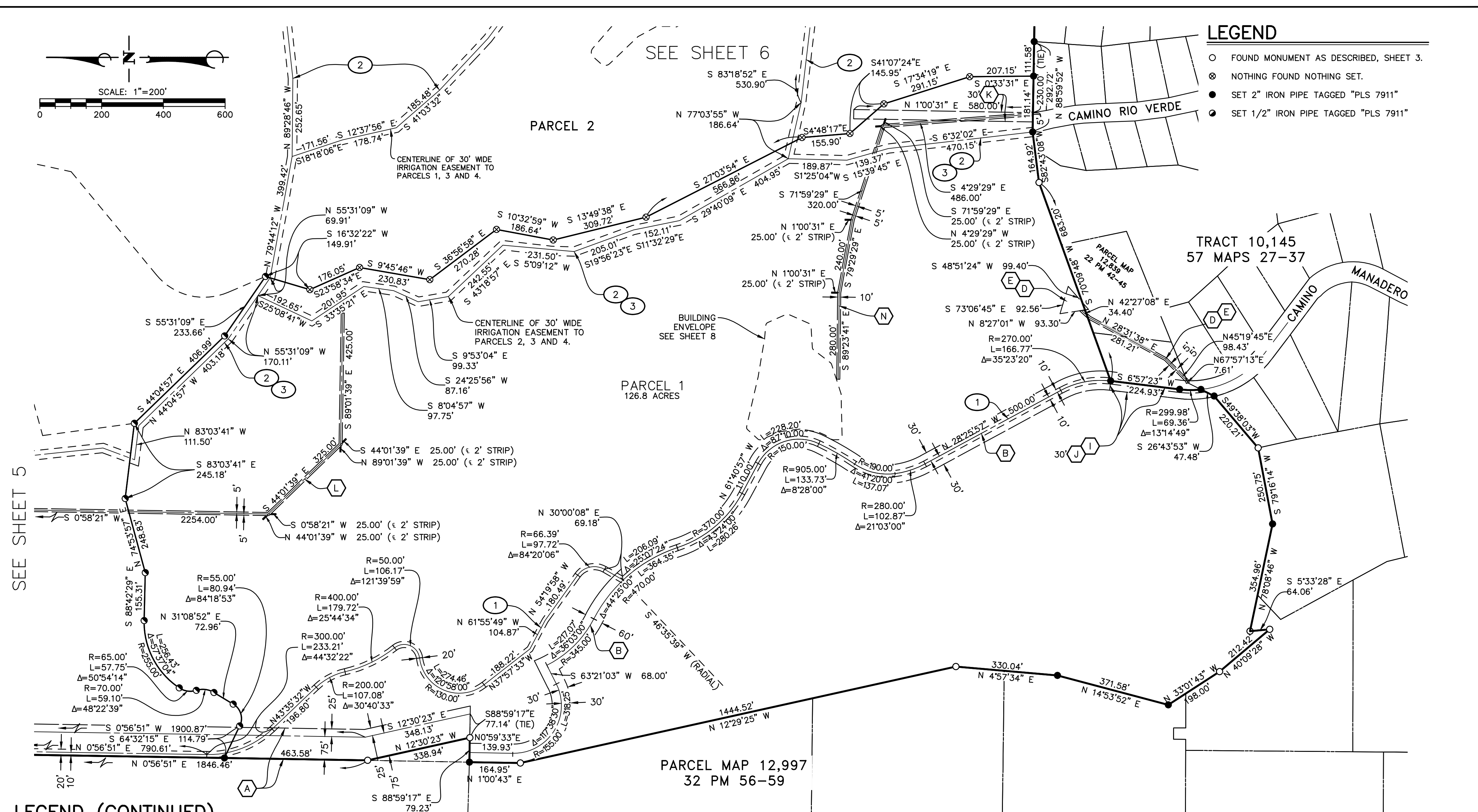


CSRC CORS "COPR"  
 LAT = 34°24'53.654224"  
 LONG = 119°52'46.241664"  
 N = 1977891.0002  
 E = 6005598.4618  
 ELEVATION = 45.35  
 MA = -1°04'16.84"  
 CSF = 0.99994271

CSRC CORS "UCSB"  
 LAT = 34°24'47.889927"  
 LONG = 119°50'37.681693"  
 N = 1977891.0002  
 E = 6005598.4618  
 ELEVATION = 88.68  
 MA = -1°03'03.56"  
 CSF = 0.99994080



- LEGEND**
- FOUND MONUMENT AS DESCRIBED, SHEET 3.
  - ⊗ NOTHING FOUND NOTHING SET.
  - SET 2" IRON PIPE TAGGED "PLS 7911"
  - SET 1/2" IRON PIPE TAGGED "PLS 7911"



SEE SHEET 5

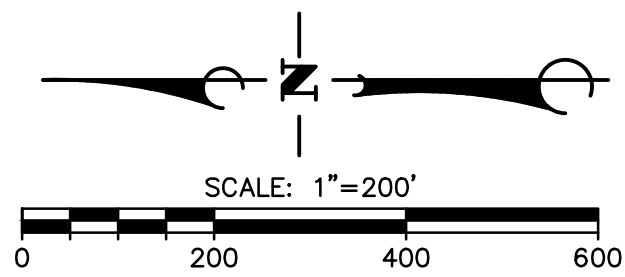
SEE SHEET 6

**LEGEND (CONTINUED)**

- ① CENTERLINE OF 20' WIDE EASEMENT FOR PRIVATE WATERLINES, AND FOR PRIVATE INGRESS AND EGRESS RECIPROCAL TO PARCELS 1, 2, 3, AND 4 PER THIS MAP.
- ② CENTERLINE OF A 30' WIDE PRIVATE EASEMENT FOR IRRIGATION LINES AND DOMESTIC WATERLINES, RECIPROCAL TO PARCELS 1, 2, 3, AND 4 PER THIS MAP.
- ③ CENTERLINE OF 30' WIDE NON-EXCLUSIVE EASEMENT FOR PRIVATE INGRESS AND EGRESS RECIPROCAL TO PARCELS 1, 2, 3, AND 4 PER THIS MAP.
- A A 100 FOOT WIDE EASEMENT FOR PUBLIC UTILITIES GRANTED TO SOUTHERN CALIFORNIA EDISON, A CALIFORNIA CORPORATION, RECORDED MAY 25, 1960 AS INST NO. 16694 IN BOOK 1746, PAGE 350 OF OFFICIAL RECORDS.
- B CENTERLINE OF A 60 FOOT WIDE EASEMENT FOR TEMPORARY ROAD GRANTED TO ESTHER S. MARCHIANDO, RECORDED DECEMBER 22, 1961 AS INST NO. 45946 IN BOOK 1892, PAGE 617 OF OFFICIAL RECORDS.
- D AN EASEMENT FOR COMMUNITY MASTER TV ANTENNA GRANTED TO DEL CIERVO HOMEOWNERS, INC., RECORDED FEBRUARY 4, 1965 AS INST NO. 4260 IN BOOK 2090, PAGE 685 OF OFFICIAL RECORDS.
- E AN EASEMENT FOR COMMUNITY MASTER TV ANTENNA GRANTED TO DEL CIERVO HOMEOWNERS, INC., RECORDED JUNE 22, 1965 AS INST NO. 21746 IN BOOK 2109, PAGE 1261 OF OFFICIAL RECORDS.
- I A 30 FOOT EASEMENT FOR INGRESS AND EGRESS GRANTED TO WALTER S. DANIELS AND JEAN K. DANIELS, HUSBAND AND WIFE AS JOINT TENANTS, RECORDED OCTOBER 15, 1979 AS INST NO.79-48053. OF OFFICIAL RECORDS.
- J A 30 FOOT EASEMENT FOR PUBLIC UTILITIES GRANTED TO SOUTHERN CALIFORNIA GAS, A CALIFORNIA CORPORATION, RECORDED FEBRUARY 26, 1980 AS INST NO. 80-7713 OF OFFICIAL RECORDS.
- K A 30 FOOT EASEMENT FOR PUBLIC UTILITIES GRANTED TO SOUTHERN CALIFORNIA GAS, A CALIFORNIA CORPORATION, RECORDED MAY 19, 1980 AS INST NO. 80-20129 OF OFFICIAL RECORDS.
- L A MULTIPLE WIDTH EASEMENT FOR PUBLIC UTILITIES GRANTED TO SOUTHERN CALIFORNIA EDISON, A CALIFORNIA CORPORATION, RECORDED JUNE 4, 1980 AS INST NO. 80-22095 OF OFFICIAL RECORDS.
- N A MULTIPLE WIDTH EASEMENT FOR PUBLIC UTILITIES GRANTED TO SOUTHERN CALIFORNIA EDISON, A CALIFORNIA CORPORATION, RECORDED AUGUST 2, 1979 AS INST NO. 79-35982 OF OFFICIAL RECORDS.

**PARCEL MAP 14,771**

BEING A SUBDIVISION OF PARCEL "B" OF PARCEL MAP NO. 12,839 IN THE COUNTY OF SANTA BARBARA, STATE OF CALIFORNIA, AS PER THE MAP RECORDED IN BOOK 22, PAGES 42 TO 45, INCLUSIVE, OF PARCEL MAPS, IN THE OFFICE OF THE COUNTY RECORDER OF SAID COUNTY.



**LEGEND**

- FOUND MONUMENT AS DESCRIBED, SHEET 3.
- ⊗ NOTHING FOUND NOTHING SET.
- SET 2" IRON PIPE TAGGED "PLS 7911"
- SET 1/2" IRON PIPE TAGGED "PLS 7911"

SECTION 28  
T5N R28W

PARCEL 2  
193.3 ACRES (GROSS)  
115.9 ACRES (NET)

PARCEL 1

TRACT 10,145  
57 MAPS 27-37

SEE SHEET 6

SEE SHEET 4

**LEGEND (CONTINUED)**

- ① CENTERLINE OF 20' WIDE EASEMENT FOR PRIVATE WATERLINES, AND FOR PRIVATE INGRESS AND EGRESS RECIPROCAL TO PARCELS 1, 2, 3, AND 4 PER THIS MAP.
- ② CENTERLINE OF A 30' WIDE PRIVATE EASEMENT FOR IRRIGATION LINES AND DOMESTIC WATERLINES RECIPROCAL TO PARCELS 1, 2, 3, AND 4 PER THIS MAP.
- ③ CENTERLINE OF 30' WIDE NON-EXCLUSIVE EASEMENT FOR PRIVATE INGRESS AND EGRESS RECIPROCAL TO PARCELS 1, 2, 3, AND 4 PER THIS MAP.
- ④ A PRIVATE EASEMENT FOR RECREATION AND WATER COMPANY USAGE, RECIPROCAL TO PARCELS 1, 2, 3 AND 4 PER THIS MAP.

- A A 100 FOOT WIDE EASEMENT FOR PUBLIC UTILITIES GRANTED TO SOUTHERN CALIFORNIA EDISON, A CALIFORNIA CORPORATION, RECORDED MAY 25, 1960 AS INST NO. 16694 IN BOOK 1746, PAGE 350 OF OFFICIAL RECORDS.
- G A MULTIPLE WIDTH EASEMENT FOR PUBLIC UTILITIES GRANTED TO SOUTHERN CALIFORNIA EDISON, A CALIFORNIA CORPORATION, RECORDED FEBRUARY 16, 1978 AS INST NO. 78-7530 OF OFFICIAL RECORDS.
- H A MULTIPLE WIDTH EASEMENT FOR PUBLIC UTILITIES GRANTED TO SOUTHERN CALIFORNIA EDISON, A CALIFORNIA CORPORATION, RECORDED MAY 29, 1979 AS INST NO. 79-23797 OF OFFICIAL RECORDS.
- M A MULTIPLE WIDTH EASEMENT FOR PUBLIC UTILITIES GRANTED TO SOUTHERN CALIFORNIA EDISON, A CALIFORNIA CORPORATION, RECORDED JULY 7, 1989 AS INST NO. 89-044411 OF OFFICIAL RECORDS.
- L A MULTIPLE WIDTH EASEMENT FOR PUBLIC UTILITIES GRANTED TO SOUTHERN CALIFORNIA EDISON, A CALIFORNIA CORPORATION, RECORDED JUNE 4, 1980 AS INST NO. 80-22095 OF OFFICIAL RECORDS.

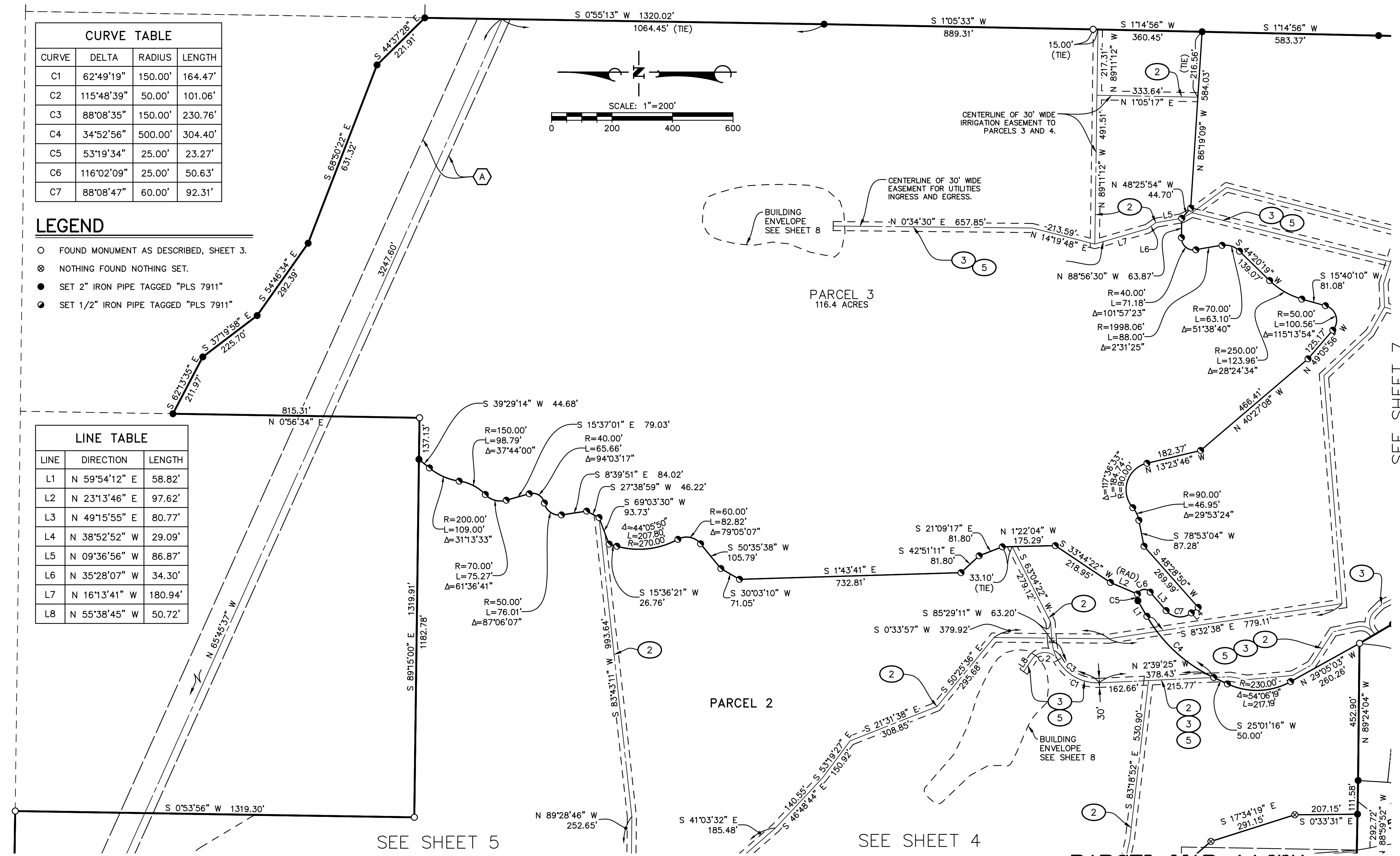
**PARCEL MAP 14,771**

BEING A SUBDIVISION OF PARCEL "B" OF PARCEL MAP NO. 12,839 IN THE COUNTY OF SANTA BARBARA, STATE OF CALIFORNIA, AS PER THE MAP RECORDED IN BOOK 22, PAGES 42 TO 45, INCLUSIVE, OF PARCEL MAPS, IN THE OFFICE OF THE COUNTY RECORDER OF SAID COUNTY.

CURVE TABLE			
CURVE	DELTA	RADIUS	LENGTH
C1	62°49'19"	150.00'	164.47'
C2	115°48'39"	50.00'	101.06'
C3	88°08'35"	150.00'	230.76'
C4	34°52'56"	500.00'	304.40'
C5	53°19'34"	25.00'	23.27'
C6	116°02'09"	25.00'	50.63'
C7	88°08'47"	60.00'	92.31'

- LEGEND**
- FOUND MONUMENT AS DESCRIBED, SHEET 3.
  - ⊗ NOTHING FOUND NOTHING SET.
  - SET 2" IRON PIPE TAGGED "PLS 7911"
  - SET 1/2" IRON PIPE TAGGED "PLS 7911"

LINE TABLE		
LINE	DIRECTION	LENGTH
L1	N 59°54'12" E	58.82'
L2	N 23°13'46" E	97.62'
L3	N 49°15'55" E	80.77'
L4	N 38°52'52" W	29.09'
L5	N 09°36'56" W	86.87'
L6	N 35°28'07" W	34.30'
L7	N 16°13'41" W	180.94'
L8	N 55°38'45" W	50.72'



**LEGEND (CONTINUED)**

- ② CENTERLINE OF A 30' WIDE EASEMENT FOR PRIVATE IRRIGATION AND DOMESTIC WATER LINES RECIPROCAL TO PARCELS 1, 2, 3, AND 4 PER THIS MAP.
- ③ CENTERLINE OF 30' WIDE NON-EXCLUSIVE EASEMENT FOR PRIVATE INGRESS AND EGRESS RECIPROCAL TO PARCELS 1, 2, 3, AND 4 PER THIS MAP.
- ⑤ CENTERLINE OF 30' WIDE NON-EXCLUSIVE EASEMENT FOR PUBLIC UTILITIES TO THE COUNTY OF SANTA BARBARA PER THIS MAP.
- Ⓐ A 100 FOOT WIDE EASEMENT FOR PUBLIC UTILITIES GRANTED TO SOUTHERN CALIFORNIA EDISON, A CALIFORNIA CORPORATION, RECORDED MAY 25, 1960 AS INST NO. 16694 IN BOOK 1746, PAGE 350 OF OFFICIAL RECORDS.

**PARCEL MAP 14,771**

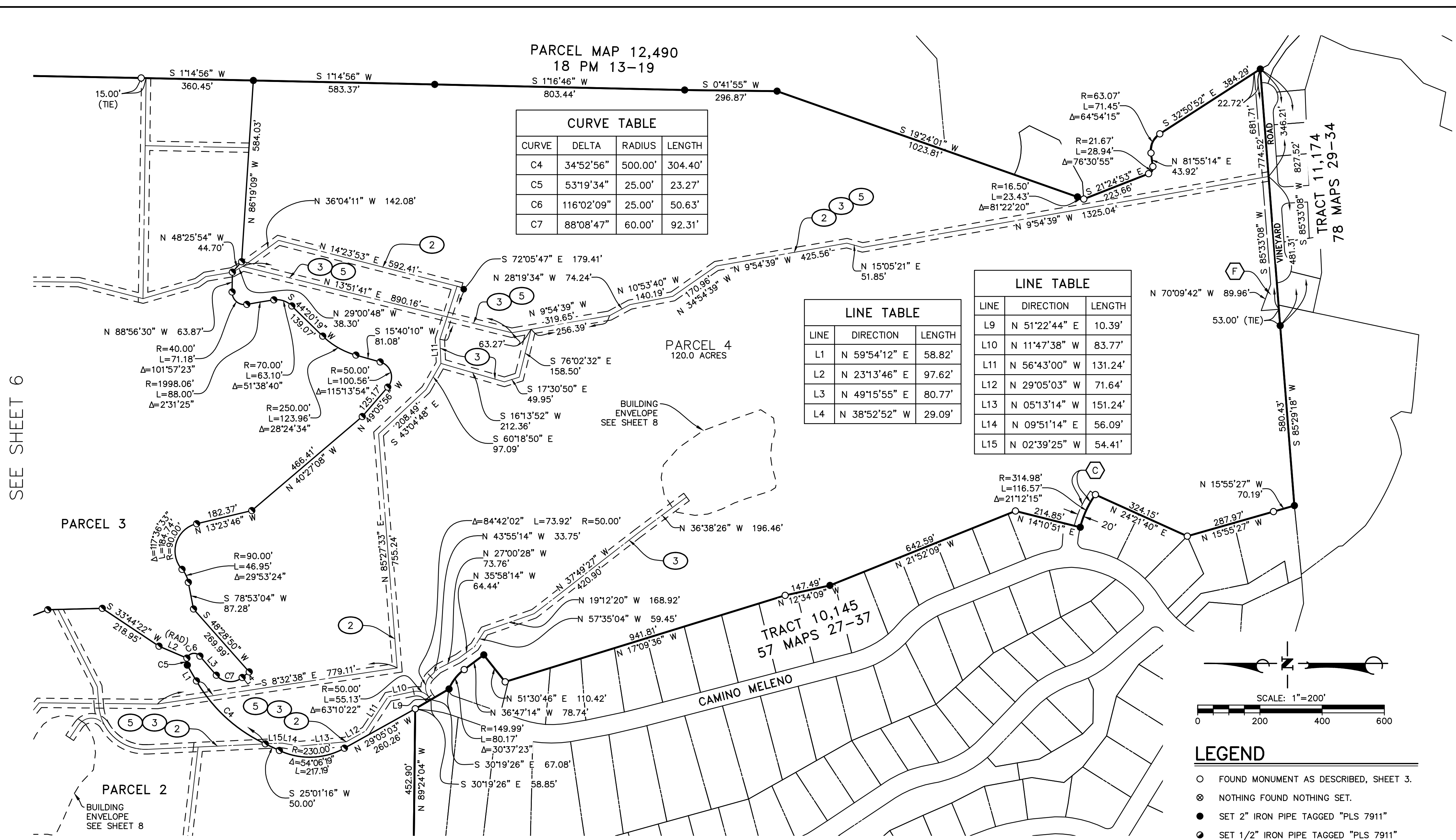
BEING A SUBDIVISION OF PARCEL "B" OF PARCEL MAP NO. 12,839 IN THE COUNTY OF SANTA BARBARA, STATE OF CALIFORNIA, AS PER THE MAP RECORDED IN BOOK 22, PAGES 42 TO 45, INCLUSIVE, OF PARCEL MAPS, IN THE OFFICE OF THE COUNTY RECORDER OF SAID COUNTY.

PARCEL MAP 12,490  
18 PM 13-19

CURVE TABLE			
CURVE	DELTA	RADIUS	LENGTH
C4	34°52'56"	500.00'	304.40'
C5	53°19'34"	25.00'	23.27'
C6	116°02'09"	25.00'	50.63'
C7	88°08'47"	60.00'	92.31'

LINE TABLE		
LINE	DIRECTION	LENGTH
L1	N 59°54'12" E	58.82'
L2	N 23°13'46" E	97.62'
L3	N 49°15'55" E	80.77'
L4	N 38°52'52" W	29.09'

LINE TABLE		
LINE	DIRECTION	LENGTH
L9	N 51°22'44" E	10.39'
L10	N 11°47'38" W	83.77'
L11	N 56°43'00" W	131.24'
L12	N 29°05'03" W	71.64'
L13	N 05°13'14" W	151.24'
L14	N 09°51'14" E	56.09'
L15	N 02°39'25" W	54.41'



SEE SHEET 6

SEE SHEET 4

**LEGEND**

- ② CENTERLINE OF A 30' WIDE PRIVATE EASEMENT FOR IRRIGATION LINES AND DOMESTIC WATERLINES RECIPROCAL TO PARCELS 1, 2, 3, AND 4 PER THIS MAP.
- ③ CENTERLINE OF 30' WIDE NON-EXCLUSIVE EASEMENT FOR PRIVATE INGRESS AND EGRESS RECIPROCAL TO PARCELS 1, 2, 3, AND 4 PER THIS MAP.
- ⑤ CENTERLINE OF 30' WIDE NON-EXCLUSIVE EASEMENT FOR PUBLIC UTILITIES TO THE COUNTY OF SANTA BARBARA PER THIS MAP.

- ⊙ A 20 FOOT WIDE EASEMENT FOR WATER PIPE LINES GRANTED TO GOLETA COUNTY WATER DISTRICT, RECORDED APRIL 5, 1962 AS INST NO. 13643 IN BOOK 1916, PAGE 341 OF OFFICIAL RECORDS.
- ⊞ AN EASEMENT FOR FLOOD CONTROL GRANTED TO COUNTY OF SANTA BARBARA, CALIFORNIA AND THE SANTA BARBARA COUNTY FLOOD CONTROL AND WATER CONSERVATION DISTRICT, RECORDED JULY 6, 1971 AS INST NO. 20855 IN BOOK 2354, PAGE 280 OF OFFICIAL RECORDS.

**LEGEND**

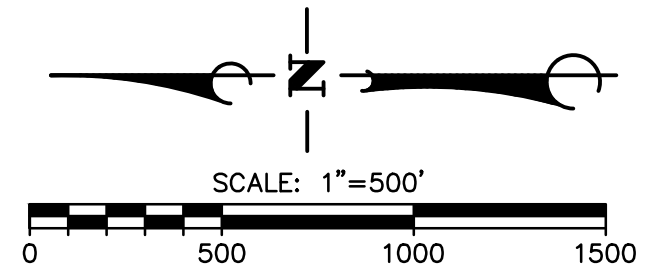
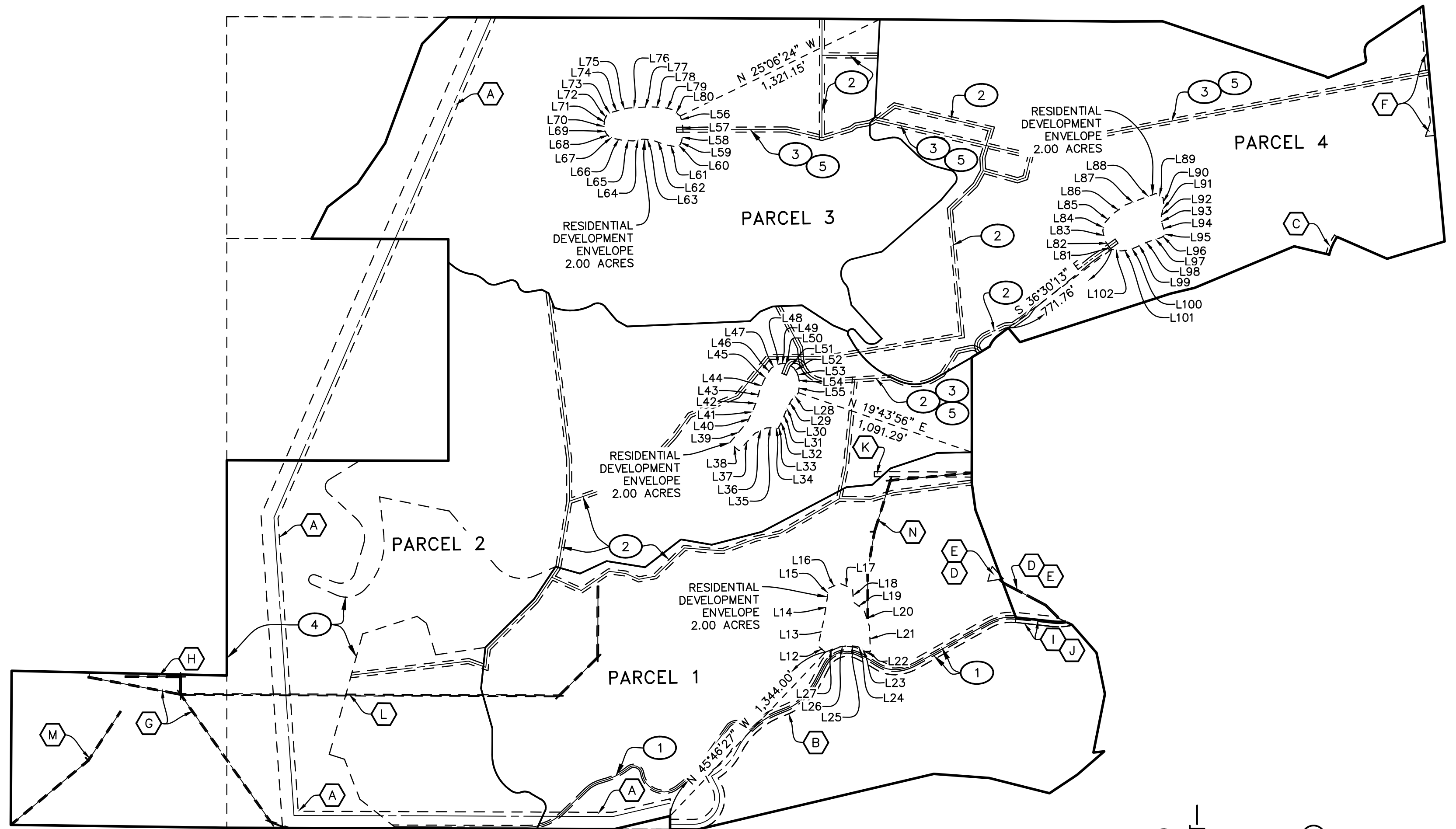
- FOUND MONUMENT AS DESCRIBED, SHEET 3.
- ⊞ NOTHING FOUND NOTHING SET.
- SET 2" IRON PIPE TAGGED "PLS 7911"
- SET 1/2" IRON PIPE TAGGED "PLS 7911"

**PARCEL MAP 14,771**

BEING A SUBDIVISION OF PARCEL "B" OF PARCEL MAP NO. 12,839 IN THE COUNTY OF SANTA BARBARA, STATE OF CALIFORNIA, AS PER THE MAP RECORDED IN BOOK 22, PAGES 42 TO 45, INCLUSIVE, OF PARCEL MAPS, IN THE OFFICE OF THE COUNTY RECORDER OF SAID COUNTY.

LINE TABLE		
LINE	DIRECTION	LENGTH
L12	N 42°28'25" E	57.39
L13	S 76°59'10" E	171.98
L14	S 80°24'44" E	124.37
L15	S 84°52'05" E	50.34
L16	S 23°44'48" E	75.78
L17	S 23°50'28" W	83.32
L18	S 86°31'55" W	80.02
L19	S 37°24'53" W	77.13
L20	S 72°16'48" W	103.60
L21	S 88°37'24" W	148.29
L22	N 00°49'31" W	31.29
L23	N 38°04'03" E	30.81
L24	N 27°52'59" E	24.90
L25	N 04°06'50" E	57.90
L26	N 07°13'17" W	62.45
L27	N 22°00'20" W	76.72
L28	N 46°14'25" W	60.84
L29	N 59°03'59" W	37.50
L30	N 66°06'46" W	40.99
L31	N 67°14'56" W	48.46
L32	N 63°42'41" W	42.32
L33	N 60°19'03" W	19.46
L34	N 15°01'40" E	22.73
L35	N 00°39'32" W	46.59
L36	N 24°10'44" W	76.06
L37	N 46°47'18" W	140.01
L38	N 41°13'51" E	72.21
L39	S 49°06'08" E	161.79
L40	S 63°04'06" E	35.91
L41	S 64°18'07" E	61.74
L42	S 70°03'34" E	50.09
L43	S 73°46'35" E	56.78
L44	S 65°17'23" E	57.49
L45	S 62°19'36" E	47.38
L46	S 54°35'58" E	41.43
L47	S 35°42'05" E	34.16
L48	S 14°39'37" E	27.33
L49	S 03°00'49" E	23.22
L50	S 06°18'57" W	22.55
L51	S 33°51'48" W	41.68
L52	S 56°40'47" W	35.54
L53	S 71°03'28" W	28.82
L54	S 83°06'33" W	37.29
L55	N 83°11'33" W	54.91
L56	S 73°32'55" W	43.99
L57	S 86°38'59" W	60.84

LINE TABLE		
LINE	DIRECTION	LENGTH
L58	N 78°29'24" W	46.63
L59	N 66°59'25" W	20.28
L60	N 43°25'29" W	24.04
L61	N 11°16'46" E	80.51
L62	N 21°02'41" E	78.48
L63	N 06°02'20" E	53.66
L64	N 09°53'27" W	58.19
L65	N 03°15'33" E	57.76
L66	N 12°55'58" E	59.98
L67	N 20°20'00" E	27.59
L68	N 45°48'45" E	24.98
L69	N 63°50'38" E	33.19
L70	S 86°19'39" E	28.05
L71	S 83°08'15" E	27.08
L72	S 63°16'10" E	34.91
L73	S 22°28'09" E	33.82
L74	S 15°04'35" E	51.61
L75	S 12°01'04" E	46.05
L76	S 03°19'10" E	66.23
L77	S 00°47'46" E	69.00
L78	S 02°25'15" W	68.10
L79	S 12°55'58" W	59.98
L80	S 40°30'13" W	61.99
L81	N 48°07'23" E	22.67
L82	N 57°08'44" E	46.71
L83	N 80°02'00" E	55.77
L84	S 79°51'05" E	41.09
L85	S 49°01'55" E	72.78
L86	S 34°46'36" E	98.42
L87	S 20°24'50" E	97.83
L88	S 19°26'34" E	98.00
L89	S 33°07'03" W	49.72
L90	S 83°49'52" W	44.93
L91	N 74°03'29" W	39.55
L92	N 78°37'28" W	42.02
L93	S 77°29'32" W	34.07
L94	S 72°13'31" W	52.40
L95	N 79°02'24" W	16.87
L96	N 32°28'37" W	22.09
L97	N 16°57'45" W	71.77
L98	N 19°42'44" W	47.48
L99	N 26°22'33" W	43.83
L100	N 19°34'06" W	48.66
L101	N 05°50'58" W	41.81
L102	N 09°58'22" E	59.46



**NOTE**

EASEMENTS DEPICTED HEREON ARE DIMENSIONED ON SHEETS 4 THROUGH 7.

**INFORMATIONAL MAP SHEET  
PARCEL MAP 14,771**

BEING A SUBDIVISION OF PARCEL "B" OF PARCEL MAP NO. 12,839 IN THE COUNTY OF SANTA BARBARA, STATE OF CALIFORNIA, AS PER THE MAP RECORDED IN BOOK 22, PAGES 42 TO 45, INCLUSIVE, OF PARCEL MAPS, IN THE OFFICE OF THE COUNTY RECORDER OF SAID COUNTY.