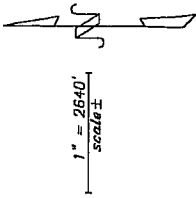


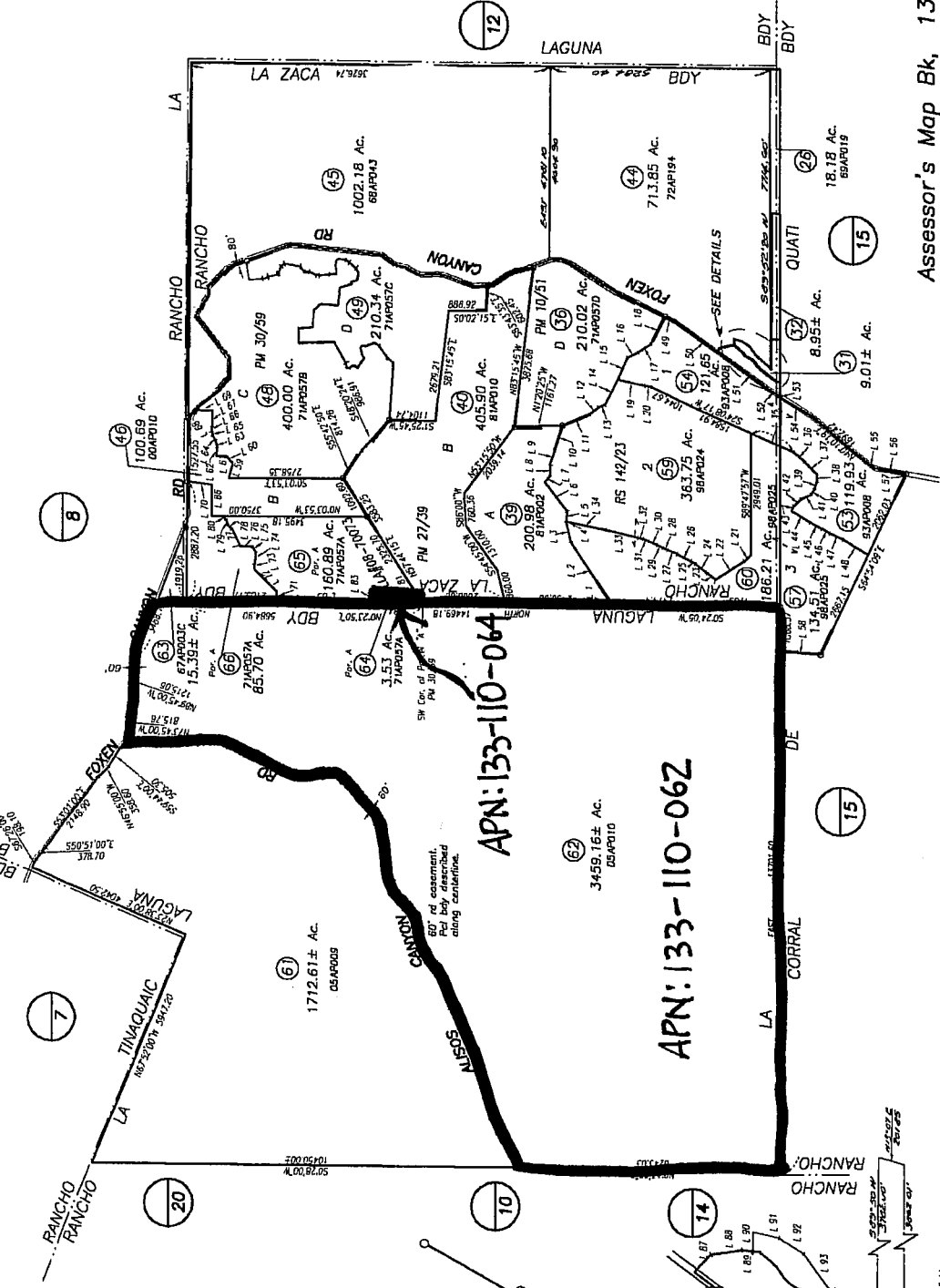
Agricultural Preserve 09AGP-00000-00029

POR. RANCHOS LA LAGUNA, LA ZACA, & CORRAL DE QUATI

133-11



NO.	BEARING	DISTANCE
L 1	S 82° 15' 30" W	1620.55
L 2	S 78° 13' 01" W	502.35
L 3	S 87° 23' 00" W	14.64
L 4	N 85° 40' 20" E	680.37
L 5	S 48° 11' 20" E	204.86
L 6	N 87° 07' 37" E	263.64
L 7	N 77° 10' 29" E	405.91
L 8	S 72° 09' 55" E	695.58
L 9	S 77° 01' 13" E	791.76
L 10	S 72° 09' 55" E	695.58
L 11	S 77° 01' 13" E	791.76
L 12	S 72° 09' 55" E	695.58
L 13	S 77° 01' 13" E	791.76
L 14	S 72° 09' 55" E	695.58
L 15	N 68° 18' 49" W	290.09
L 16	N 68° 18' 49" W	290.09
L 17	N 68° 18' 49" W	290.09
L 18	N 68° 18' 49" W	290.09
L 19	N 68° 18' 49" W	290.09
L 20	N 68° 18' 49" W	290.09
L 21	N 68° 18' 49" W	290.09
L 22	N 68° 18' 49" W	290.09
L 23	N 68° 18' 49" W	290.09
L 24	N 68° 18' 49" W	290.09
L 25	N 68° 18' 49" W	290.09
L 26	N 68° 18' 49" W	290.09
L 27	N 68° 18' 49" W	290.09
L 28	N 68° 18' 49" W	290.09
L 29	N 68° 18' 49" W	290.09
L 30	N 68° 18' 49" W	290.09
L 31	N 68° 18' 49" W	290.09
L 32	N 68° 18' 49" W	290.09
L 33	N 68° 18' 49" W	290.09
L 34	N 68° 18' 49" W	290.09
L 35	N 68° 18' 49" W	290.09
L 36	N 68° 18' 49" W	290.09
L 37	N 68° 18' 49" W	290.09
L 38	N 68° 18' 49" W	290.09
L 39	N 68° 18' 49" W	290.09
L 40	N 68° 18' 49" W	290.09



NO.	BEARING	DISTANCE
L 41	S 42° 35' 40" E	240.30
L 42	S 42° 35' 40" E	240.30
L 43	S 42° 35' 40" E	240.30
L 44	S 42° 35' 40" E	240.30
L 45	S 42° 35' 40" E	240.30
L 46	S 42° 35' 40" E	240.30
L 47	S 42° 35' 40" E	240.30
L 48	S 42° 35' 40" E	240.30
L 49	S 42° 35' 40" E	240.30
L 50	S 42° 35' 40" E	240.30
L 51	S 42° 35' 40" E	240.30
L 52	S 42° 35' 40" E	240.30
L 53	S 42° 35' 40" E	240.30
L 54	S 42° 35' 40" E	240.30
L 55	S 42° 35' 40" E	240.30
L 56	S 42° 35' 40" E	240.30
L 57	S 42° 35' 40" E	240.30
L 58	S 42° 35' 40" E	240.30
L 59	S 42° 35' 40" E	240.30
L 60	S 42° 35' 40" E	240.30
L 61	S 42° 35' 40" E	240.30
L 62	S 42° 35' 40" E	240.30
L 63	S 42° 35' 40" E	240.30
L 64	S 42° 35' 40" E	240.30
L 65	S 42° 35' 40" E	240.30
L 66	S 42° 35' 40" E	240.30
L 67	S 42° 35' 40" E	240.30
L 68	S 42° 35' 40" E	240.30
L 69	S 42° 35' 40" E	240.30
L 70	S 42° 35' 40" E	240.30
L 71	S 42° 35' 40" E	240.30
L 72	S 42° 35' 40" E	240.30
L 73	S 42° 35' 40" E	240.30
L 74	S 42° 35' 40" E	240.30
L 75	S 42° 35' 40" E	240.30
L 76	S 42° 35' 40" E	240.30
L 77	S 42° 35' 40" E	240.30
L 78	S 42° 35' 40" E	240.30
L 79	S 42° 35' 40" E	240.30
L 80	S 42° 35' 40" E	240.30
L 81	S 42° 35' 40" E	240.30
L 82	S 42° 35' 40" E	240.30
L 83	S 42° 35' 40" E	240.30
L 84	S 42° 35' 40" E	240.30
L 85	S 42° 35' 40" E	240.30
L 86	S 42° 35' 40" E	240.30
L 87	S 42° 35' 40" E	240.30
L 88	S 42° 35' 40" E	240.30
L 89	S 42° 35' 40" E	240.30
L 90	S 42° 35' 40" E	240.30
L 91	S 42° 35' 40" E	240.30
L 92	S 42° 35' 40" E	240.30
L 93	S 42° 35' 40" E	240.30
L 94	S 42° 35' 40" E	240.30
L 95	S 42° 35' 40" E	240.30

NOTICE
Assessor Parcels are for tax assessment purposes only and do not indicate either parcel legality or a valid building site.

Assessor's Map Bk, 133-Pg, 11
County of Santa Barbara, Calif.

47 into 64, 65, & 66
LD/09

DETAIL
Scale 1" = 800'

SEE
DETAIL A

DETAIL A
Scale 1" = 200'