

Tompkins New Ag Preserve Contract
11 AGP-00000-00018

LEGAL DESCRIPTION
Exhibit A

Parcel 1:

Being all that portion of the Northeast one-quarter of Section 8, Township 9 North, Range 33 West, San Bernardino Meridian, according to the Official Plat thereof, in the County of Santa Barbara, State of California, as shown on the map filed in Book 175 or Records of Survey, Page 100, in the Office of the County Recorder of said County and State, described as follows:

Commencing at the Southwest corner of the Northeast one-quarter of said Section 8 as shown on said map; thence along the Southerly line of said Northeast one-quarter, South $89^{\circ} 35' 15''$ East, 56.00 feet to the True Point of Beginning, thence,

First North $00^{\circ} 15' 02''$ East, parallel to and 56.00 feet Easterly of the Westerly line of said Northeast one-quarter, 2,636.59 feet to a point in the Northerly line of said Northeast one-quarter; thence,

Second South $89^{\circ} 35' 00''$ East, along said Northerly line, 2,336.62 feet, thence,

Third South $00^{\circ} 17' 50''$ West, parallel to and 295.16 feet Westerly of the Easterly line of said Northeast one-quarter, 295.16 feet; thence,

Fourth South $89^{\circ} 35' 00''$ East, parallel to and 295.16 feet Southerly of said Northerly line, 295.16 feet to a point in said Easterly line; thence,

Fifth South $00^{\circ} 17' 50''$ West, along said Easterly line, 2295.23 feet to a point; thence,

Sixth North $89^{\circ} 35' 15''$ West, parallel to and 46.00 feet Northerly of the Southerly line of said Northeast one-quarter, 251.00 feet to a point; thence,

Seventh North $00^{\circ} 17' 50''$ East, parallel to the Easterly line of said Northeast one-quarter, 57.00 feet; thence,

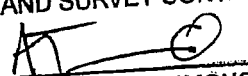
Eighth North $89^{\circ} 35' 15''$ West, parallel to and 103.00 feet Northerly of said Southerly line, 479.00 feet; thence,

Ninth South $00^{\circ} 17' 50''$ West, parallel to the Easterly line of said Northeast one-quarter, 103.00 feet to a point in said Southerly line; thence,

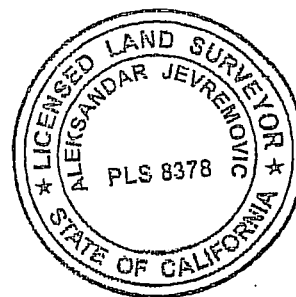
Tenth North $89^{\circ} 35' 15''$ West, along said Southerly line, 1,899.62 feet to the Point of Beginning.

APN 129-120-39 and 129-120-31

APPROVED AS TO FORM
AND SURVEY CONTENT

 Deputy for:

MICHAEL B. EMMONS, PLS 5899
COUNTY SURVEYOR
LICENSE EXP. 12/31/11



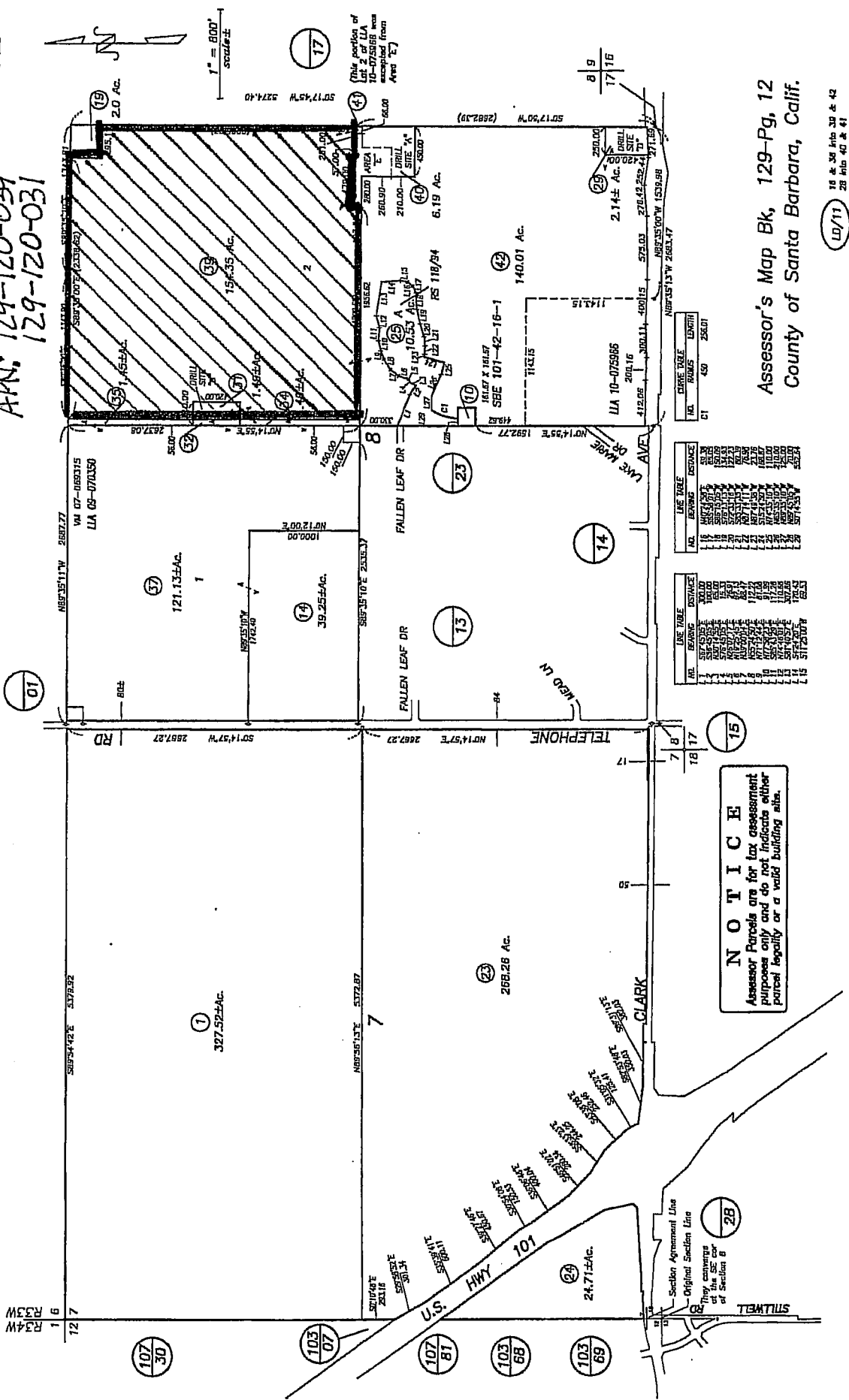
11/02/11

Tompkins New Ag Preserve Contract

11 AGP-00000-00018

SEC 7 & POR. SEC 8 T9N R33W SBB&M

APN: 129-120-039
129-12
129-120-031



NOTICE
Assessor's Parcels are for tax assessment purposes only and do not indicate either parcel legality or a valid building alias.

AL	BEARING	DISTANCE
1	N01°45'57"E	2887.27
2	N01°45'57"E	2887.27
3	N01°45'57"E	2887.27
4	N01°45'57"E	2887.27
5	N01°45'57"E	2887.27
6	N01°45'57"E	2887.27
7	N01°45'57"E	2887.27
8	N01°45'57"E	2887.27
9	N01°45'57"E	2887.27
10	N01°45'57"E	2887.27
11	N01°45'57"E	2887.27
12	N01°45'57"E	2887.27
13	N01°45'57"E	2887.27
14	N01°45'57"E	2887.27
15	N01°45'57"E	2887.27
16	N01°45'57"E	2887.27
17	N01°45'57"E	2887.27
18	N01°45'57"E	2887.27
19	N01°45'57"E	2887.27
20	N01°45'57"E	2887.27
21	N01°45'57"E	2887.27
22	N01°45'57"E	2887.27
23	N01°45'57"E	2887.27
24	N01°45'57"E	2887.27
25	N01°45'57"E	2887.27
26	N01°45'57"E	2887.27
27	N01°45'57"E	2887.27
28	N01°45'57"E	2887.27
29	N01°45'57"E	2887.27
30	N01°45'57"E	2887.27
31	N01°45'57"E	2887.27
32	N01°45'57"E	2887.27
33	N01°45'57"E	2887.27
34	N01°45'57"E	2887.27
35	N01°45'57"E	2887.27
36	N01°45'57"E	2887.27
37	N01°45'57"E	2887.27
38	N01°45'57"E	2887.27
39	N01°45'57"E	2887.27
40	N01°45'57"E	2887.27
41	N01°45'57"E	2887.27
42	N01°45'57"E	2887.27
43	N01°45'57"E	2887.27
44	N01°45'57"E	2887.27
45	N01°45'57"E	2887.27
46	N01°45'57"E	2887.27
47	N01°45'57"E	2887.27
48	N01°45'57"E	2887.27
49	N01°45'57"E	2887.27
50	N01°45'57"E	2887.27

AL	BEARING	DISTANCE
1	N01°45'57"E	2887.27
2	N01°45'57"E	2887.27
3	N01°45'57"E	2887.27
4	N01°45'57"E	2887.27
5	N01°45'57"E	2887.27
6	N01°45'57"E	2887.27
7	N01°45'57"E	2887.27
8	N01°45'57"E	2887.27
9	N01°45'57"E	2887.27
10	N01°45'57"E	2887.27
11	N01°45'57"E	2887.27
12	N01°45'57"E	2887.27
13	N01°45'57"E	2887.27
14	N01°45'57"E	2887.27
15	N01°45'57"E	2887.27
16	N01°45'57"E	2887.27
17	N01°45'57"E	2887.27
18	N01°45'57"E	2887.27
19	N01°45'57"E	2887.27
20	N01°45'57"E	2887.27
21	N01°45'57"E	2887.27
22	N01°45'57"E	2887.27
23	N01°45'57"E	2887.27
24	N01°45'57"E	2887.27
25	N01°45'57"E	2887.27
26	N01°45'57"E	2887.27
27	N01°45'57"E	2887.27
28	N01°45'57"E	2887.27
29	N01°45'57"E	2887.27
30	N01°45'57"E	2887.27
31	N01°45'57"E	2887.27
32	N01°45'57"E	2887.27
33	N01°45'57"E	2887.27
34	N01°45'57"E	2887.27
35	N01°45'57"E	2887.27
36	N01°45'57"E	2887.27
37	N01°45'57"E	2887.27
38	N01°45'57"E	2887.27
39	N01°45'57"E	2887.27
40	N01°45'57"E	2887.27
41	N01°45'57"E	2887.27
42	N01°45'57"E	2887.27
43	N01°45'57"E	2887.27
44	N01°45'57"E	2887.27
45	N01°45'57"E	2887.27
46	N01°45'57"E	2887.27
47	N01°45'57"E	2887.27
48	N01°45'57"E	2887.27
49	N01°45'57"E	2887.27
50	N01°45'57"E	2887.27

Assessor's Map Bk, 129-Pg, 12
County of Santa Barbara, Calif.

10/11 15 & 36 Hrs 30 & 42
28 Hrs 40 & 41