

# **SLO CULTIVATION - CARPINTERIA**

---

**3861 FOOTHILL ROAD, CARPINTERIA, CA**

**APN: 005-310-024**

## **WILDLIFE MOVEMENT PLAN**

*Prepared for:*

**SLO Cultivation, Inc.**  
3861 Foothill Road  
Carpinteria, CA 93103

**SCS Engineers**  
2370 Skyway Drive, Suite #101  
Santa Maria, CA 93455



**sage institute**

**Central Coast Office**  
1320 Van Beurden Drive, Suite 202-D4  
Los Osos, CA 93402  
Tel 805.434.2804 fax 805.980.5886

sage@sageii.com  
www.sageii.com

**October 8, 2021**

**TABLE OF CONTENTS**

**1.0 INTRODUCTION AND PURPOSE ..... 1**  
**2.0 WILDLIFE MOVEMENT FACTORS ..... 4**  
**2.1 NATIVE VEGETATION & STREAMBED..... 4**  
**2.2 PARTIAL RESTORATION OF ORCHARD AREA ..... 4**  
**3.0 RECOMMENDED AVOIDANCE AND MINIMIZATION MEASURES ..... 4**  
**4.0 CONCLUSIONS..... 5**  
**5.0 REFERENCES..... 6**

**APPENDIX A – EXHIBITS**

- Exhibit 1: Regional Location and CNDDDB Occurrences Map
- Exhibit 2: Aerial Overview
- Exhibit 3: Habitat Map

**APPENDIX B**

- Exhibit 4: Design Drawings/Landscape Plans

## 1.0 INTRODUCTION AND PURPOSE

SLO Cultivation, Inc. (Applicant), dba as Cresco California, requests approval of a Coastal Development Permit- With Hearing (CDH), Minor Conditional Use Permit, and a Revision to an existing Development Plan (10DVP-00000-00010) to authorize the development and operation of a cannabis cultivation facility (project) in an unincorporated portion of Santa Barbara County near the city of Carpinteria, California. The subject property (project site) is located at 3861 Foothill Road (APN: 005-310-024). This revised BRA has been prepared in response to the County’s peer review comment letter dated July 20, 2020.

The purpose of this Wildlife Movement Plan (WMP) is to document existing conditions of the project site and to evaluate the potential for any direct or indirect significant impacts to the movement of wildlife through the region. This report is intended to document satisfactory compliance with the *Santa Barbara County Article II Coastal Zoning Ordinance* land use permit process, and environmental review factors detailed in the *Cannabis Land Use Ordinance and Licensing Program, Final Environmental Impact Report (PEIR)*, Section 3.4 Biological Resources.

### 1.1 PROJECT LOCATION AND EXISTING CONDITIONS

The Project Site is located at 3861 Foothill Road (APN 005-310-024) in an unincorporated region of Santa Barbara County (County) approximately one (1) mile west of the City of Carpinteria and approximately seven (7) miles east of the City of Santa Barbara. The project site is located within the Agricultural I (AG-I-10) zone district within the First Supervisorial District. The project site is approximately 13.66 acres in size and is primarily accessed via a private driveway from Foothill Road. The Project Site is primarily level land (elevations ranging from approximately 55 to 75 feet above mean sea level). Surrounding land uses are predominantly agricultural operations including greenhouses, hoop houses, orchards, and annually cultivated fields. Low density residential development is interspersed mostly north of Foothill Road in this predominately agricultural area.

Arroyo Paredon Creek crosses the northern fringe of the parcel from east to west. The National Hydrography Dataset designates Arroyo Paredon Creek as a perennial stream less than 0.75 miles upstream of the site, and in the project area it is designated as intermittent. Based on field observations in July 2020, the reach of Arroyo Paredon Creek within the study area likely maintains minimal perennial flow in most years through the dry season. In dry / drought years, it is possible that flows would dissipate in the dry season.

The project site and associated existing greenhouses have been historically used to cultivate non-cannabis products such as cut flowers (gerbera daisies) and avocados. Since on or about October 2015 the project site has been used to cultivate cannabis. Primary access to the project site is provided via a shared access agreement with the adjacent property known as APN 005-310-021. The private access road is approximately 400 linear feet in length, 20 feet wide, and paved with asphalt.

The project site is composed of approximately 10.79 acres of developed uses including four (4) existing greenhouse structures and twelve (12) prefabricated supporting structures (containers used for agricultural storage and other supporting uses). The existing greenhouse structural development and associated agricultural uses were approved by the County via 10DVP-00000-00010 and 11CDP-00000-00009. The remainder of the project site is occupied by approximately 1.16 acres of fallow avocado orchard and agricultural materials stockpile. Outside the fenced project site but within the parcel is a

private road and 7-foot tall chain link security fence that separates approximately 0.48 acres of riparian canopy and channel associated with Arroyo Paredon Creek from the rest of the developed site.

The Exhibit 3 (Habitat Map) includes detailed mapping of all native trees south of the centerline of Arroyo Paredon Creek. Native trees within this area included coast live oak (*Quercus agrifolia*), California walnut (*Juglans hindsii*), and Western sycamore (*Platanus racemosa*). One native coast live oak tree is rooted south of the existing access road that separates the existing riparian corridor from proposed project activities.

A series of existing linear-shaped stormwater detention basins are located along the southeast and western property boundaries (See Exhibit 3). These basins are vegetated primarily by non-native weedy herbaceous forbs and grasses but do support some widely scattered mulefat and willow. Based on July 2020 field observations and discussions with onsite operations staff, these basins were designed for prior agricultural uses and do not ever support ponding.

Due to intensive agricultural, greenhouse, and residential development surrounding the proposed Project Site, wildlife movement proximal to the Project is restricted to the Arroyo Paredon watershed and its remaining native riparian corridor. As reflected in Figure 1 below, this movement corridor includes the northern fringes of the Project parcel.

**Figure 1- Arroyo Paredon Wildlife Movement Corridor**





## 1.2 PROJECT DESCRIPTION

The proposed Project would allow for:

1. Utilization of existing **Greenhouse 1 (GH1)**, approximately 264,500 square feet in size, for mature mixed-light cannabis cultivation.
2. Demolition of three (3) existing greenhouses, known as **Greenhouse 2 (GH2)**, **Greenhouse (GH3)**, and **Greenhouse 4 (GH4)**, which are approximately 40,700 square foot each.
3. Development and operation of a 61,840 square foot addition to **GH1** for nursery/juvenile mixed-light cannabis cultivation.
4. Development of a new 24,751 square foot pack house which will be utilized for cannabis processing (bucking, drying, and packaging).
5. The development of sixty-five (65) onsite parking spaces.
6. Expansion of the Project Site's stormwater detention basin system.
7. Minor ancillary improvements to the Project Site including installation of security cameras and lighting, installation and use of irrigation recycling and fertigation equipment, septic waste disposal systems, and placement of cannabis waste storage containers.
8. Removal of twelve (12) pre-fabricated containers, totaling 1,920 square feet, historically used for agricultural and cannabis support activities.

Site disturbance of non-developed areas and the corresponding potential for wildlife movement impacts is restricted to the proposed physical expansion of the site's existing storm water detention system and proposed landscape plan (Appendix C). All other proposed project elements consist of using existing structures, demolishing old structures and developing new structures in their previously disturbed footprint, or installing mechanical equipment in previously developed areas, thus no biological impacts are anticipated. In order to provide superior visual screening of the Project Site the existing avocado trees will be removed and the northern fence line will be planted with appropriate native riparian and transitional upland vegetation.

The timing of clearing the existing avocado orchard is proposed for a window between September 1<sup>st</sup> to February 1<sup>st</sup> that is outside the nesting season for birds. No work is proposed beyond the existing fence line and access road on the northern edge of the parcel. No disturbance or project related activities will occur in the Arroyo Paredon Creek riparian corridor and removal or pruning of native trees will not be required. Proposed maintenance within the basin area will be minimal and is anticipated to occur every 5 to 10 years, depending on annual rainfall and surface runoff amounts. These maintenance activities will include minor / as-needed sediment removal and vegetation trimming to ensure proper function of the basin(s).

## 2.0 WILDLIFE MOVEMENT FACTORS

### 2.1 NATIVE VEGETATION & STREAMBED

The Arroyo Paredon watershed and adjacent riparian vegetation encompass the northern 0.48 acres of the Project Parcel. The native area is bounded on the southern edge by an existing, paved access road which traverses the Project site from east to west. No Project related disturbance is proposed north of this access road. No grading disturbance will occur in proximity to or within the top-of-bank. No native trees will be removed or trimmed as part of the proposed scope of work. As a result, no wildlife movement impacts will occur as a result of impacts to the watershed or native vegetation as all such resources will remain intact and undisturbed. Movement through the existing riparian corridor may actually improve as the proposed Project would reduce noise and human activity in the existing avocado orchard immediately to the south. Native oaks within or in close proximity to construction activity will be protected in-place as further detailed in the project’s Tree Protection Plan (TPP).

### 2.2 PARTIAL RESTORATION OF ORCHARD AREA

The proposed Project includes the removal of approximately 1.41 acres of avocado orchard, and the installation of a native plant pallet along the existing northern fence line including: coast live oak (*quercus agrifolia*), creeping wild rye (*elymus triticoides*), mulefat (*baccharis salicifolia*), coffee berry (*frangula californica*), toyon (*heteromeles arbutifolia*), and California field sedge (*carex praegracius*). This would result in a net benefit to the potential for wildlife movement in the area as avocado orchard and its associated human activity will be displaced by the native plant species.

## 3.0 RECOMMENDED AVOIDANCE AND MINIMIZATION MEASURES

- 1) **Landscape Restoration:** Implement the proposed landscape improvements, including use of native species restoration, in conformance with the proposed Landscape Plans as included in Exhibit 5 of this Report.
- 2) **Tailgate Education Training:** To ensure all onsite workers are aware of potential special-status species associated with Arroyo Paredon Creek, a County-approved biologist shall provide a tailgate education training session for all onsite workers. The purpose of this training shall be to familiarize all workers with the potential biological resources occurring onsite and required avoidance and minimization measures. Penalties and procedures for non-compliance will also be reviewed. All training recipients will be required to sign-in documenting they have attended the training, and a copy of the sign-in sheet will be provided to the County.
- 3) **Construction Monitoring:** All ground disturbance and vegetation clearing activities shall be conducted under the direct supervision of the County-approved biologist. The monitoring biologist will work with construction crews to slowly remove any debris piles or potential upland refuge habitat (by hand or gentle excavation) for special-status wildlife species.
- 4) **Post-construction Monitoring Report:** A post-construction monitoring report will be provided to the County detailing any unintended impacts to native trees or other biological resources during construction and any additional mitigation measures implemented at the direction of the authorized biologist.

- 5) **Special-status Wildlife Pre-construction Surveys:** Within 48 hours of initial disturbance activities, the authorized biologist shall conduct a pre-construction survey in all upland areas of the site and within Arroyo Paredon Creek for the purposes of identifying any CRLF, two-striped garter snake, steelhead, or other special-status species that may be present within or adjacent to project activities. Special focus shall be taken in potential upland refuges such as debris piles. The County-approved monitoring biologist shall move out of harm's way any non-listed wildlife species encountered during initial ground disturbing activities to the extent feasible.
- 6) **Detention Basin Maintenance:** The timing of detention basin maintenance shall be limited to between September 1<sup>st</sup> to February 1<sup>st</sup> to ensure activities occur outside the nesting season for birds. If deemed to be required by the County, the applicant shall submit a Habitat Protection Plan for county review and approval at a minimum of 60 days prior to initiating any maintenance activity.

## 4.0 CONCLUSIONS

In conclusion, based on the findings described above establishing the existing conditions of biological resources within the Project parcel and applicant proposed site modifications for native plant restoration and fencing modifications; the implementation of the Project should positively benefit wildlife movement in the region. As such, direct and indirect project impacts on biological resources would be at a less than significant level as follows:

- The small project site of 1.16-acres of fallow orchard habitat only impacts avocado trees and ruderal species in an historical agricultural setting from pre-existing man-made disturbance.
- Avoidance and minimization measures have been proposed to ensure no direct impacts occur to special-status species or natural communities of special concern.
- Project timing avoids impacts on nesting/breeding behaviors of resident and migratory birds.

## 5.0 REFERENCES

- 1) Baldwin, B. G., D. H. Goldman, D. J. Keil, R. Patterson, T.J. Rosatti, Ed. 2012. *The Jepson Manual, Vascular Plants of California, Second Edition Thoroughly Revised and Expanded*. University of California Press.
- 2) Calflora: Information on California plants for education, research and conservation. [web 8 application]. 2012. Berkeley, California: The Calflora Database (a non-profit 9 organization). Available: <http://www.calflora.org/>. Accessed: November 2018.
- 3) Cal-IPC. 2006. California Invasive Plant Inventory. Cal-IPC Publication 2006-02. California Invasive Plant Council: Berkeley, CA. Available: [www.cal-ipc.org](http://www.cal-ipc.org)
- 4) Mayer, W. and W. Laudenslayer, Editors. 1988. *A Guide to Wildlife Habitats of California*. California Department of Forestry and Fire Protection.
- 5) Santa Barbara County Planning and Development. 2008. *Environmental Thresholds and Guidelines Manual*. Revised September 2008, Published October 2008.
- 6) Santa Barbara County. 2017. Cannabis Land Use Ordinance and licensing Program, Final Environmental Impact Report. Section 3.4 Biological Resources. December 2017.
- 7) Santa Barbara County. 2019. Santa Barbara County Article II Coastal Zoning Ordinance. Updated June 2019
- 8) Sawyer, J. O., T. Keeler-Wolf, and J.M. Evens. 2009. *A Manual of California Vegetation, 2nd Edition*. California Native Plant Society, Sacramento, CA.
- 9) Sawyer, J. & T. Keeler-Wolf. 1995. *A Manual of California Vegetation*. Web version provided by the California Native Plant Society.

# APPENDIX A

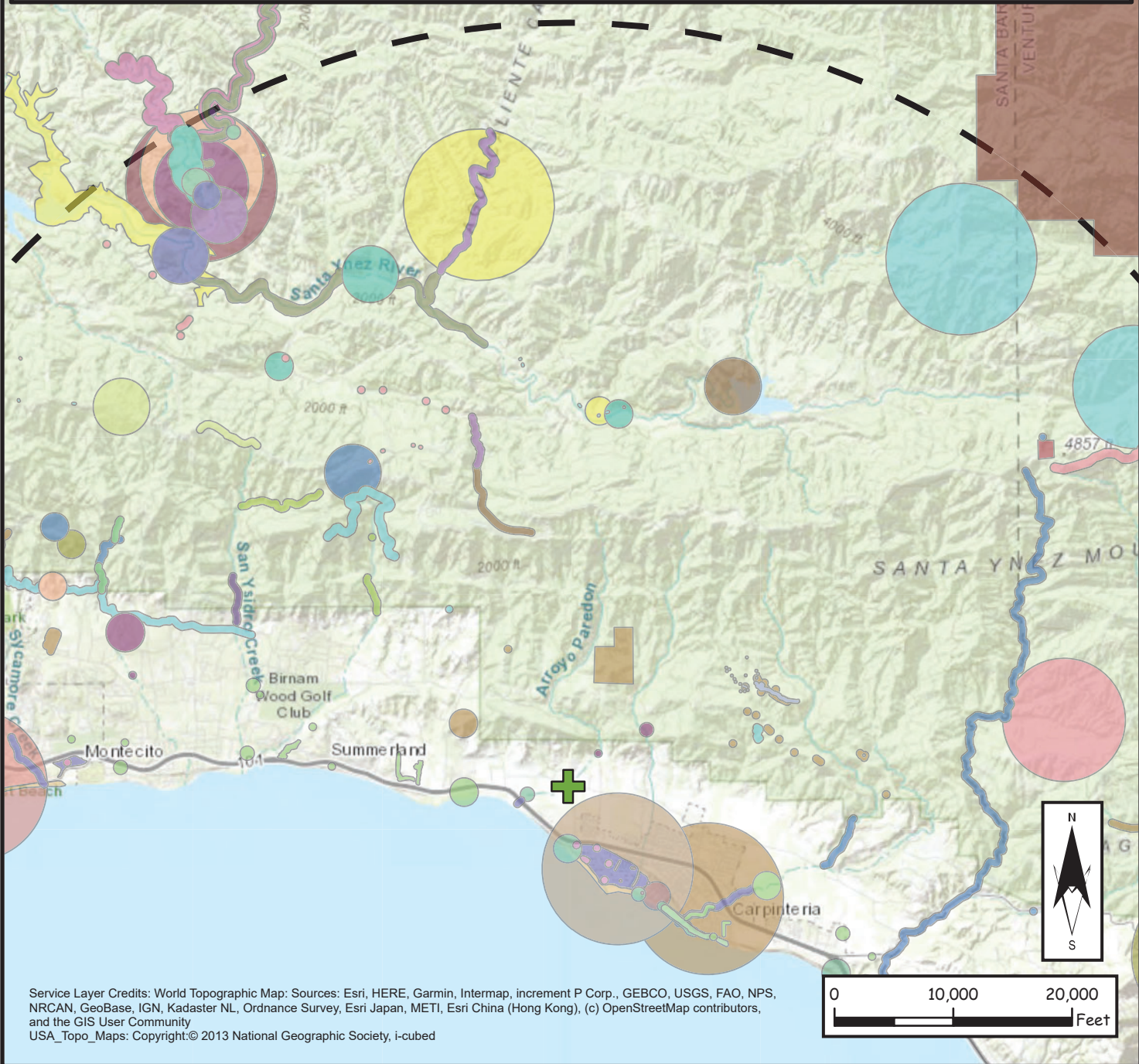
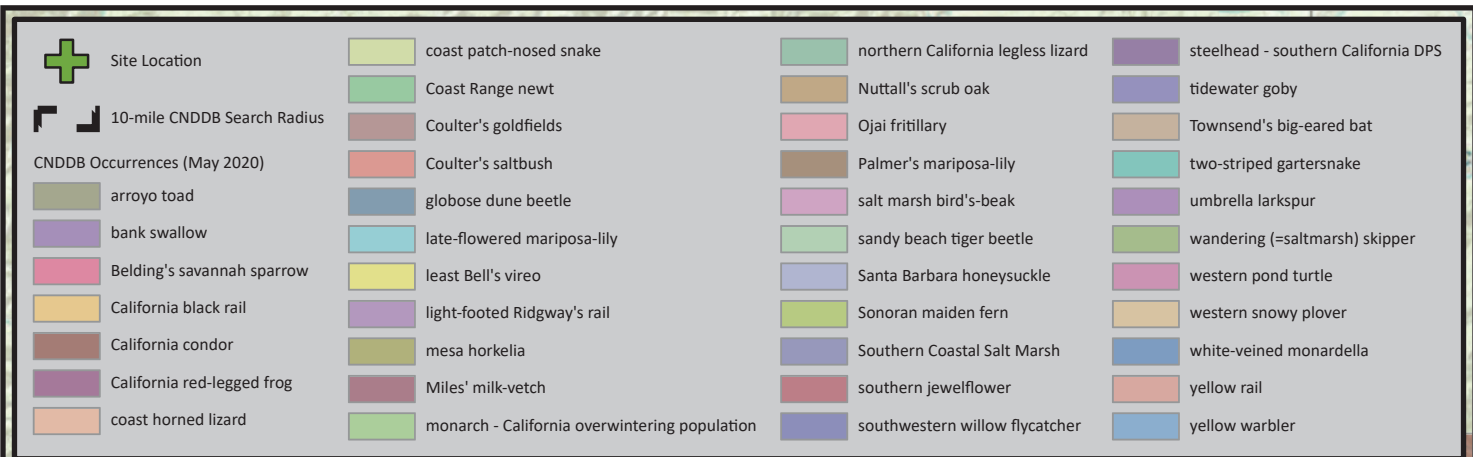
---

Exhibit 1: Regional Location and CNDDDB Occurrences Map

Exhibit 2: Aerial Overview

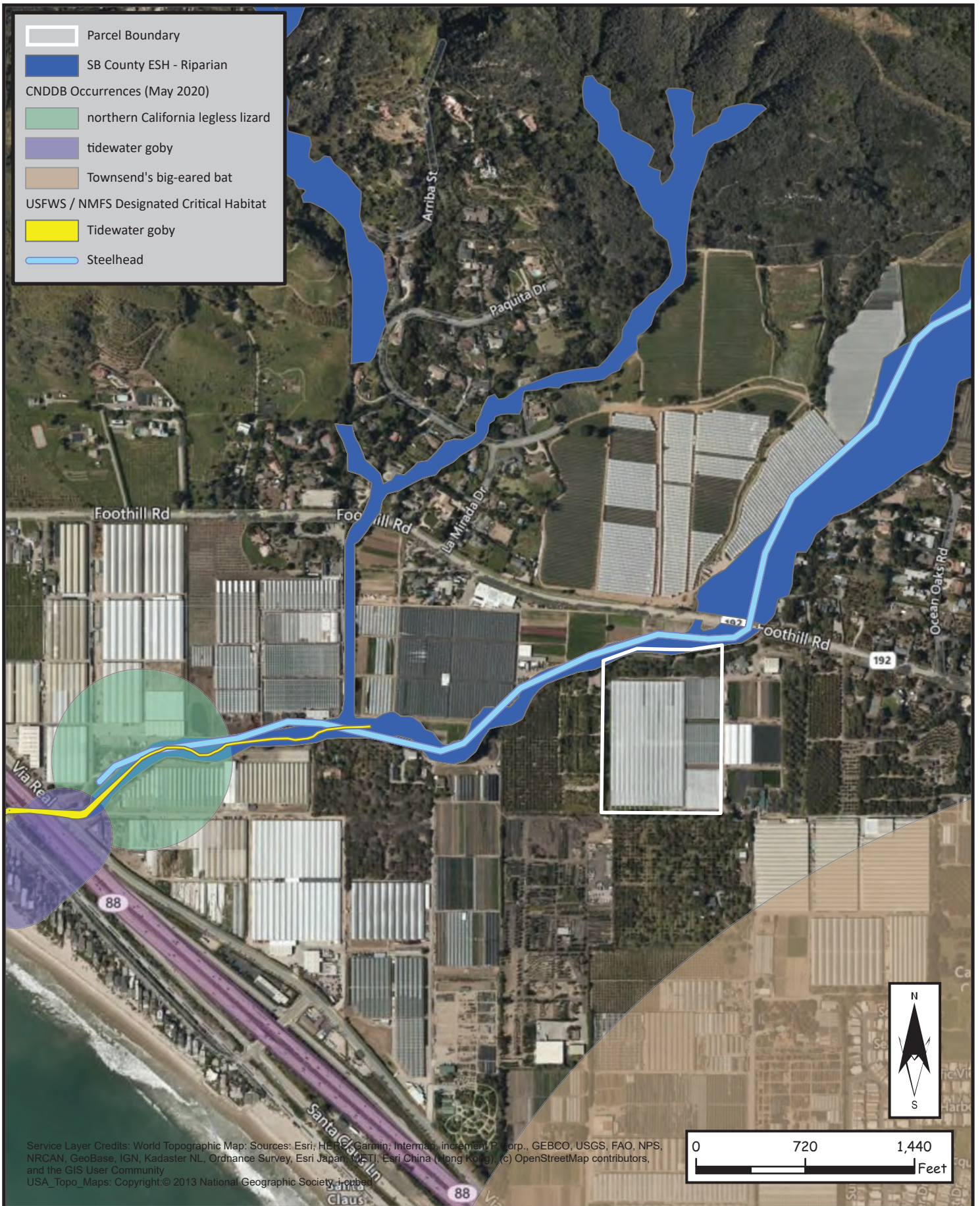
Exhibit 3: Revised Habitat Map (July 2020)



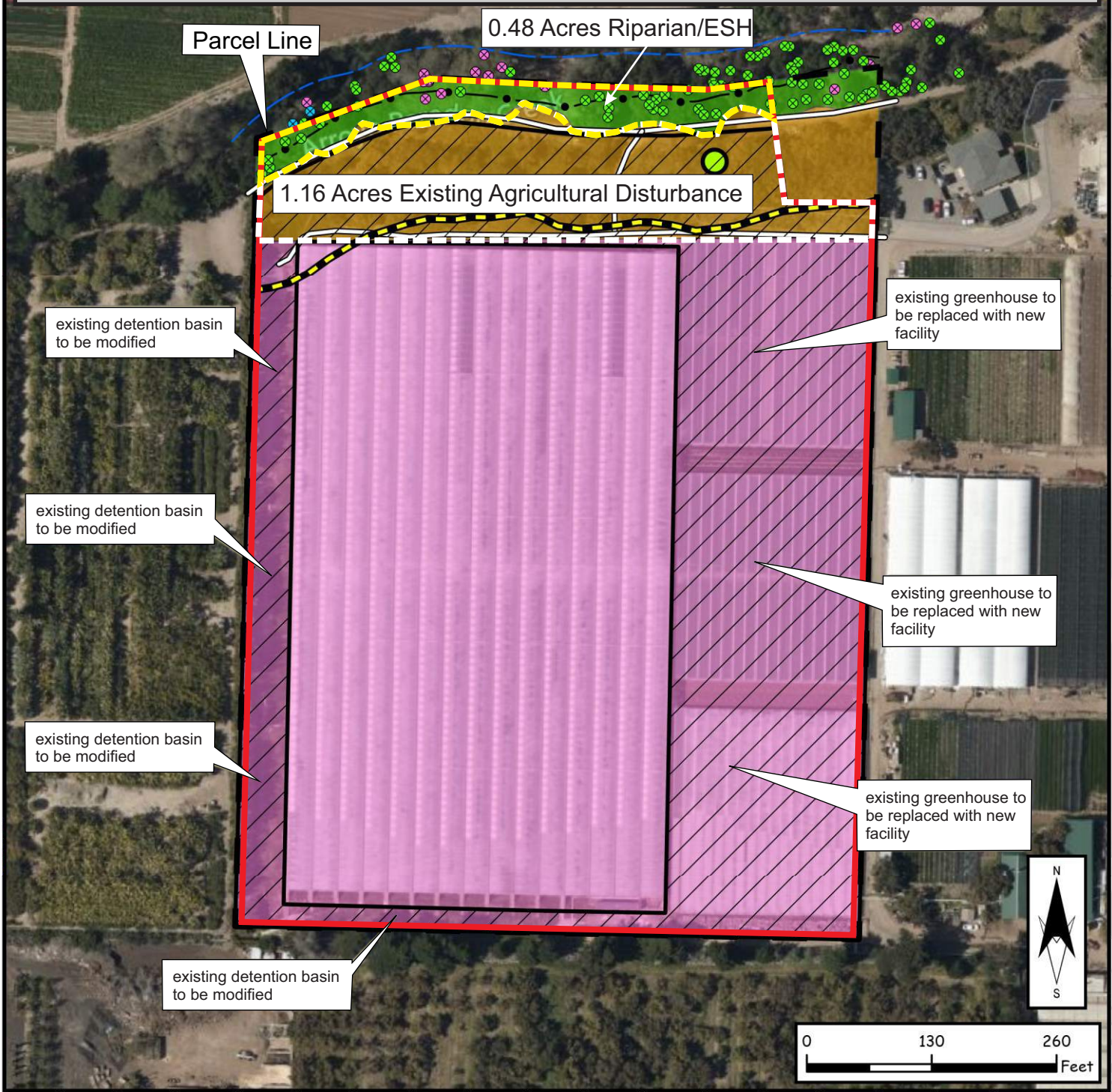
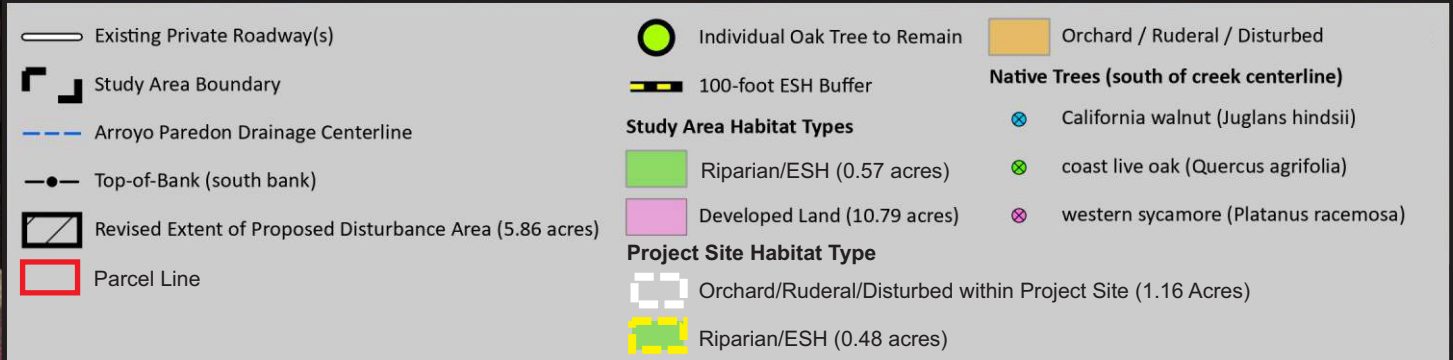


Service Layer Credits: World Topographic Map: Sources: Esri, HERE, Garmin, Intermap, increment P Corp., GEBCO, USGS, FAO, NPS, NRCAN, GeoBase, IGN, Kadaster NL, Ordnance Survey, Esri Japan, METI, Esri China (Hong Kong), (c) OpenStreetMap contributors, and the GIS User Community  
 USA\_Topo\_Maps: Copyright © 2013 National Geographic Society, i-cubed







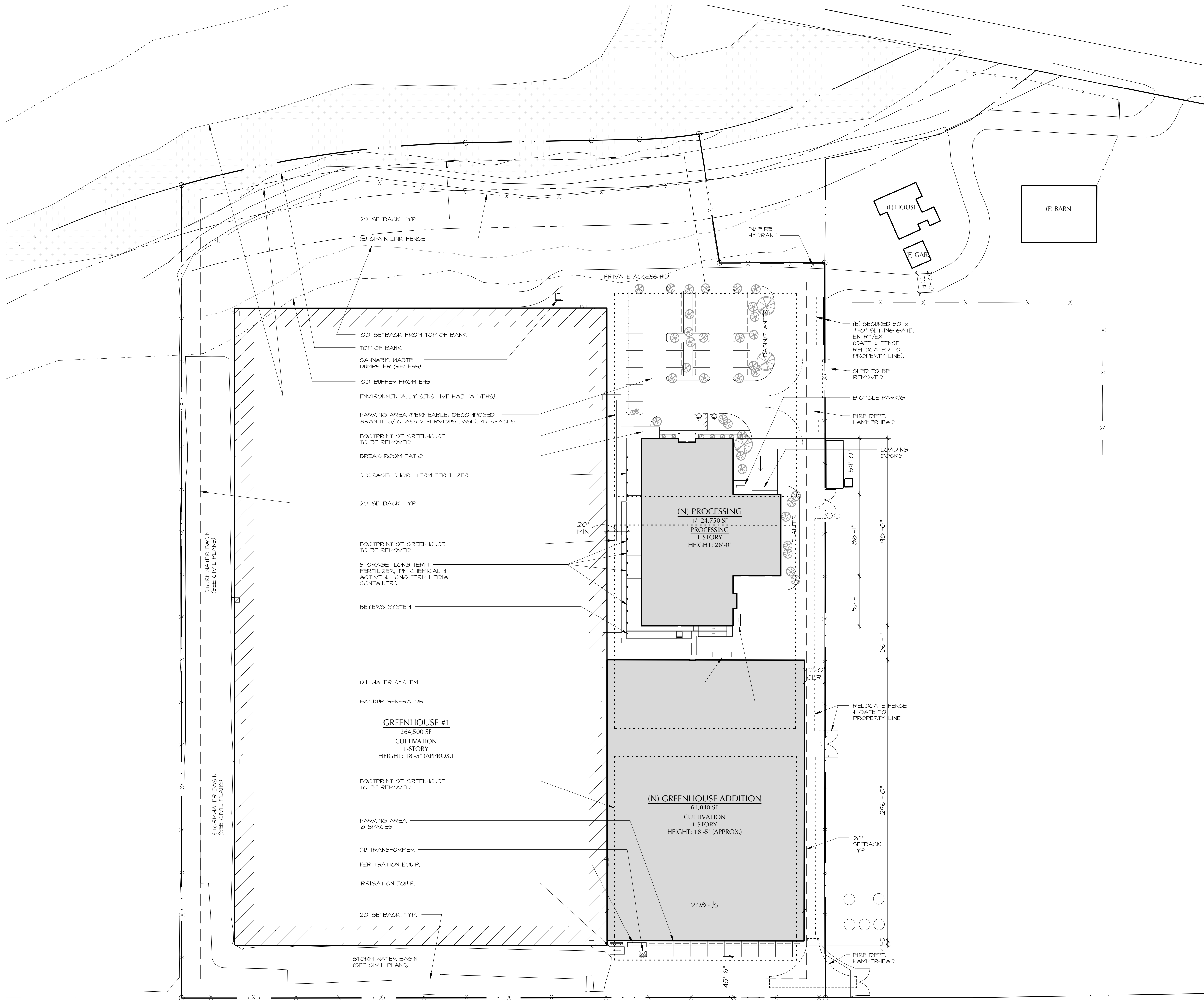


# APPENDIX B

---

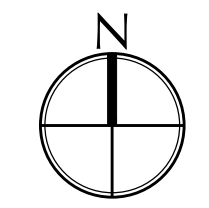
## Exhibit 5: Design Documents/Landscape Plans





**SITE PLAN**

1"=50'



**SITE PLAN GENERAL NOTES:**

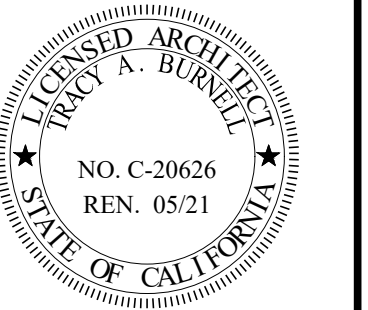
1. This plan is for architectural reference. See civil plans for specific grading and drainage information.
2. Positive drainage shall be provided away from the structure at a minimum slope of 5% for 10 feet.
3. Contractor shall verify location of all underground utilities prior to excavation.
4. Rain gutters and downspouts shall collect and discharge roof rain water run-off through an approved storm drain system. See civil plans for additional information.
5. Verify depth & separation of utilities within trenches w/ governing jurisdiction and comply w/ all applicable codes. Architect to be notified of any conflicts.



ARCHITECTURE

924 anacapa st  
suite: 2-U  
santa barbara, ca  
93101  
805.564.6074

**SLO CULTIVATION**  
3861 Foothill Rd  
Carpinteria, CA

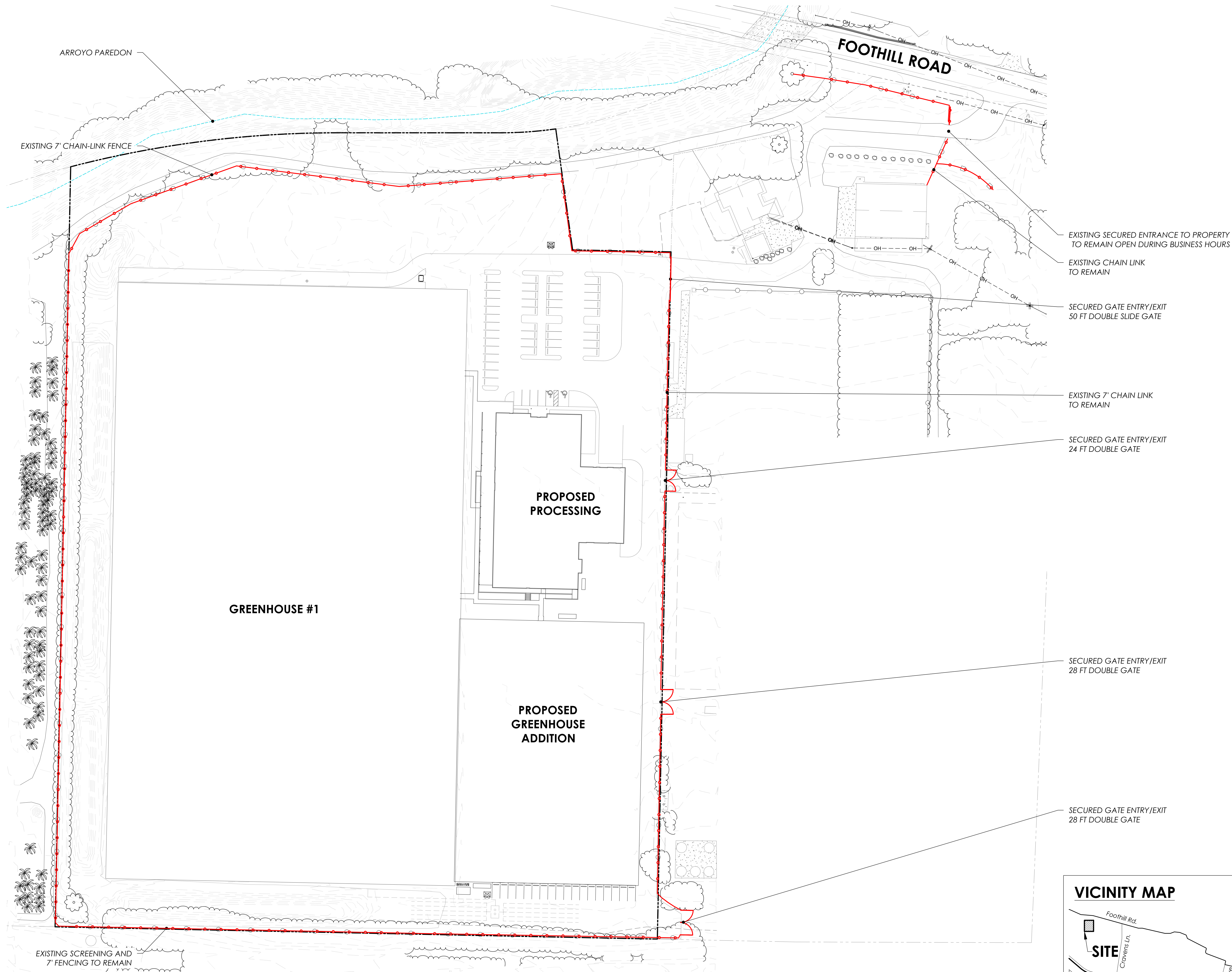


sheet description  
SITE PLAN

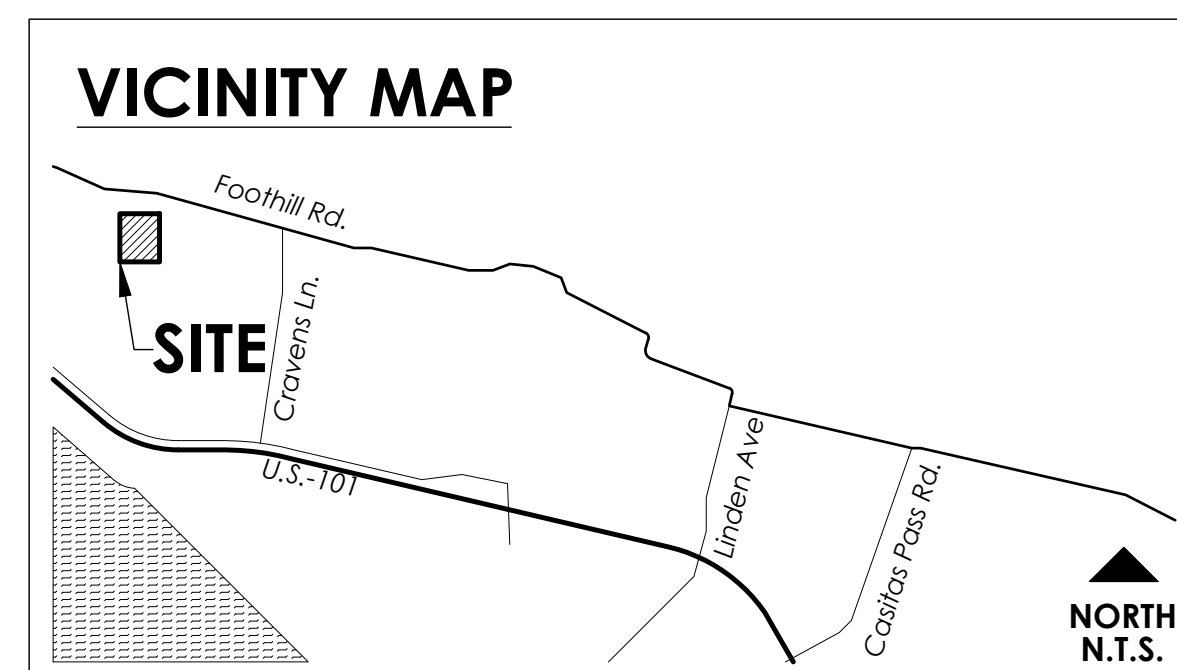
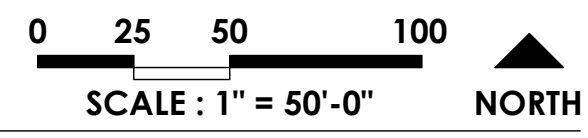
- date:**
- 8-7-2020
  - 8-20-2020
  - 8-28-2020
  - 9-3-2020
  - 9-9-2020
  - 9-17-2020
  - 12-9-2020
  - 12-18-2020
  - 12-29-2020
  - 1-13-2021
  - 2-3-2021
  - 2-9-2021
  - 2-10-2021
  - 2-18-2021
  - 4-27-2021
  - 6-1-2021
  - 7-6-2021
  - 9-15-2021
  - 10-1-2021

sheet no:  
**A-1**





**FENCING & SECURITY PLAN**



**SLO CULTIVATION**

3889 FOOTHILL ROAD // CARPINTERIA, CALIFORNIA 93013

**SHEET TITLE**  
**FENCING & SECURITY PLAN**

**OWNER** Cresco California  
P.O. Box 183  
Carpinteria, California 93014

**DATE** 2021.10.12  
21839

**SHEET NO.**

**L-1.0**

\\pleinaire\420\pleinaire Shared\Drawing File\SCS Traer\Corp Cannabis\GH7\landscape\Conceptual\SLO Cultivation.dwg, 10/12/2021 3:26:36 PM



**TREE SURVEY**

Client: SLO Cultivation

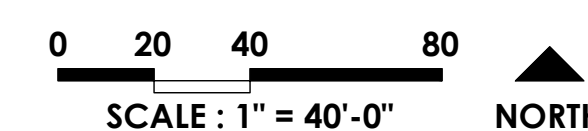
Date: 15-Aug-19  
Rev. Date 1: 21-Apr-20  
Rev. Date 2: 14-Jan-21

[1] Remain  
[2] Remove  
[3] Prune  
[4] Dead  
[5] Replace

Tree #	Species	Common Name	Canopy	Disposition	Notes
1	Persea Americana	Avocado Tree	Grid	2	Remove for new detention basin
2	Persea Americana	Avocado Tree	Grid	2	Remove for new detention basin
3	Persea Americana	Avocado Tree	Grid	2	Remove for new detention basin
4	Persea Americana	Avocado Tree	Grid	2	Remove for new detention basin
5	Persea Americana	Avocado Tree	Grid	2	Remove for new detention basin
6	Persea Americana	Avocado Tree	Grid	2	Remove for new detention basin
7	Persea Americana	Avocado Tree	Grid	2	Remove for new detention basin
8	Persea Americana	Avocado Tree	Grid	2	Remove for new detention basin
9	Persea Americana	Avocado Tree	Grid	2	Remove for new detention basin
10	Persea Americana	Avocado Tree	Grid	2	Remove for new detention basin
11	Persea Americana	Avocado Tree	Grid	2	Remove for new detention basin
12	Persea Americana	Avocado Tree	Grid	2	Remove for new detention basin
13	Persea Americana	Avocado Tree	Grid	2	Remove for new detention basin
14	Persea Americana	Avocado Tree	Grid	2	Remove for new detention basin
15	Persea Americana	Avocado Tree	Grid	2	Remove for new detention basin
16	Persea Americana	Avocado Tree	Grid	2	Remove for new detention basin
17	Persea Americana	Avocado Tree	Grid	2	Remove for new detention basin
18	Persea Americana	Avocado Tree	Grid	2	Remove for new detention basin
19	Persea Americana	Avocado Tree	Grid	2	Remove for new detention basin
20	Persea Americana	Avocado Tree	Grid	2	Remove for new detention basin
21	Persea Americana	Avocado Tree	Grid	2	Remove for new detention basin
22	Persea Americana	Avocado Tree	Grid	2	Remove for new detention basin
23	Persea Americana	Avocado Tree	Grid	2	Remove for new detention basin
24	Persea Americana	Avocado Tree	Grid	2	Remove for new detention basin
25	Persea Americana	Avocado Tree	Grid	2	Remove for new detention basin
26	Persea Americana	Avocado Tree	Grid	2	Remove for new detention basin
27	Persea Americana	Avocado Tree	Grid	2	Remove for new detention basin
28	Persea Americana	Avocado Tree	Grid	2	Remove for new detention basin
29	Persea Americana	Avocado Tree	Grid	2	Remove for new detention basin
30	Persea Americana	Avocado Tree	Grid	2	Remove for new detention basin
31	Persea Americana	Avocado Tree	Grid	2	Remove for new detention basin
32	Persea Americana	Avocado Tree	Grid	2	Remove for new detention basin
33	Persea Americana	Avocado Tree	Grid	2	Remove for new detention basin
34	Persea Americana	Avocado Tree	Grid	2	Remove for new detention basin
35	Persea Americana	Avocado Tree	Grid	2	Remove for new detention basin
36	Persea Americana	Avocado Tree	Grid	2	Remove for new detention basin
37	Persea Americana	Avocado Tree	Grid	2	Remove for new detention basin
38	Persea Americana	Avocado Tree	Grid	2	Remove for new detention basin
39	Persea Americana	Avocado Tree	Grid	2	Remove for new detention basin
40	Persea Americana	Avocado Tree	Grid	2	Remove for new detention basin
41	Persea Americana	Avocado Tree	Grid	2	Remove for new detention basin
42	Persea Americana	Avocado Tree	Grid	1	In adjacent parcel
43	Persea Americana	Avocado Tree	Grid	1	In adjacent parcel
44	Persea Americana	Avocado Tree	Grid	1	In adjacent parcel
45	Persea Americana	Avocado Tree	Grid	1	In adjacent parcel
46	Persea Americana	Avocado Tree	Grid	1	In adjacent parcel
47	Persea Americana	Avocado Tree	Grid	1	In adjacent parcel
48	Persea Americana	Avocado Tree	Grid	1	In adjacent parcel
49	Persea Americana	Avocado Tree	Grid	1	In adjacent parcel
50	Persea Americana	Avocado Tree	Grid	1	In adjacent parcel
51	Persea Americana	Avocado Tree	Grid	1	In adjacent parcel
52	Persea Americana	Avocado Tree	Grid	1	In adjacent parcel
53	Persea Americana	Avocado Tree	Grid	1	In adjacent parcel
54	Persea Americana	Avocado Tree	Grid	1	In adjacent parcel
55	Persea Americana	Avocado Tree	Grid	1	In adjacent parcel
56	Persea Americana	Avocado Tree	Grid	1	In adjacent parcel
57	Persea Americana	Avocado Tree	Grid	1	In adjacent parcel
58	Persea Americana	Avocado Tree	Grid	1	In adjacent parcel



**TREE INVENTORY PLAN**



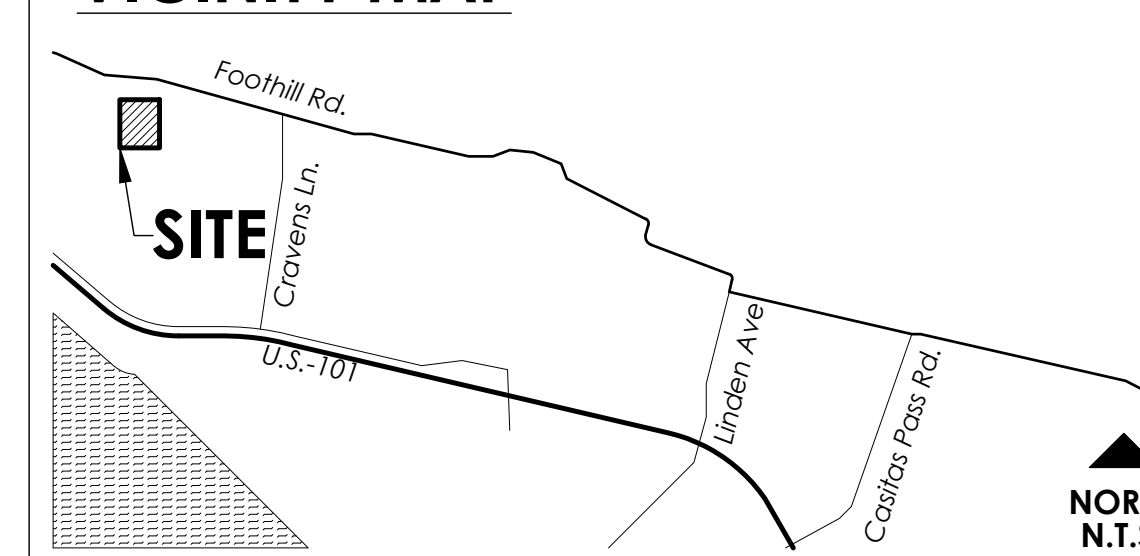
**TREE INVENTORY LEGEND**

SYMBOL	NAME
	EXISTING TREE CANOPY
	EXISTING TREE CANOPY TO BE REMOVED
	TREE TRUNK

**NOTE:**

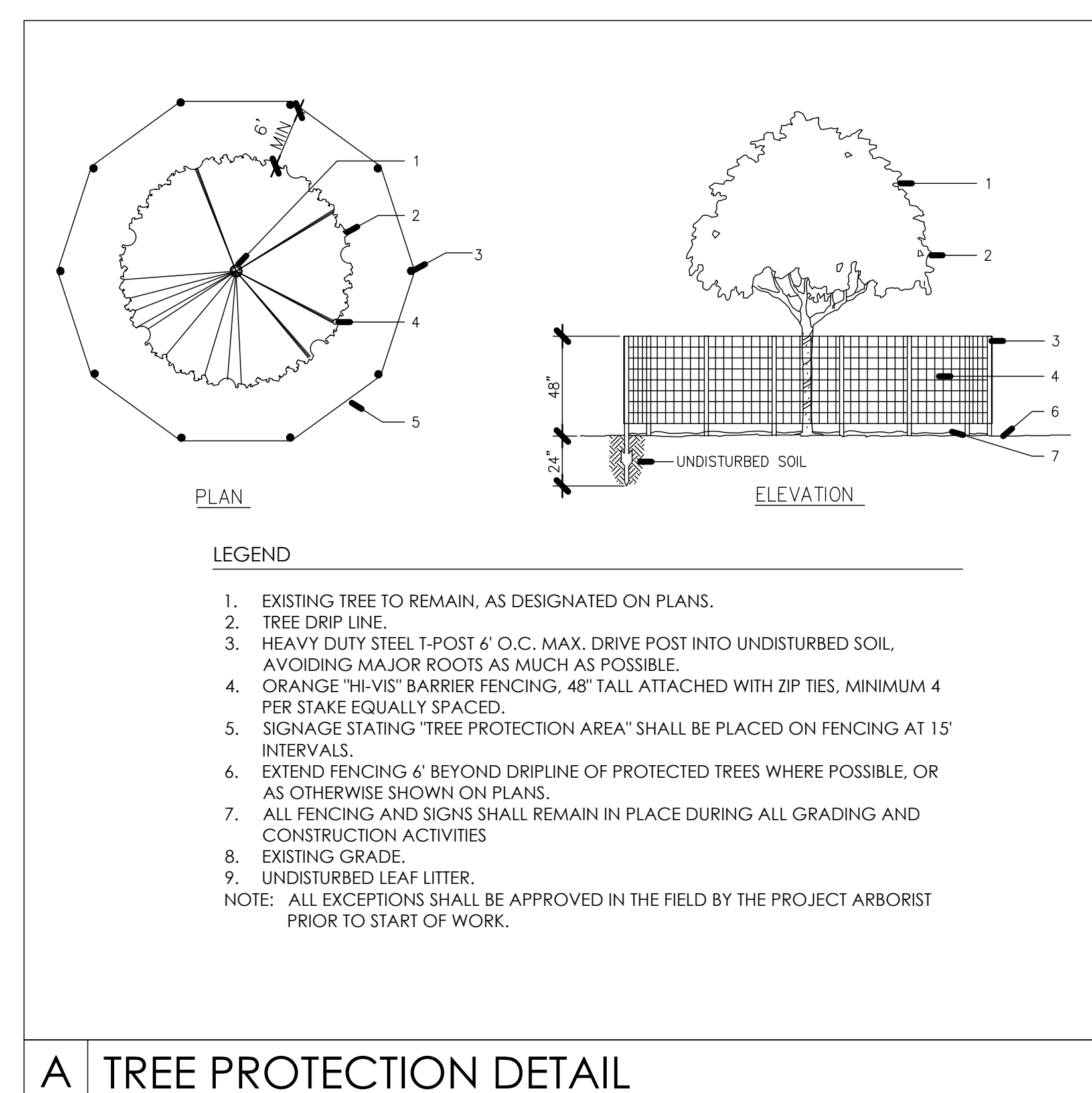
GRADING AND SITE DISTURBANCE SHALL REMAIN AT LEAST 6 FEET OUTSIDE OF THE EXISTING OAK'S DRIPLINE WHENEVER FEASIBLE. IF GRADING MUST ENCROACH WITHIN THAT PROTECTED AREA, ALL SUCH WORK SHALL BE CONDUCTED UNDER THE SUPERVISION OF THE LANDSCAPE ARCHITECT/ARBORIST

**VICINITY MAP**



**TREE PROTECTION NOTES**

- PRIOR TO PRE-CONSTRUCTION MEETING, BEGINNING OF GRADING, AND DURING ALL GROUND DISTURBANCE AND CONSTRUCTION ACTIVITIES, TEMPORARY ORANGE PLASTIC FENCING SHALL BE INSTALLED AT THE DRIP LINE OF ALL TREES IN ORDER TO CONTROL ACCESS AND DELINEATE AREAS OF NON-DISTURBANCE. FINAL LOCATION OF FENCING TO BE DETERMINED IN FIELD BY LANDSCAPE ARCHITECT.
- ANY NECESSARY PRUNING SHALL BE IN ACCORDANCE TO THE MOST CURRENT INTERNATIONAL SOCIETY OF ARBORICULTURE PRUNING STANDARDS UNDER THE SUPERVISION OF A CERTIFIED ARBORIST.
- PRIOR TO BEGINNING WORK OR ANY EXCAVATION, THE CONTRACTOR SHALL CONTACT UNDERGROUND SERVICE ALERT AT (800) 442-4133.
- REMOVAL OF WEEDS WITHIN THE DRIP LINE OF THE TREES SHALL BE DONE BY HAND OR BY USE OF A CONTACT HERBICIDE ONLY.
- NO CONSTRUCTION, STORAGE OF MATERIALS, AND/OR PARKING OF VEHICLES SHALL BE PERMITTED WITHIN THE DRIP LINE OF EXISTING TREES.
- NO GRADING SHALL OCCUR WITHIN THE DRIP LINE OF EXISTING TREES EXCEPT AS REQUIRED WITHIN DESIGNATED AREA OF ENCROACHMENT AND UNDER THE SUPERVISION OF THE PROJECT ARBORIST.
- IF UTILITY INSTALLATION MUST OCCUR WITHIN THE DRIP LINE OF ANY OF EXISTING TREES, THEN THE FOLLOWING PRECAUTIONS MUST BE OBSERVED AND PERFORMED UNDER THE SUPERVISION OF THE PROJECT ARBORIST:
  - WHERE IT IS NECESSARY TO EXCAVATE ADJACENT TO EXISTING TREES, THE CONTRACTOR SHALL USE ALL POSSIBLE CARE TO AVOID INJURY TO TREES AND TREE ROOTS.
  - EXCAVATION IN THESE AREAS WHERE TWO (2) INCH AND LARGER ROOTS OCCUR SHALL BE DONE BY HAND.
  - ALL ROOTS LESS THAN TWO (2) INCHES IN DIAMETER, DIRECTLY IN THE PATH OF THE PIPE OR CONDUIT, SHALL BE CLEANLY CUT UNDER THE DIRECTION OF AN APPROVED ARBORIST.
  - ALL ROOTS TWO (2) INCHES AND LARGER IN DIAMETER, EXCEPT DIRECTLY IN THE PATH OF PIPE OR CONDUIT, SHALL BE TUNNELED UNDER AND SHALL BE HEAVILY WRAPPED WITH BURLAP TO PREVENT SCARRING OR EXCESSIVE DRYING.
  - ROOTS ONE (1) INCH AND LARGER IN DIAMETER REQUIRING CUTTING SHALL BE PAINTED WITH TWO COATS OF TREE SEAL OR EQUAL.
  - WHERE A DITCHING MACHINE IS RUN CLOSE TO TREES HAVING ROOTS SMALLER THAN TWO (2) INCHES IN DIAMETER, THE WALL OF THE TRENCH ADJACENT TO TREES SHALL BE HAND TRIMMED, MAKING CLEAN CUTS THROUGH.
  - TRENCHES ADJACENT TO TREES SHOULD BE CLOSED WITHIN TWENTY FOUR (24) HOURS AND WHERE NOT POSSIBLE, THE SIDE OF THE TRENCH ADJACENT TO THE TREES SHALL BE KEPT SHADED WITH BURLAP OR CANVAS.
- ANY DISCREPANCIES AND/OR QUESTIONS THAT MAY ARISE ON SITE REGARDING EXISTING TREES SHALL BE REFERRED TO THE PROJECT ARBORIST.
- ALL EXISTING SHRUBBERY AND GROUND COVER SHALL BE REMOVED WHERE NECESSARY FOR CONSTRUCTION PURPOSES UNLESS OTHERWISE NOTED TO REMAIN.
- ALL DOWNED WOOD AND UPROOTED STUMPS SHALL BE REMOVED AS PART OF THE SITE CLEAN UP. CONTRACTOR SHALL LEAVE EXISTING LEAF MULCH IN PLACE AS MUCH AS POSSIBLE.
- TREES SHALL BE PROTECTED IN PLACE TO THE GREATEST EXTENT POSSIBLE. ALL TREES LOCATED WITHIN TWENTY FIVE (25) FEET OF PROPOSED BUILDINGS SHALL BE PROTECTED FROM STUCCO OR PAINT DURING CONSTRUCTION.
- ANY PRUNING TO BE SUPERVISED BY PROJECT ARBORIST.



**A TREE PROTECTION DETAIL**

SHEET TITLE

**TREE INVENTORY PLAN**

OWNER Cresco California  
P.O. Box 183  
Carpinteria, California 93014

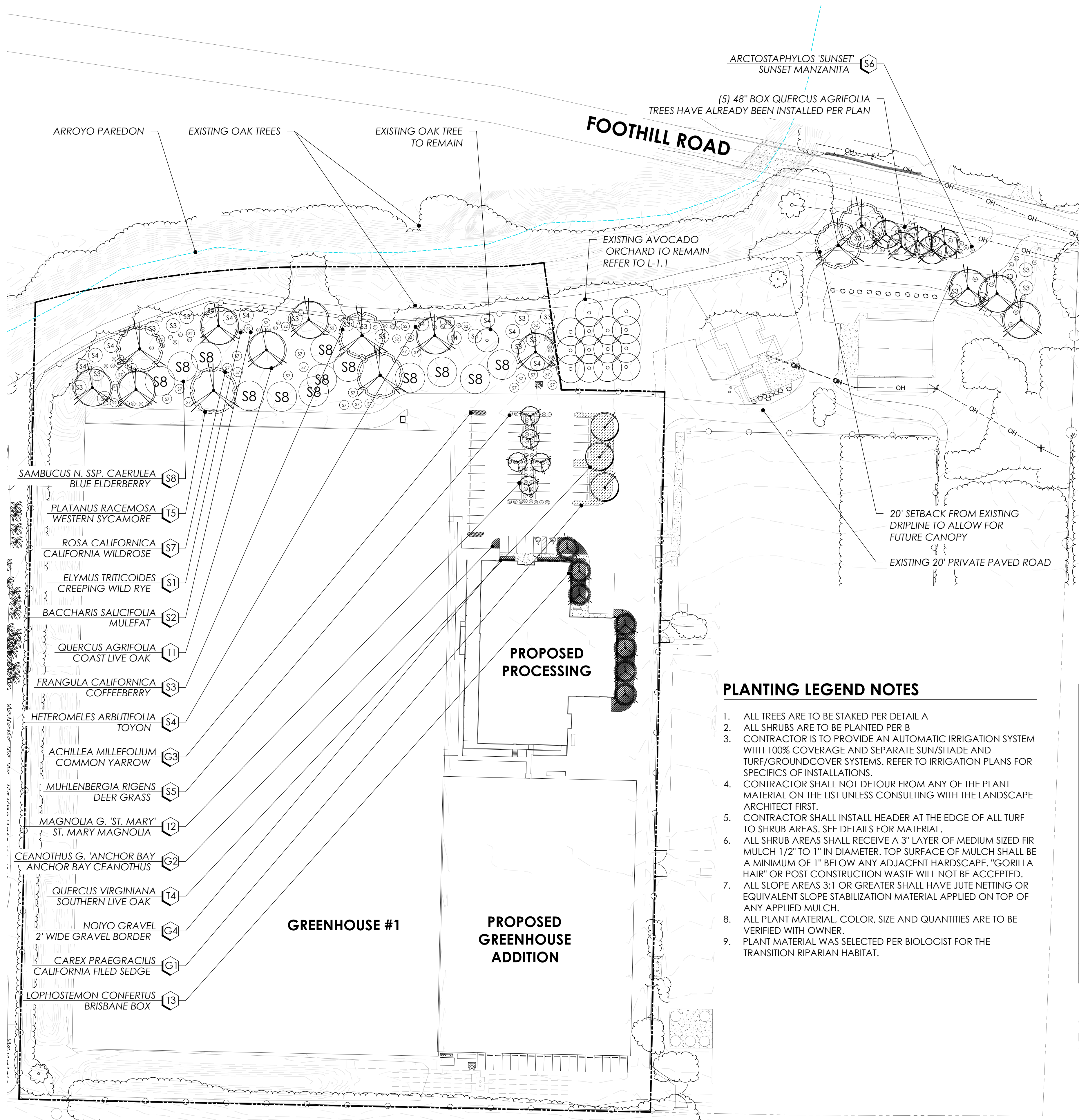
DATE 2021.10.12  
21839

SHEET NO.

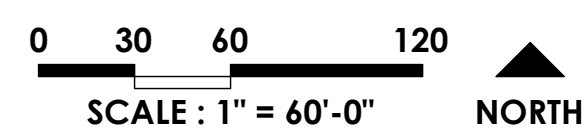
**L-1.1**

NORTH  
N.T.S.





**LANDSCAPE SCREENING PLAN - DETENTION BASIN ENLARGEMENT**



**PLANT LEGEND**

**TREES**

SYMBOL	NAME	COMMENTS	SIZE	WUCOLS	QTY.
T1	QUERCUS AGRIFOLIA COAST LIVE OAK	PLANT PER DETAIL A	48" BOX	V. LOW	15
T2	MAGNOLIA GRANDIFLORA 'ST. MARY' ST. MARY MAGNOLIA	PLANT PER DETAIL A	24" BOX	MED	5
T3	LOPHOSTEMON CONFERTUS BRISBANE BOX	PLANT PER DETAIL A	36" BOX	MED	7
T4	QUERCUS VIRGINIANA SOUTHERN LIVE OAK	PLANT PER DETAIL A	36" BOX	MED	3
T5	PLATANUS RACEMOSA WESTERN SYCAMORE	PLANT PER DETAIL A REFER TO PLANT LEGEND NOTE #9	36" BOX	MED	6

**SHRUBS**

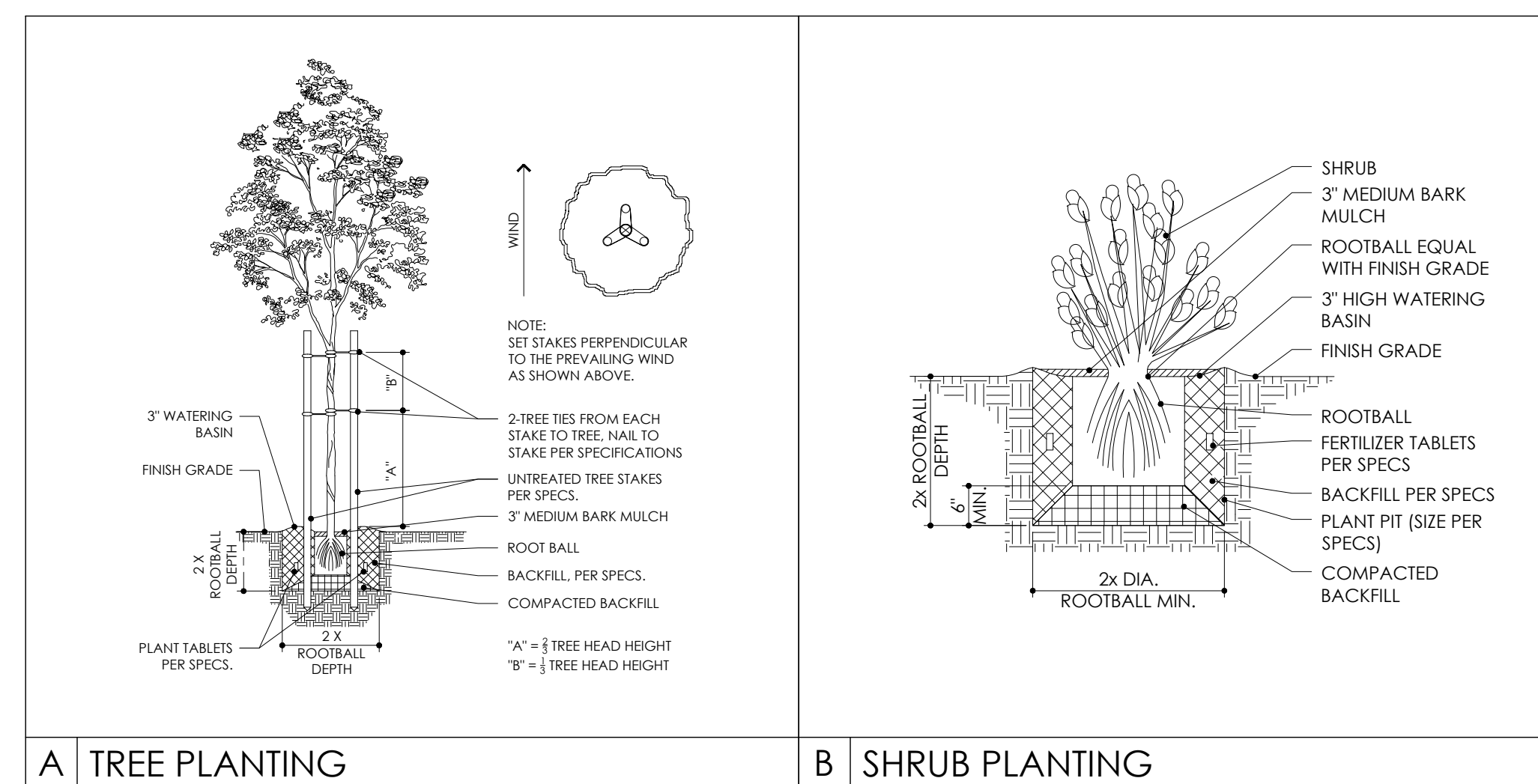
SYMBOL	NAME	COMMENTS	SIZE	WUCOLS	QTY.
S1	ELYMUS TRITICOIDES CREEPING WILD RYE	PLANT PER DETAIL B	1 GAL.	LOW	38
S2	BACCHARIS SALICIFOLIA MULEFAT	PLANT PER DETAIL B	1 GAL.	LOW	15
S3	FRANGULA CALIFORNICA COFFEE BERRY	PLANT PER DETAIL B	5 GAL.	V. LOW	26
S4	HETEROMELES ARBUTIFOLIA TOYON	PLANT PER DETAIL B	5 GAL.	V. LOW	14
S5	MUHLENBERGIA RIGENS DEER GRASS	PLANT PER DETAIL B	5 GAL.	LOW	46
S6	ARCTOSTAPHYLOS 'SUNSET' SUNSET MANZANITA	PLANT PER DETAIL B	5 GAL.	LOW	23
S7	ROSA CALIFORNICA CALIFORNIA WILDROSE	PLANT PER DETAIL B REFER TO PLANT LEGEND NOTE #9	5 GAL.	LOW	23
S8	SAMBUCUS NIGRA SPP. CAERULEA BLUE ELDERBERRY	PLANT PER DETAIL B REFER TO PLANT LEGEND NOTE #9	5 GAL.	LOW	13

**GROUNDCOVERS**

SYMBOL	NAME	COMMENTS	SIZE	WUCOLS	QTY.
G1	CAREX PRAEGRACILIS CALIFORNIA FIELD SEDGE	PLANT PER DETAIL B 36" O.C.	4" POTS	LOW	19
G2	CEANOTHUS GLORIOSUS 'ANCHOR BAY' ANCHOR BAY CEANOTHUS	PLANT PER DETAIL B 72" O.C.	5 GAL.	LOW	92
G3	ACHILLEA MILLEFOLIUM COMMON YARROW	PLANT PER DETAIL B 24" O.C.	1 GAL.	LOW	43
G4	NOIYO GRAVEL GRAVEL BORDER	2 FOOT WIDE BORDER SURROUNDING THE BUILDING	2"-4"	N/A	423 SQ. FT.

**PLANTING LEGEND NOTES**

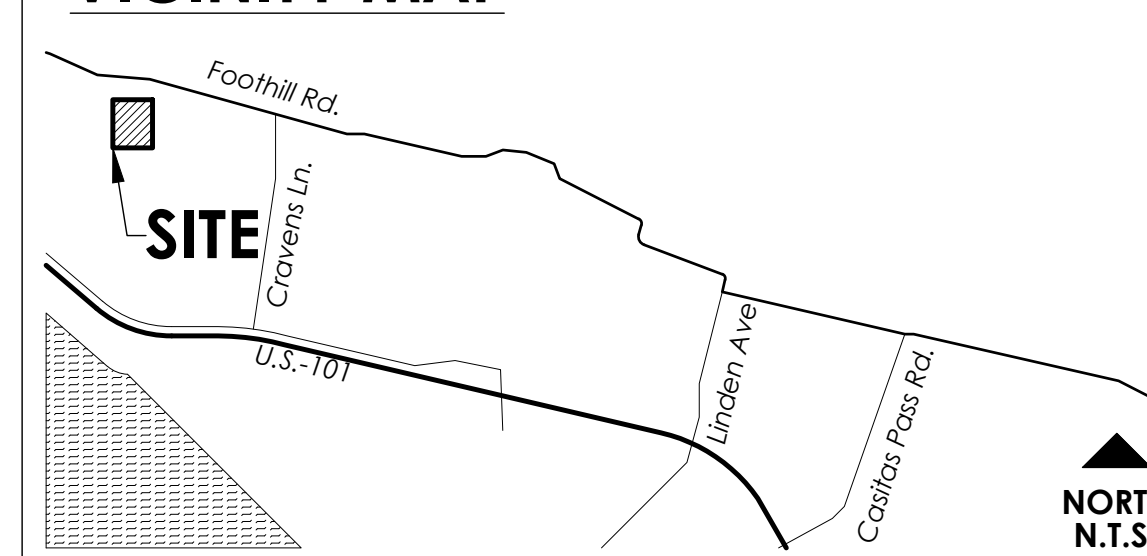
1. ALL TREES ARE TO BE STAKED PER DETAIL A
2. ALL SHRUBS ARE TO BE PLANTED PER B
3. CONTRACTOR IS TO PROVIDE AN AUTOMATIC IRRIGATION SYSTEM WITH 100% COVERAGE AND SEPARATE SUN/SHADE AND TURF/GROUNDCOVER SYSTEMS. REFER TO IRRIGATION PLANS FOR SPECIFICS OF INSTALLATIONS.
4. CONTRACTOR SHALL NOT DETOUR FROM ANY OF THE PLANT MATERIAL ON THE LIST UNLESS CONSULTING WITH THE LANDSCAPE ARCHITECT FIRST.
5. CONTRACTOR SHALL INSTALL HEADER AT THE EDGE OF ALL TURF TO SHRUB AREAS. SEE DETAILS FOR MATERIAL.
6. ALL SHRUB AREAS SHALL RECEIVE A 3" LAYER OF MEDIUM SIZED FIR MULCH 1/2" TO 1" IN DIAMETER. TOP SURFACE OF MULCH SHALL BE A MINIMUM OF 1" BELOW ANY ADJACENT HARDSCAPE. "GORILLA HAIR" OR POST CONSTRUCTION WASTE WILL NOT BE ACCEPTED.
7. ALL SLOPE AREAS 3:1 OR GREATER SHALL HAVE JUTE NETTING OR EQUIVALENT SLOPE STABILIZATION MATERIAL APPLIED ON TOP OF ANY APPLIED MULCH.
8. ALL PLANT MATERIAL, COLOR, SIZE AND QUANTITIES ARE TO BE VERIFIED WITH OWNER.
9. PLANT MATERIAL WAS SELECTED PER BIOLOGIST FOR THE TRANSITION RIPARIAN HABITAT.



**NOTE:**

GRADING AND SITE DISTURBANCE SHALL REMAIN AT LEAST 6 FEET OUTSIDE OF THE EXISTING OAK'S DRIPLINE WHENEVER FEASIBLE. IF GRADING MUST ENCROACH WITHIN THAT PROTECTED AREA, ALL SUCH WORK SHALL BE CONDUCTED UNDER THE SUPERVISION OF THE LANDSCAPE ARCHITECT/ARBORIST

**VICINITY MAP**



**SHEET TITLE**

**LANDSCAPE  
SCREENING  
PLAN**

**OWNER** Cresco California  
P.O. Box 183  
Carpinteria, California 93014

**DATE** 2021.10.12  
21839

**SHEET NO.**

**L-1.2**



# SLO CULTIVATION

3889 FOOTHILL ROAD // CARPINTERIA, CALIFORNIA 93013

SHEET TITLE

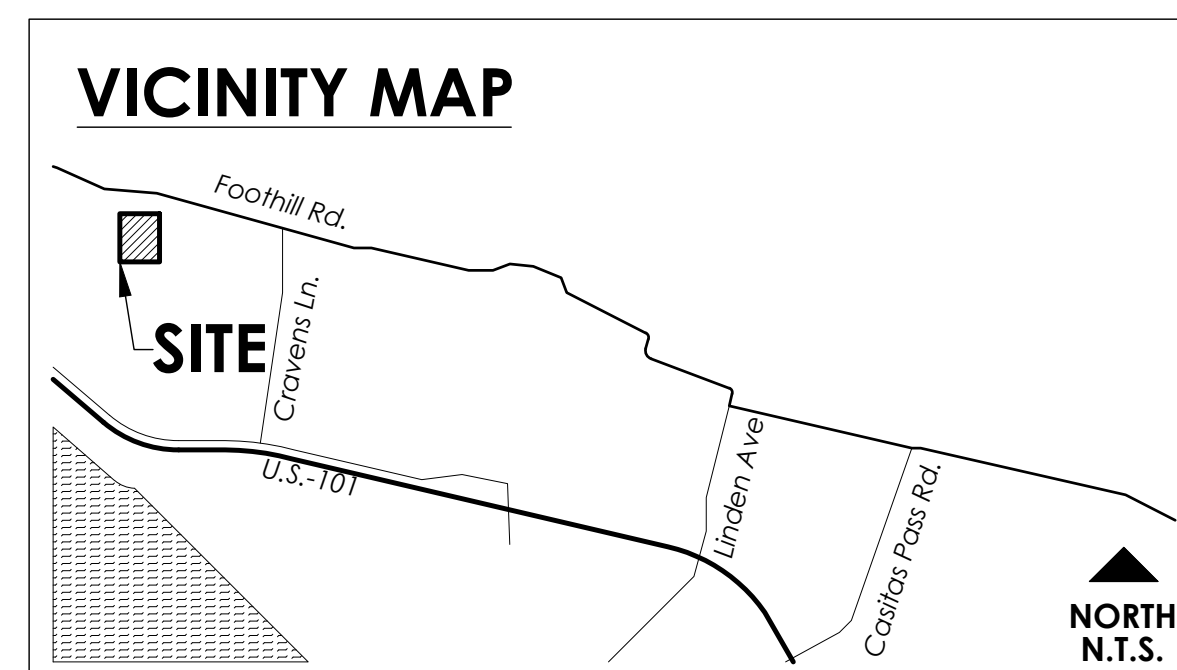
## EXISTING RENDERED SITE PLAN

OWNER Cresco California  
P.O. Box 183  
Carpinteria, California 93014

DATE 2021.10.12  
21839

SHEET NO.

# L-1.3



EXISTING RENDERED SITE PLAN



**SLO CULTIVATION**

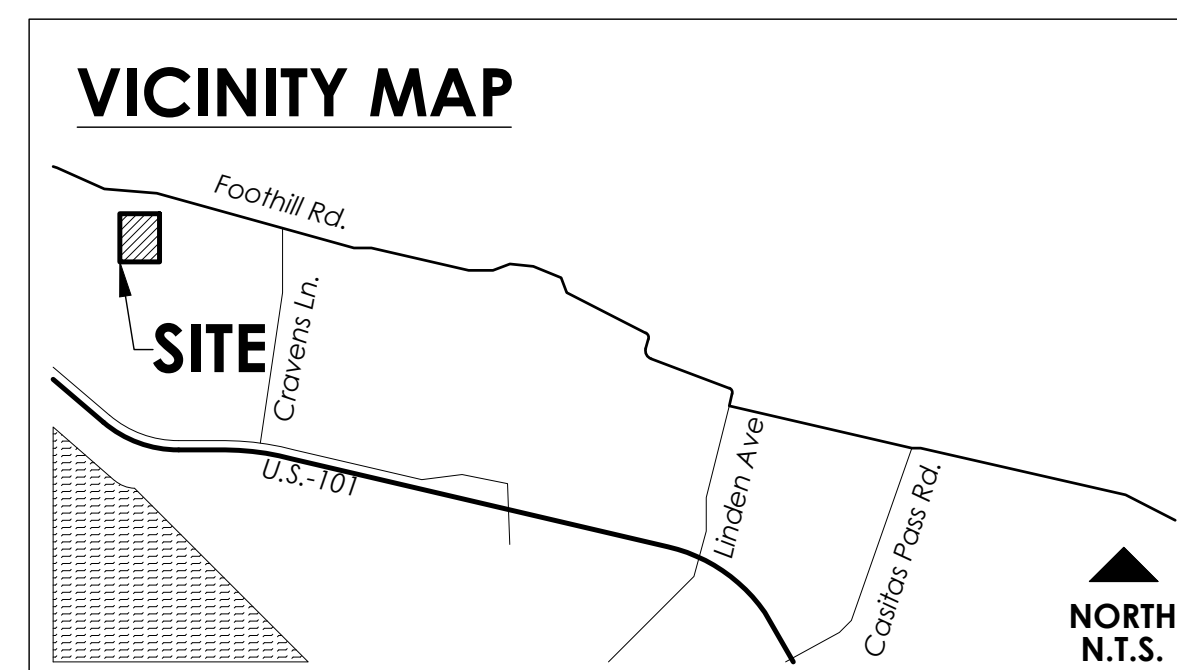
3889 FOOTHILL ROAD // CARPINTERIA, CALIFORNIA 93013

NOT A PART  
REFER TO CAL-TRANS  
LANDSCAPE PLANS



**PROPOSED RENDERED SITE PLAN**

0 25 50 100  
SCALE: 1" = 50'-0" NORTH



**SHEET TITLE**  
**PROPOSED  
RENDERED SITE  
PLAN**

**OWNER** Cresco California  
P.O. Box 183  
Carpinteria, California 93014

**DATE** 2021.10.12  
21839

**SHEET NO.**

**L-1.4**

**NORTH  
N.T.S.**

\\pleinaire\420\pleinaire Shared\Drawing File\SCS Traer\Corp Camabis\GF\Landscapes\Conceptual\SLO Cultivation - R.dwg, 10/12/2021 3:27:06 PM