



countyofsb.org

Thomas Fire Update

December 12, 2017
Board of Supervisors



countyofsb.org

Emergency Declarations

- **Governor's Declaration 12/5/17**
(12/7/17 for Santa Barbara County)
- **Presidential Declaration 12/8/17**
- **County of Santa Barbara Proclamation 12/8/17**
(ratify by the BOS 12/12/17)



Fire Information

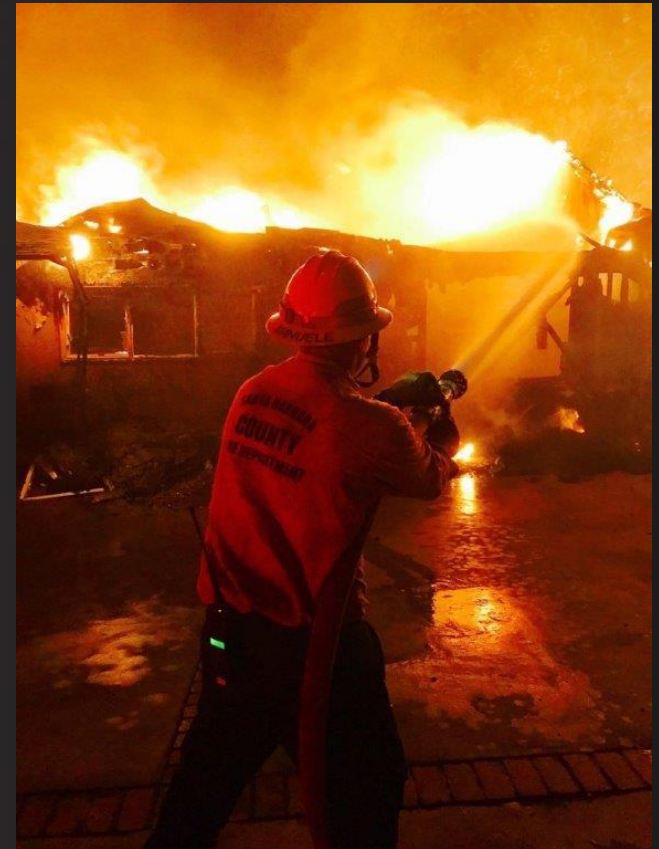
- The Thomas fire started 6:26 p.m. Dec. 4 in Ventura County
- 231,700 acres (7 p.m. Dec. 11)
- 794 structures destroyed and 187 structures damaged (*in Ventura Co*)
- Containment - 15%
- Impacts include power outages, unhealthy air quality, displaced individuals and families, animal evacuations, road closures and countywide school closures
- 7,200 evacuated through mandatory order; 34,000 through voluntary



Resources

(As of 7 p.m. Dec. 11)

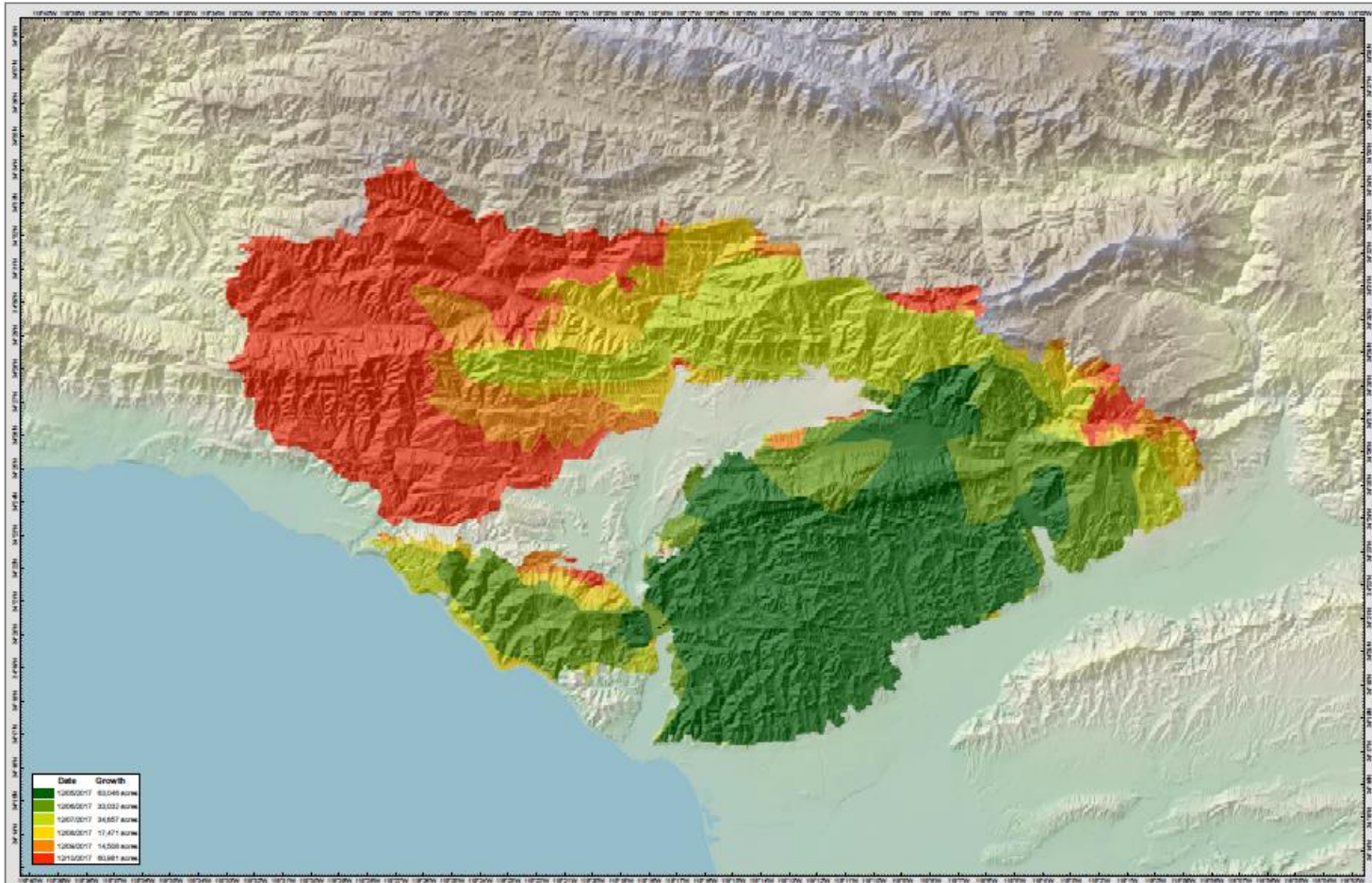
- **Total Personnel** – 6,946
- **Equipment**
 - Engines – 912
 - Dozers - 67
 - Water Tenders – 50
 - Helicopters – 27
 - Hand Crews – 125
 - Other - 3





countyofsb.org

FIRE PROGRESSION MAP (Updated Dec. 11)



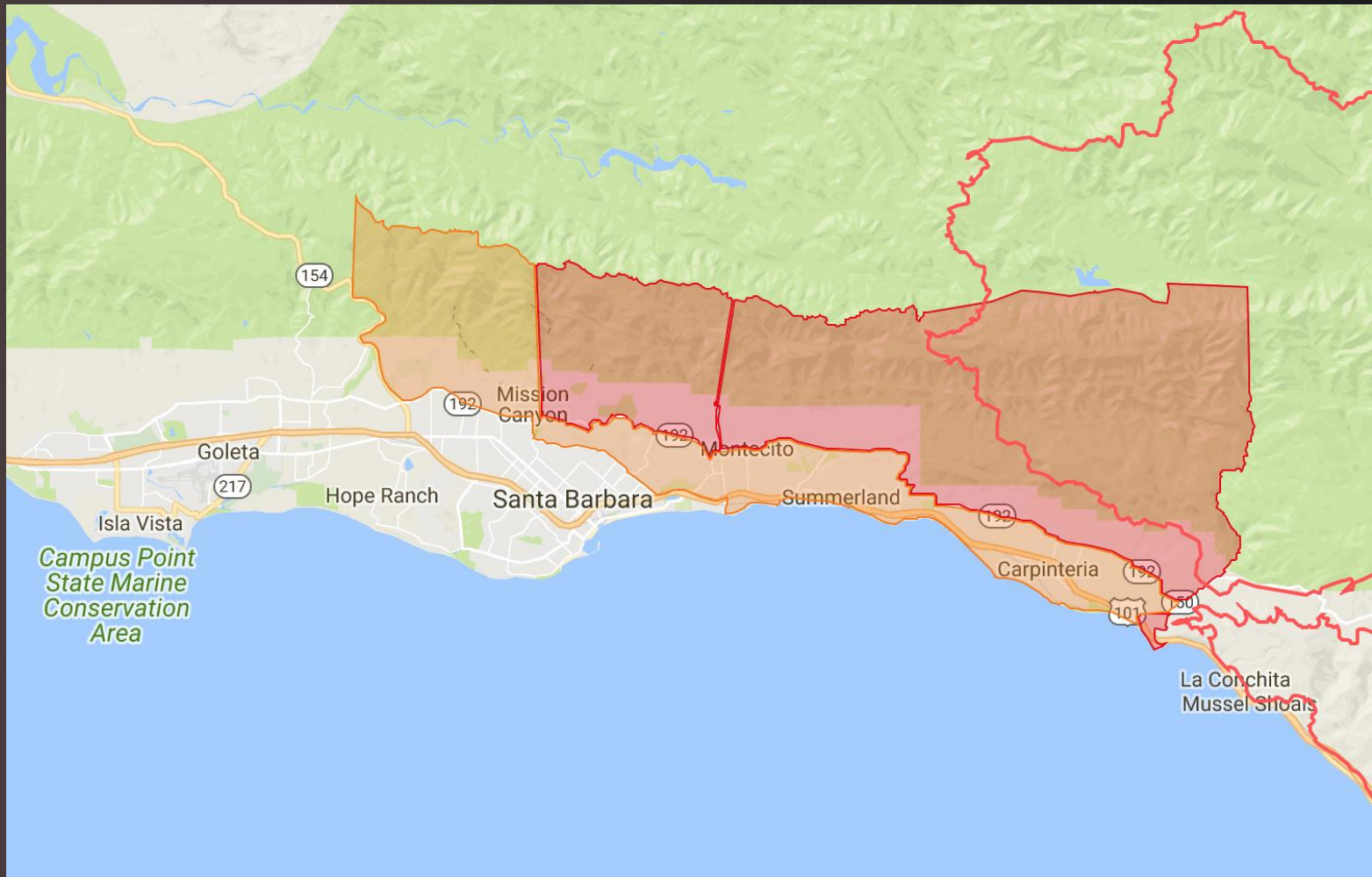
PROGRESSION
Thomas Incident
CA VINC 103155
December 11th, 2017

PROGRESSION
Thomas Incident
CA VINC 103155
December 11th, 2017



countyofsb.org

INTERACTIVE EVACUATION MAP (updated Dec. 11)





OVERLAY MAP (updated Dec. 11)





Evacuation Status in Santa Barbara County

Mandatory Evacuation Orders

- North of HWY 192 to E Camino Cielo between HWY 150 and Mission Canyon Rd.
- Hot Springs Rd to Buena Vista Rd, from Hwy 192 north to E Camino Cielo
- Buena Vista east to the County line and north of HWY 192 (E. Valley Road), to include the 900 block of Park Ln east.
- Carpinteria area east of Toro Canyon Rd. East to HWY 150, north of HWY 192 to Camino Cielo.
- Carpinteria area east of intersection of Casitas Pass Rd & HWY 192, north of HWY 192, & west of the county line.
- SR-192 north to E. Camino Cielo between Toro Canyon Rd and Linden Ave.
- Shepherd Mesa, Gobernador Cyn and Rincon Point

Voluntary Evacuation Warnings

- Above (north of) Highway 192 between Mission Cyn and HWY 154
- South of HWY 192, east of Mission Cyn, west of Hot Springs, north of APS, Salinas St and HWY 101 to Hot Springs
- East of Hot Springs, south of HWY 192, west of HWY 150



Watershed Impacts

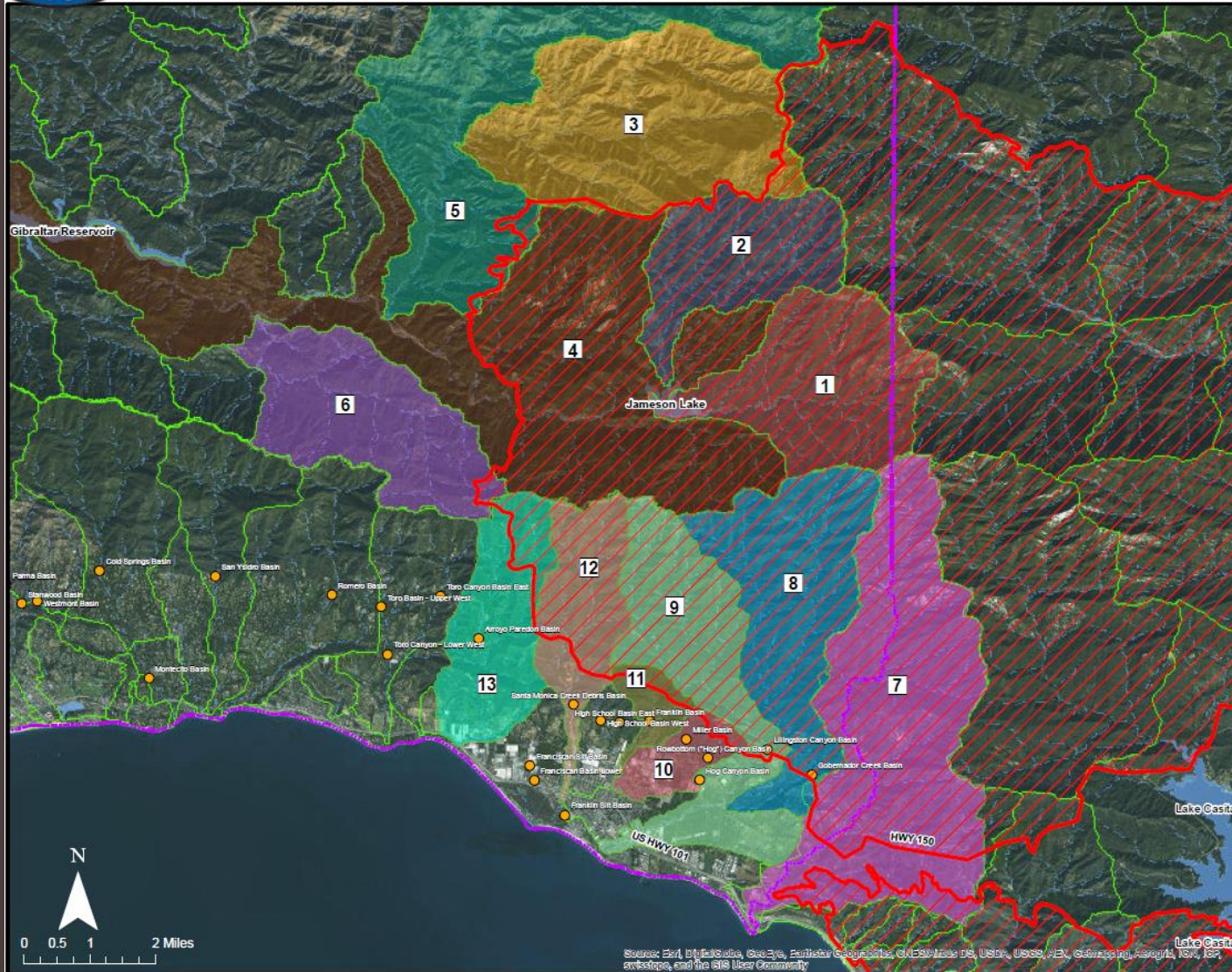
- Two Major Watershed Impacts
 - Flood threat below fire (currently Carpinteria area)
 - Water quality impacts to supply
 - Jameson Reservoir
 - Gibraltar Reservoir
 - Prepared initial flood control plan of attack
 - Coordinating with water purveyors for water supply issues



countyofsb.org

Watershed Management





Department of Public Works
Water Resources Division
County of Santa Barbara

Legend

Fire Perimeter 12-11-2017 12:10 A.M.

	Acreege Burned	% of Watershed
	1 4,500	100%
	2 3,000	99%
	3 284	4%
	4 8,743	21%
	5 220	2%
	6 91	2%
	7 7,674	85%
	8 4,683	92%
	9 3,084	67%
	10 132	14%
	11 200	31%
	12 1,847	76%
	13 536	18%

- Watershed
- Basins
- Creeks
- Reservoirs
- County Boundary

Thomas Fire
Santa Barbara County, California

Source: Esri, DigitalGlobe, GeoEye, Earthstar Geographics, CNES/Airbus DS, USDA, USGS, AeroX, GeoEye, IGN, Aerogrid, GEBCO, and the GIS User Community



Health of the County

- Monitoring stations continue to record unhealthy air in Santa Barbara County
- Air Quality Warnings will remain in effect until conditions improve
- Public information on safety communicated to stakeholders
- Free mask distribution sites are being established in much of the county and expanding further
- Outreach provided to offer masks to field workers
- Plan for distribution of masks for all county employees
- Emphasizing reuse of masks





Emergency Operation Center

- Level 2 activation occurred on Dec. 4
- Level 3 activation (highest level) occurred on Dec. 8
- 35 county personnel assigned to work in the EOC with multiple others on-call

Communications

- Increased Aware and Prepare Registration
 - 14,500
- Social Media
 - Twitter up by 2,500 followers
 - Facebook up by 1,600 followers
- Press Releases
- Town Hall Meetings
- Media Interviews





Water & Power Conservation

Water conservation

- Restrict any outdoor water use and conserve indoors.
- Now is not the time to clear ash!



Power conservation

- With the support of first responders, SCE has safely begun inspecting damage to electrical equipment and infrastructure.
- SCE requests us all to reduce power consumption in order to provide maximum coverage to the entire Santa Barbara area.



countyofsb.org

THANK YOU FOR YOUR SUPPORT

Sign up now!

www.AwareandPrepare.org

Aware & Prepare

A Community Partnership to Stengthen
Emergency and Disaster Readiness