



# Chronic Homelessness Ten Year Plan

---

The 10% of the Homeless  
Population that consumes 50% of  
Resources available to all  
Homeless



# Who are the Chronically Homeless?

---

- An individual with a disability (mental illness, addiction, etc.)
- Is unaccompanied
- Has either been continuously homeless for longer than one year or has been homeless four or more times within the past three years



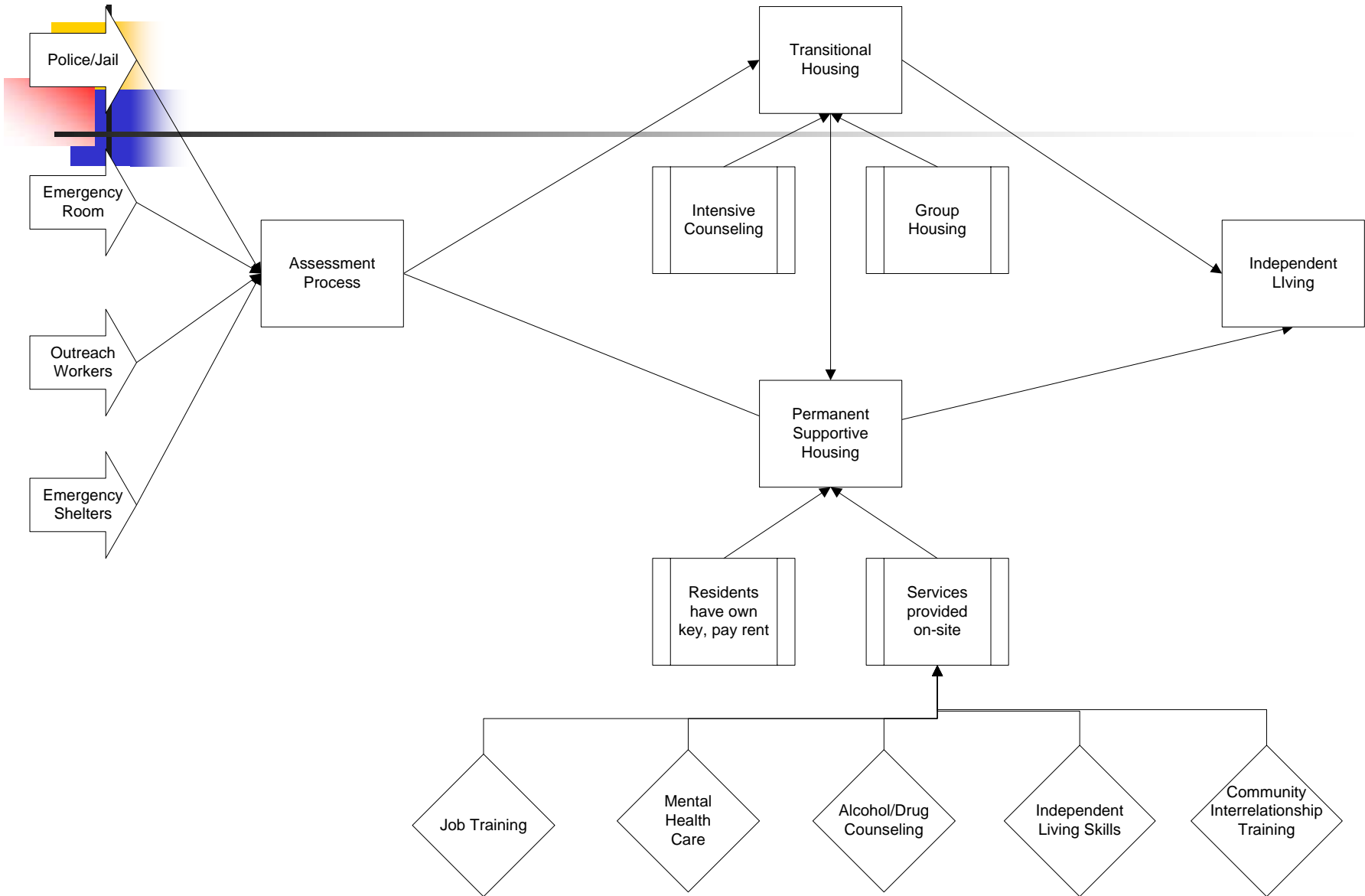
# The Cost of Chronic Homelessness

---

- **\$ 5,461,860** each year for the homeless staying in jail
- **\$ 1,863,000** each year for homeless individuals in crisis sent to the County's Psychiatric Health Facility
- **\$ 7,212,400** each year for homeless staying overnight at Cottage Hospital
- **\$ 950,000** each year to keep the three homeless shelter doors open to the homeless
- **\$ 180,000** each year to operate the North County Detox Center
- **\$15,667,260** Total in just these few areas

# THEORETICAL PROGRAMMATIC STRUCTURE

HOUSING AND COMMUNITY DEVELOPMENT





# Outcomes of a Ten Year Plan

---

- Eligibility for New Financial Resources to Provide Permanent Supportive Housing
- Competitiveness in Annual HUD Application to Continue current \$1.4million Supportive Housing Funding
- Reduction in the number of hospital emergency room/overnight visits
- Reduction of number of Homeless Individuals in jail