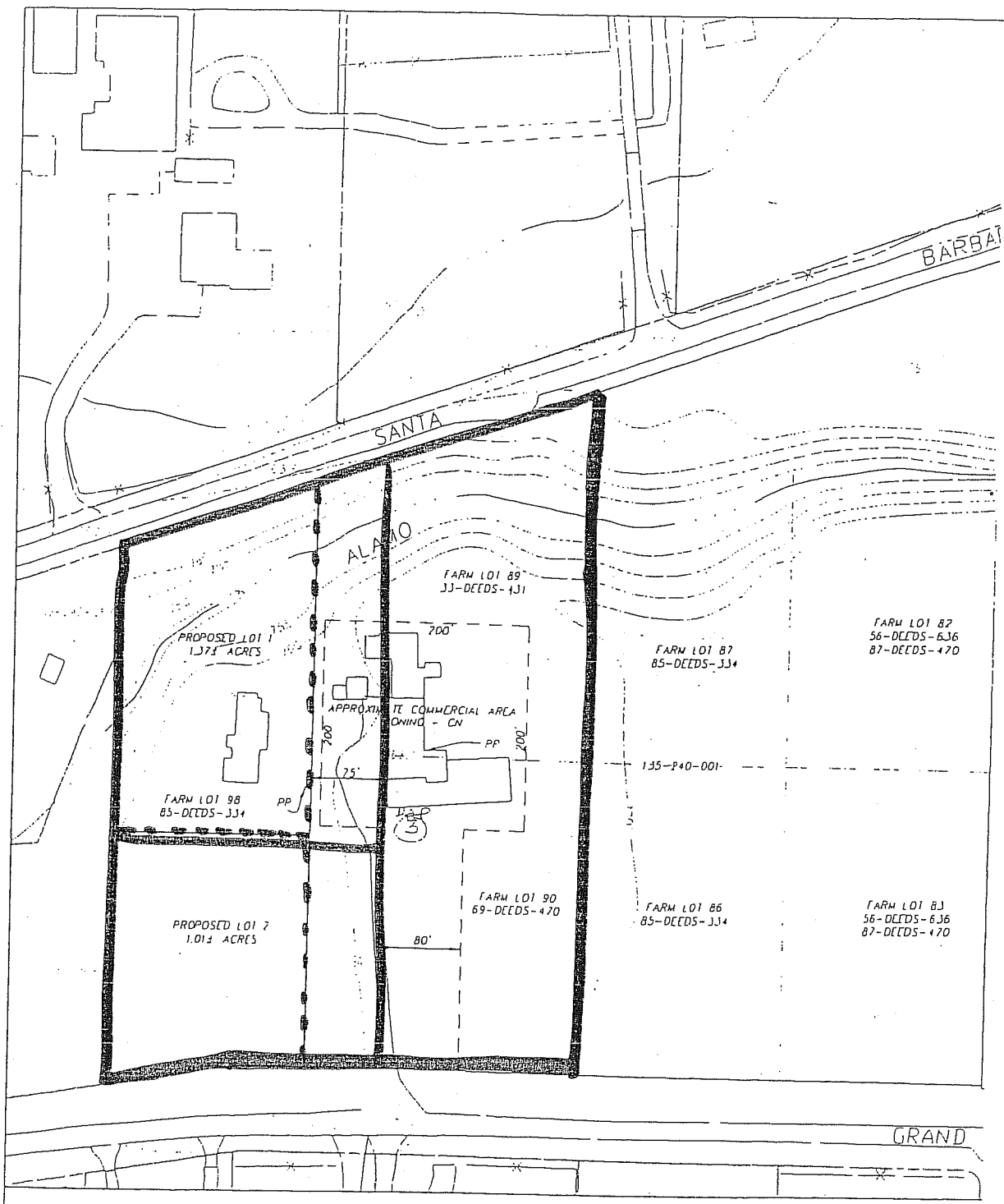


G.1



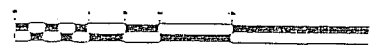
ATTACHMENT I
Existing/Proposed Parcel Map -05LLA-00000-00015

MNS ENGINEERS - SURVEYORS - CONSTRUCTION MANAGERS
 QUALITY INFRASTRUCTURE SERVICES

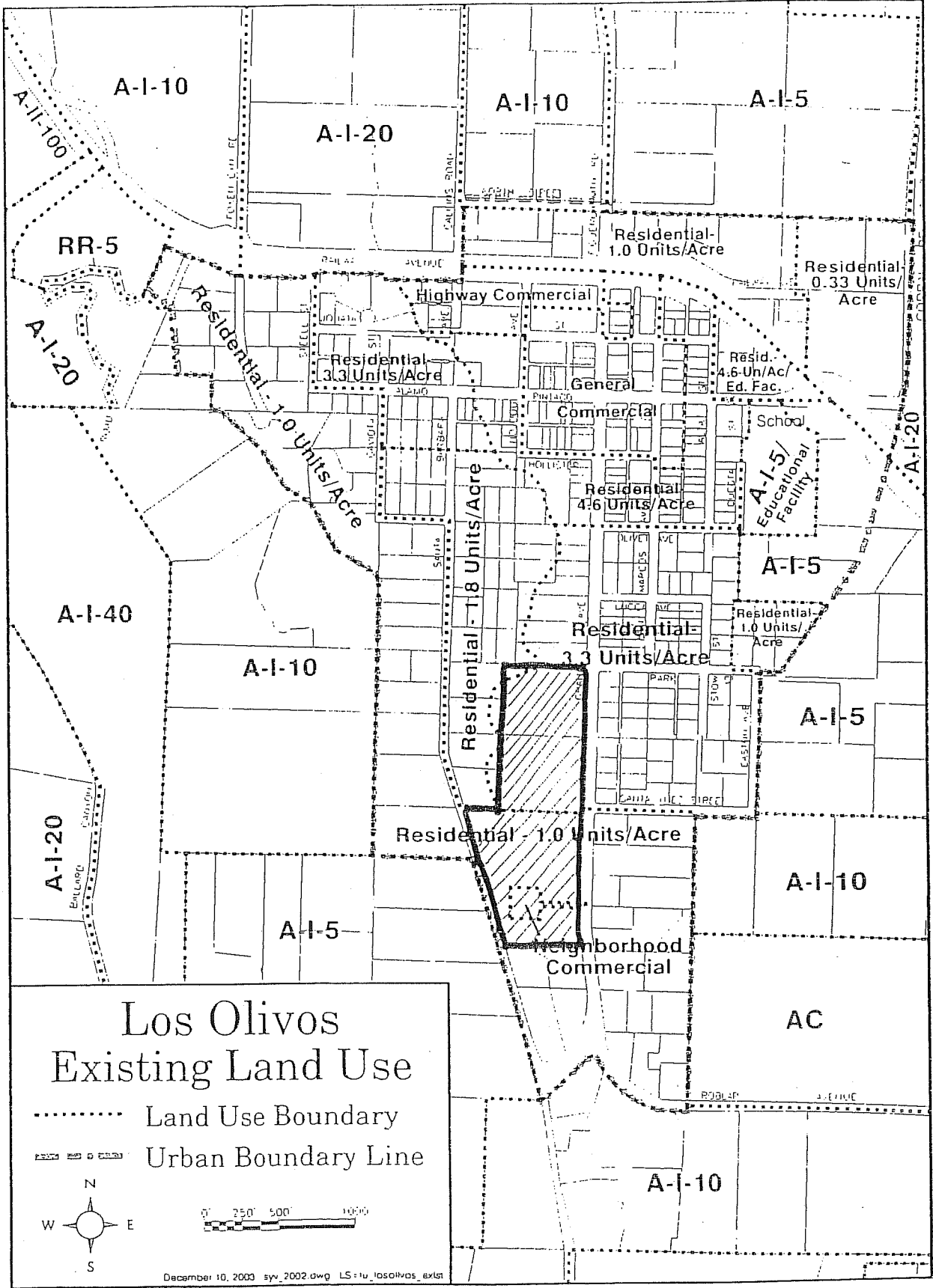
301 INDUSTRIAL WAY SUITE A BURLINGTON, CA 95021
 TELEPHONE (925) 938-2200 FAX (925) 938-3218



GRAPHIC SCALE

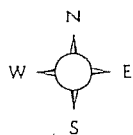
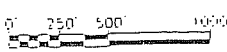


1" = 100'
 1" = 100'



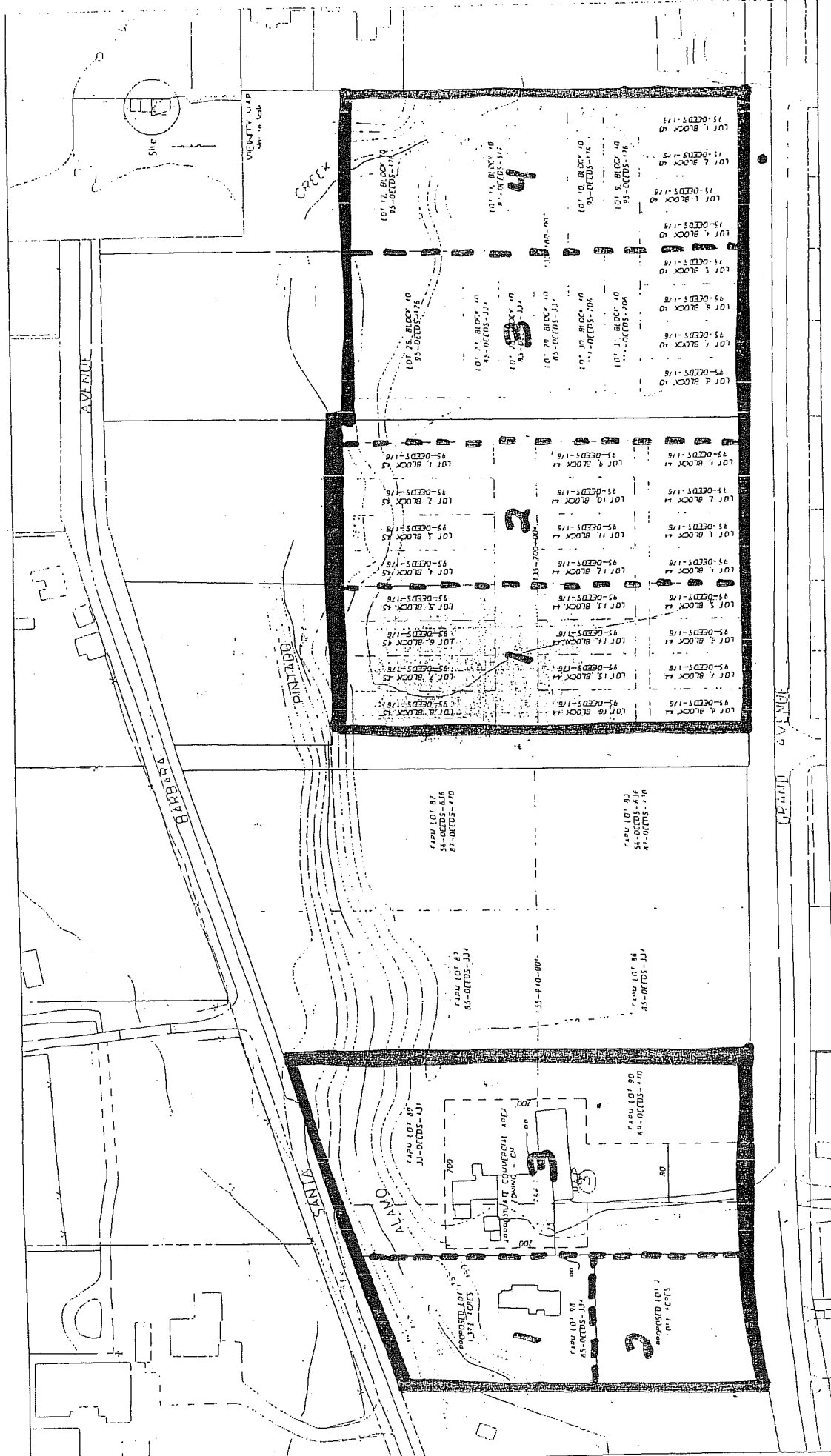
**Los Olivos
Existing Land Use**

..... Land Use Boundary
- - - - - Urban Boundary Line

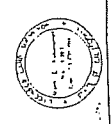
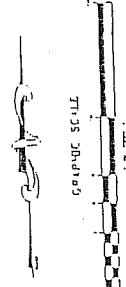



December 10, 2003 syv_2002.dwg LS:lv_losolivos_ext1

ATTACHMENT 4 Proposed Parcel Map - Entire Montanaro



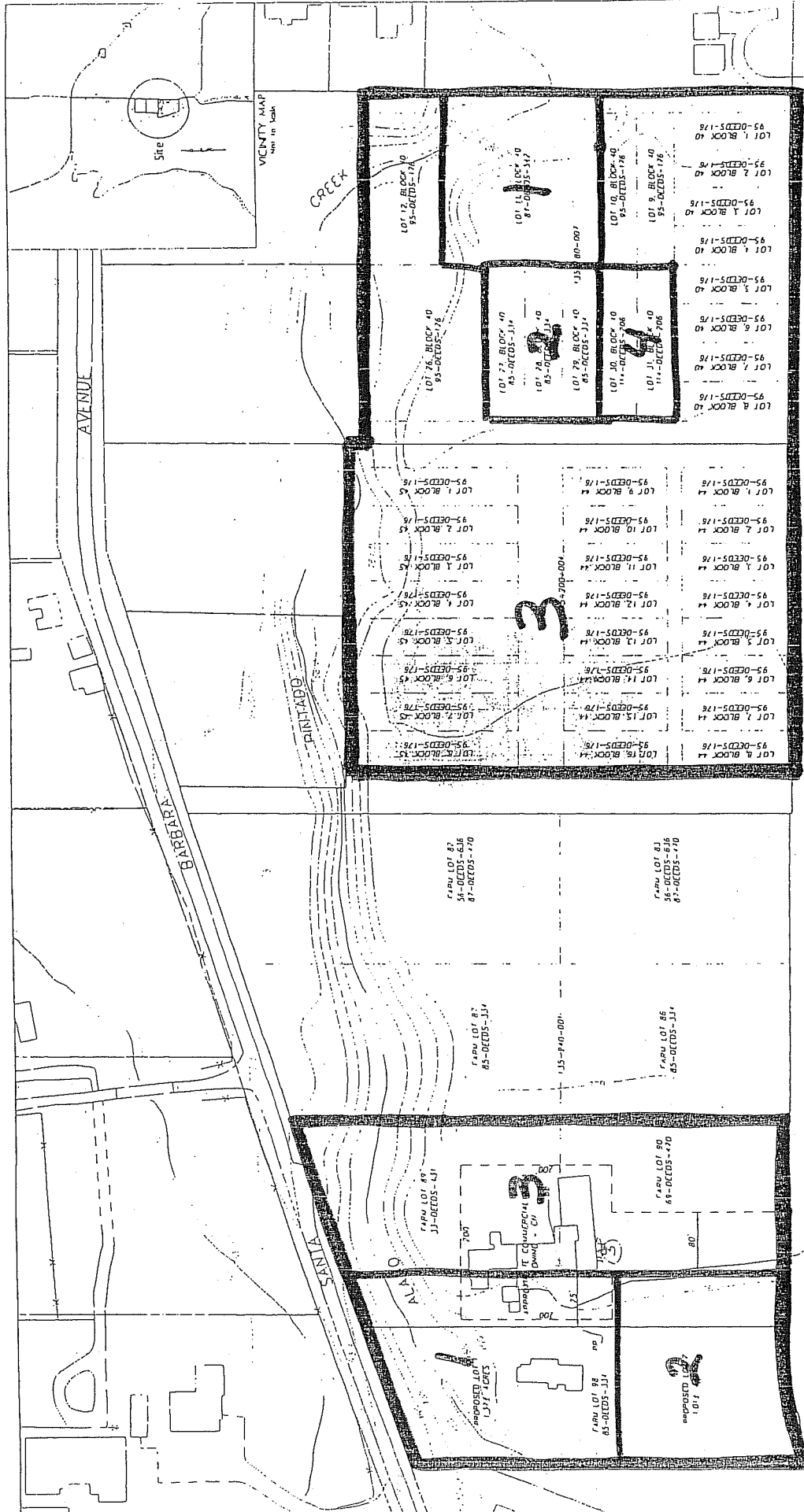
BOUNDARY DISCLAIMER
THE INFORMATION CONTAINED HEREIN IS FOR INFORMATIONAL PURPOSES ONLY AND DOES NOT CONSTITUTE AN OFFER OF ANY FINANCIAL PRODUCT OR SERVICE. THE INFORMATION IS NOT INTENDED TO BE USED AS A BASIS FOR INVESTMENT DECISIONS. THE INFORMATION IS NOT INTENDED TO BE USED AS A BASIS FOR INVESTMENT DECISIONS.



JUNES
Professional Surveyors
1000 North 1st Street, Suite 100
San Jose, CA 95131
Phone: (408) 281-1111
Fax: (408) 281-1112
www.junes.com

SITE MAP
APN 135-240-001,
135-200-004 & 135-180-007
Los Olivos, CA
October 2004

ATTACHMENT 3
Existing Parcel Map - Entire Montanaro



SITE MAP
APN 135-240-001,
135-200-004 & 135-180-007
Los Olivos, CA.

BOUNDARY DISCLAIMER
THE SITE MAP IS FOR INFORMATIONAL PURPOSES ONLY. IT IS NOT A GUARANTEE OF THE ACCURACY OF THE INFORMATION SHOWN. THE INFORMATION IS PROVIDED AS IS, WITHOUT WARRANTY OF ANY KIND, EXPRESS OR IMPLIED, INCLUDING BUT NOT LIMITED TO THE WARRANTIES OF MERCHANTABILITY, FITNESS FOR A PARTICULAR PURPOSE AND NONINFRINGEMENT. THE USER SHALL BE RESPONSIBLE FOR VERIFYING THE ACCURACY OF THE INFORMATION SHOWN.



GRAPHIC SCALE



UNIVERSITY OF CALIFORNIA, BERKELEY
EXTENSION SERVICES, CONTRACTING SERVICES