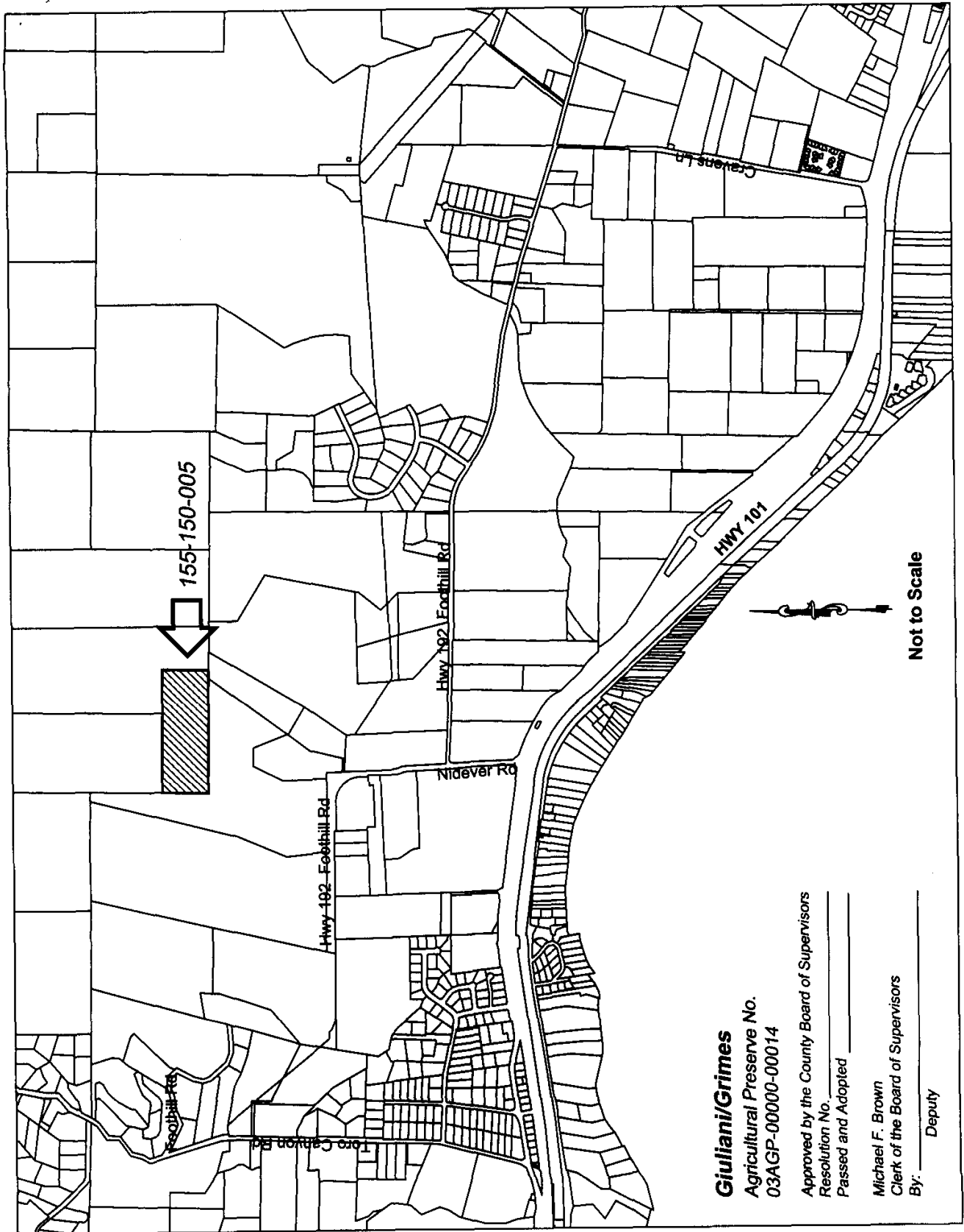


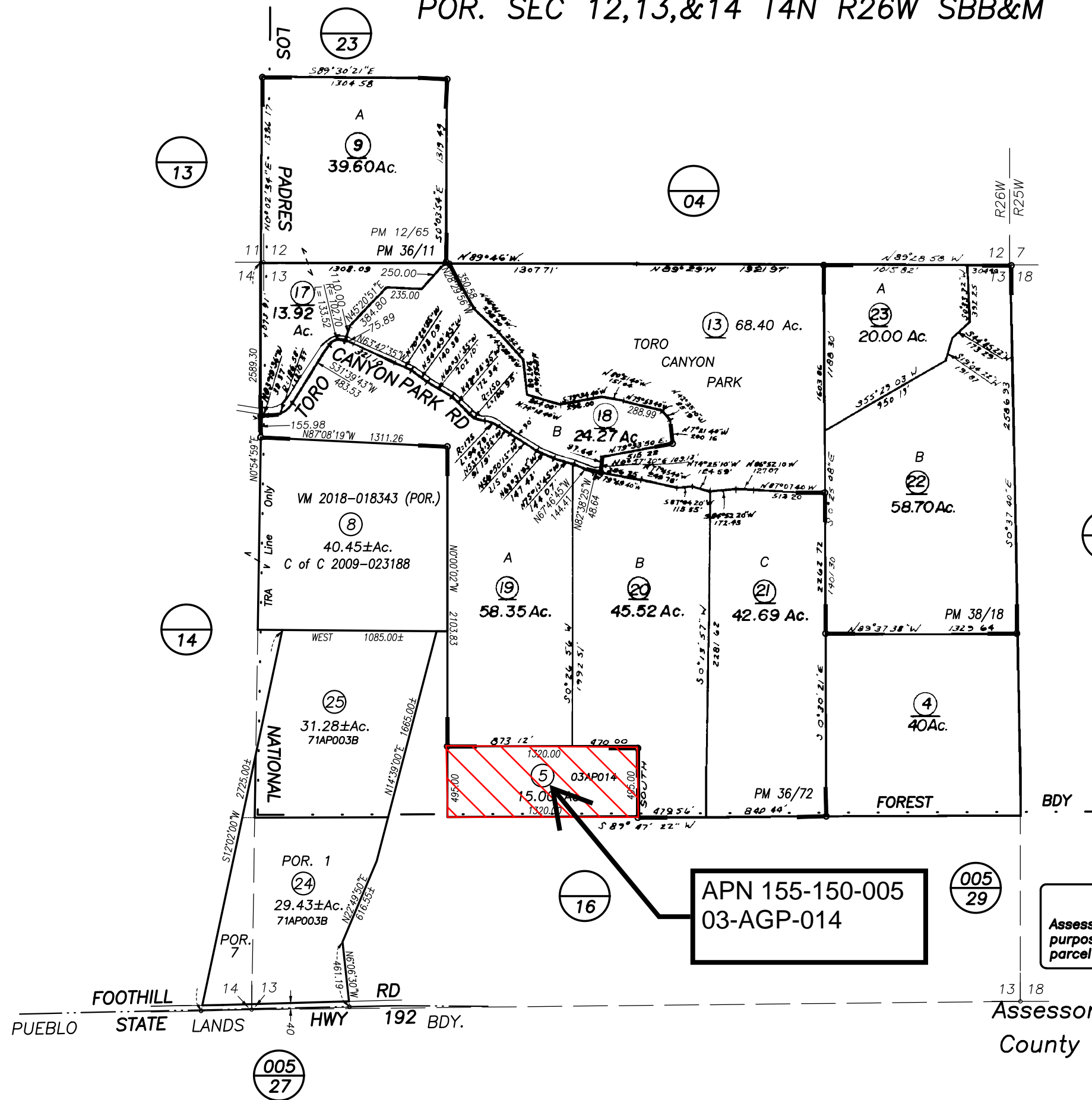
ATTACHMENT 2: VICINITY MAP



Giuliani/Grimes
Agricultural Preserve No.
03AGP-00000-00014

Approved by the County Board of Supervisors
Resolution No. _____
Passed and Adopted _____

Michael F. Brown
Clerk of the Board of Supervisors
By: _____ Deputy



APN 155-150-005
03-AGP-014

NOTICE
Assessor Parcels are for tax assessment purposes only and do not indicate either parcel legality or a valid building site.

Assessor's Map Bk, 155-Pg, 15
County of Santa Barbara, Calif.

07/20 8, corrected N'ly bdy.
24, 25, corrected acreage