



05-0K330 - Gaviota Culvert Repair
CROS and CHIPS roadkill data 2010-2016

- Area of Potential Impacts (API)
- 0.5-mile project buffer
- Proposed Culvert
- Existing Culvert
- ▲ CHIPS dataset 2010-2016
- ⊕ CROS dataset 2010-2016

RACCOON
2015

MULE DEER
2015

COYOTE
2014

GRAY FOX
2010

GRAY FOX
2014

Canada del Barro

MULE DEER
2015

GROUND SQUIRREL
2014







STRIPED SKUNK
2015

MULE DEER
2015

MULE DEER
2016



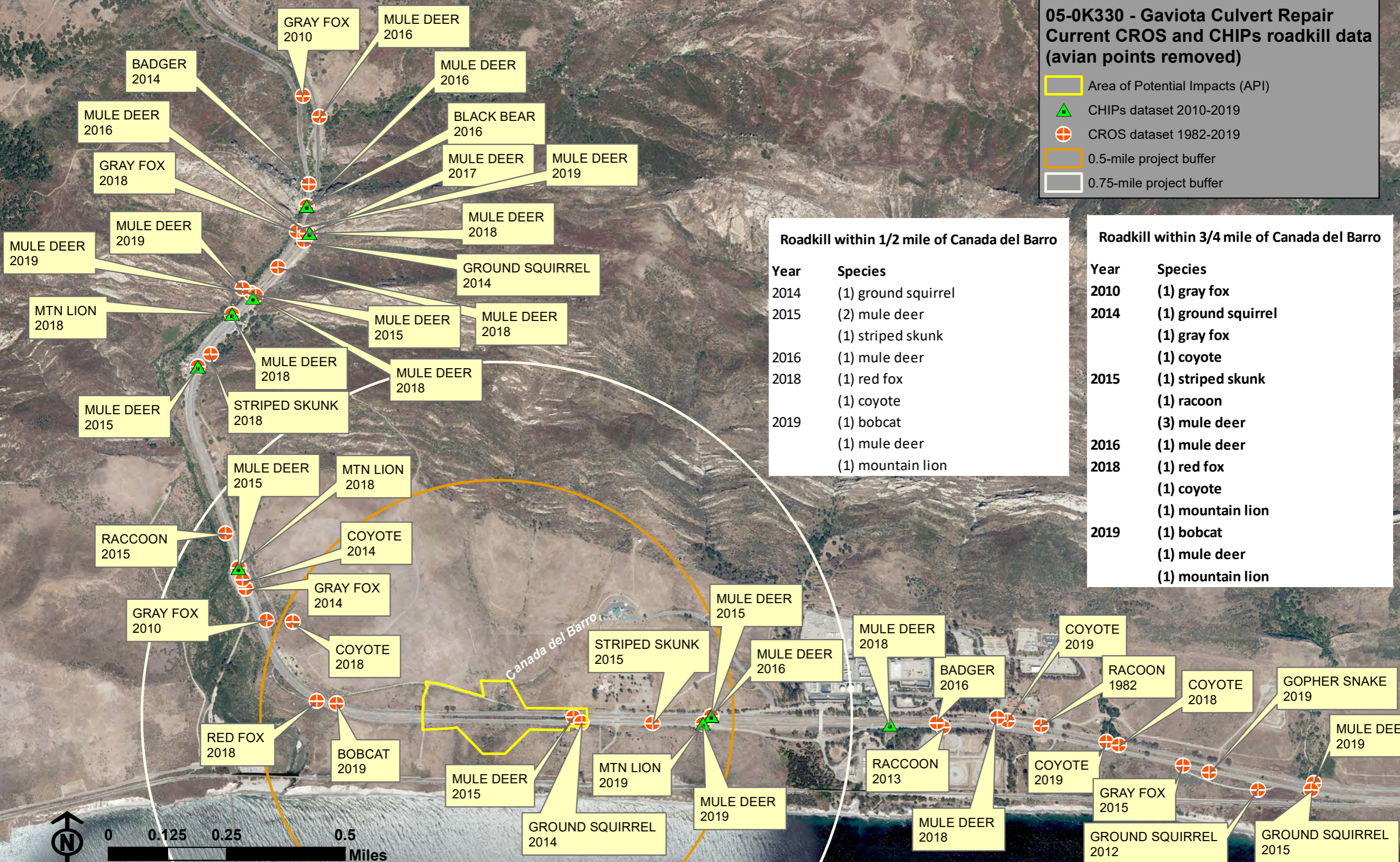
05-0K330 - Gaviota Culvert Repair
CROS and CHIPS roadkill data 2010-2019

-  Area of Potential Impacts (API)
-  0.5-mile project buffer
-  Existing Culvert
-  Proposed Culvert
-  CHIPS dataset 2010-2019
-  CROS dataset 2010-2019



05-0K330 - Gaviota Culvert Repair
Current CROS and CHIPS roadkill data
 (avian points removed)

- Area of Potential Impacts (API)
- ▲ CHIPS dataset 2010-2019
- ⊕ CROS dataset 1982-2019
- 0.5-mile project buffer
- 0.75-mile project buffer



Roadkill within 1/2 mile of Canada del Barro

Year	Species
2014	(1) ground squirrel
2015	(2) mule deer (1) striped skunk
2016	(1) mule deer
2018	(1) red fox (1) coyote
2019	(1) bobcat (1) mule deer (1) mountain lion

Roadkill within 3/4 mile of Canada del Barro

Year	Species
2010	(1) gray fox
2014	(1) ground squirrel (1) gray fox
	(1) coyote
2015	(1) striped skunk (1) racoon
	(3) mule deer
2016	(1) mule deer
2018	(1) red fox (1) coyote (1) mountain lion
2019	(1) bobcat (1) mule deer (1) mountain lion

