

SANTA BARBARA COUNTY

**Resource Recovery &  
Waste Management Division**

*Innovative Environmental Solutions*



# Solid Waste Rates for FY 24/25

- Facility Tipping Fees
- New Cuyama Parcel Fees
- Franchised Hauler Collection Rates

# Facility Tipping Fees

- Tipping fees pay for solid waste, recycling, and organics processing at the County's two transfer stations, the ReSource Center, Tajiguas Landfill and UCSB household hazardous waste collection center
- Tipping fees are evaluated annually and increased to the extent needed to meet the Division's debt obligations
- Franchised trash and recyclables tip fees for FY 24-25 will increase 7.4% from \$176 to \$189 per ton at all County facilities



# Cuyama Valley Parcel Fees

- Assessed on annual property tax
- \$77 per single-family dwelling
- Fees support New Cuyama and Ventucopa transfer stations
- No change recommended



# Franchised Hauler Collection Rates



# Collection Rates Driven by Three Components

## 1. Collection Component

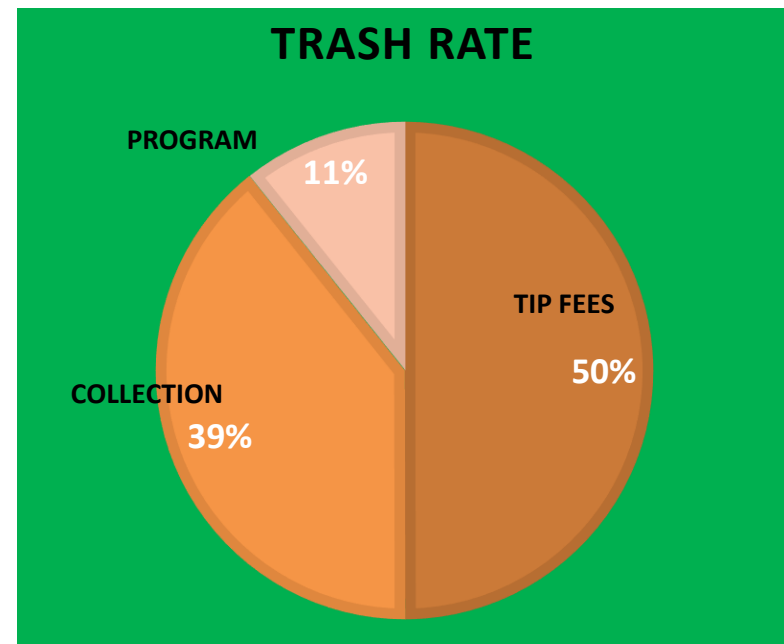
- Subject to CPI adjustment of 3.5%  
(Zone 1-3 rates are subject to an overall adjustment of 4.7%)

## 2. Tipping Fee Component

- Zones 1-3 and Zone 4 Santa Ynez – 7.4% increase
- Zone 4 Lompoc Valley – 24.5% increase
- Zone 5 – 20.3% increase

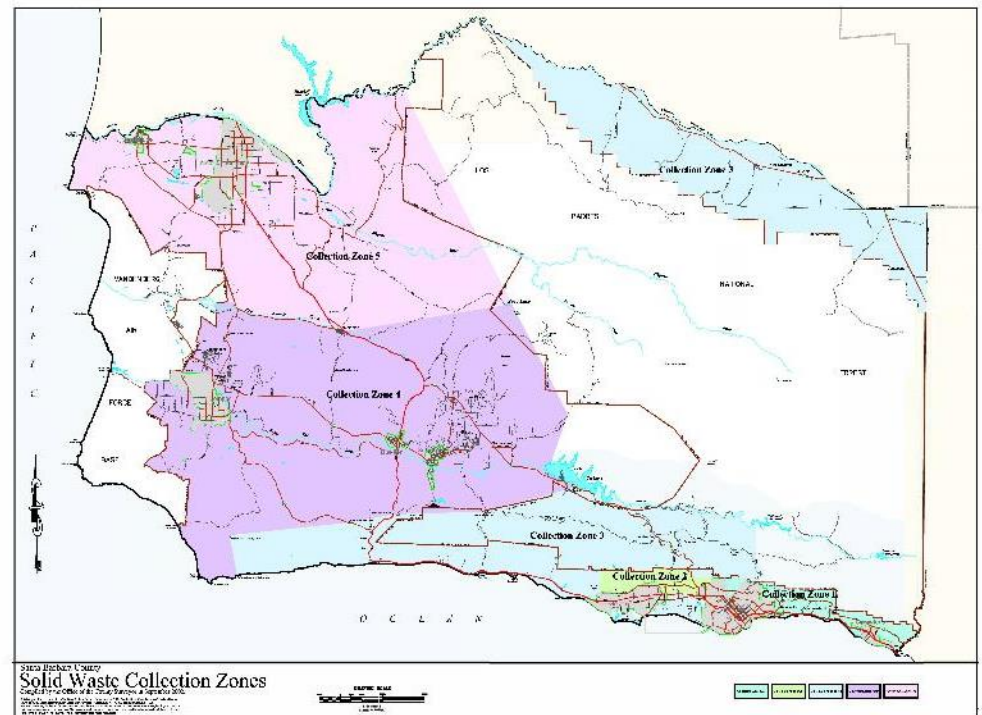
## 3. Solid Waste Program Fee Component

- No change; remains 11%



# Zones 1-3

- Waste service will continue to be provided by MarBorg Industries per the Zone 1-3 Franchise Agreement approved by the Board on May 24, 2022
- On average, residential and commercial rates in Zones 1-3 will increase 5.0% to 6.5% depending on the specific service level and area



# Zones 4 & 5

- MarBorg Industries will commence waste service for Zones 4 & 5 on July 1, 2024, as approved by the Board on July 11, 2023
- Fiscal year 2024/2025 will be the inaugural year for the new rates in Zones 4 & 5



# Zones 4 & 5

Due to increases in solid waste tipping fees at local waste facilities, rates will not decrease across the board as initially projected in early 2023.

Service Level	Current FY 23/24	Proposed FY 24/25	% Change
Z4 Santa Ynez - Residential (96 gallon)	\$54.77	\$50.77	-7.3%
Z4 Santa Ynez - Commercial Trash (2 yard)	\$254.51	\$254.11	-0.2%
Z4 Santa Ynez - Commercial Recycling (2 yard)	\$239.30	\$242.07	1.2%
Z4 Lompoc - Residential (96 gallon)	\$41.47	\$40.70	-1.9%
Z4 Lompoc - Commercial Trash (2 yard)	\$170.98	\$179.98	5.3%
Z4 Lompoc - Commercial Recycling (2 yard)	\$179.54	\$180.28	0.4%
Z5 - Residential (96 gallon)	\$41.72	\$42.46	1.8%
Z5 - Commercial Trash (2 yard)	\$184.36	\$192.87	4.6%
Z5 - Commercial Recycling (2 yard)	\$144.12	\$143.66	-0.3%

# Zones 4 & 5 Transition

- Facility procurement to support Zone 4 & 5 operations
- Outreach conducted to inform customers of the upcoming transition
- Customers will have the same collection day following the transition
- Container exchanges

# Staff Recommendations

- ✓ Adopt resolution and fee schedule for County facilities
- ✓ Adopt resolution and parcel fee schedule for Cuyama Valley
- ✓ Adopt resolution and fee schedule for franchised solid waste collection services
- ✓ Find that the proposed actions are exempt from CEQA

# Thank you!



SANTA BARBARA COUNTY

---

*Innovative Environmental Solutions*

[www.LessIsMore.org](http://www.LessIsMore.org)