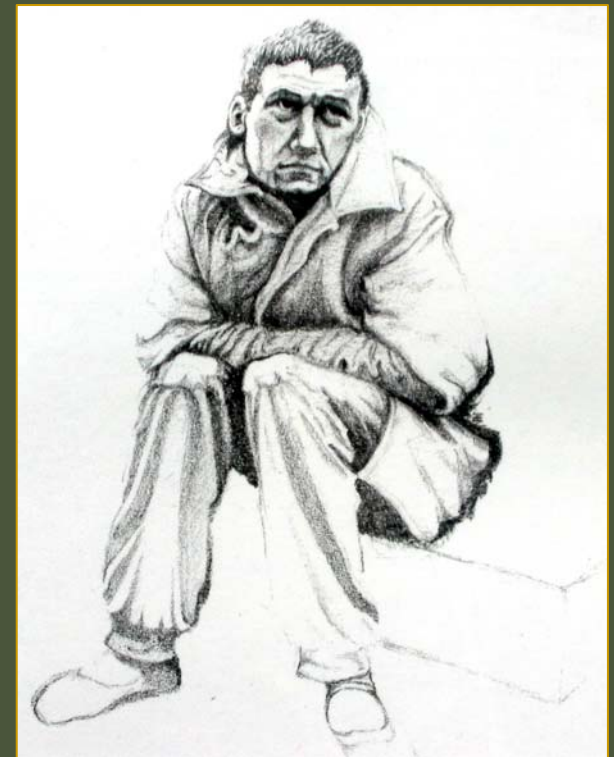
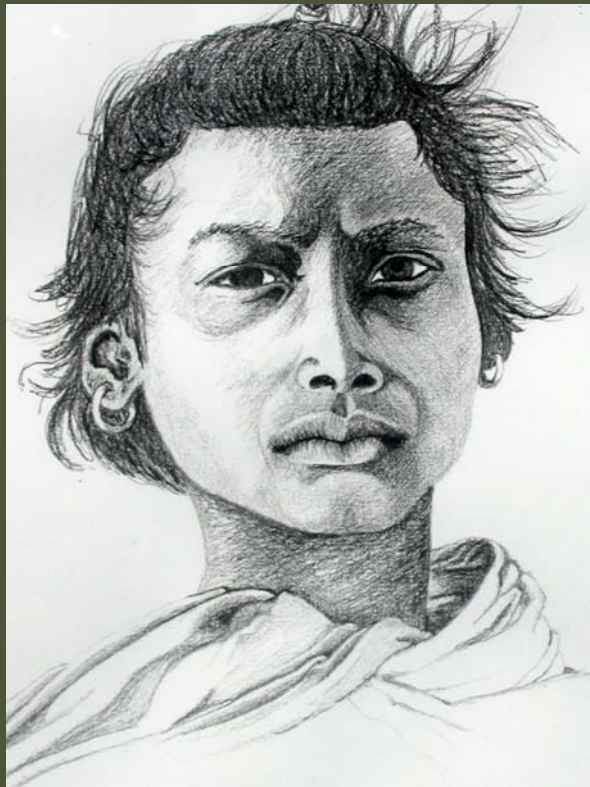


Bringing Our Community Home

The Ten Year Plan to End
Chronic Homelessness
Throughout Santa Barbara
County



Strategies of the Plan



- Prevention and Intervention
- Outreach, Engagement & Supportive Services
- Permanent Affordable Housing
- Economic Self-sufficiency
- Financial Sustainability
- Effective Implementation & Coordination

Bringing Our Community Home

