

























LITTER REMOVAL
NEXT 2 MILES

SEE
WEDNESDAY

ADOPT-A-HIGHWAY

The image shows a roadside scene with a utility pole on the right. A house with a red roof and a white fence is visible. In the background, there is a green hill. The sky is overcast. The foreground shows a road with a white van on the left and some green bushes on the right.





Diesel	1.29/gal
7.97	1.39/gal
7.97	1.49/gal
Diesel RV	1.34/gal

8:39



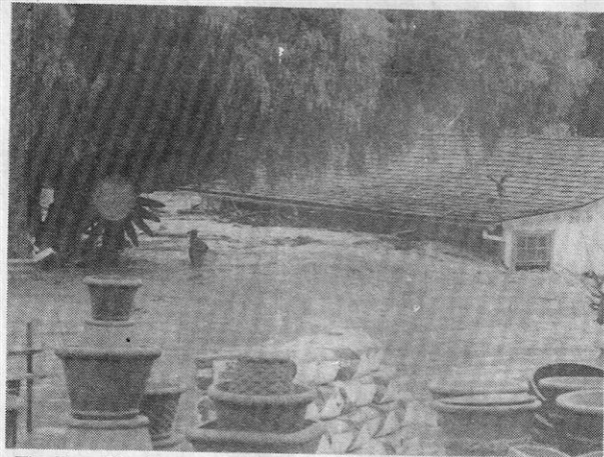




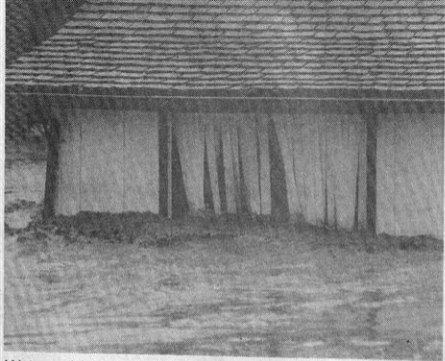


The intersection of Alamo Pintado and Mission Drive (Highway 246) was inundated by the rampaging waters of Alamo Pintado Creek Monday night.

Over eight inches of rain fell Sunday and Monday, causing hazardous road conditions throughout the valley (Photos by Bert Eting)



The Eye of the Day was under several feet of water Tuesday when Alamo Pintado creek rose to its roofline. (Photo by La Cinda Johnson)



Water and debris rush at the Solvang branch of Santa Barbara Bank and Trust at 2010 Mission Drive, on the corner of Hwy. 246 and Alamo Pintado, just after a tree branch broke through a window. The water line was above the windows and more than one-half of the front doors were underwater. (Photo by La Cinda Johnson)

TIMES

50 cents ■ Friday, February 6, 1998 ■ Our 116th year — No. 291

DEATHS SORE
IN BATTLE OF
NO. 1, NO. 2
TEAMS

page C-1

A PULITZER COMMUNITY NEWSPAPER

■ STORM AFTERMATH



Jeffrey May/Times

Above, employees from Sunstone Winery construct a new sign along Highway 246 in Santa Ynez. Right, Brent Freitas, owner of Eye Of The Day gardening center, cleans out what remains he can salvage in his flooded-out business in Solvang.



Garden shop feels nature's wrath



**SANTA BARBARA
BANK & TRUST**

Jeffrey May/Times

Clean-up workers mop-up at the flooded out Santa Barbara Bank and Trust in

Solvang. The bank is slated to do business from a trailer today.

year-old daughter, Daisy, was home and commandeered the shop to save what she could as the water began to rise.

"We were aware and we were ready, but what happened here flooded the building across the street and they're 10 feet above us," Freitas said. "We never expected this."

Friends and strangers have been dropping by with horse trailers to help collect intact pieces. Some, like a woman who arrived late in the afternoon with a six pack of beer and a hug, have stopped in to offer a hand since Tuesday.

Next door, on the same patch of property, Santa Barbara Bank and Trust was licking its

wounds from the 12 to 24 inches of water that gutted the inside. A washed out water line passed over the bottom of the ATM machine outside, but things were getting cleaned up by employees of a local engineering company which shot a high-pressure hose over the nearly clean parking lot while a few file cabinets air-dried outside.

Bank employees saved a few computers and some furniture so it wasn't a total loss, according to bank manager Chuck Pira.

"We thought that we would be washed out," he said.

■ See SY VALLEY, back page











SB-CO

CITY
LIMIT









