

RESOLUTION OF THE SANTA BARBARA COUNTY
BOARD OF SUPERVISORS

A RESOLUTION DECLARING THAT THOSE PORTIONS OF THE SANTA BARBARA BOTANIC GARDEN, 1212 MISSION CANYON ROAD, SANTA BARBARA, CALIFORNIA, LOCATED ON ASSESSOR'S PARCEL NOS. 23-340-13, 23-340-14 AND 23-340-15 ARE WORTHY OF PROTECTION UNDER CHAPTER 18A OF THE SANTA BARBARA COUNTY CODE, AND PRESCRIBING CONDITIONS TO PROTECT AND PRESERVE THEM AS ADDITIONS TO COUNTY LANDMARK #24.

RESOLUTION No. 2003-059

WHEREAS, the Santa Barbara County Board of Supervisors has considered the historical significance of those portions of the SANTA BARBARA BOTANIC GARDEN, 1212 Mission Canyon Road/ Santa Barbara, California, located on Assessor's Parcel Nos. 23-340-13, 23-340-14 and 23-340-15, in accordance with the requirements, standards and criteria contained in County Code, Chapter 18A, and finds that they are worthy of protection as a County Historic Landmark.

WHEREAS, the existing County Landmark #24 known as "MISSION DAM", located on Assessor's Parcel No. 23-340-14, should be expanded to include (a) the entirety of Assessor's Parcel No. 23-340-14 and the aqueduct located thereon, (b) Assessor's Parcel No. 23-340-13, and (c) Assessor's Parcel No. 23-340-15, said County Landmark to be known hereafter as the SANTA BARBARA BOTANIC GARDEN, MISSION DAM AND AQUEDUCT;

WHEREAS, the Santa Barbara Board of Supervisors finds that the SANTA BARBARA BOTANIC GARDEN, MISSION DAM AND AQUEDUCT meet the following criteria provided in County Code, Chapter 18A-3:

1. They exemplify or reflect special elements of the County's cultural, social, economic, political, archaeological, aesthetic, engineering, architectural or natural history;
2. They are identified with persons or events significant in local, state or national history, including Anna Dorinda Blaksley Bliss, Elmer Bissell and Frederick Clements;
3. They embody distinctive characteristics of a style, type, period or method of construction or are valuable examples of the use of indigenous materials or craftsmanship;

4. They are representative of the work of notable builders, designers, landscape architects or architects, including Ervanna Bowen Bissell, Beatrix Farrand, Lockwood de Forest Jr. and Lulah Maria Riggs;
5. They contribute to the significance of a historic area, being a geographically definable area possessing a concentration of historic, prehistoric, archaeological, or scenic properties, or thematically related grouping of properties, which contribute to each other and are unified aesthetically by plan or physical development;
6. They have a location with unique physical characteristics or a view or vista representing an established and familiar visual feature of a neighborhood, community, or the County of Santa Barbara;
7. They embody elements of design, detail, materials, or craftsmanship that represent a significant structural or architectural achievement or innovation;
8. They are one of the few remaining examples in the County, region, state, or nation possessing distinguishing characteristics of an architectural or historical type or specimen;

WHEREAS, the Santa Barbara County Board of Supervisors finds that the SANTA BARBARA BOTANIC GARDEN, MISSION DAM AND AQUEDUCT meet the following standards provided in County Code, Chapter 18A-4:

1. They have historic, aesthetic or special character or interest for the general public and are not limited in interest to a special group of persons;
2. Their designation as a County Historic Landmark does not require the expenditure of an unreasonable amount of money to carry out the purposes of County Code, Chapter 18A; and
3. Their designation as a County Historic Landmark does not infringe upon the right of a private owner thereof to make any and all reasonable uses of such Landmark which are not in conflict with the purposes of County Code, Chapter 18A.

WHEREAS, the Santa Barbara County Board of Supervisors deems that the SANTA BARBARA BOTANIC GARDEN, MISSION DAM AND AQUEDUCT is worthy of protection and preservation as an historical landmark;

NOW, THEREFORE, IT IS RESOLVED as follows:

1. The premises defined herein as the SANTA BARBARA BOTANIC GARDEN, MISSION DAM AND AQUEDUCT, 1212 Mission Canyon Road, Santa Barbara, California, located on Assessor's Parcel Nos. 23-340-13, 23-340-14 and 23-340-15, meet the eligibility criteria

and selection standards for a County Historic Landmark as described in County Code, Chapter 18A, as established by evidence presented to the Board;

2. The Santa Barbara County Board of Supervisors hereby designates the SANTA BARBARA BOTANIC GARDEN, MISSION DAM AND AQUEDUCT, Assessor's Parcel Nos. 23-340-13, 23-340-14 and 23-340-15, as a Historic Landmark, subject to the following conditions:

A. Historic Structures and Features

- i. Demolition, removal or destruction, partially or entirely, of the following structures or features, as depicted on the attached map, shall be prohibited unless express consent in writing is first had and obtained from the Historic Landmarks Advisory Commission, with reasonable conditions imposed as deemed necessary;
 - a) Mission Dam and Aqueduct
 - b) "Indian Steps"
 - c) Entry Steps (1948)
 - d) Information Kiosk (1937)
 - e) Original Library (1941)
 - f) Campbell Bridge
 - g) Caretaker's Cottage (1927); provided however, that the Board of Supervisors hereby expressly consents to the relocation of the Caretaker's Cottage to another site in the Santa Barbara Botanic Garden.
- ii. No exterior alterations, additions or changes (other than normal maintenance and repair) to the structures or features identified in subparagraph 2-A.i. above shall be made unless and until all plans therefor have first been reviewed by the Historic Landmarks Advisory Commission and approved or modified, and reasonable conditions imposed as deemed necessary.

B. Continued Use as Botanic Garden

- i. The Santa Barbara Botanic Garden has historically functioned as a traditional botanical garden holding documented collections of living plants for purposes of conservation, scientific research, display and education. The historic landscape design concept of the SANTA BARBARA BOTANIC GARDEN, MISSION DAM AND AQUEDUCT is characterized by a system of trails through and around plant communities, displays, exhibits and structures. Such plant communities, displays, and exhibits have, with only limited exceptions, historically been dedicated to plants native to California and the California Floristic Province. No changes to the SANTA BARBARA BOTANIC GARDEN, MISSION DAM AND AQUEDUCT shall be made which substantially deviate from the foregoing historic landscape design concept or historic use of the landmark property unless express consent in writing is first had and obtained from the Historic Landmarks Advisory Commission, with reasonable conditions imposed as deemed necessary.

- ii. Nothing in this subparagraph 2.B. shall be construed so as to control or restrict the change, maintenance, repair, relocation, replacement, or updating of plant communities, temporary or permanent displays, exhibits, trails, public areas, interpretive materials or existing structures, and such changes, maintenance, repairs, relocation, replacement and updating shall not require review and approval by the Commission. Any construction or installation of new structures, features or facilities on the landmark property shall not substantially deviate from, or substantially conflict with, the historic landscape design concept or historic use as set forth above, and shall not cause the landmark property to substantially deviate from, or substantially conflict with, the eight (8) criteria from County Code Chapter 18A-3 listed above.
1. The Board of Supervisors expressly finds that all other existing buildings located on Assessor's Parcel Nos. 23-340-13, 23-340-14 and 23-340-15, other than those listed in subparagraph 2.A.i. above, do not meet the eligibility criteria for historic landmark status under County Code Chapter 18A and shall not be subject to the conditions and restrictions contained herein.

PASSED, APPROVED, AND ADOPTED by the Santa Barbara County Board of Supervisors, Santa Barbara, this 25th day of February ____, 2003, by the following vote:

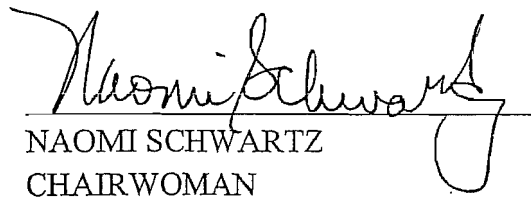
AYES: Supervisors Schwartz, Rose, Marshall, Gray, Centeno

NOES: None

ABSTAIN: None

ABSENT: None


ATTEST:
MICHAEL F. BROWN
CLERK OF THE BOARD



NAOMI SCHWARTZ
CHAIRWOMAN
SANTA BARBARA COUNTY
BOARD OF SUPERVISORS

BY: Robert Cohen
Deputy

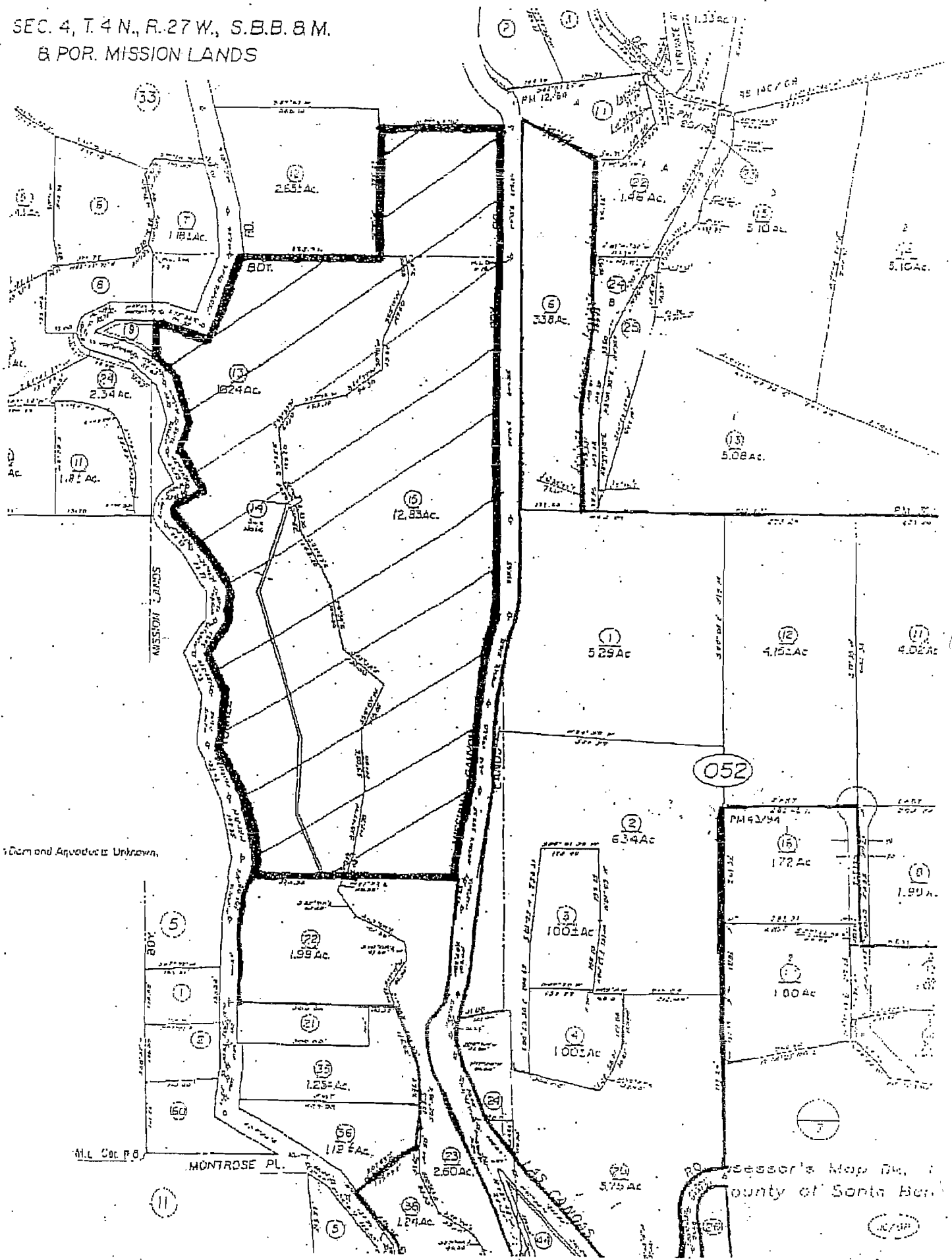
Approved as to form:



Deputy County Counsel

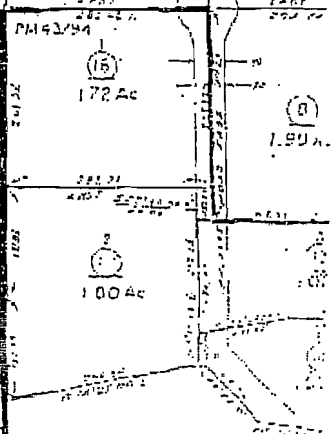
EXHIBIT "A"

SEC. 4, T. 4 N., R. 27 W., S.B.B. 8 M.
 & POR. MISSION LANDS



1 Dam and Aqueduct Unknown.

052



Surveyor's Map No. 1
 County of Santa Bern.



1 Mission Dam and Aqueduct

2 Indian Steps

3 Entry Steps

4 Information Kiosk

5

Blaksley Library

6

Campbell Bridge

7

Caretaker's Cottage

1

(

.

||

+

.

.

.

.

.....