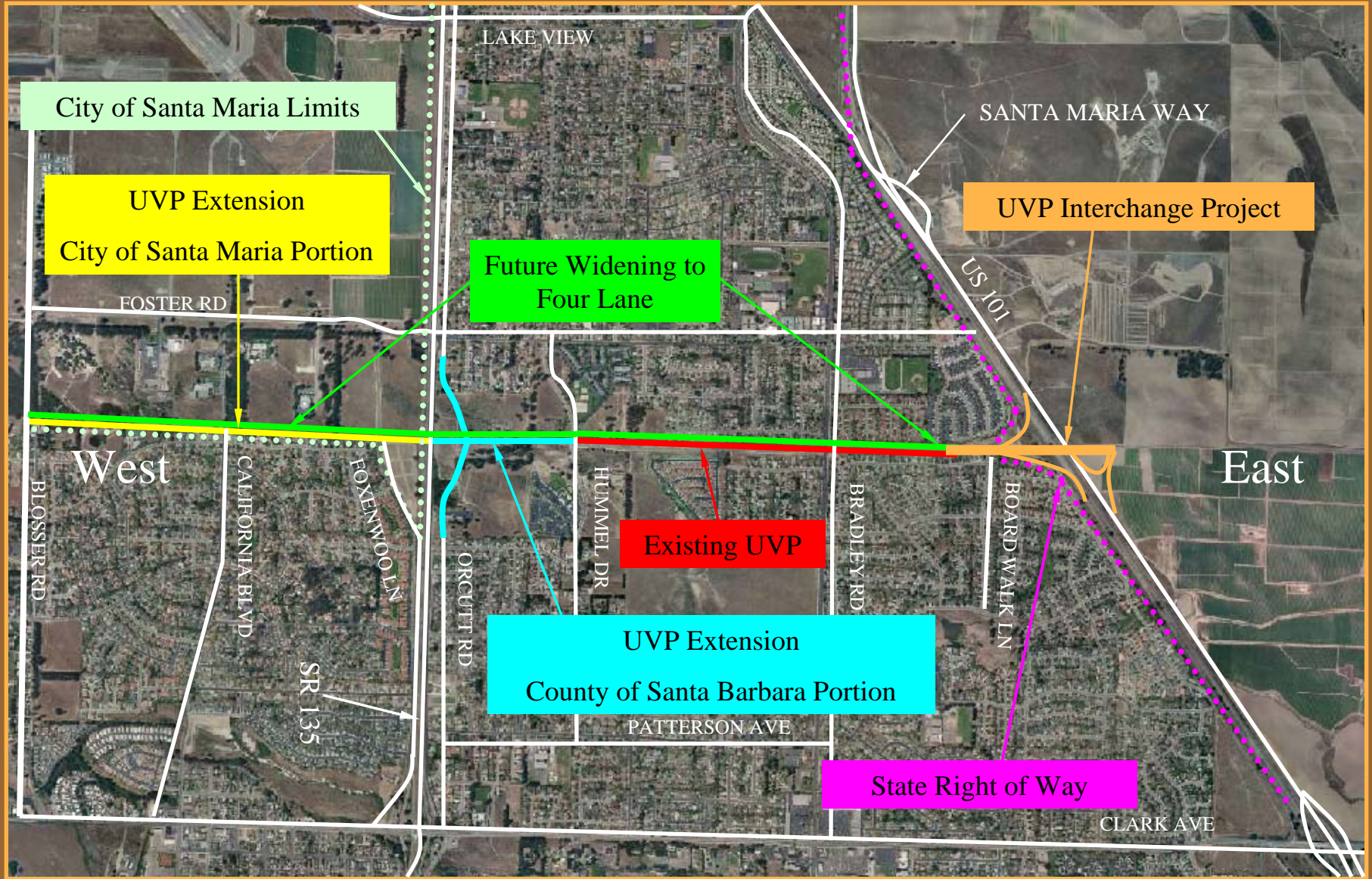


ATTACHMENT 1 UVP CORRIDOR: PLANNED SEGMENTS

North



South

ATTACHMENT 2 – FUTURE UVP

North



City of Santa Maria Limits

Former UVP
City Portion

SANTA MARIA WAY

HWY 101

LAKE VIEW

ORCUTT RD

BLOSSER RD

FOSTER RD

SR 135

US 101

West

East

UNION VALLEY PARKWAY

Proposed UVP Corridor

BRADLEY RD

Future UVP
County Portion

SOLOMON RD

SR 1

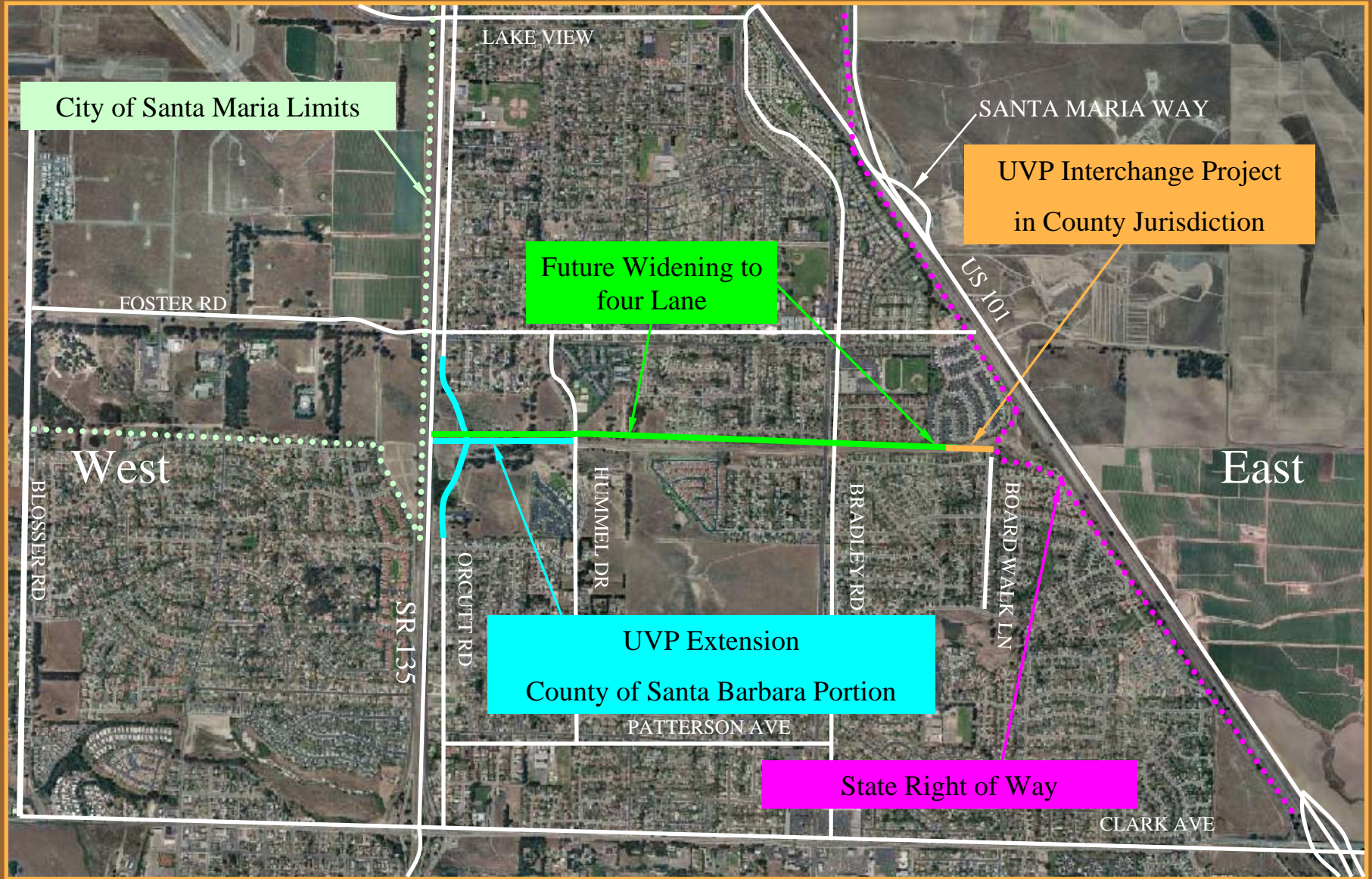
CLARK AVE

South

ATTACHMENT 3

UVP CORRIDOR: PLANNED SEGMENTS UNDER COUNTY JURISDICTION

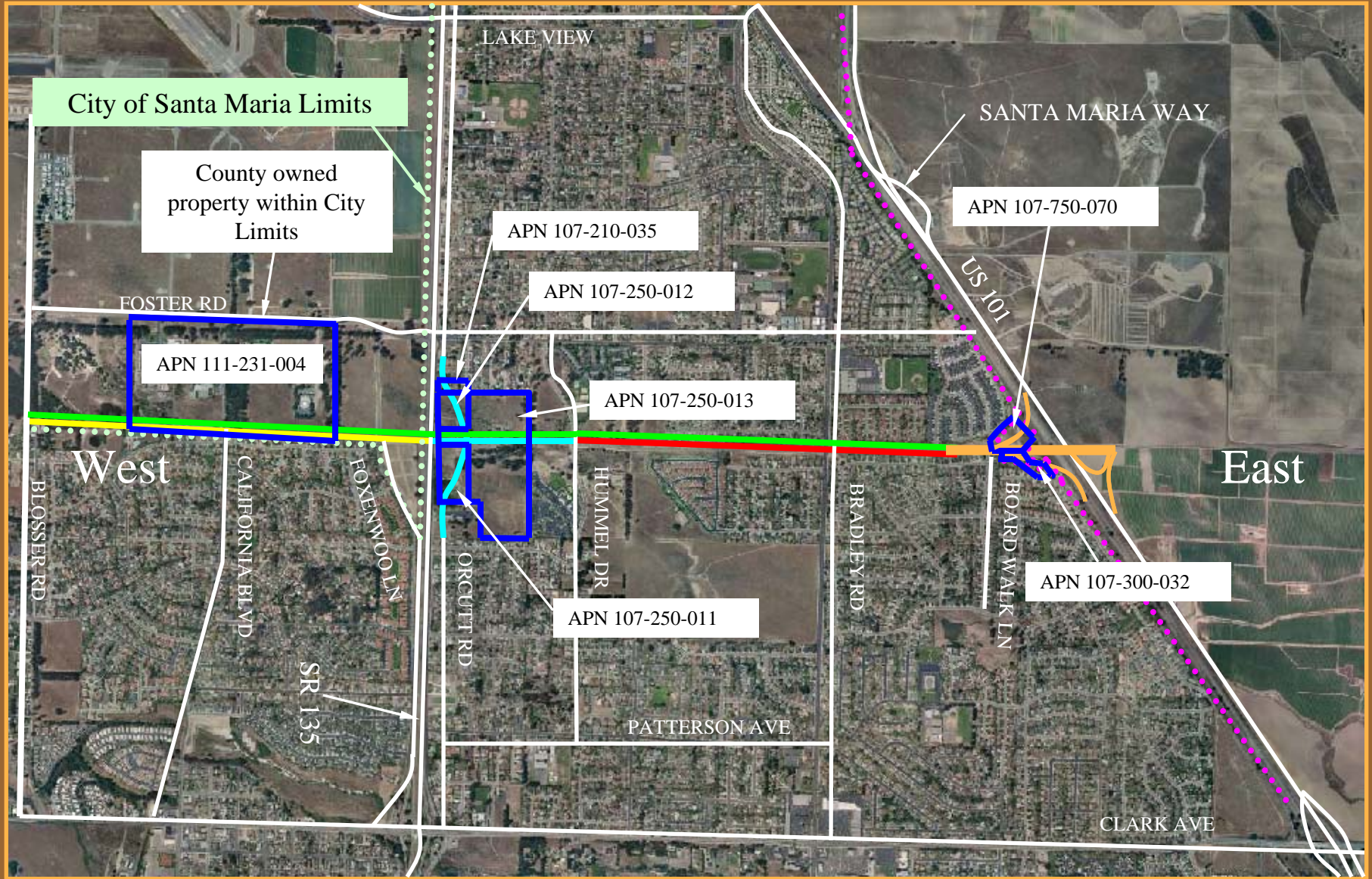
North



South

ATTACHMENT 4 – AFFECTED PARCELS

North



South