



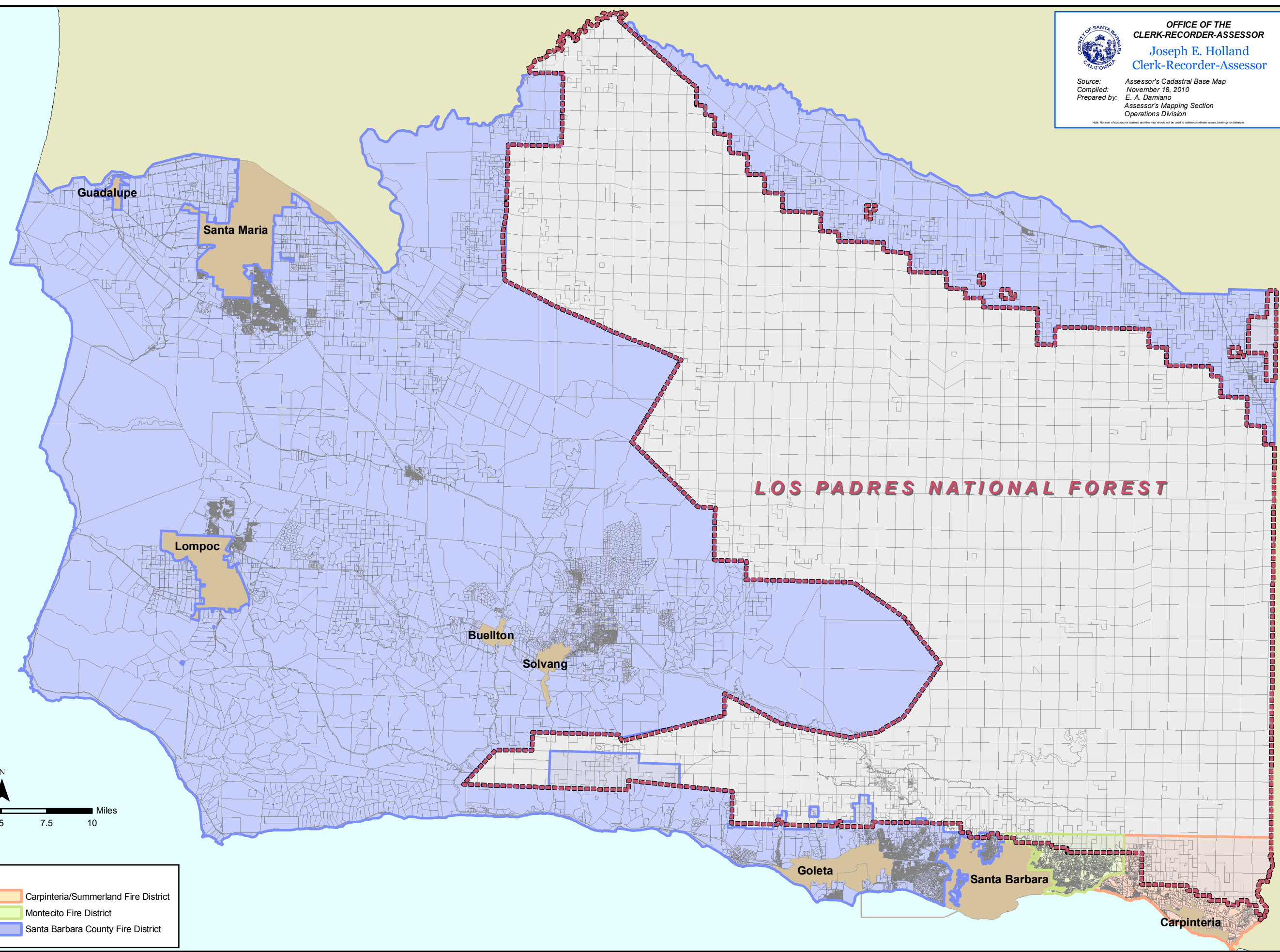
OFFICE OF THE
CLERK-RECORDER-ASSESSOR

Joseph E. Holland
Clerk-Recorder-Assessor

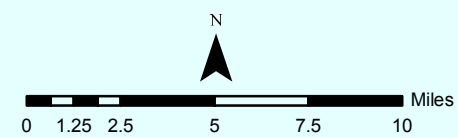
Source: Assessor's Cadastral Base Map
Compiled: November 18, 2010
Prepared by: E. A. Damiano
Assessor's Mapping Section
Operations Division

Note: No level of accuracy is claimed and this map should not be used to obtain coordinate values, bearings or distances.

Parcels 2010_0712.apr



LOS PADRES NATIONAL FOREST



Legend

Parcels within Los Padres Forest Bndy	Carpinteria/Summerland Fire District
Los Padres National Forest Boundary	Montecito Fire District
Cities	Santa Barbara County Fire District