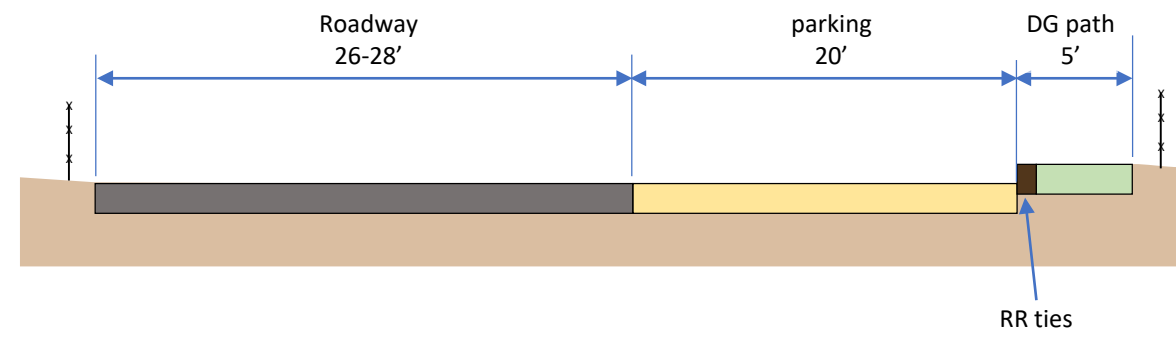
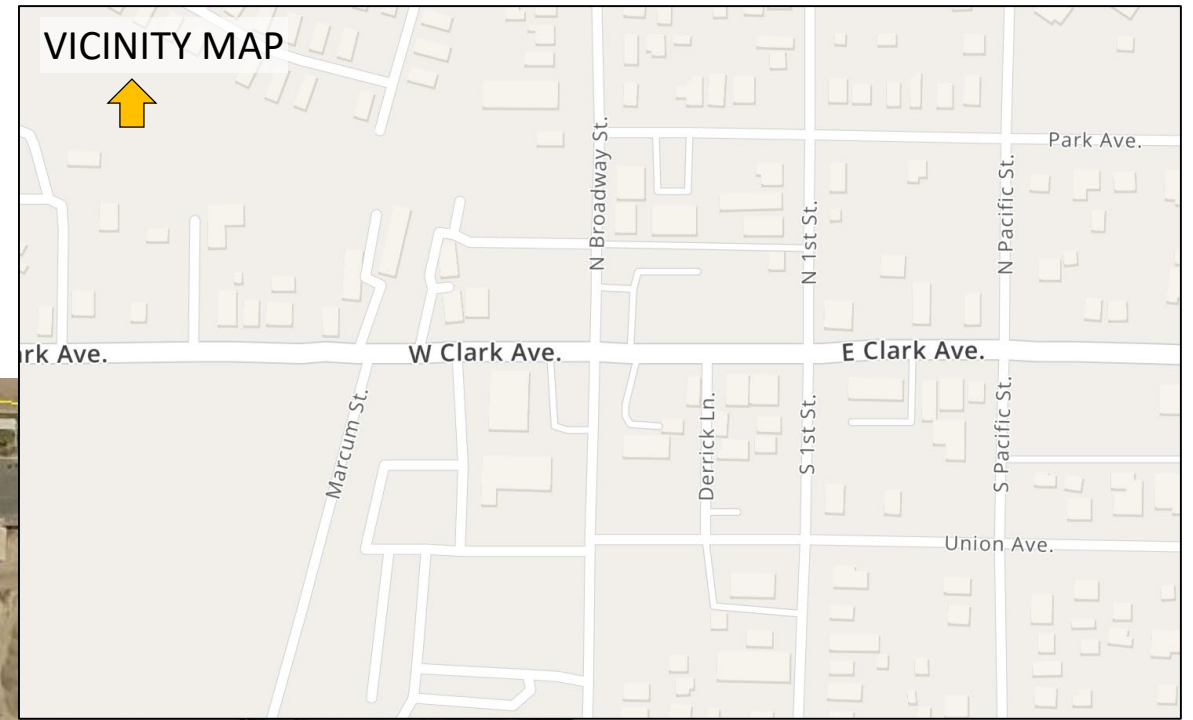


# MARCUM STREET PARKING IMPROVEMENTS

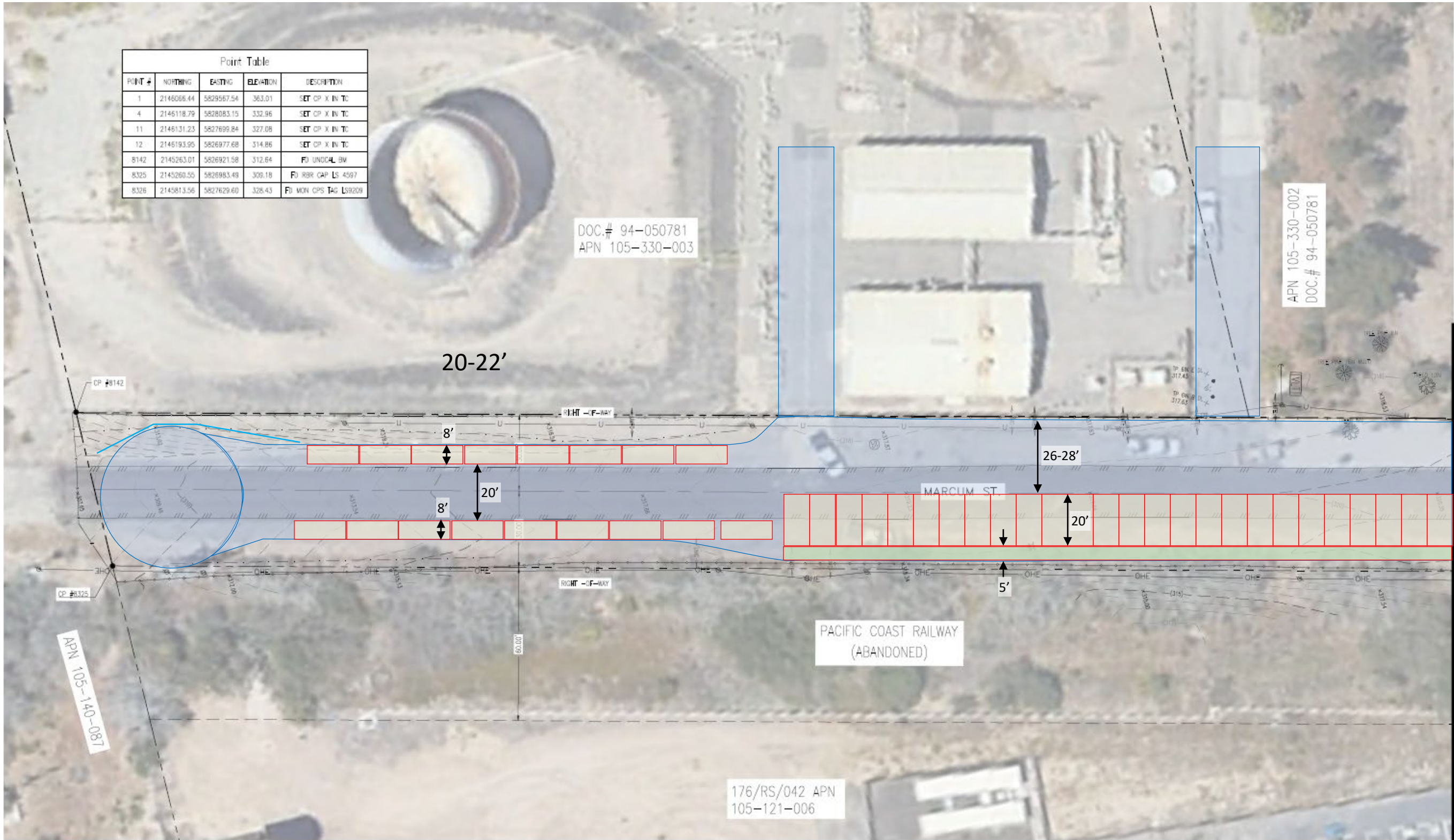
## Concept plans 3-7-24



Point Table				
POINT #	NORTHING	EASTING	ELEVATION	DESCRIPTION
1	2146066.44	5829567.54	363.01	SET CP X IN TC
4	2146118.79	5828083.15	332.96	SET CP X IN TC
11	2146131.23	5827899.84	327.08	SET CP X IN TC
12	2146193.95	5826977.68	314.86	SET CP X IN TC
8142	2145263.01	5826921.58	312.64	FD UNDCAL BM
8325	2145260.55	5826983.49	309.18	FD RBR CAP LS 4597
8326	2145813.56	5827629.60	328.43	FD MON GPS TAG L59208

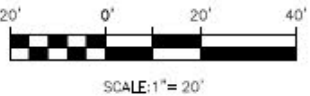
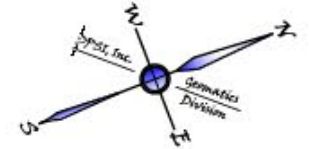
- LEGEND**
- RECORD BOUNDARY
  - RECORD CENTERLINE
  - (140)--- CONTOUR - MAJOR
  - (135)--- CONTOUR - MINOR
  - /// /// /// EDGE OF PAVEMENT
  - - - - - TOP OF SLOPE
  - FENCE - BARBED
  - FENCE - CHAIN
  - FENCE - WOOD
  - - - - - GRADE BREAK
  - CONCRETE
  - OHE --- OVERHEAD ELECTRIC
  - U --- OVERHEAD UTILITY

- SYMBOLS**
- x 500.00 SPOT ELEVATION
  - BOLLARD
  - ⊕ POWER POLE
  - ⊖ GUY
  - ⊙ SEWER MANHOLE
  - ⊕ UTILITY POLE
  - ⊙ IRRIGATION CONTROL VALVE
  - ⊙ BACKFLOW PREVENTER
  - ⊙ FIRE HYDRANT
  - ⊙ WATER METER
  - ⊙ VAULT
  - UNDERGROUND WARNER - GAS
  - UNDERGROUND WARNER - OIL
  - UNDERGROUND WARNER - TELE
  - UNDERGROUND WARNER - COMM
  - UNDERGROUND WARNER - FIBER
  - UNDERGROUND WARNER - WATER
  - ⊙ TREE - OAK
  - ⊙ TREE - PINE



SEE SHEET 2

MATCH LINE



**PROJECT BENCHMARK**  
 SANTA MARIA VALLEY CONTROL MONUMENT NUMBER 1118. FOUND 2" BRASS DISK IN MONUMENT WELL, STAMPED "S.B.Co. GPS CONTROL 1992 PLS 5470 STA. 1118", WAS HELD AS THE PROJECT BENCHMARK.  
 ELEVATION = 355.86' (NAVD 88 DATUM)

**BASIS OF BEARING**  
 THE HORIZONTAL DATUM OF THE CONTROL IS NAD(83) 1992, AND CONTROL POSITIONS HAVE BEEN DERIVED FROM TIES TO FIVE STATIONS OF THE SANTA MARIA VALLEY CONTROL NETWORK PER MAP BOOK 147 PAGES 57-61 AS FILED IN THE COUNTY OF SANTA BARBARA RECORD OF SURVEYS, STATIONS 1006, 1009, 1012, 1117 & 1118.

THE BEARING SHOWN HEREON ARE REFERENCED TO CCS83, ZONE 5 GRID NORTH. THE POSITIONS OF THE FIVE POINTS NOTED ABOVE HAVE BEEN USED AS THE BASIS OF BEARINGS FOR THIS SURVEY.

**BOUNDARY DISCLAIMER**  
 BOUNDARY LINES AND THE RIGHT-OF-WAYS SHOWN HEREON ARE BASED ON RECORD INFORMATION FROM RECORDED MAPS PER THE COUNTY AND CAL TRANS. THE LINES ARE BASED ON MINIMAL FOUND MONUMENTS FOR ORIENTATION ONLY AND IS NOT INTENDED TO BE A BOUNDARY SURVEY.

**SURVEYOR'S STATEMENT**  
 I HEREBY STATE THAT THIS MAP CORRECTLY REPRESENTS A SURVEY MADE BY ME OR UNDER MY DIRECTION UNDER THE PROVISIONS OF SECTION 8726 OF THE PROFESSIONAL LAND SURVEYORS ACT AND THAT SAID SURVEY CORRECTLY SHOWS THE TOPOGRAPHIC FEATURES. THE CONTOURS ARE COMPUTER GENERATED.

176/RS/042 APN 105-121-006



**DPSI**  
 DIVERSIFIED PROJECT SERVICES INTERNATIONAL  
 BAYHILL, CA SAN LUIS OBISPO  
 (805) 371-2900 (805) 250-2881

TOPOGRAPHIC SURVEY/ TASK ORDER #8  
 CLARK AVE AND MARCUM AVE  
 COUNTY OF SANTA BARBARA TRANSPORTATION DEPARTMENT  
 COUNTY OF SANTA BARBARA, CA  
 ENGINEER: COSB | DATE: 02.21.2024 | SCALE: 1" = 100'

SEE SHEET 1  
MATCH LINE

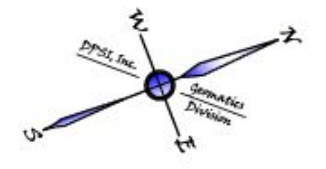


**LEGEND**

---	RECORD BOUNDARY
- - - -	RECORD CENTERLINE
---(140)---	CONTOUR - MAJOR
---(135)---	CONTOUR - MINOR
	EDGE OF PAVEMENT
-----	TOP OF SLOPE
-----	FENCE - BARBED
-----	FENCE - CHAIN
-----	FENCE - WOOD
-----	GRADE BREAK
-----	CONCRETE
OHE	OVERHEAD ELECTRICAL
U	OVERHEAD UTILITY

**SYMBOLS**

x 500.00	SPOT ELEVATION
•	BOLLARD
⊕	POWER POLE
←	GUY
⊗	SEWER MANHOLE
⊕	UTILITY POLE
⊕	IRRIGATION CONTROL VALVE
⊕	BACKFLOW PREVENTER
⊕	FIRE HYDRANT
⊕	WATER METER
⊕	Vault
---	UNDERGROUND MARKER - GAS
---	UNDERGROUND MARKER - OIL
---	UNDERGROUND MARKER - TELE
---	UNDERGROUND MARKER - COMM
---	UNDERGROUND MARKER - FIBER
---	UNDERGROUND MARKER - WATER
⊕	TREE - OAK
⊕	TREE - PINE



**DPSI**  
**DIVERSIFIED PROJECT SERVICES INTERNATIONAL**  
 1445 FIELD, CA SAN LUIS OBISPO  
 (844) 371-2890 (805) 250-2891

TOPOGRAPHIC SURVEY/TASK ORDER #8			
CLARK AVE AND MARCUM AVE. COUNTY OF SANTA BARBARA TRANSPORTATION DEPARTMENT COUNTY OF SANTA BARBARA, CA			
ENGINEER:	COSB	DATE:	02.21.2024
CO. SURVEYOR:	DPSI, INC.	SCALE:	1"=20'
		ORIGINAL DWG NO.	