



# Burned Area Emergency Response



## WHITTIER FIRE BAER ASSESSMENT



# WHITTIER BAER ASSESSMENT

- BARC Map
- Soil Burn Severity Map
- Establish Watershed Response
- Determine Threats to VAR's
  - Human Life and Safety
  - Property
  - Natural Resources
  - Cultural Resources
- Propose Treatments



Tecolote Creek highlands

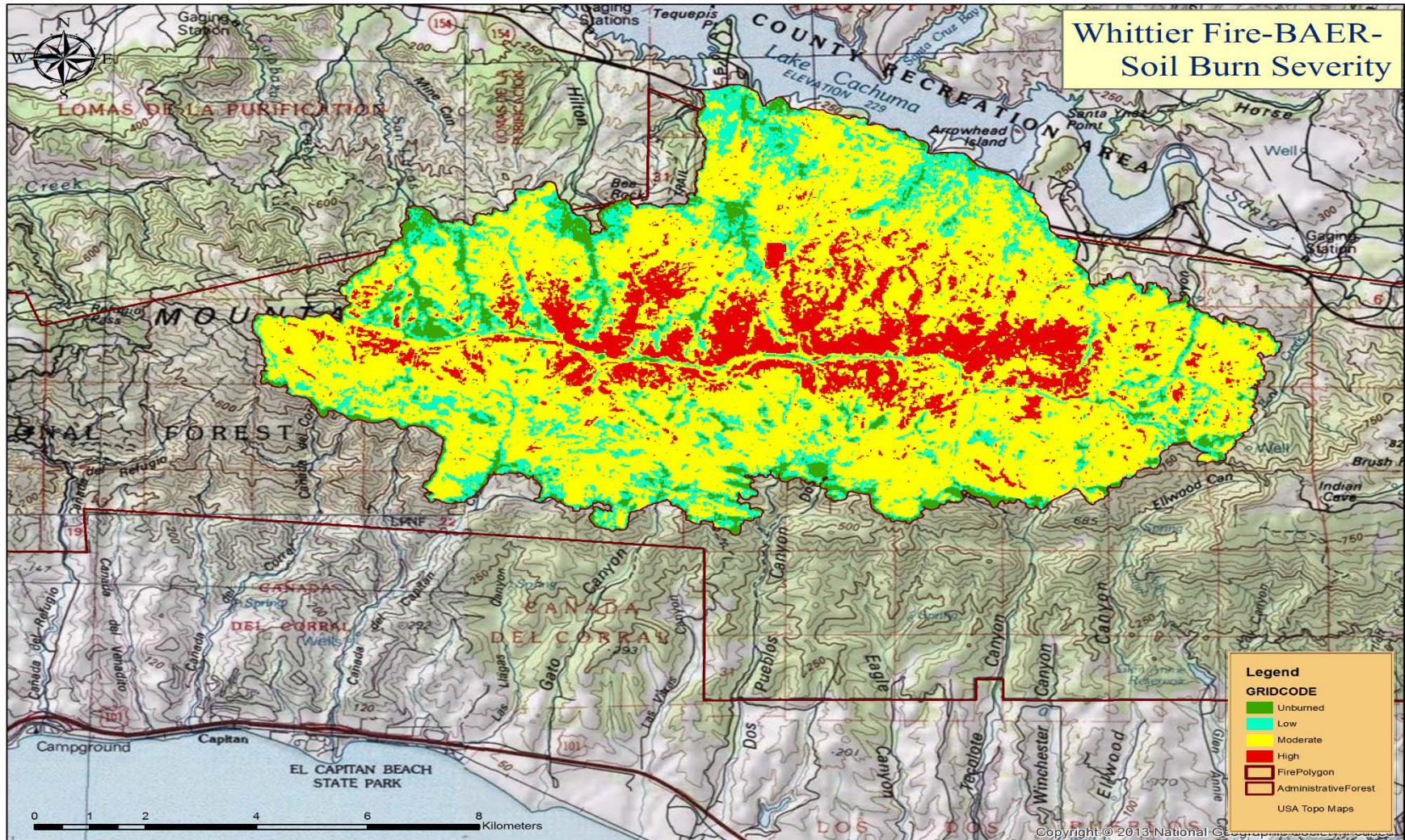
- Develop BAER Report
  - 7 Days After Containment
- Implementation

# SOIL ASSESSMENT - METHODOLOGY

- Field verify Soil Burn Severity and water repellancy
- Develop Soil Burn Severity Map
- Develop erosion prediction maps
- Evaluate treatments



# WHITTIER FINAL SOIL BURN SEVERITY MAP

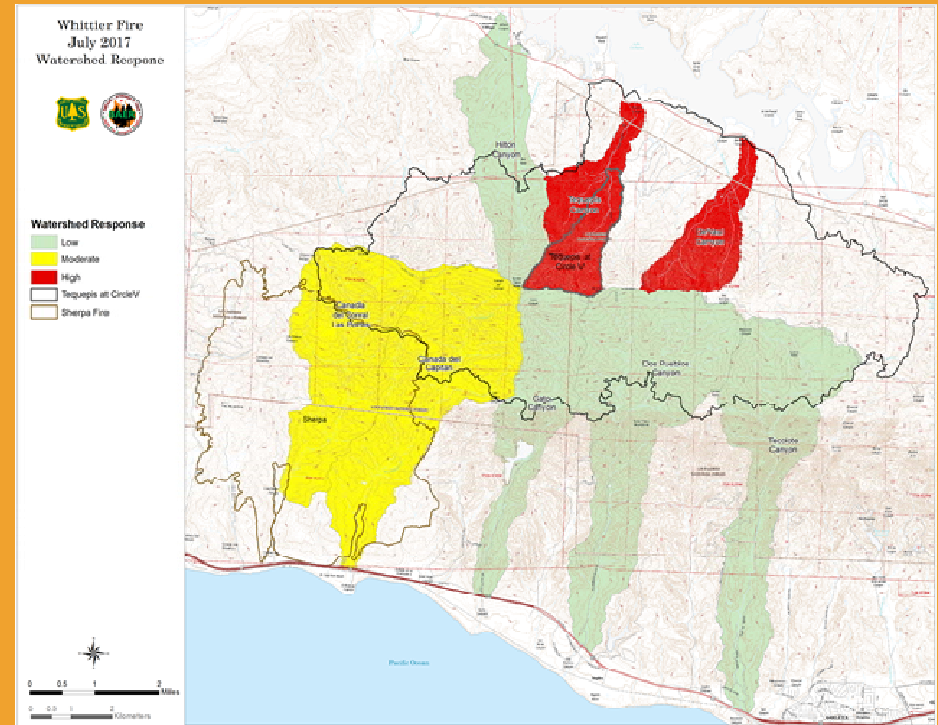
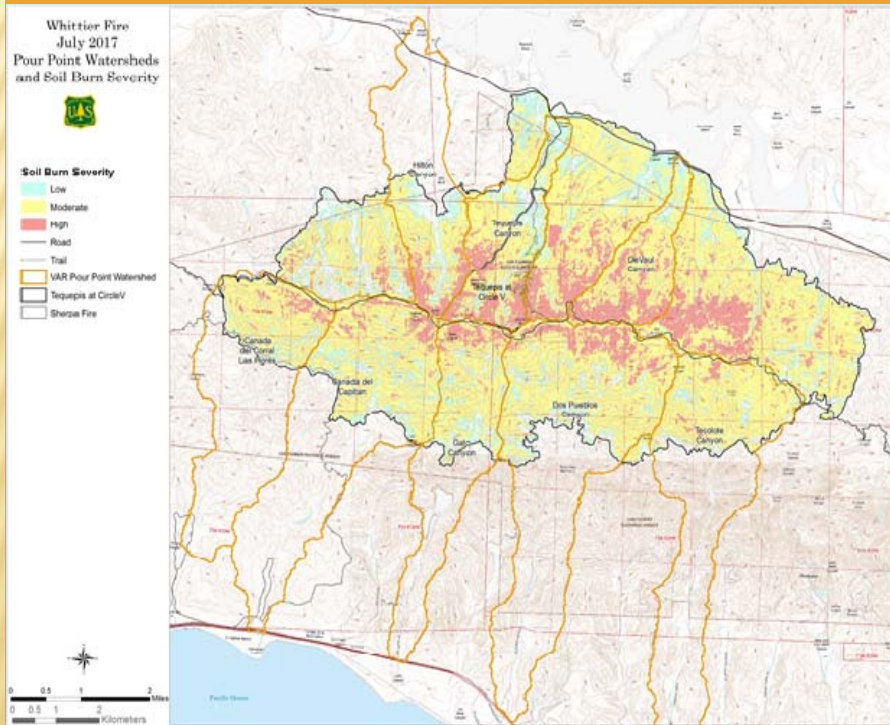


## Overall Expected Watershed Response

High - North slope watersheds had higher total % area burned, some of which burned over 90% with moderate and high SBS

Moderate - El Capitan and Corral Cr still have moderate potential due to overlap with Sherpa Fire

Low - These watersheds had an average area of 50% burned, despite most of this being high and mod SBS.



# GEOLOGIC HAZARDS

Geological Hazards within and below the burn area include:

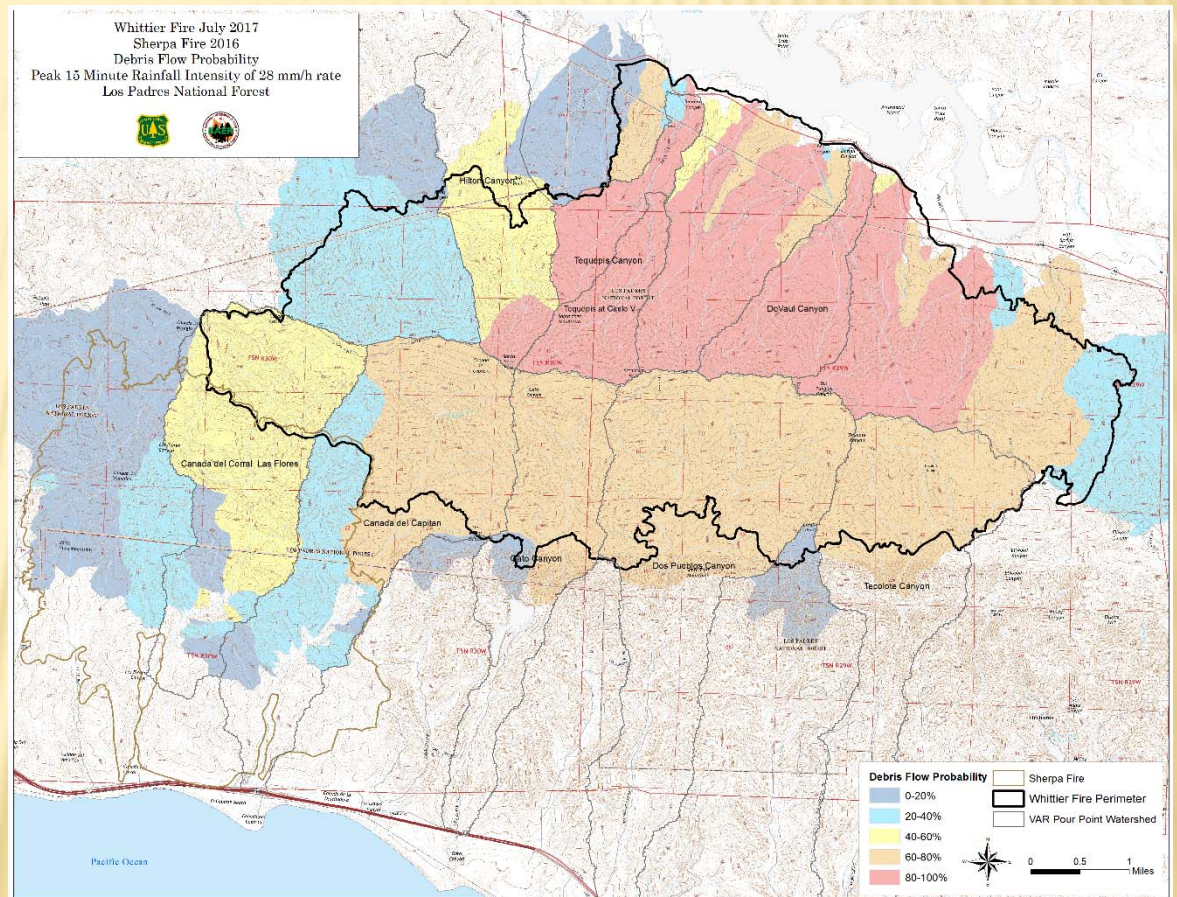
- Surface erosion
- Dry ravel
- Rockfall
- Landslides
- Slope failures
- Debris flow



# GEOLOGIC HAZARDS

## Debris Flows:

- There is an elevated potential for debris flows to occur in fire area for at least 3- years after the fire
- The probabilities for debris flows to occur is 80-100% for the majority of the main drainages in the burn area
- Predicted volumes for these debris flows in the main drainages are 10K-100K cubic meters



# VALUES AT RISK

---

- ✘ Costal communities in El Capitan, Los Pueblos, and Tecolote canyons
- ✘ Circle V Ranch and Rancho Alegre Boys scout Camp, and private landowners
- ✘ Hwy 154 and 101 undersized culverts
- ✘ Water quality of drinking water for Santa Barbara and Goleta
- ✘ Sedimentation of Lake Cachuma



# WHITTIER TREATMENTS

- ✘ Pursue helimulching high erosion areas on FS lands above L. Cachuma
- ✘ Noxious Weed Detection Survey
- ✘ Road Stormproofing and Closure Treatments
- ✘ Trail Stormproofing Treatments
- ✘ Protection and Safety Treatments (gates, signs)
- ✘ Interagency Coordination
- ✘ Fisheries Recommendations
- ✘ Monitoring Treatment Effectiveness

# Treatment by Ownership

Forest Service: 1262 Acres

Private: 498 Acres

BOR: 177 Acres

