



# Onstott Road



# Opening

**Board of Supervisor's Hearing July 10, 2007**



## Overview

- Vicinity Map / Closure Location
- History
- Purpose and Need
- Traffic Data
- Summary of Benefits
- Staff Recommendations

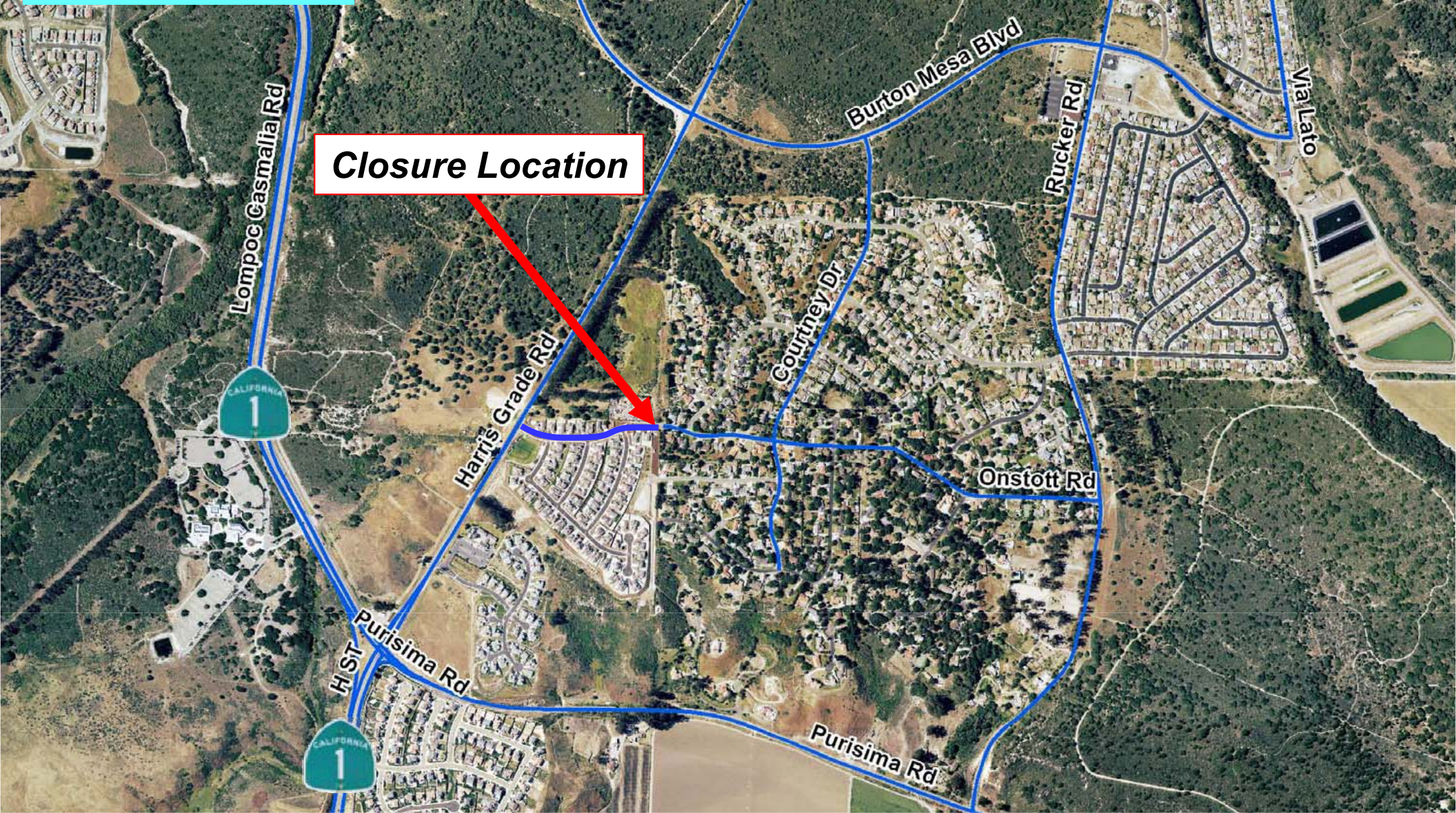


# Onstott Road Opening

Board of Supervisor's Hearing July 10, 2007



## Vicinity Map





## Project History

### • Roadway History

- Entire length of roadway was included in the 1980 County Comprehensive Plan
- The eastern portion was constructed as part of the Mesa Oaks development
- The western portion was constructed as part of the Bluffs development project

### • Closure History

- The Bluffs Final EIR completed in April 2001 – included roadway closure
- Final EIR Certification and development conditions approved by BOS in February 2002
- Conditions of the development included future possible opening by County Traffic Engineer action





## Project History

### • Community Outreach

- During the Summer of 2006, a request to open Onstott Rd was made by residents from both the Bluffs and Mesa Oaks neighborhoods.
- The County sent **540** letter surveys to property owners:
  - **52** (9.6%) responded in favor of opening the roadway
  - **62** (11.4%) responded against
  - **426** (78.8%) did not respond

### • Traffic Engineering Committee (TEC)

- On September 13, 2006, The County of Santa Barbara's Traffic Engineer recommended opening the road to the TEC based on a traffic analysis
  - TEC is comprised of traffic and civil engineering professionals, emergency services personnel, utility representatives, and other professionals
  - Members voted **5 to 1** with **2** abstentions to open the roadway





## Purpose and Need

- **Improve circulation**
  - Circulation is improved within the Bluffs and Mesa Oaks
  - Evenly distributes traffic volumes along Onstott Road as planned in the 1980 Circulation Element
  - Provides a more direct route to surrounding arterial roadways
- **Improve Emergency Services response time**
  - Emergency vehicles will be able to more quickly travel along Onstott Road.
- **Reduce maintenance and liability and increase public safety**





# Onstott Road Opening

Board of Supervisor's Hearing July 10, 2007



## Traffic Data – Onstott Road

**Classification:** Collector    **Widths:** The Bluffs - 40 Feet    Mesa Oaks - 40.5 Feet

### Traffic Volumes

	West End (Near Harris Grade Rd)	At Closure	East End (Near Rucker Rd)
Existing Volumes	500 vpd	0 vpd	1350 vpd
Forecasted Volumes	800 vpd	400 vpd	950 vpd

### Traffic Speeds

	West End (Near Harris Grade Rd)	At Closure	East End (Near Rucker Rd)
Existing Speeds	26 mph	0 mph	28 mph
Forecasted Speeds	28 mph	26 mph	28 mph

### Average Travel Time

Onstott Rd / Courtney Dr Intersection to Harris Grade Rd / Purisima Rd Intersection

Existing Travel Time                      **3:48**                      (Via Burton Mesa Blvd)

Forecasted Travel Time                      **2:10**





## Summary of Benefits

- Complies with the 1980 Comprehensive Plan Circulation Element
- More evenly distributes traffic volumes in area
- Shorter travel times
- Provides more options to motorists
- Minimizes delays to emergency vehicles and provides additional evacuation routes
- Eliminates the cost and liability of maintaining closure







## Staff Recommendations

- County of Santa Barbara Department of Public Works recommends that your Board direct the Department to open Onstott Road

*The County Public Works Department will continue to monitor Onstott Road's operations and recommend to your Board any needed improvements.*





# Onstott Road Opening



Board of Supervisor's Hearing July 10, 2007