

# CSA 3, CSA 31 and NCLD Benefit Assessment and Services Presentation

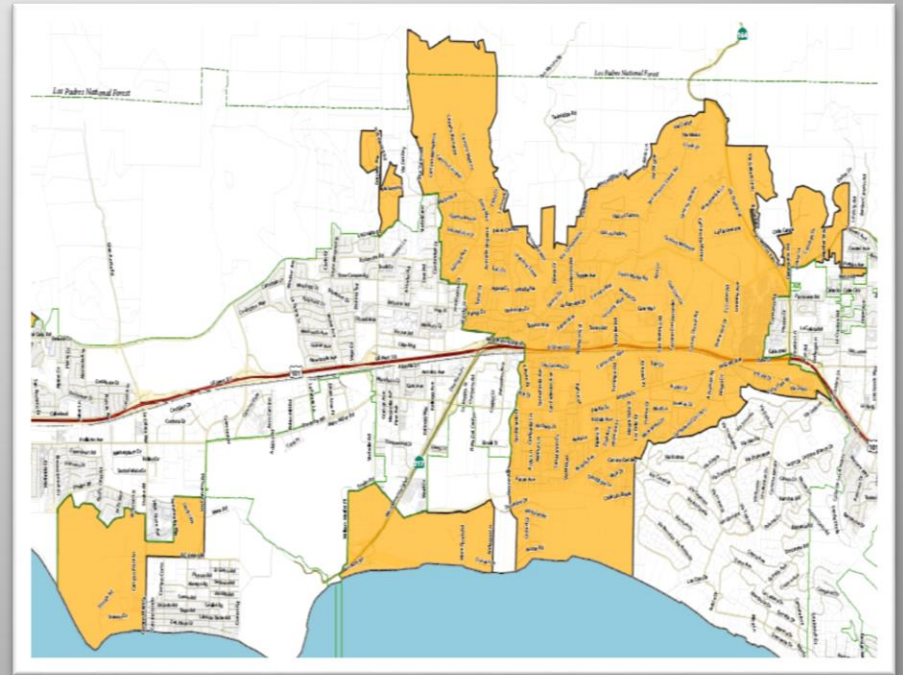
## Fiscal Year 2019-2020



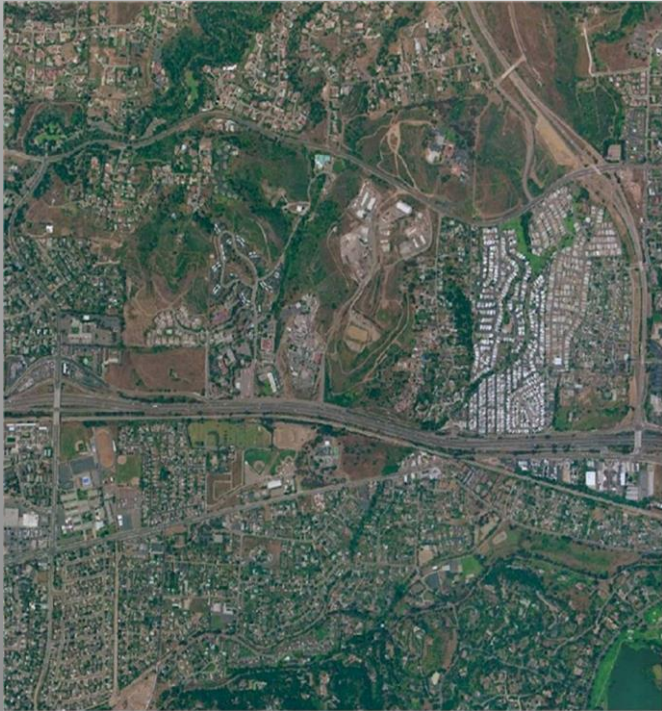
# Goleta Valley CSA 3

Created in 1963. Provides:

- Streetlighting for unincorporated Goleta and Santa Barbara
- Open space and park maintenance and improvements
- Median and tree trimming maintenance and improvements



# Goleta Valley CSA 3 – Funding



- Benefit assessment funds:
  - Streetlighting operation and maintenance
- Property tax revenue funds:
  - Streetlighting operation and maintenance
  - Median and open space maintenance and improvements
  - Additional street tree trimming around street lights
  - Park related equipment purchases and activities



# Goleta Valley CSA 3 – Fund Status

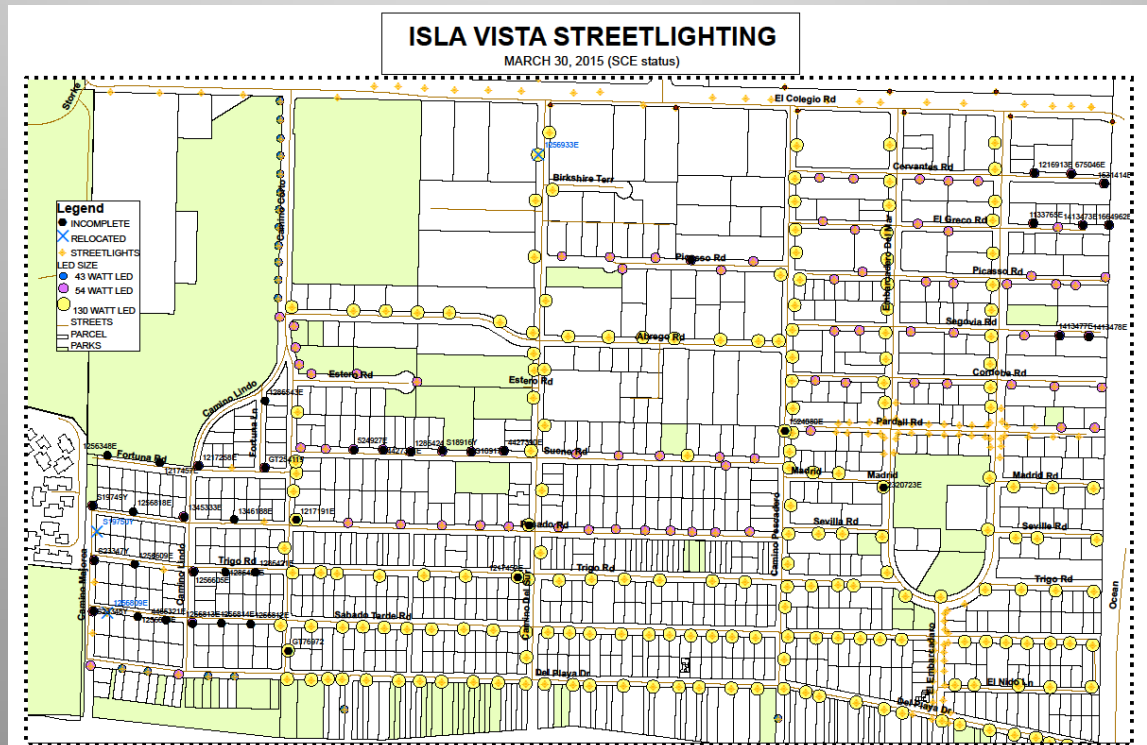
- The proposed Benefit Assessment is unchanged from last year with a base rate of \$24 per year
- Fund Balance is acceptable



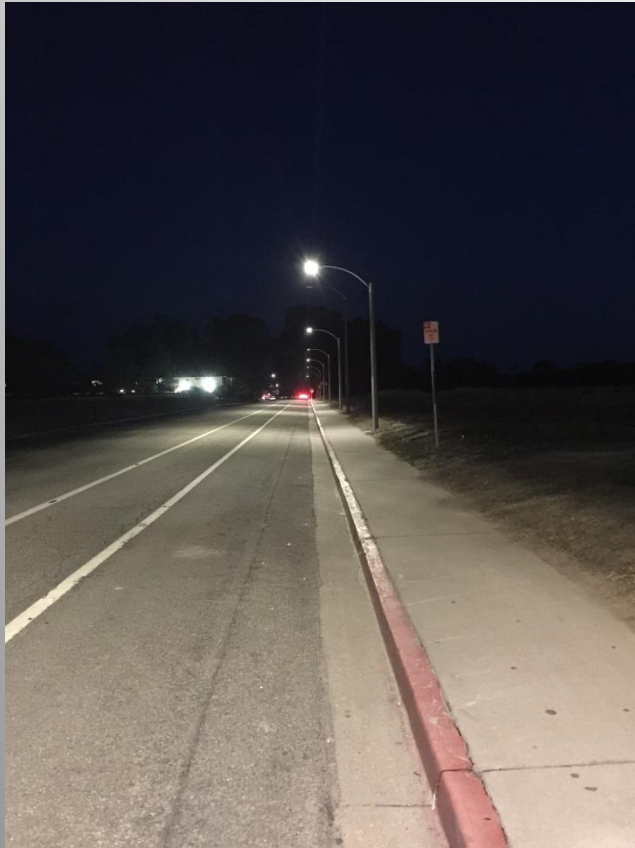
# Isla Vista CSA 31

Created in 1963. Provides:

- Street lighting for Isla Vista
- Streetscape and landscape installation and maintenance



# Isla Vista CSA 31 – Funding



- Streetlighting benefit assessment and property taxes fund streetlighting operation and maintenance
- Property tax revenue funds hardscape and landscape improvements
- CDBG Grant, UCSB and General Funds funded recent streetlighting improvements

# Isla Vista CSA 31 – Fund Status

- The proposed Benefit Assessment is unchanged from last year with a base rate of \$12.93 per year
- Fund Balance is acceptable



# North County Lighting District

- Created in 1994
- Provides streetlighting in the communities of Orcutt, Los Alamos, Casmalia and the unincorporated areas of Lompoc and Santa Maria
- Funds streetlighting only
- In the unincorporated Santa Maria area (CSA 5), a benefit assessment rate up to \$14.73 can be considered





# NCLD – Fund Status

- The proposed benefit assessment is to remain at zero.
- Fund Balance is acceptable



# Recommendations



- Adopt resolutions establishing benefit assessment charges for CSA 3 and CSA 31
- Do not establish benefit assessments for NCLD