

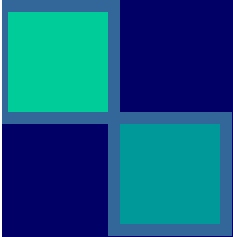



REGIONAL CONSERVATION STRATEGY

Presented by General Services



Vision Statement

- 
- Develop and implement a plan to ensure survival of the California Tiger Salamander (CTS). At the same time, improve process for landowner's projects.
- 




Presentation Goals

- Overview
 - Solution
 - Options
 - Costs
 - Recommendations for BOS Action
- 



Background

- CTS Listed as Endangered, January 2000
 - FWS presented need for HCP, Dec. 2002
 - Began building construction early 2004
 - EIR anticipated CTS unlikely
- 



- Found dead
CTSalamander
Sep 13, 2005



- Animal Shelter Completed June 2005
- Ground work done before CTS take; no impact



- Public Works Admin Completed July 2005
- Approximately \$50,000 added cost due to take

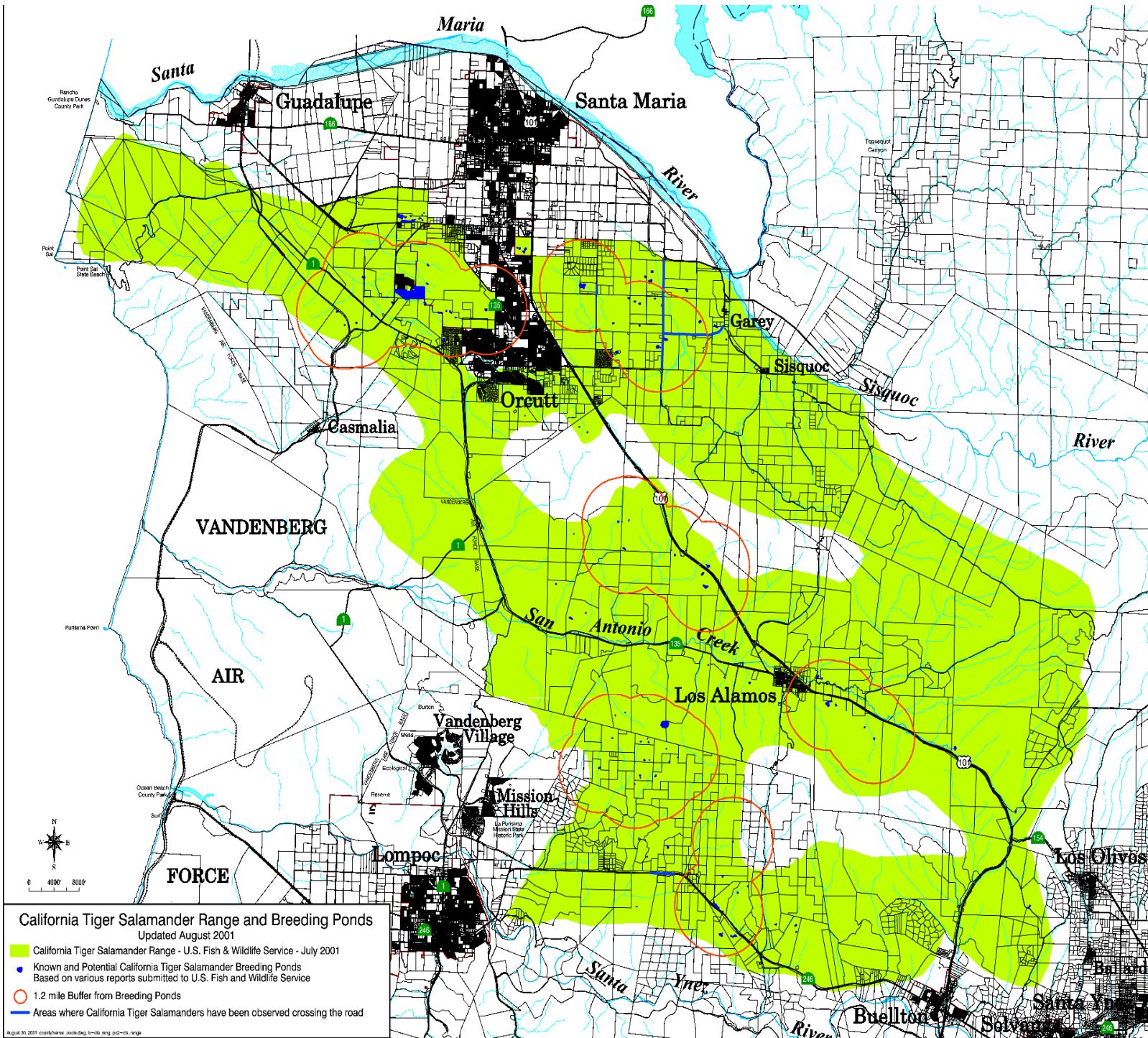


History

- Nov. 2004 Staff directed to perform HCP for site
- Apr. 2005 Staff recommended, and was directed, to explore options for a regional HCP
- Staff has researched experience of other counties
- March 28, 2006 Presented Staff Report recommending Regional Conservation Strategy as alternative to HCP



Current Situation



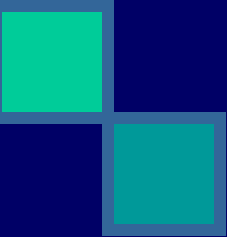

190,000 ac
Also Other Species



8/24/2006

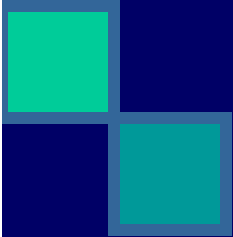



Current Situation

- 
- Each landowner must negotiate with Jurisdictions and Wildlife Agencies
 - For Landowner:
 - cumbersome
 - unpredictable
 - expensive
 - lengthy
- 



Current Situation

- 
- For Jurisdictions and Agencies:
 - drain on staff resources
 - inefficient use of tax dollars
 - For Species:
 - Less protective
- 

EXISTING CONDITION

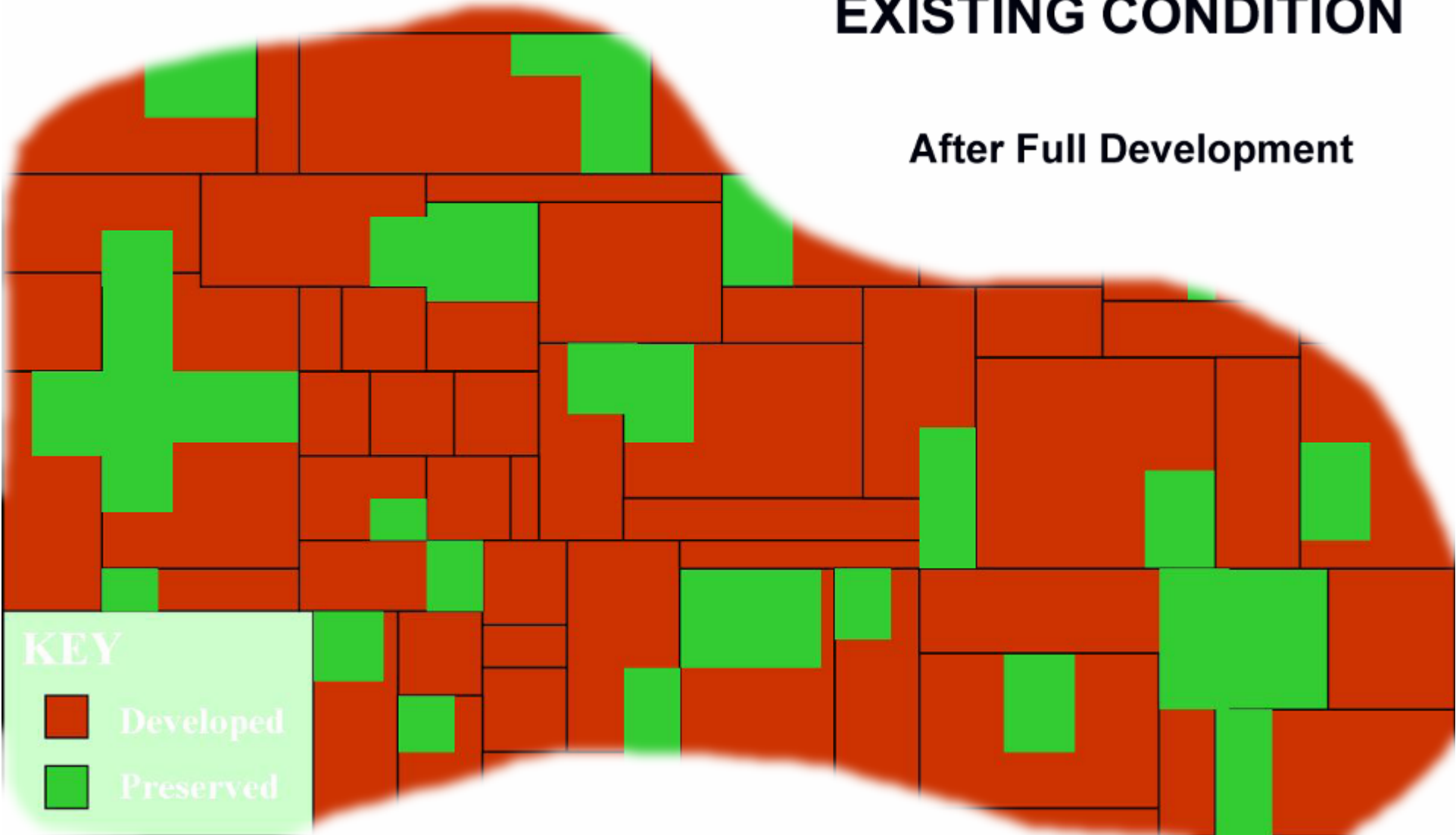
Early in Development

KEY

- Developed
- Preserved

EXISTING CONDITION

After Full Development

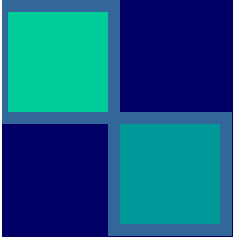



KEY

- Developed
- Preserved




Project Objectives

- 
- Provide long-term survival and contribute to the recovery of the California Tiger Salamander
 - Do so in a way that:
 - Is economically feasible
 - Protects landowner interests
 - Provides predictability and streamlined processing of land-use permits
- 




Options

- Regional Habitat Conservation Plan (HCP)
 - Regional Conservation Strategy (RCS)
 - Do Nothing
- 



Recommend RCS

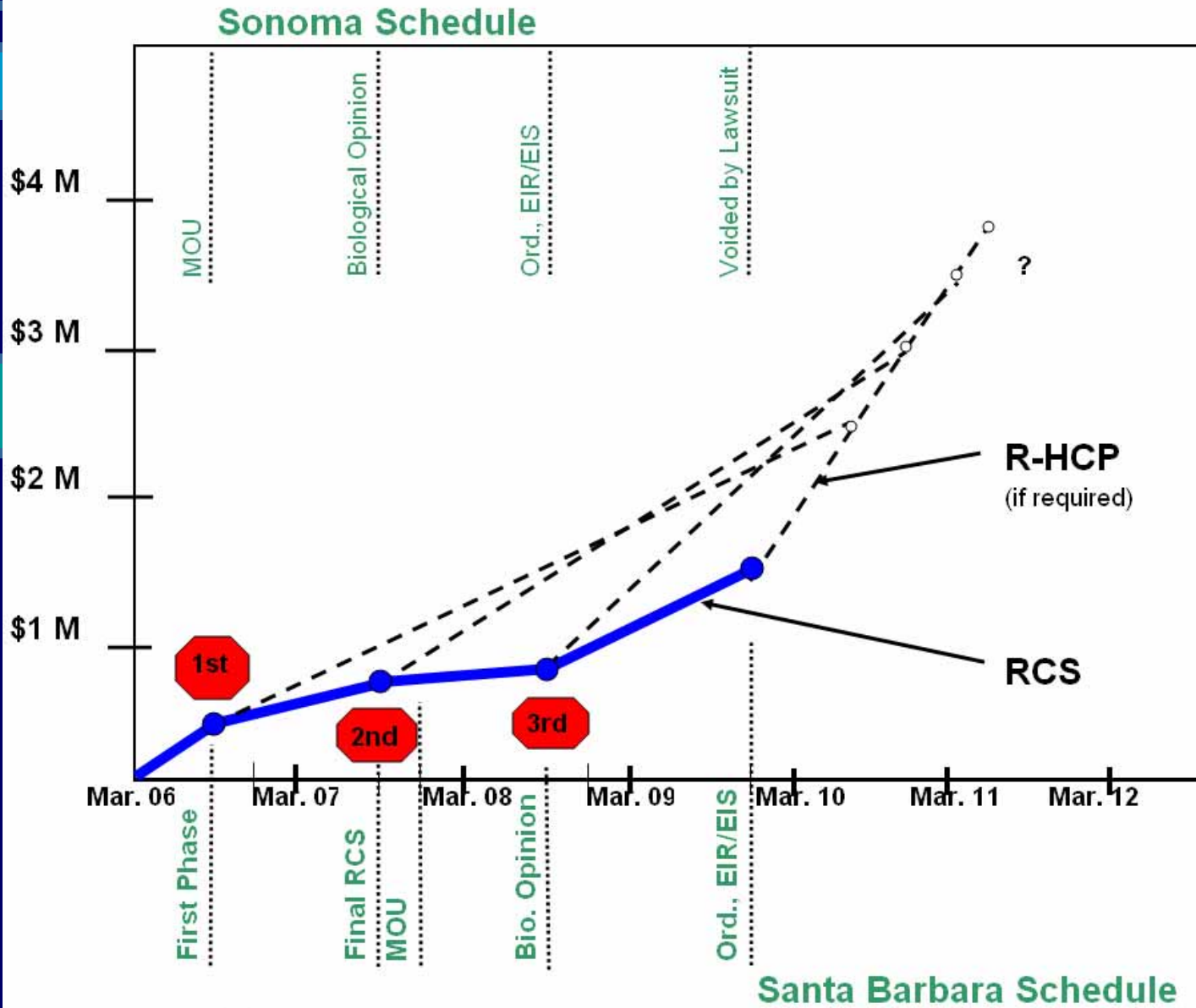
- Better for species than Do Nothing
 - Same protection to species as HCP
 - Cheaper and faster than HCP
 - Cheaper than Do Nothing
- 



Cost to Develop

| Task | Completion Date | Task Cost |
|--|----------------------------|--------------------|
| 1. Strategy and Implementation Plans | | |
| a. Initial Hearing | March 14, 2006 | \$30,000 |
| c. Define and Outline RCS | June 30 2006 | \$100,000 |
| d. Mitigation Requirements | November 2006 | \$270,000 |
| Sub-Total: | 0.5 Years Elapsed | \$400,000 |
| <i>1st Re-evaluation before proceeding</i> | | |
| e. Expanded Outline RCS | January 2007 | \$55,000 |
| f. Draft RCS | May 2007 | \$80,000 |
| g. Public Hearing on Draft Doc | July 2007 | \$30,000 |
| h. Final RCS | August 2007 | \$80,000 |
| Sub-Total: | 1 More Year Elapsed | \$245,000 |
| <i>2nd Re-evaluation before proceeding</i> | | |
| 2. MOU Development | December 2007 | \$80,000 |
| 3. Programmatic Biological Opinion | June 2008 | \$40,000 |
| Sub-Total: | 1 More Year Elapsed | \$120,000 |
| <i>3rd Re-evaluation before proceeding</i> | | |
| 4. Ordinances, EIR/EIS, Execute | October 2009 | \$660,000 |
| <i>Evaluate if more is needed</i> | | |
| TOTAL AFTER 3 ½ YEARS: | | \$1,425,000 |

RCS DEVELOPMENT TIMELINE



| Fiscal Year | Budget by Fiscal Year | | |
|--------------------|------------------------------|------------------------------|------------------|
| | Labor | Specialty Consultants | Total |
| 05/06 | 70,000 | 60,000 | 130,000 |
| 06/07 | 300,000 | 120,000 | 420,000 |
| 07/08 | 125,000 | 90,000 | 215,000 |
| 08/09 | 310,000 | 40,000 | 350,000 |
| 09/10 | 270,000 | 40,000 | 310,000 |
| Totals: | 1,130,000 | 345,000 | 1,425,000 |

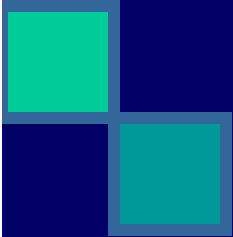



RCS Team

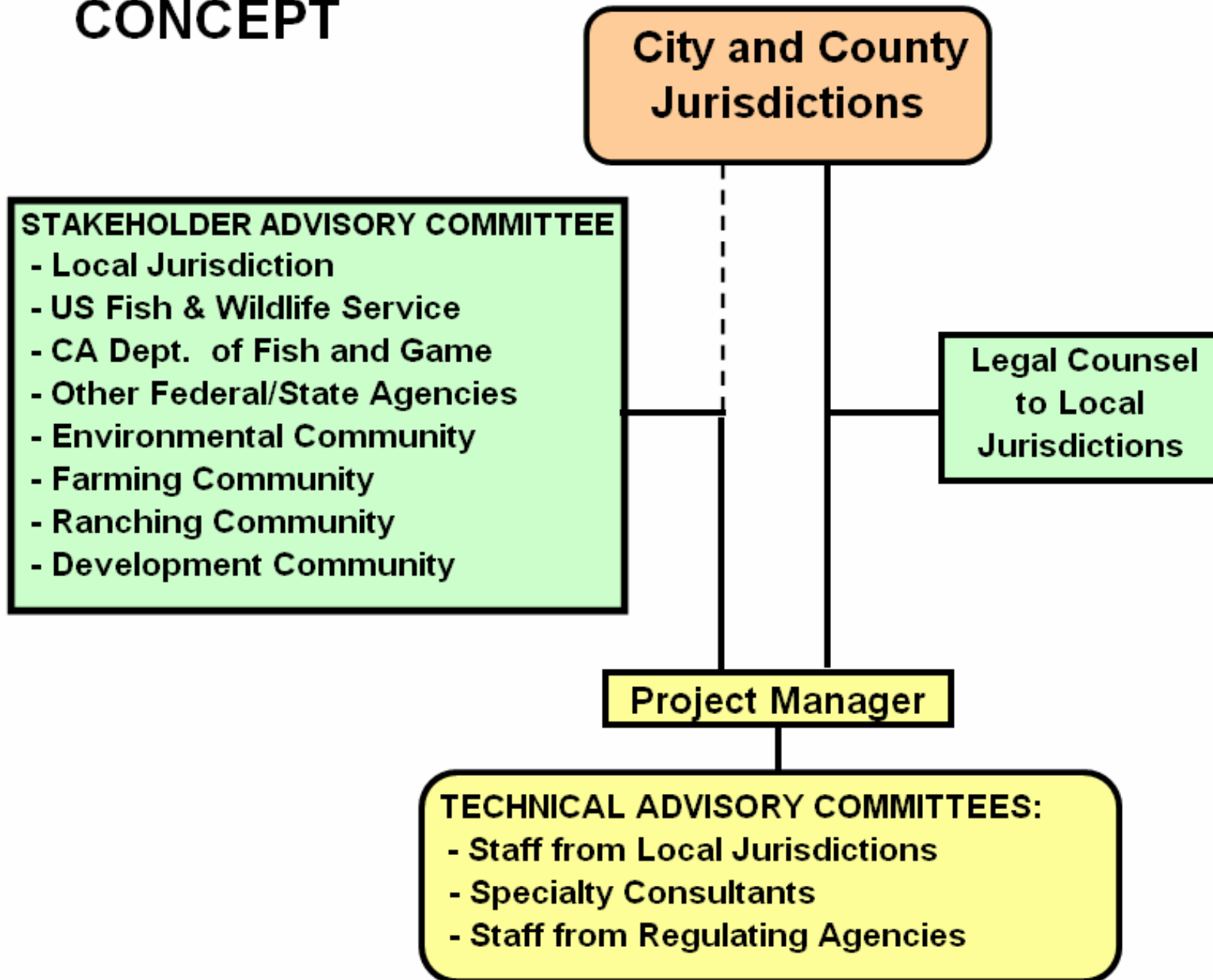
- Stakeholders
 - US Fish & Wildlife
 - CA Fish and Game
 - Environmental Community
 - Local Jurisdictions
 - Farming Community
 - Developing Community
 - Ranching Community
- 



RCS Team: Principles

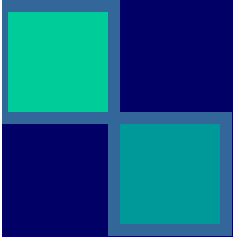
- 
- Interest Groups choose among options
 - Staff of Experts use these to develop details and make recommendations
 - Agencies ensure consistency to law
 - Local Jurisdictions implement per General Plan
- 

GENERIC CONCEPT





Recommendations to Board:

- 
- a) Adopt the method of a Conservation Strategy similar to Sonoma County's approach, in the pursuit of a regional habitat conservation plan limited to the range of the CTS, but with the requirement that the approach be re-evaluated before development of a MOU with wildlife agencies, or other implementation effort;
 - b) Authorize staff, in partnership with the US Fish & Wildlife and the City of Santa Maria, to develop a Conservation Strategy Team structure for consideration by the Board at a later hearing, and;
 - c) Authorize a budget revision this fiscal year in the amount of \$130,000 for additional staff and consulting costs, to be released from the Vehicle License Fee Gap Loan.
- 