

Corner of RUCKER + PURISIMA ROS, LOMPAC

Sam Taunson

#3

MAP NOT TO SCALE

ZONING

District 3

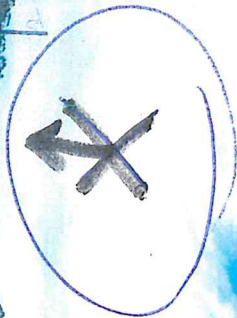
RESIDENTIAL
R-3 ←

AG →

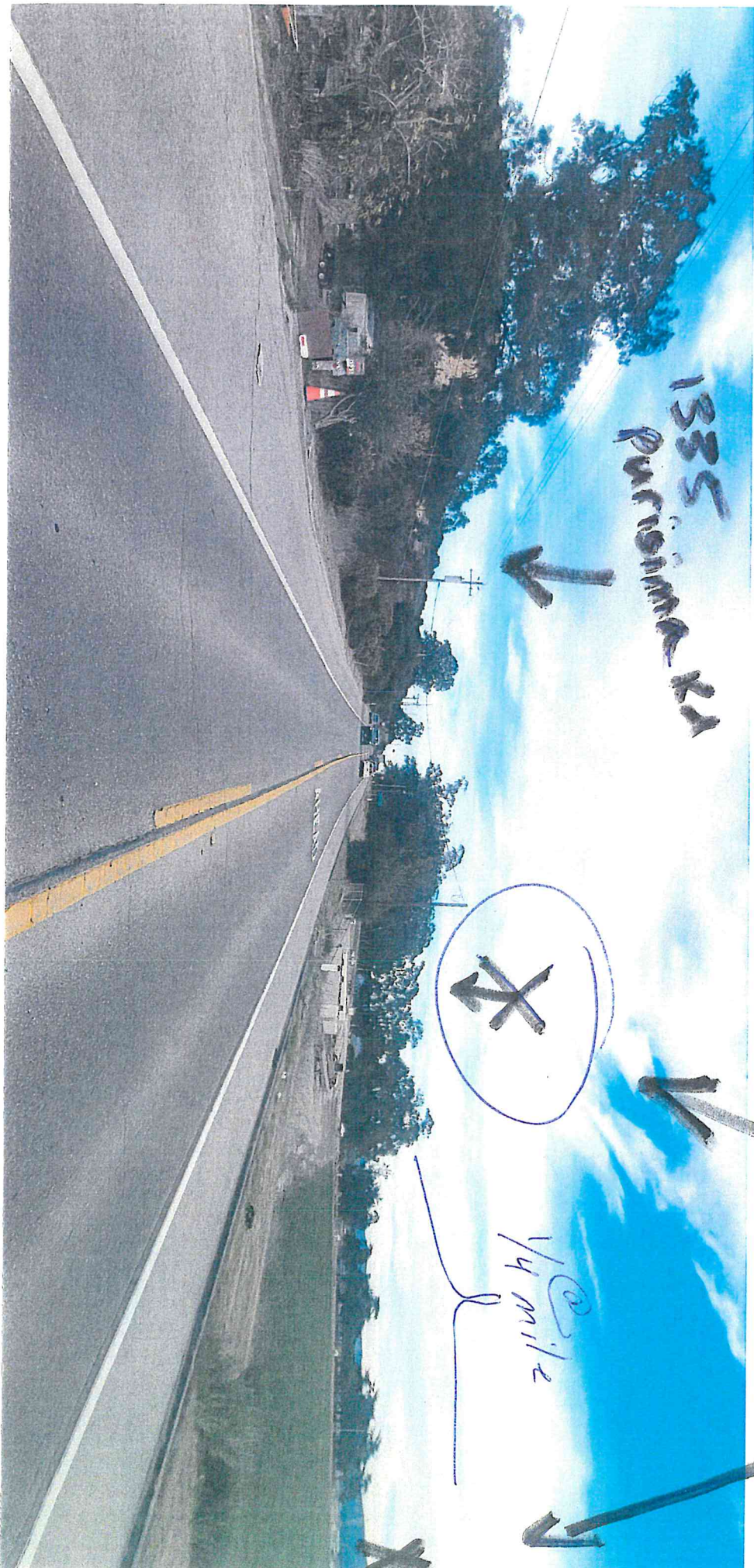
CURRENTLY
PLANNED
SG

SG
NEEDS
NTPG

1335
PURISIMA RD



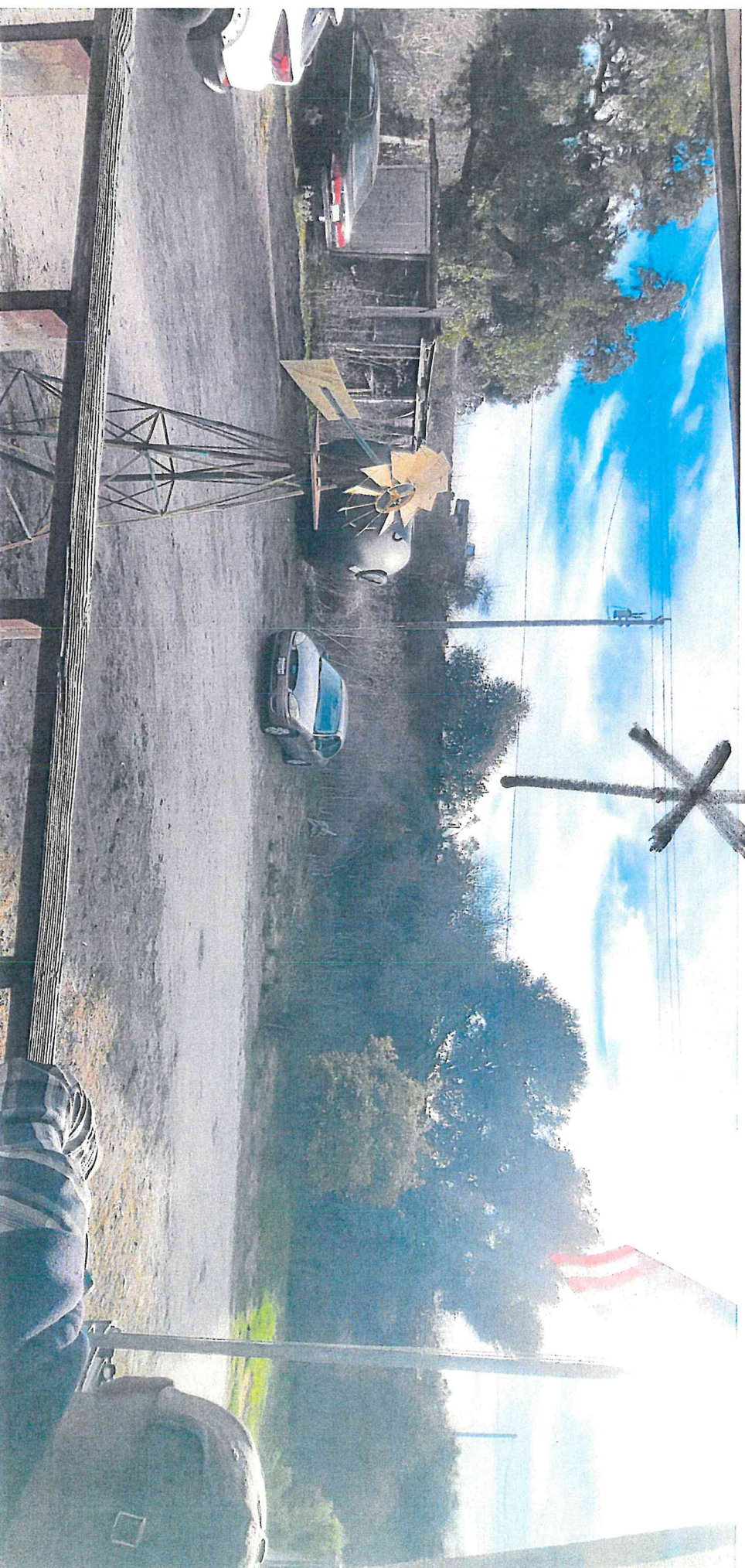
1/4 @ 1/2
mile



LIX GDC

FRONT PORCH VIEW
at 1335 Punzima Rd
SWIFT: circa 1920's

No! Retailitory of
Place ment of
56 X 200 1078



KSP Campbell showed up
BECAUSE I TAKING
PICTURES
LOOK AT THE
WINTER CROPS!!!

Winter crops changing the seasons!
do not require



Check reports from LPO on 2-3-2005 + 2-8-2005

The woman (car and
in the BLUE HOSTILE and
is a HOSTILE
ABUSIVE
PROPERTY OPERATIVE
OPERATIVE
REPORTER!

