

Attachment

B

**County of Santa Barbara
Redistricting 2011
Proposal Assessment Summary**

Name of Proposal: 2011 Revised Plan for Adoption - 7/12/2011

Organization or Individual: Board of Supervisors

Mandatory Criteria

M-1: Equal District Population

District	Plan Results	Target	% Deviation
1	84,225	84,779	-0.65%
2	84,707	84,779	-0.08%
3	84,283	84,779	-0.59%
4	85,436	84,779	0.77%
5	85,214	84,779	0.51%
Average % Deviation:			0.52%

M-2: VRA Compliance I - Total Population

District	% Hispanic	2010 Existing	% Change
1	39.81%	42.69%	-2.88%
2	26.90%	25.14%	1.76%
3	28.90%	26.13%	2.77%
4	45.93%	43.76%	2.17%
5	72.48%	70.03%	2.45%
Average	42.80%	41.55%	2.41%

M-3: VRA Compliance II - Voting Age Population

District	% Hispanic	2010 Existing	% Change
1	34.66%	37.14%	-2.48%
2	23.76%	22.23%	1.53%
3	25.70%	23.75%	1.95%
4	39.55%	37.53%	2.02%
5	66.45%	63.90%	2.55%
Average	38.02%	36.91%	2.11%

Permissive Criteria/Other Information

P-1: Contiguity of all District Boundaries

Yes/No: Yes

P-2 Maximum % Population Deviation between Districts

Percentage (highest/lowest): 1.42%

P-3: % of 8 Cities represented by more than one District

Percentage 50.0%

O-1: Population Moving In/Out

District	Population Added	Population Subtracted	% Change
1	8,349		11.00%
2	11,358	8,349	24.12%
3	13,693	11,358	30.57%
4	16,317	13,693	36.24%
5		16,317	16.07%

O-2: Voting age population w/16 years to District elections

From District	Moving to D2	Moving to D5	
1			
3	8,821		
4			

O-3: Population in Unincorporated Territory

District	Proposed Plan Unincorporated Population	2010 Existing Unincorporated Population	% Change
1	16,133	16,131	0.01%
2	30,343	30,259	0.28%
3	47,647	47,733	-0.18%
4	36,812	36,812	0.00%
5	2,482	2,482	0.00%

District Summary

2011 Revised Plan For Adoption - 07/12/2011

7/14/2011

District Count: 5

Maximum Deviation: 1,181 1.39%
 Average Deviation: 437 0.52%
 Minimum Count: 84,255
 Maximum Count: 85,436
 Total Count: 423,895

Deviation From Optimum

Deviation -524
 As % of Optimum -0.62%

District	Proposed	Optimum	Count	% of Total	Demographic	Count	% of Total	Demographic	Count	% of 18+	Demographic	Count	% of 18+
1	84,255	84,779		100.00%	TOTAL:	67,738	100.00%	TOTAL18:	40,188	59.33%			
			84,255	75.73%	NHWHT:	52,823	77.98%	WHT18:	40,188	59.33%	NHWHT18:	40,188	59.33%
			1,120	1.33%	NHBLK:	953	1.41%	BLK18:	815	1.20%	NHBLK18:	815	1.20%
			859	1.02%	NHAIAN:	658	0.97%	AIAN18:	238	0.35%	NHAIAN18:	238	0.35%
			2,181	2.59%	NHASIAN:	1,932	2.85%	ASIAN18:	1,847	2.73%	NHASIAN18:	1,847	2.73%
			106	0.13%	NHNHOPI:	90	0.13%	NHOPI18:	77	0.11%	NHNHOPI18:	77	0.11%
			13,077	15.52%	NHOTHER:	9,160	13.52%	OTHER18:	122	0.18%	NHOTHER18:	122	0.18%
			3,108	3.69%	NHP2MRCE:	2,122	3.13%	P2MRCE18:	976	1.44%	NHP2MRCE18:	976	1.44%
			33,542	39.81%	HISP18:	23,475	34.66%	HISP18:					
			50,713	60.19%	NHISP18:	44,263	65.34%	NHISP18:					

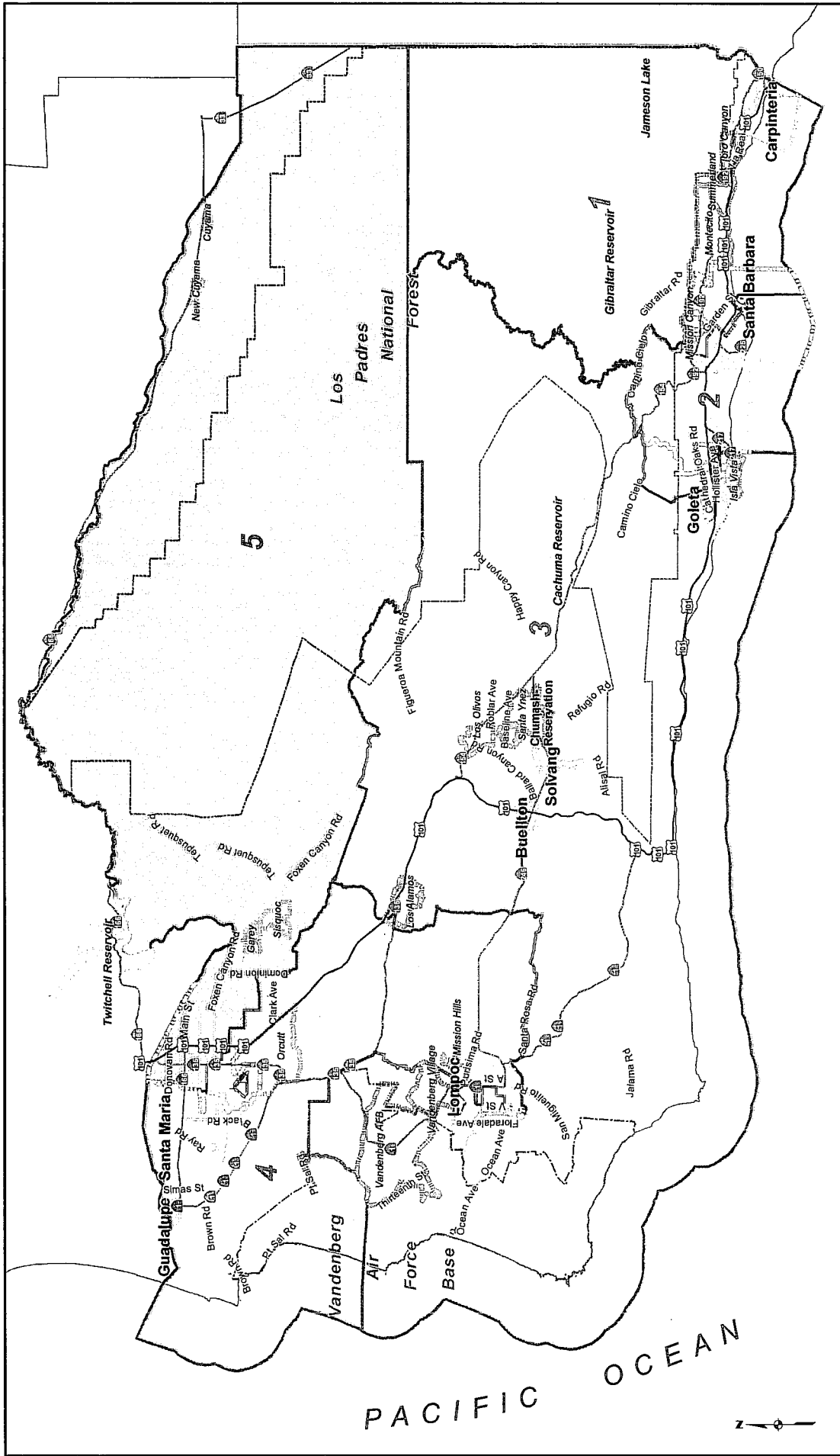
District	Proposed	Optimum	Deviation	As % of Optimum
2	84,707	84,779	-72	-0.08%

District	Proposed	Optimum	Count	% of Total	Demographic	Count	% of Total	Demographic	Count	% of 18+	Demographic	Count	% of 18+
2	84,707	84,779		100.00%	TOTAL:	68,807	100.00%	TOTAL18:	46,101	67.00%			
			84,707	77.78%	NHWHT:	54,840	79.70%	WHT18:	46,101	67.00%	NHWHT18:	46,101	67.00%
			65,886	1.35%	NHBLK:	943	1.37%	BLK18:	855	1.24%	NHBLK18:	855	1.24%
			1,142	0.82%	NHAIAN:	548	0.80%	AIAN18:	242	0.35%	NHAIAN18:	242	0.35%
			696	5.55%	NHASIAN:	3,985	5.79%	ASIAN18:	3,922	5.70%	NHASIAN18:	3,922	5.70%
			4,702	0.14%	NHNHOPI:	99	0.14%	NHOPI18:	83	0.12%	NHNHOPI18:	83	0.12%
			115	10.55%	NHOTHER:	6,407	9.31%	OTHER18:	129	0.19%	NHOTHER18:	129	0.19%
			8,936	3.81%	NHP2MRCE:	1,985	2.88%	P2MRCE18:	1,128	1.64%	NHP2MRCE18:	1,128	1.64%
			3,230	26.90%	HISP18:	16,347	23.76%	HISP18:					
			22,784	73.10%	NHISP18:	52,460	76.24%	NHISP18:					

District	Proposed	Optimum	Deviation	As % of Optimum	Count	% of Total Demographic	Count	% of Total Demographic	Count	% of 18+	Demographic	Count	% of 18+		
3	84,283	84,779	-496	-0.59%					69,347	100.00%	TOTAL18:	40,850	58.91%		
					84,283	100.00%			49,588	71.51%	NHWHT18:	2,360	3.40%		
					59,352	70.42%	NHWHT:	47,350	56.18%	WHT18:	2,532	3.65%	NHBLK18:	420	0.61%
					2,970	3.52%	NHBLK:	2,705	3.21%	BLK18:	823	1.19%	NHAIAN18:	5,632	8.12%
					1,057	1.25%	NHAIAN:	504	0.60%	AIAN18:	5,769	8.32%	NHASIN18:	205	0.30%
					6,418	7.61%	NHASIAN:	6,246	7.41%	ASIAN18:	232	0.33%	NHNHOP18:	162	0.23%
					267	0.32%	NHNHOPI:	235	0.28%	NHOPI18:	7,372	10.63%	NHOTHRC18:	1,899	2.74%
					9,756	11.58%	NHOTHER:	204	0.24%	OTHER18:	3,031	4.37%	NHP2RC18:		
					4,463	5.30%	NHP2MRCE:	2,680	3.18%	P2MRCE18:	17,819	25.70%			
					24,359	28.90%				HISP18:	51,528	74.30%			
					59,924	71.10%				NHISP18:					

District	Proposed	Optimum	Deviation	As % of Optimum	Count	% of Total Demographic	Count	% of Total Demographic	Count	% of 18+	Demographic	Count	% of 18+		
4	85,436	84,779	657	0.77%					61,558	100.00%	TOTAL18:	31,814	51.68%		
					85,436	100.00%			44,305	71.97%	NHWHT18:	1,282	2.08%		
					58,609	68.60%	NHWHT:	38,736	45.34%	WHT18:	1,421	2.31%	NHBLK18:	365	0.59%
					1,969	2.30%	NHBLK:	1,713	2.01%	BLK18:	846	1.37%	NHAIAN18:	2,473	4.02%
					1,201	1.41%	NHAIAN:	464	0.54%	AIAN18:	2,690	4.37%	NHASIN18:	108	0.18%
					3,454	4.04%	NHASIAN:	3,079	3.60%	ASIAN18:	126	0.20%	NHNHOP18:	68	0.11%
					179	0.21%	NHNHOPI:	148	0.17%	NHOPI18:	9,920	16.11%	NHOTHRC18:	1,103	1.79%
					15,737	18.42%	NHOTHER:	106	0.12%	OTHER18:	2,250	3.66%			
					4,287	5.02%	NHP2MRCE:	1,948	2.28%	P2MRCE18:	24,345	39.55%			
					39,242	45.93%				HISP18:	37,213	60.45%			
					46,194	54.07%				NHISP18:					

District	Proposed	Optimum	Deviation	As % of Optimum	Count	% of Total Demographic	Count	% of Total Demographic	Count	% of 18+	Demographic	Count	% of 18+		
5	85,214	84,779	435	0.51%					58,398	100.00%	TOTAL18:	14,886	25.49%		
					85,214	100.00%			33,848	57.96%	NHWHT18:	743	1.27%		
					47,473	55.71%	NHWHT:	17,339	20.35%	WHT18:	960	1.64%	NHBLK18:	239	0.41%
					1,312	1.54%	NHBLK:	922	1.08%	BLK18:	1,097	1.88%	NHAIAN18:	2,873	4.92%
					1,672	1.96%	NHAIAN:	312	0.37%	AIAN18:	3,062	5.24%	NHASIN18:	88	0.15%
					3,910	4.59%	NHASIAN:	3,584	4.21%	ASIAN18:	98	0.17%	NHNHOP18:	83	0.14%
					139	0.16%	NHNHOPI:	117	0.14%	NHOPI18:	16,652	28.51%	NHOTHRC18:	683	1.17%
					26,354	30.93%	NHOTHER:	132	0.15%	OTHER18:	2,681	4.59%			
					4,354	5.11%	NHP2MRCE:	1,048	1.23%	P2MRCE18:	38,803	66.45%			
					61,760	72.48%				HISP18:	19,595	33.55%			
					23,454	27.52%				NHISP18:					

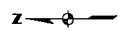
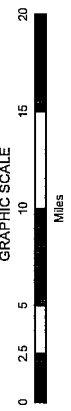


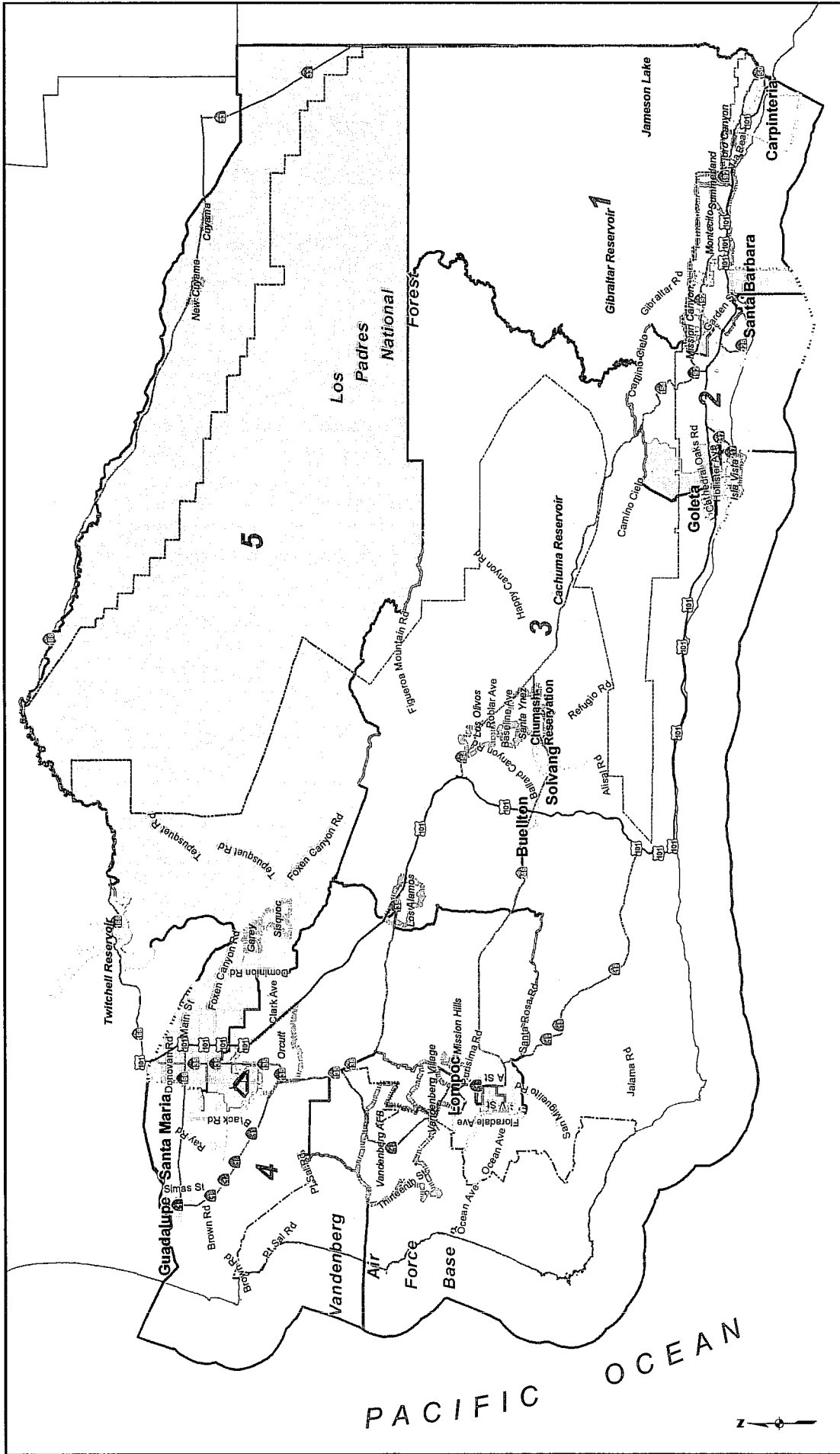
Supervisory Districts, Santa Barbara County
 2011 Revised Plan for Adoption 07/12/2011 Overview

2011 Revised Districts

 2010 Census Cities

 2010 Census Designated Places

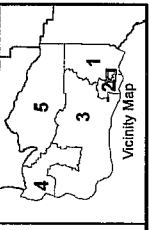
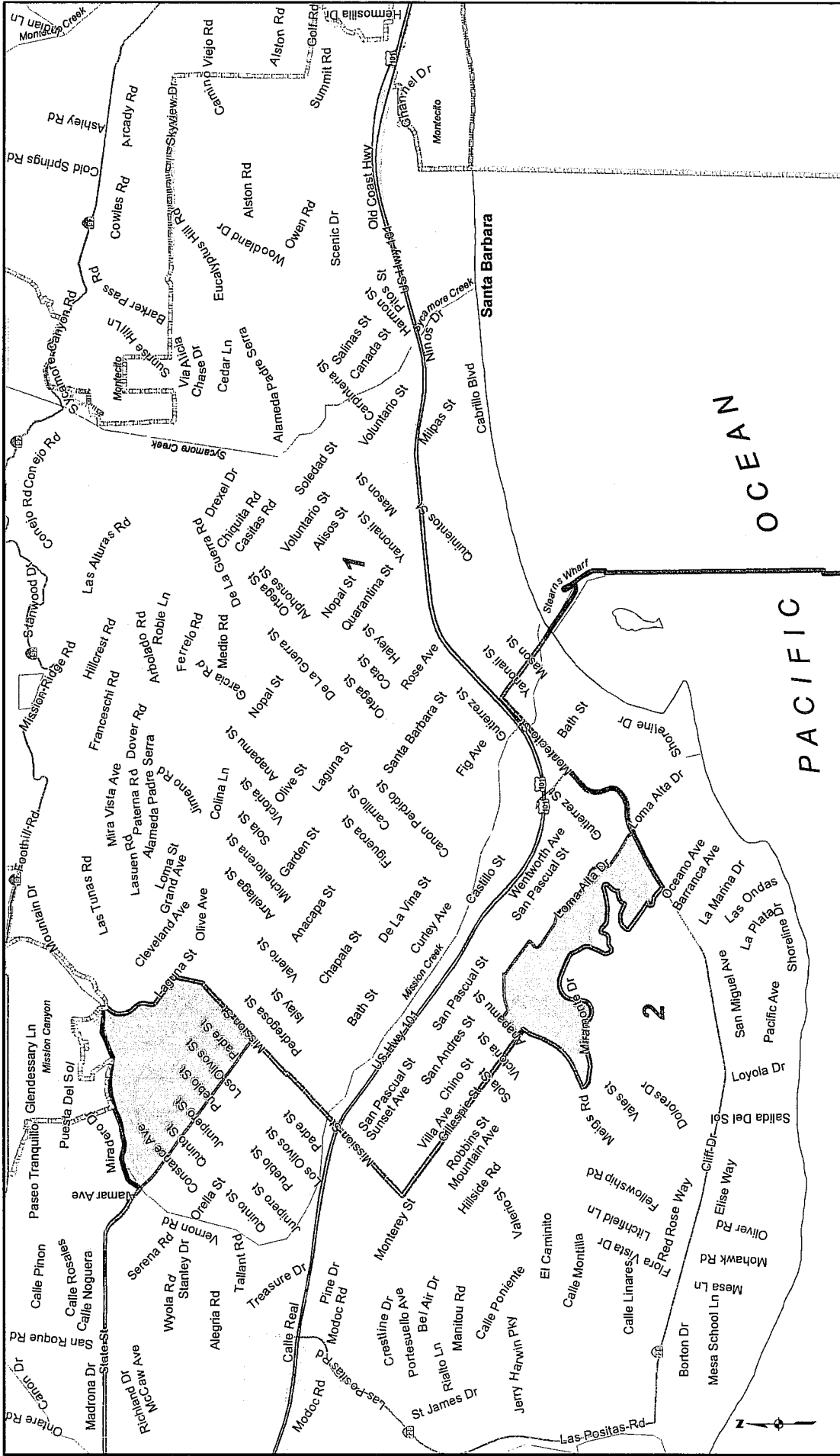




Supervisorial Districts, Santa Barbara County
 2011 Revised Plan for Adoption 07/12/2011 Areas of Change

2011 Revised Districts
 2010 Census Cities
 2010 Census Designated Places
 Districts Areas of Change

GRAPHIC SCALE
 0 2.5 5 10 15 20 Miles



Supervisory Districts, Santa Barbara County
2011 Revised Plan for Adoption 07/12/2011
Detail of Santa Barbara and Mesa Change Areas

- 2011 Revised Districts
- 2010 Census Cities
- 2010 Census Designated Places
- Change Areas Compared to MVP1
- Districts MVP1



0 0.125 0.25 0.5 0.75 1
 Miles