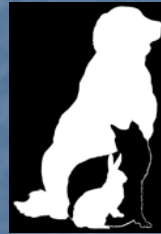


*Santa Barbara County  
Animal Services*



**Report on Local Spay & Neuter  
Ordinance and Outreach Plan**

**Santa Barbara County**

**PUBLIC**



**Health**

**DEPARTMENT**

# *REPORT ON CURRENT CONDITIONS*



# *SB County Shelters and Rescue Groups*

- **County Animal Services Public Shelters:**
  - Santa Barbara Shelter
  - Lompoc Shelter
  - Santa Maria Animal Center
- **Private Humane Societies**
  - Santa Barbara Humane Society
  - Santa Maria Valley Humane Society
  - Santa Ynez Valley Humane Society



# *SB County Shelters and Rescue Groups, cont'd*

- **Organizations within County Shelters**
  - ASAP
  - K-9 PALs
  - BUNS
  - CAPA
  - SBC Animal Care Foundation
- **Other Private Rescue Organizations**
  - D.A.W.G.
  - V.IV.A.
  - ResQCats
  - Catalyst for Cats
  - SB Animal Rescue
  - Second Chance Cocker Rescue
  - Central Coast S.P.C.A.
  - Various breed rescues

# *Overcrowding at County Shelters*





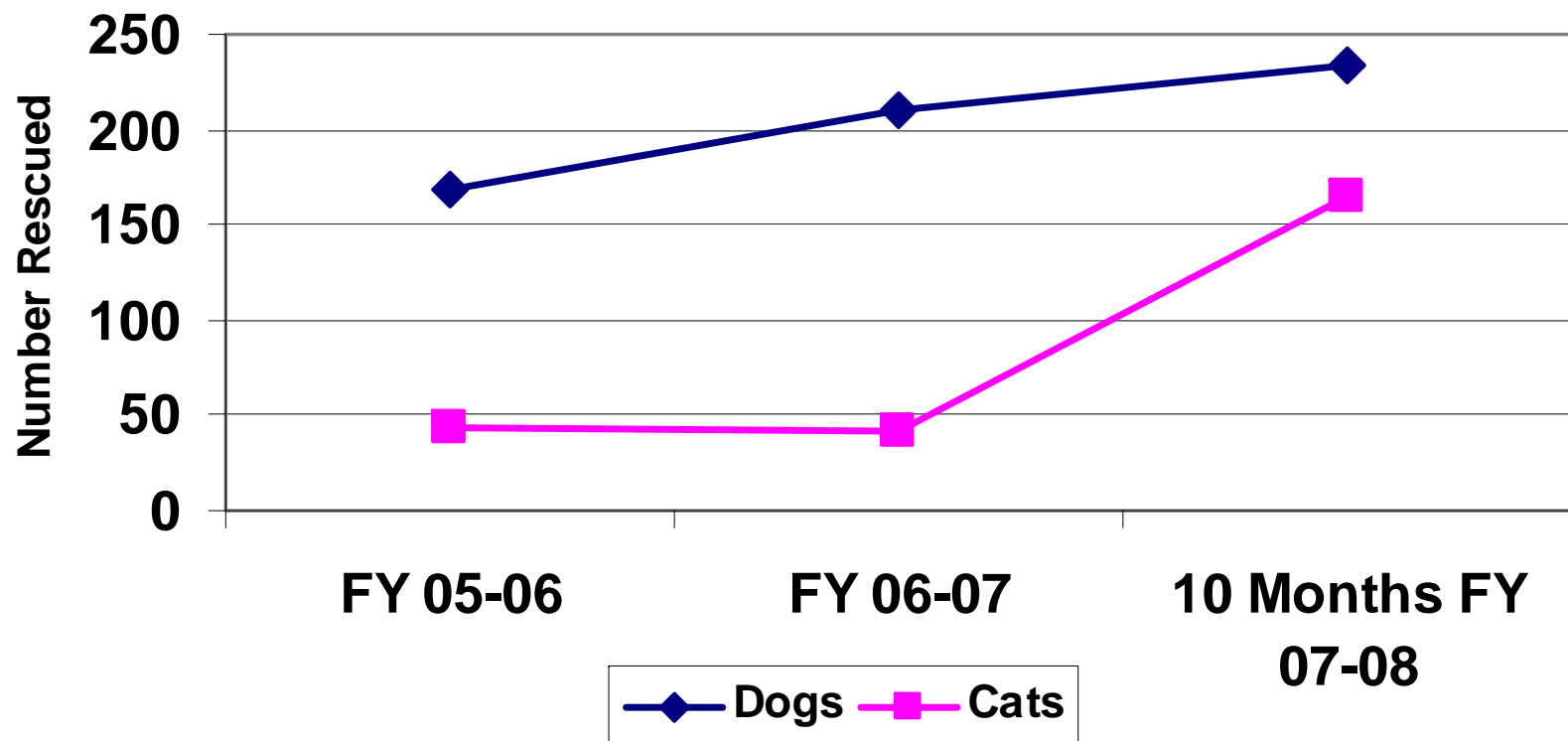
## *Dogs at Santa Maria Animal Center*

- 78 dog kennels
- Census often reaches 130 or more dogs
- Transfers to cooperating organizations
- Euthanasia of excess animals if resources not available



# *Adoptions to Other Agencies or Rescues*

## **Dogs and Cats Adopted to Rescue Groups**



# *Kitten Season Figures*

## **Annual kitten intake:**

- 300-500 at each county shelter
- 100+ at each private shelter
- 2007 intake: 100+ kittens euthanized in SM for lack of foster placements



## **April 2008 (first month of season):**

- 52 kittens already in foster in SM
- 22 kittens in foster in SB
- ResQCats already at 47 (capacity: 50)



## *Cats at Santa Barbara Shelter*

- **Number of cats at shelter in mid-April (usual annual low point):**
  - 16 year average - 41 cats
  - 2005, 2006, 2007: 50+ cats
  - Mid-April 2008: 61 cats

These numbers do not include cats and kittens in foster homes

# *Consequences of Overcrowding*

- Stressful for animals
- Greater demand on resources
- Spread of disease
- Unpleasant environment for visitors and adopters
- Euthanasia
- Overworked/stressed staff (increased turnover)

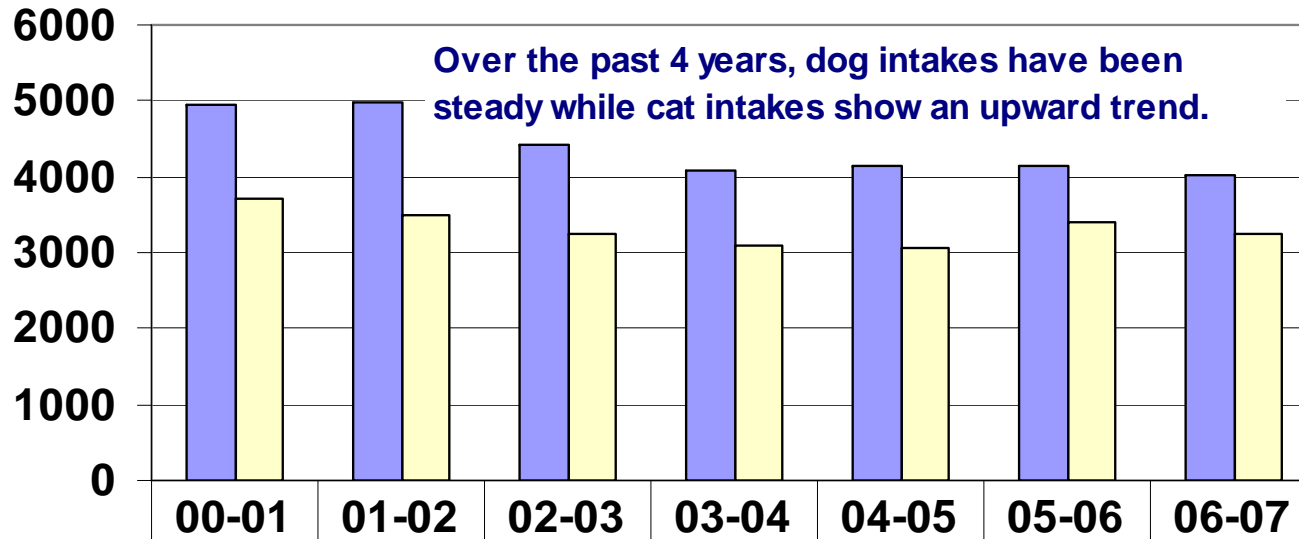
## *Historical Overview: Declining Shelter Numbers*

- 1970s-1990s: dramatic declines due to education and outreach
- 1980s: low fee spay and neuter clinics
- 1994: SB County local ordinance to spay and neuter shelter adopted animals
- 1998: Vincent Bill passes, requiring spay/neuter of shelter adopted animals



# Recent Trends in Santa Barbara County

## Dog & Cat Intake SB County Animal Shelters 2000-01 through 2006-07



■ Dog Intake	4941	4994	4427	4078	4158	4144	4024
■ Cat Intake	3697	3485	3255	3092	3075	3387	3251

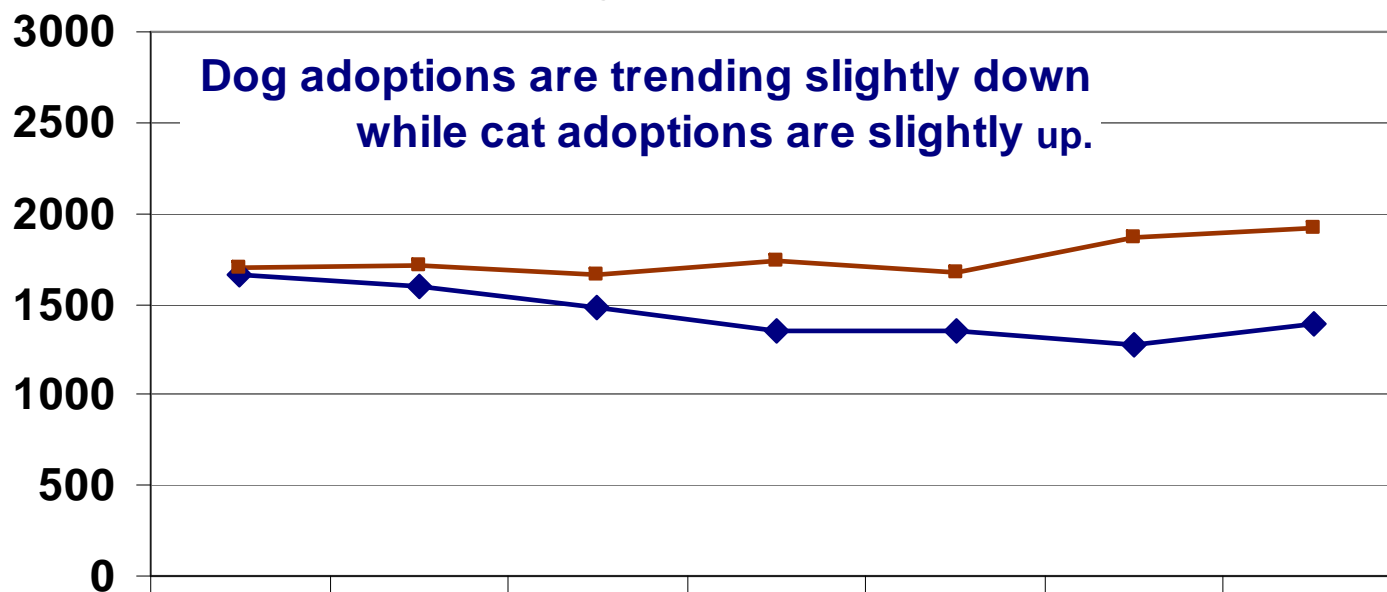
■ Dog Intake    ■ Cat Intake

# Adoption Trends

## Dog & Cat Adoptions

SB County Animal Shelters

2000-01 through 2006-07



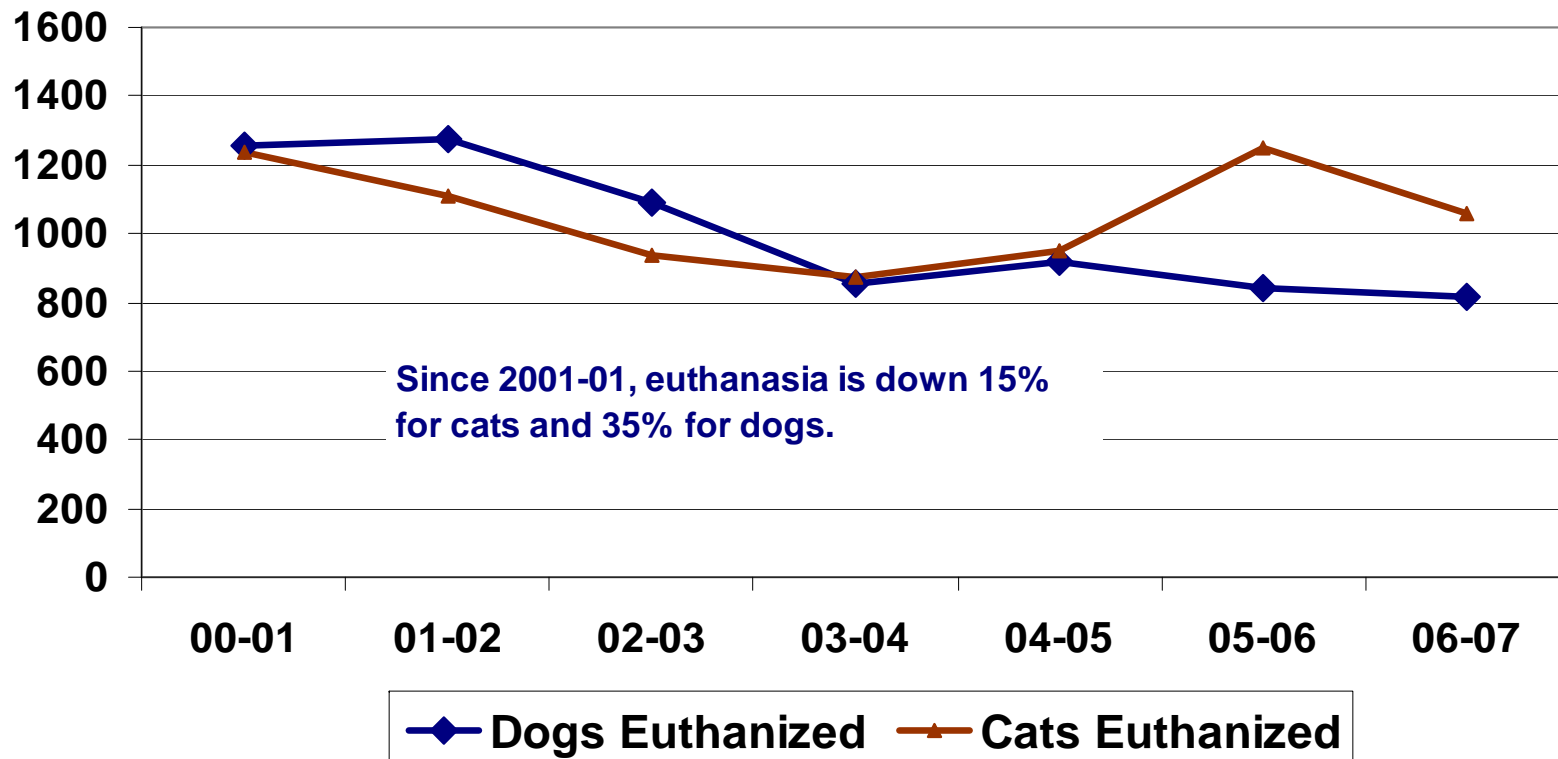
◆ Dogs Adopted	1662	1592	1477	1351	1352	1271	1389
■ Cats Adopted	1703	1710	1665	1737	1674	1870	1917

# Euthanasia Trends

## Dogs & Cats Euthanized

SB County Animal Shelters

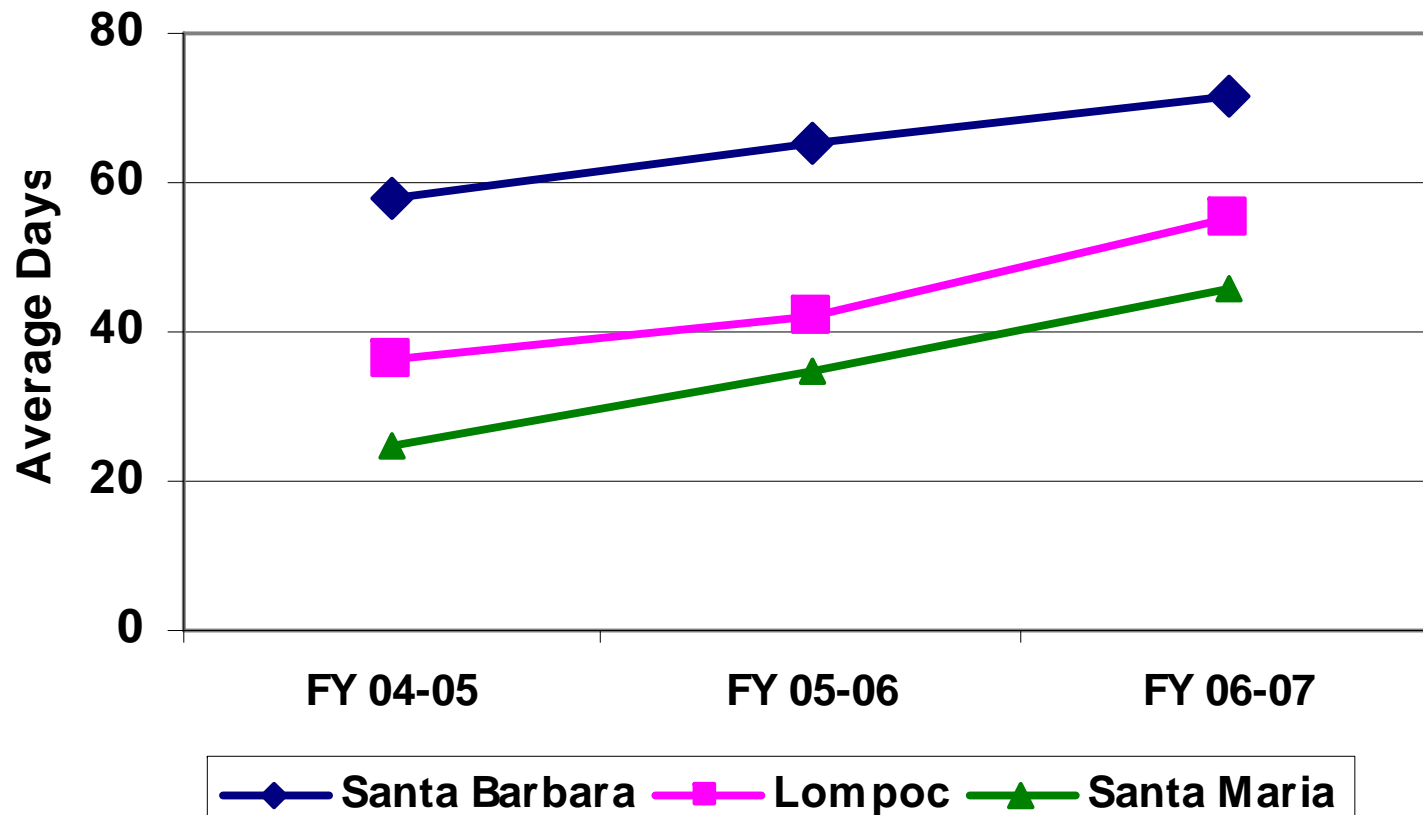
2000-01 through 2006-07





# *Average Length of Stay*

**Avg Board Days (Dogs & Cats)  
SB County Animal Services**



# ***“No-Kill” Equation in SB County***

- **Feral Cat Trap-Neuter-Release (TNR):**  
Catalyst for Cats, VIVA, Spay Days
- **High Volume/Low Cost Spay/Neuter Clinics:**  
SBHS, SYVHS, SMVHS, DAWG
- **Coordination with Rescue Groups :** SBCACF, CAPA, ASAP, K-9 PALS, DAWG, VIVA, Kitten Coalition, humane societies, breed rescues
- **Foster Care Programs:** kittens, puppies, sick animals, post-surgical patients, behavioral and medical rehabilitation
- **Comprehensive Adoption Programs:** ads, specials, off-sites, fairs, adoption events at shelters
- **Pet Retention Counseling**
- **Director Leadership:** commitment to ‘no-kill’

# *No-Kill Policy and Longer-Term Sheltering*

- Longer holding periods for adoptable animals
- Longer average lengths of stay:
  - April 25, 2008 Goleta dog census: 73  
*Dogs in shelter 3-12+ mos. = 43*  
*Dogs in shelter 1 year or more = 12*
  - April 25, 2008 Santa Maria dog census: 97  
*Dogs in shelter 3-12+ months: 22*



**The Next Step:**

***Introducing a  
Spay & Neuter  
Ordinance***

*that will address local issues*

# *Benefits of Spay and Neuter*

- Fewer unwanted animals are born
- Health benefits for altered animals
  - Fewer reproductive cancers and infections
  - Prevents continuation of genetic defects
  - Longer lifespan
- Reduced behaviors that cause owner abandonment

# *Why Spay & Neuter Works*

Reduced accidental or casual breeding =  
fewer unwanted dogs and cats



Reduced behavioral problems leading to  
pet abandonment



# *Communities with Spay/Neuter Ordinances*

- **San Mateo County** (passed 1990)
- **Santa Cruz County** (1995)
- **Los Angeles County + several cities** -- dogs only (2006)
- **Lompoc** -- dogs only (2006)
- **Lake County + cities** (2006)
- **Rhode Island** -- cats only (2006)
- **Sacramento County** (2007)
- **San Bernardino** -- dogs only (2007)
- **City of Los Angeles** (2008)

# *Stakeholders Workgroup*

- **Opponents of state bill, AB 1634**
  - Members of local breed club
  - Members of Dog PAC, Santa Barbara (dog owners rights advocacy group)
- **Volunteers from local animal rescue groups**
- **Animal Services staff**

# *Draft Ordinance*

- Age of spay/neuter: 6 months (not 4 months)
- Exemptions for
  - all registered purebreds
  - working animals of various types
  - veterinary medical health concerns
  - one litter for cats
  - temporarily in County



## *Draft Ordinance (cont.)*

- **NO new fees or permits for dog owners**
- **Extend minimum standards to all dog/cat sellers**
- **Fix-it tickets and time to comply**
- **Information, education and outreach to support compliance**
- **Public/private partnership for low-income subsidized spay/neuter services**



# *Enforcement*

- Gradual enforcement through education and outreach
- Enforcement complaint-driven or related to other violations
- No “pet patrol”



***BENEFITS OF A  
SPAY/NEUTER ORDINANCE  
FOR SB COUNTY***

# ***COST BENEFITS***

- Ordinance as proposed is revenue neutral
- No new staff added for enforcement
- Cost containment for food, litter, medications



## ***COST BENEFITS (cont'd)***

- Better staff retention
- Lowered number of worker's compensation claims
- Reduced need for large capital outlays for infrastructure



# *SOCIAL BENEFITS*



- Friendlier, more pleasant shelters attract more adopters & volunteers
- Reputation as humane community
- Lower animal euthanasia

# *Outreach Plan*

- Letters and presentations to local organizations
- Community forums in all regions of County
- Informational materials (English & Spanish)
- Information on Channel 20
- Information on the website
- Communication with Cities in SB County

Thank You

