



Oil & Gas Briefing

Santa Barbara County Board of Supervisors

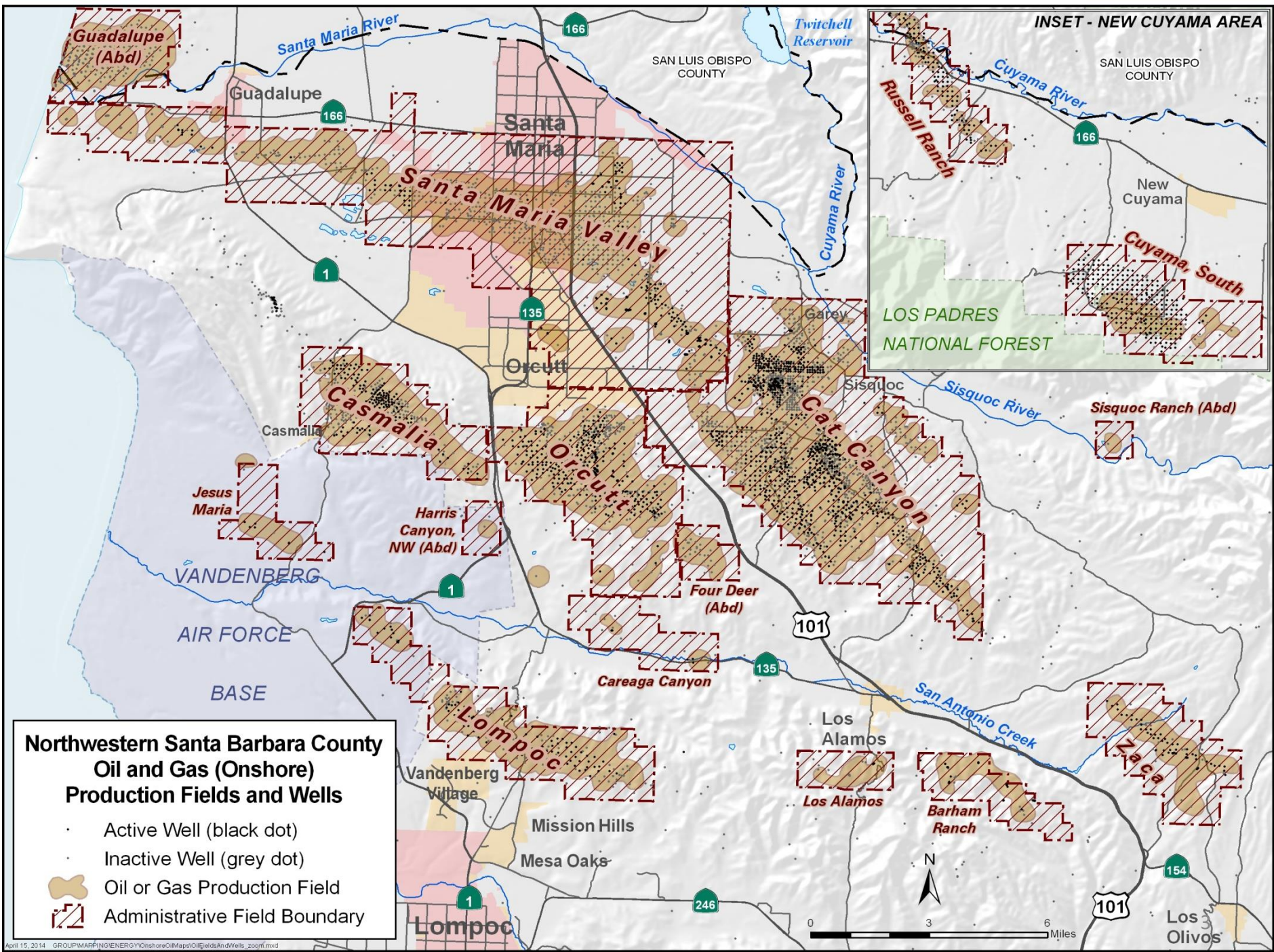
Planning & Development
Energy, Minerals & Compliance Division

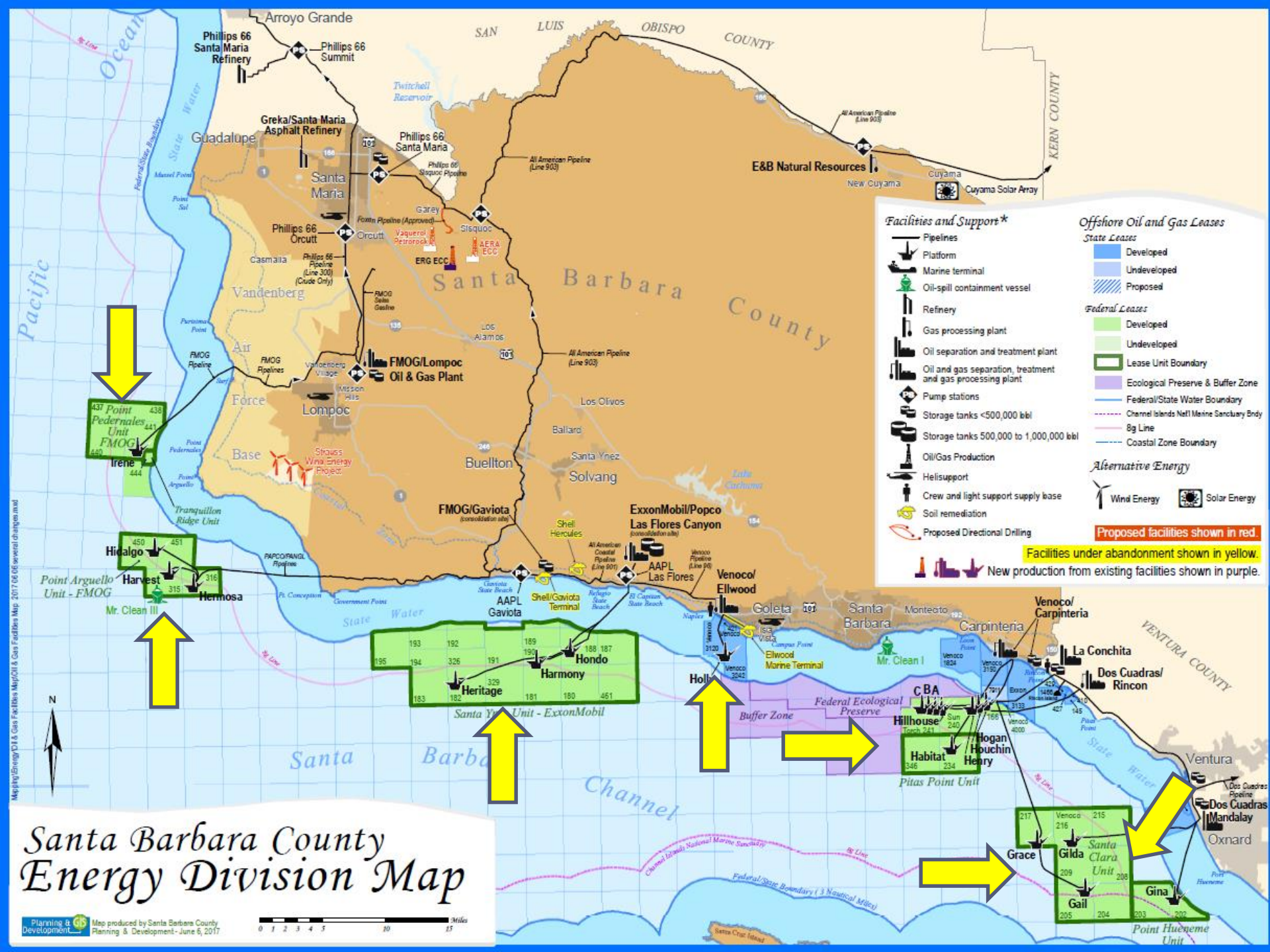
February 12, 2019

Overview

Today's briefing on:

- Onshore Oil & Gas Development
- Offshore Oil & Gas Development
- Compliance & Inspection Results
- Federal Oil & Gas Leasing Programs





Facilities and Support*

- Pipelines
- Platform
- Marine terminal
- Oil-spill containment vessel
- Refinery
- Gas processing plant
- Oil separation and treatment plant
- Oil and gas separation, treatment and gas processing plant
- Pump stations
- Storage tanks <500,000 bbl
- Storage tanks 500,000 to 1,000,000 bbl
- Oil/Gas Production
- Helisupport
- Crew and light support supply base
- Soil remediation
- Proposed Directional Drilling

Offshore Oil and Gas Leases

- State Leases**
- Developed
 - Undeveloped
 - Proposed
- Federal Leases**
- Developed
 - Undeveloped
 - Lease Unit Boundary
 - Ecological Preserve & Buffer Zone
 - Federal/State Water Boundary
 - Channel Islands Natl Marine Sanctuary Bdry
 - 8g Line
 - Coastal Zone Boundary

Alternative Energy

- Wind Energy
- Solar Energy

Proposed facilities shown in red.

Facilities under abandonment shown in yellow.

New production from existing facilities shown in purple.

Santa Barbara County Energy Division Map

Mapping/Engineering/D1 & Gas Facilities Map/2017 06 several changes.mxd



Facilities and Support*

- Pipelines
- Platform
- Marine terminal
- Oil-spill containment vessel
- Refinery
- Gas processing plant
- Oil separation and treatment plant
- Oil and gas separation, treatment and gas processing plant
- Pump stations
- Storage tanks <500,000 bbl
- Storage tanks 500,000 to 1,000,000 bbl
- Oil/Gas Production
- Helisupport
- Crew and light support supply base
- Soil remediation
- Proposed Directional Drilling

Offshore Oil and Gas Leases

- State Leases**
- Developed
 - Undeveloped
 - Proposed
- Federal Leases**
- Developed
 - Undeveloped
 - Lease Unit Boundary
 - Ecological Preserve & Buffer Zone
 - Federal/State Water Boundary
 - Channel Islands Nat'l Marine Sanctuary Boundary
 - 8g Line
 - Coastal Zone Boundary

Alternative Energy

- Wind Energy
- Solar Energy

Proposed facilities shown in red.

Facilities under abandonment shown in yellow.

New production from existing facilities shown in purple.

Santa Barbara County Energy Division Map

Mapping/Engineering/D1 & Gas Facilities Map/DCI & Gas Facilities Map: 2017.06 (several changes).mxd



Facilities and Support*

- Pipelines
- Platform
- Marine terminal
- Oil-spill containment vessel
- Refinery
- Gas processing plant
- Oil separation and treatment plant
- Oil and gas separation, treatment and gas processing plant
- Pump stations
- Storage tanks <500,000 bbl
- Storage tanks 500,000 to 1,000,000 bbl
- Oil/Gas Production
- Helisupport
- Crew and light support supply base
- Soil remediation
- Proposed Directional Drilling

Offshore Oil and Gas Leases

- State Leases**
- Developed
 - Undeveloped
 - Proposed
- Federal Leases**
- Developed
 - Undeveloped
 - Lease Unit Boundary
 - Ecological Preserve & Buffer Zone
 - Federal/State Water Boundary
 - Channel Islands Nat'l Marine Sanctuary Boundary
 - 8g Line
 - Coastal Zone Boundary

Alternative Energy

- Wind Energy
- Solar Energy

Proposed facilities shown in red.

Facilities under abandonment shown in yellow.

New production from existing facilities shown in purple.

Santa Barbara County Energy Division Map

Mapping/Engineering/D1 & Gas Facilities Map/DCI & Gas Facilities Map: 2017.06 (several changes).mxd

Petroleum Unit Inspection Results 2015 - 2018

- County Petroleum Staff inspects over 2,450 existing wells and 125 related facilities annually
- 156 violations issued during the four-year period, 134 directed toward a single operator (HVI Cat Canyon, Inc.)
- High of 65 violations in 2017
- Approximately \$154,000 collected in fines in 2017/2018

Fire Department Inspection Results 2015-2018

- Approximately 140 facilities inspected annually
- 732 violations issued over the four-year period
- 392 violations given to a single operator
- High of 381 violations issued in 2016
- Most violations considered minor in nature and corrected in a timely manner

APCD Inspection Results 2015-2018

- Approximately 70 stationary sources inspected
- 250 violations issued over the four-year period
- High of 71 violations issued in 2016
- 125 violations issued to a single operator (HVI Cat Canyon, Inc.)
- Approximately \$466,000 collected in fines in 2017/2018

Spill Statistics 2015-2018

- 34 spills reported during four-year period
- Spills did not impact active waterways
- Spills range in size from 1 barrel to 150 barrels
- 2018 had highest spill volumes
 - 150 barrels of crude oil
 - Spill confined to secondary containment area.

EHS Inspection Results 2017-2018

- Approximately 29 facilities inspected
- 10 violations issued over the two-year period
- 3 violations issued to a single operator
- Most violations considered minor in nature and corrected in a timely manner

DOGGR Inspection Results 2017-2018

- Approximately 500 facilities inspected
- 196 violations issued over the two-year period
- 68 violations issued to a single operator
- Examples of violations issued include: Spills, environmental lease inspection violations, overdue Underground Injection Control tests, and non-compliant berms around tanks.

RWQCB Inspection Results 2017-2018

- Two violations for Oil & Gas related activities
 - HVI Cat Canyon, Inc.: Failure to submit technical report detailing potential injection well casing breach
 - Gaviota Terminal Company: Work activities within Alcatraz Creek exceed the scope of approved work plan
- RWQCB is working with HVI Cat Canyon, Inc. to obtain additional information to understand the scope of well failure.

Operational Status

- Venoco
 - Platform Holly & associated onshore processing facilities to be removed
- Plains Pipeline
 - Pipeline remains empty and shut in.
 - Application submitted to construct replacement pipeline
- Exxon
 - Las Flores Canyon facility and the three offshore platforms are currently shutdown
 - Application submitted to transport oil via trucking until Plains Pipeline becomes available

Operational Status (con't.)

- Pt. Arguello -
 - Platforms & onshore processing facility shutdown
 - Platforms and onshore facilities will be decommissioned
- Pt. Pedernales
 - Platform Irene & Lompoc Oil and Gas Facility remain operational

Proposed Projects - Onshore

INSET - NEW CUYAMA AREA

SAN LUIS OBISPO COUNTY

AERA
296 wells
EIR in Progress

ERG Resources
233 wells
EIR in Progress

PetroRock
231 wells
EIR in Progress

Northwestern Santa Barbara County Oil and Gas (Onshore) Production Fields and Wells

- Active Well (black dot)
- Inactive Well (grey dot)
- Oil or Gas Production Field
- Administrative Field Boundary

Underground Injection Control Aquifer Exemptions

- DOGGR and RWQCB responsible for reviewing & preparing aquifer exemptions
 - Cat Canyon Oil Field: Exemption application planned to be released for public review in February 2019.
 - Lompoc Oil Field :
 - Main Area: All current injection confined to the approved Monterey formation.
 - Northwest Area: Application currently under RWQCB review
 - Casmalia and Zaca Oil Fields: Current injection activities are within exempted aquifers.

Federal Outer Continental Shelf Leasing Program

- Proposed program for 2019 – 2024 would replace the current 2017– 2022 program
- Multi-step federal process, numerous opportunities for public input
- Next step is to seek public review & comment on draft proposed leasing program

BLM Leasing Program

Hydraulic Fracturing on Public Lands

- Notice of Intent released in August 2018 to solicit comments for preparation of a supplemental EIS
- EIS would analyze impacts of hydraulic fracturing technology on public land and mineral estates in central portion of California.
- Multi-step federal process, numerous opportunities for public input
- Next step: Public review & comment on draft supplemental EIS planned for release in 2019

Thank You