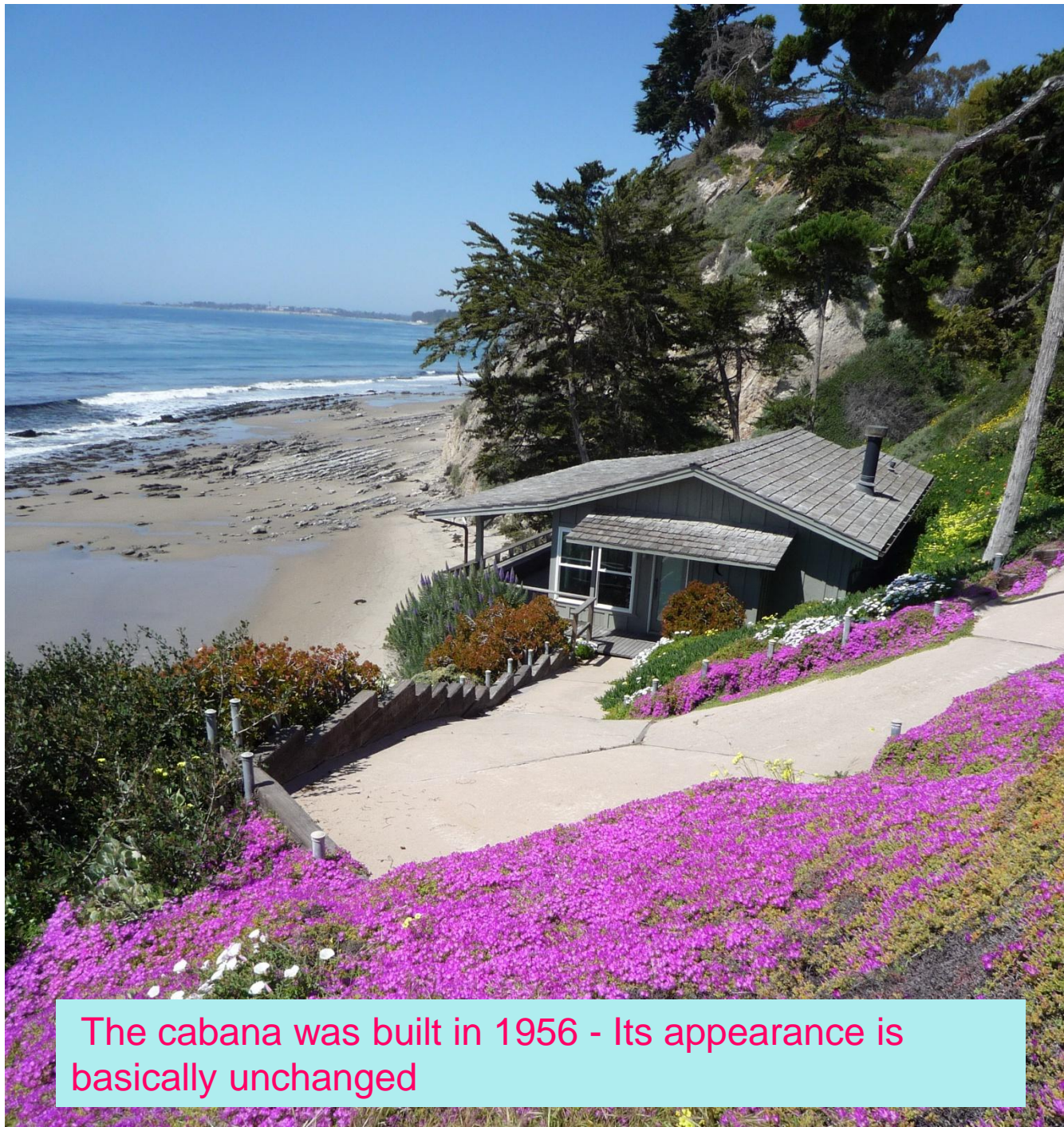


THE IRENE AND FRANCES RICH CABANA

Hope Ranch
Santa Barbara, California

March 6, 2012



The cabana was built in 1956 - Its appearance is basically unchanged

County Code Section 18A Governs Landmarking

What makes a property eligible for *Place of Historic Merit* or *Landmark* status?

The building or site must be located within the unincorporated area of Santa Barbara County and meet one or more of the following criteria:

- 1. ** It exemplifies or reflects a special element of the county's history;**
- 2. ** It is identified with a significant historical person or event;**
3. It demonstrates a distinctive style, type, period or method of construction/craftsmanship;
4. It represents the work of a notable builder, designer or architect;
5. It contributes to the significance of an historic area;
- 6. ** It has unique physical characteristics representing an established and familiar visual feature;**
7. It embodies elements of architectural or craftsmanship that represent significant achievement or innovation;
8. It reflects significant geographical patterns associated with different eras of settlement and growth;
or,
- 9. ** It is one of the few remaining examples of its type possessing distinguishing architectural or historical characteristics.**

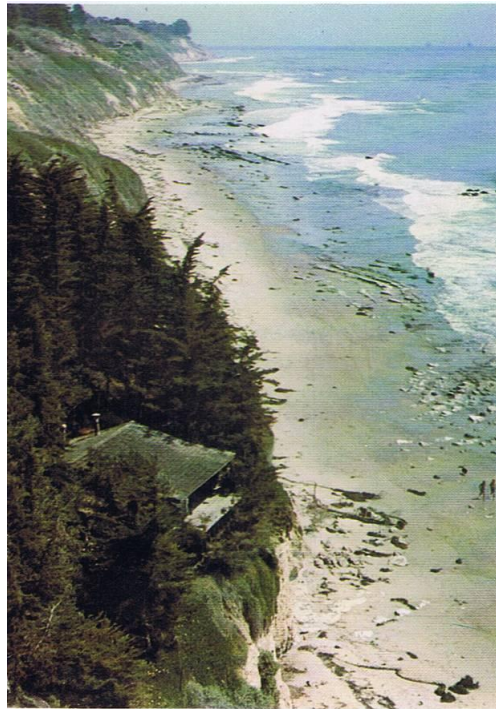
**** THESE WERE SELECTED BY THE HLAC FOR ITS TWO UNANIMOUS RESOLUTIONS**

The Cabana Meets the Requirements of 18A

HLAC unanimously nominated it twice because it meets 4 requirements - only one is required.

- It has unique physical characteristics and is an established and familiar visual feature of Hope Ranch
- It is identified with persons of significance.
- It reflects special elements of the County's cultural, social and aesthetic history.
- It is one of a few remaining examples.

It is a Unique and Familiar Feature of Hope Ranch



Its appearance in the early 1970's

It represented its creators' vision of the "California Dream"; A simple structure in a magical and seemingly isolated seaside setting. There are few left and there can be no more.

It is a Unique and Familiar Feature of Hope Ranch



Cabana

This is today – The cabana’s appearance and setting are basically unchanged since its original construction in 1956.

The Italian Mansion to the far left has replaced the Rich home and studios in Hope Ranch.

It is a Unique and Familiar Feature of Hope Ranch



The view from the Cabana porch: The sea, the sky, the birds and the dolphins swimming by all help to create a magical setting.

IT CAN NEVER BE REPLACED.

IT IS IDENTIFIED WITH PEOPLE OF SIGNIFICANCE

- Irene Rich – Designer, “hands on” builder
- Frances Rich – Designer, “hands on” builder
- W. Don MacGillivray – Designer, builder
- Harold Chase – Changed Hope Ranch rules
- Pearl Chase – Helped with landscaping

IT IS IDENTIFIED WITH PERSONS OF SIGNIFICANCE Frances and Irene Rich



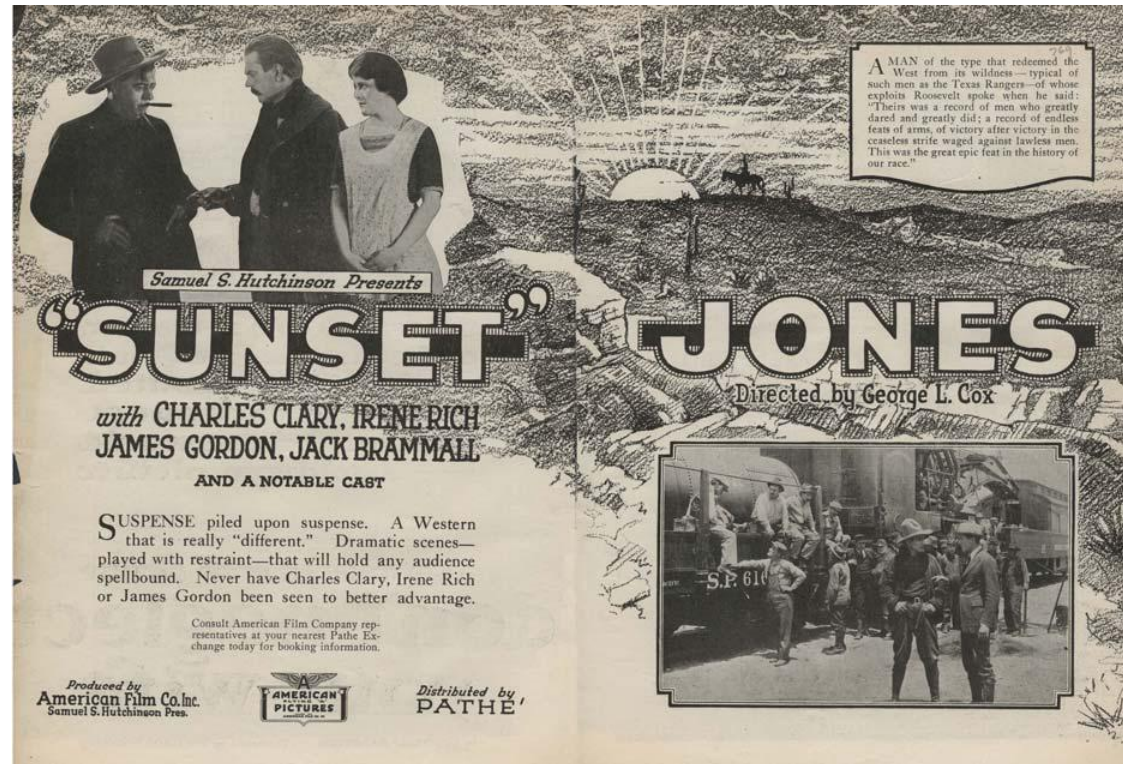
At Their Hope Ranch Home

IT IS IDENTIFIED WITH PERSONS OF SIGNIFICANCE Irene Rich -Star of Films



Irene appeared in over 100 credited roles in Hollywood
and Flying A productions

IT IS IDENTIFIED WITH PERSONS OF SIGNIFICANCE Irene Rich - Star of Films



Irene starred in one of the last films of Santa Barbara's Flying A Studio

IT IS IDENTIFIED WITH PERSONS OF SIGNIFICANCE Irene Rich - Star of Films



This is Irene with Will Rogers. He used her in eight of his films as a favorite star.

IT IS IDENTIFIED WITH PERSONS OF SIGNIFICANCE Irene Rich - Star of Films



A sample of Irene's more than 100 credited roles.
Many are still available for sale and viewing.

IT IS IDENTIFIED WITH PERSONS OF SIGNIFICANCE Irene Rich - Star of Films



Irene dances with Henry Fonda and Shirley Temple in “Fort Apache”

IT IS IDENTIFIED WITH PERSONS OF SIGNIFICANCE Irene Rich - Star of Films



Irene and Jackie Cooper in "The Champ".

IT IS IDENTIFIED WITH
PERSONS OF SIGNIFICANCE
Irene Rich - Star of Films



Irene in "Lady Windemere's Fan"

IT IS IDENTIFIED WITH PERSONS OF SIGNIFICANCE Irene Rich - Star of Films



Irene in "Strongheart - Brawn of the North"

IT IS IDENTIFIED WITH PERSONS OF SIGNIFICANCE Irene Rich - Star of Films



Irene with John Wayne in “Angel and the Badman”
the only film Wayne ever produced

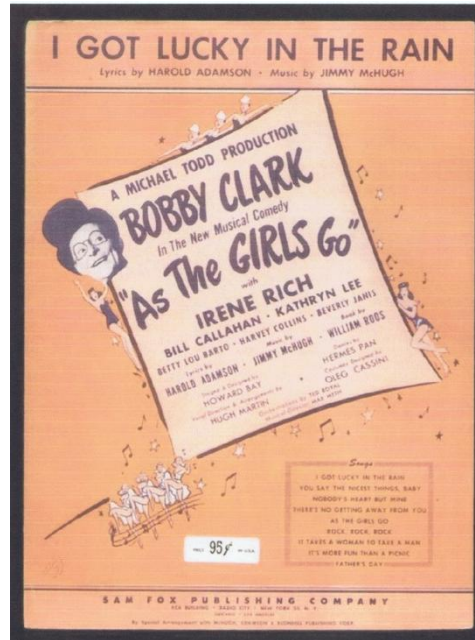
IT IS IDENTIFIED WITH PERSONS OF SIGNIFICANCE Irene Rich Has Two Stars



Irene's "Star" for motion pictures on the Hollywood Walk of Fame.

Her career spanned silent films and "talkies" for three decades.

IT IS IDENTIFIED WITH PERSONS OF SIGNIFICANCE Irene Rich - Star of the Stage



Irene starred on Broadway with comic Bobby Clark

She played the first female United States President.

IT IS IDENTIFIED WITH PERSONS OF SIGNIFICANCE Irene Rich Has Two Stars

Irene coined the term “Dear John Letter” reading “break up” letters in her decade-running radio show series “Dear John” sponsored by Welch’s Grape Juice



Irene's star for radio
on the Hollywood Walk of Fame

IT IS IDENTIFIED WITH PERSONS OF SIGNIFICANCE

Irene Rich



Irene Rich
"Miss Fennell" is the latest release from the most famous of the world's leading actresses who has every one of her admirers in a state of rapture. She is the most beautiful woman of her generation. In her latest role, she plays the part of a young girl who has been orphaned and is taken in by a family. Her performance is so convincing that she has won the hearts of all who have seen her. She is the most beautiful woman of her generation. In her latest role, she plays the part of a young girl who has been orphaned and is taken in by a family. Her performance is so convincing that she has won the hearts of all who have seen her.

**When Your Body is Wary
 —and your spirit needs reviving, quick!**

Don't munch. Instead, "drink a bunch of grapes." For Welch's abundance in mineral salts, saturating acids and fruit proteins, so invaluable to vigor—ends exhaustion with an almost magic quickness—replaces burned-up energy without adding a single undesired ounce to one's weight.

Whether for between-meal hunger or as a beverage, Welch's is an essential in the modern home. Serve it every day throughout the year, especially for breakfast. You will probably want to add one-third to one-half water, for this delightful beverage is unfermented goodness. That is why it costs less than any other form of fruit.

Be sure to ask for Welch's by name. Only then can you be sure of pure pasteurized fruit juice bottled under rigid laboratory control.

FREE! Write for the "WGA" Wine to Health Card and Recipe Book. Address: Welch's, Dept. 1111, Hopedale, New York.

the new 2000R size 10¢
wherever 2000R size 10¢
 also in 2000, 200
 health liquid size 10¢

Welch's
 PASTEURIZED
GRAPE JUICE



Irene was Welch's most powerful sales person increasing sales by 638%!!!

IT IS IDENTIFIED WITH PERSONS OF SIGNIFICANCE



Irene Rich
uses

*"It is with great pleasure that I express my admiration for MAYBELLINE which I have used for some time with most gratifying results. It is truly an indispensable beauty aid to the woman who would look her best."
—Irene Rich*

"MAYBELLINE"—as though by magic, would make a wonderful difference in your attractiveness. Try it and see! Instantly, your lashes will appear naturally long, dark and luxuriant. And your eyes will become expressive deep shadowy pools of enchanting loveliness. Nothing else gives quite the same effect as 'MAYBELLINE' because the formula of this wondrous beauty aid is secret.

Moreover, 'MAYBELLINE' is perfectly harmless, having been used for many years by millions of beautiful women in all parts of the world. Obtain it in either the solid form or the waterproof liquid—Black or Brown—75c at all toilet goods counters.

Irene Rich
Star in
Wayne's
Pictures

Maybelline
Eyelash Beautifier

MAYBELLINE CO.
CHICAGO

Irene Rich Business Woman

- Real Estate Sales – San Francisco
- Stock Farm Owner and Operator – Los Angeles, (Food, Feed, Poultry and Livestock)
- Spokeswoman – LUX Soap, Maybelline

IT IS IDENTIFIED WITH PERSONS OF SIGNIFICANCE Irene Rich and Diego Rivera



Diego Rivera dedicated this self-portrait to Irene. The note reads:

“I painted this portrait for the beautiful and famous artist Irene Rich and it was done in the city of Santa Barbara of Southern California during the month of January of the year 1941.”

IT IS IDENTIFIED WITH PERSONS OF SIGNIFICANCE Irene Rich and Diego Rivera



She's right on the money!!!



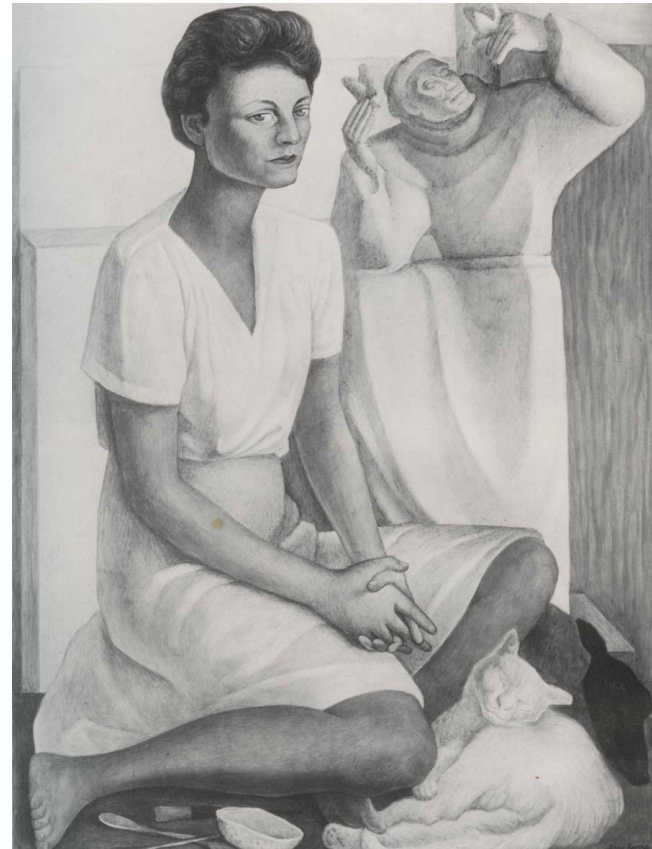
“DIEGO RIVERA AUTORRETRADO DEDICADO A IRENE RICH”

Translation - Diego Rivera Self-Portrait Dedicated to Irene Rich

IT IS IDENTIFIED WITH PERSONS OF SIGNIFICANCE Irene Rich and Diego Rivera

Irene commissioned Diego Rivera to paint this fresco for Frances' birthday.

Rivera stayed with the Richs' while he did this painting.



IT IS IDENTIFIED WITH PERSONS OF SIGNIFICANCE Irene, Frances and Diego Rivera



Diego Rivera with Irene and Frances at the Rich home in Hope Ranch

IT IS IDENTIFIED WITH PERSONS OF SIGNIFICANCE Frances Rich -Star of Film and Stage

AS AN ACTRESS

- A Broadway performance in production “Brief Moment”
- A brief Hollywood career in “Diamond Trail”, “Unholy Love”, “The Thirteenth Guest”, “Officer 13”, “Zoo in Budapest” and “Pilgrimage”.



IT IS IDENTIFIED WITH PERSONS OF SIGNIFICANCE Frances Rich

“Birthdays needn’t make
you Old!” — *says Irene Rich*

“A screen star never worries about birthdays,” this lovely star says, “as long as she doesn’t look old. To hold her public she must keep the fresh loveliness of youth

“That is why in Hollywood we guard complexion beauty above all else”

Of the 604 important Hollywood actresses actually 686 use Lux Toilet Soap! You, too, will find this white fragrant soap the perfect complexion care! Buy several cakes and begin to use it today. Only 10¢ a cake!



“I’m 40”

An Irene LUX Ad

Frances carved miniature sculptures from soap bars her mother received from promoting LUX.

Malvina Hoffman, a famed sculptress, noticed her talent and offered formal training if she could get to Paris.

Ray Skofield provided the funds for that trip.

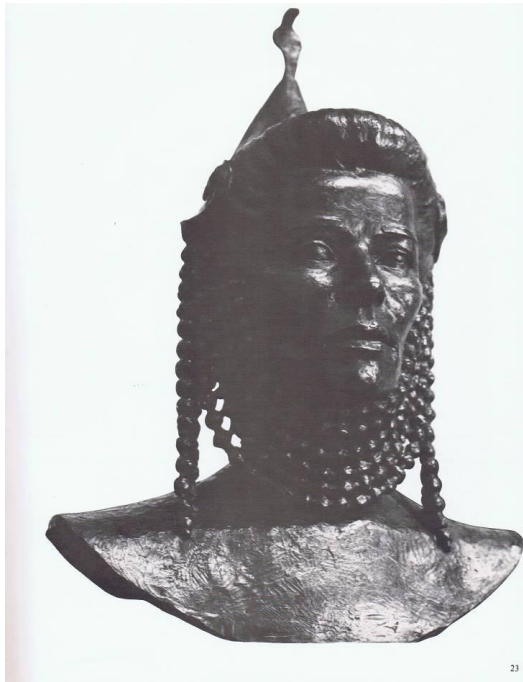
IT IS IDENTIFIED WITH PERSONS OF SIGNIFICANCE Frances Rich and Lottie Lehman



Frances sculpts famed opera singer Lottie Lehman in her Hope Ranch studio

This and 48 of Frances' other works were featured in a "one-woman"
show at the Santa Barbara Museum of Art

IT IS IDENTIFIED WITH PERSONS OF SIGNIFICANCE Frances Rich and Katharine Hepburn



Katharine Hepburn was Frances' close friend and traveling companion for more than two decades.

She and Frances used the cabana to relax and enjoy each others company.

IT IS IDENTIFIED WITH PERSONS OF SIGNIFICANCE Frances Rich and Katharine Hepburn



“This bronze Bas-Relief Tondo of Katharine Hepburn, currently on display in Athens, is one of Rich’s most accomplished portraits.” according to Rogakos Megakles, curator of her exhibit “La Gazelle” at The American College of Greece

IT IS IDENTIFIED WITH PERSONS OF SIGNIFICANCE Frances Rich - Sculptress



“The Singing Saint Frances”

This stood for decades on the Hope Ranch bluff overlooking the cabana.
Their home and her studios are now gone.

IT IS IDENTIFIED WITH PERSONS OF SIGNIFICANCE

Frances Rich - Sculptress

“Our Lady of Combermere”

A visit by the Sisters of
The Blessed Virgin Mary of
Madonna House in Frances’
Hope Ranch studio.

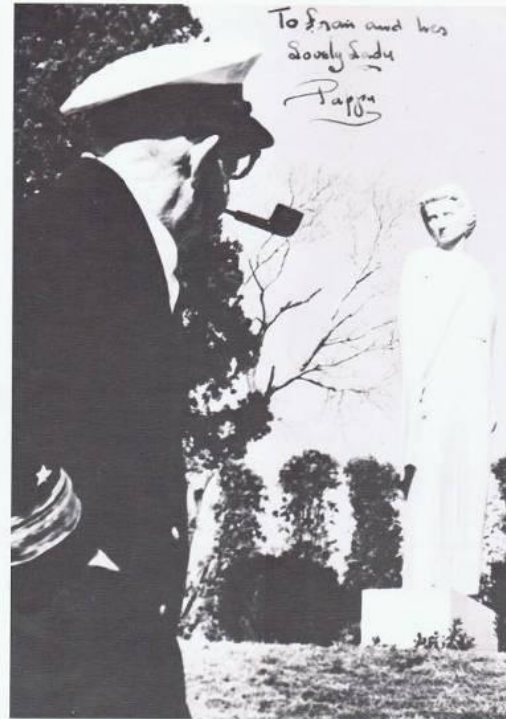
Prior to delivery, the von Trapp
Family of Sound of Music fame,
came to see it and burst into
song as a ray of sunshine
suddenly lit the Virgin’s face.



IT IS IDENTIFIED WITH PERSONS OF SIGNIFICANCE Frances Rich - Arlington Cemetery

Frances served as a naval officer in World War II. She created an Arlington National Cemetery memorial “The Nurse”.

Admiral John Ford, USNR, who commissioned the statue writes: “To Fran and her lovely lady” Pappa.



69 Photo Portrait, 3x4 of Frances Rich by Diego Rivera
(Photo credit: Wm. E. Gladstone—194)

70 Admiral John Ford, USNR and the Memorial to the American Nurses at Arlington National Cemetery, Washington, D.C.
(Photo credit: U.S. Navy—1962)

IT IS IDENTIFIED WITH PERSONS OF SIGNIFICANCE Frances Rich and Diego Rivera



Frances sculpts Diego as he works on his self portrait dedicated to Irene.

IT IS IDENTIFIED WITH PERSONS OF SIGNIFICANCE Frances Rich - Historical Museum



“Treasures” Exhibit – Santa Barbara Historical Museum 2011
Included the original Diego Rivera Bust and Katharine Hepburn Mask

IT IS IDENTIFIED WITH PERSONS OF SIGNIFICANCE Frances Rich - Cottage Hospital



“The Healer” – Reeves Medical Library in Cottage Hospital

IT IS IDENTIFIED WITH PERSONS OF SIGNIFICANCE Frances Rich - Historical Museum



Saint Francis in the Santa Barbara Historical Museum Courtyard

IT IS IDENTIFIED WITH PERSONS OF SIGNIFICANCE Frances Rich - Sculptress



Frances with her last model, Tina Jackson. She passed away in 2007 at the age of 97. She kept the Hope Ranch home until 1995 when Irene passed away at the age of 96 in Hope Ranch.

IT IS ASSOCIATED WITH PERSONS OF SIGNIFICANCE Frances Rich - Artist

Frances donated the major portion of her very extensive art collection to

THE AMERICAN COLLEGE OF GREECE.

It has an exhibit honoring her 100th birthday entitled

“FRANCES RICH – La Gazelle”

It began on December 13, 2010 and is still running today

The college has plans to open
THE FRANCES RICH SCHOOL OF ART.

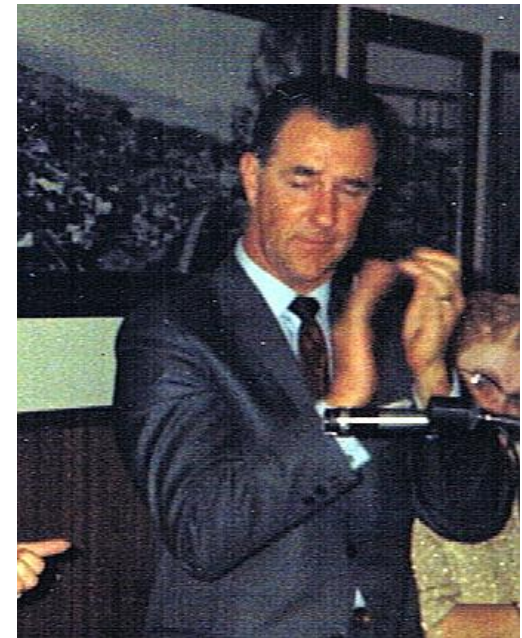
IT IS IDENTIFIED WITH PERSONS OF SIGNIFICANCE Don MacGillivray - Shoreline Park



Shoreline Park Memorial dedicated to his efforts to help create it

IT IS IDENTIFIED WITH PERSONS OF SIGNIFICANCE

Don MacGillivray – Two term Mayor,
Councilman and State Legislator



“His efforts were instrumental in the preservation of this land for [Shoreline Park] for the people of the city he so loved.”

IT IS IDENTIFIED WITH PERSONS OF SIGNIFICANCE

Don MacGillivray – Presidential Appointee to
National Capitol Planning Commission



W. Don and Dee MacGillivray accompany the Reagans on Air Force One 44

IT IS IDENTIFIED WITH PERSONS OF SIGNIFICANCE

Don MacGillivray – Presidential Appointee to
National Highway Safety Council



Air Force One
“That Presidential Look”
picture published with article
Santa Barbara News Press 1987

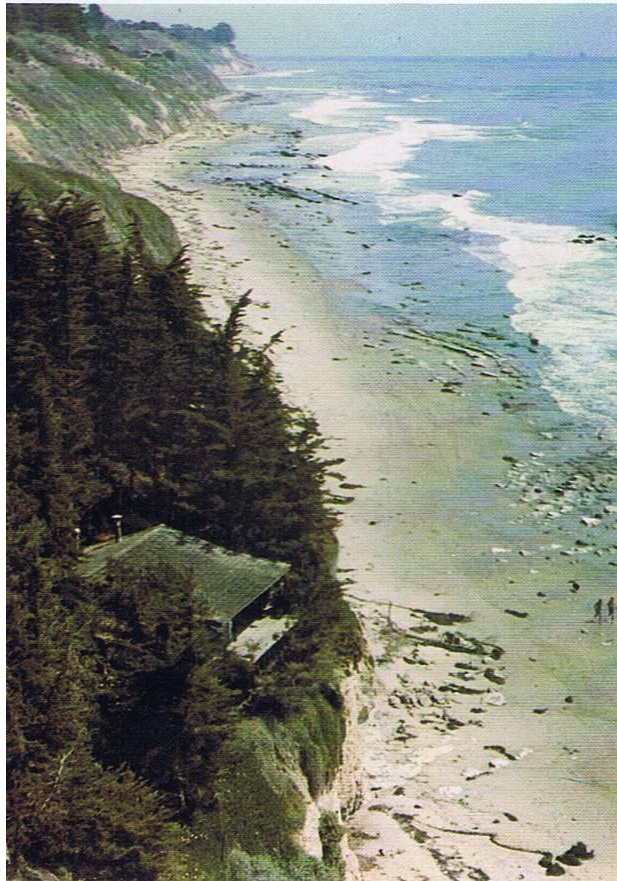
IT IS IDENTIFIED WITH PERSONS OF SIGNIFICANCE Harold and Pearl Chase



“...many contributions to Santa Barbara’s beauty and welfare”

IT IS IDENTIFIED WITH PERSONS OF SIGNIFICANCE

Pearl Chase helped with the trees

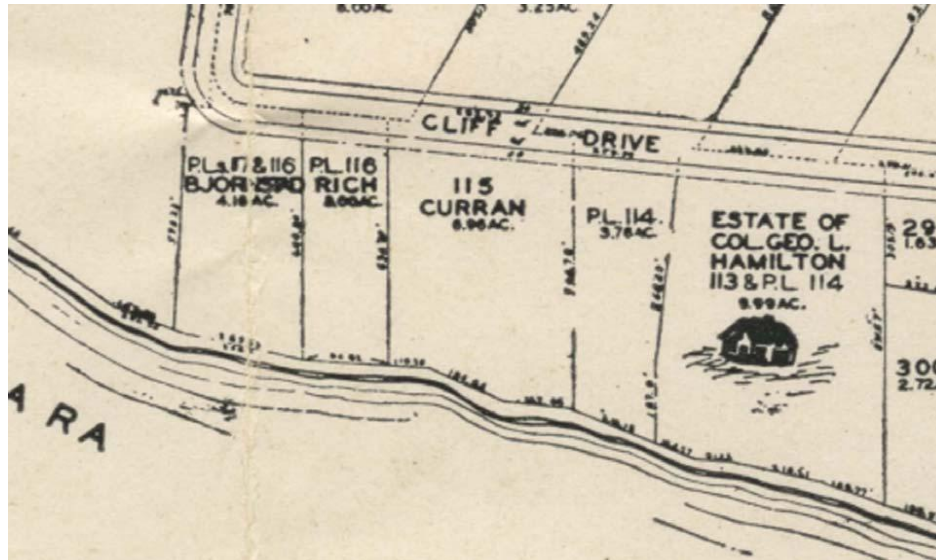


The cabana was surrounded by Monterey Cypress planted by the Richs with the help of PEARL CHASE.

The cabana was Irene's and Frances' "California Dream". They wanted it to look like a scene from Big Sur - they succeeded.

(Photo from late 1960's/early 1970's)

IT IS IDENTIFIED WITH PERSONS OF SIGNIFICANCE Harold Chase helped with the setting



Harold Chase, President of Hope Ranch Estates, helped create the setting. He split Lot 115 several times in unusual ways and changed the Hope Ranch requirements allowing the cabana to be built .

IT HAS UNIQUE PHYSICAL CHARACTERISTICS

A Unique Structure in a Unique Setting from a By-gone Era.
Only a few remain as a symbol of the “California Dream”



IT HAS UNIQUE PHYSICAL CHARACTERISTICS

A Unique Structure in a Unique Setting from a Bygone Era.
Only a few remain as a symbol of the “California Dream”.



IT REFLECTS SPECIAL ELEMENTS OF CULTURAL AND SOCIAL HISTORY: A Community of the Arts and Artists

Irene and Frances created a magnetic setting for the arts and artists.

Some who lived on the Richs' Property

- . William Rohrbach, Professor UCSB
- . Charles Lloyd, Jazz Musician
- . Charlie Piper, M.D.
- . Ray Strong, Artist and founder of the Oak Group

Some who visited the Richs' Property

- Vivian Lee, Actress
- Katharine Hepburn, Actress
- Diego Rivera, Artist
- Channing Peake, Artist – Guest at the Rich Home

A Community of the Arts and Artists



To Whom it May Concern,

I'm sending this letter in support of the Cabana, which was once the former property of Irene and Francis Rich. The Cabana, for me, is an important part of the fabric of Santa Barbara history. So many artists and creative people stayed at the Cabana, and it would be a pity to lose a place of its significance to our community. My late husband, Channing, knew the Richs and was a visitor at their place, which was a meeting ground for artists, some with world famous reputations. The Cabana occupies a lovely spot, and it blends so well with the coastline. Please save this historically important structure for generations to come.

Sincerely yours, Cheri Peake

IT REFLECTS SPECIAL ELEMENTS OF CULTURAL AND SOCIAL HISTORY:

A Continuing Community of the Arts and Artists

Some who have vacationed in the Cabana include:

- Enzo Ferrari – Automobile Legend
- Steve McQueen, Legend and Ali McGraw
Actress
- Ann Margaret, Actress
- Rudolf Nureyev, Ballet Dancer
- E. Duke Vincent, TV Producer (“Dallas”) ⁵³

LANDMARKING IT HAS SUPPORT OF SANTA BARBARA'S PRESERVATION COMMUNITY

- The HLAC – Two Unanimous Resolutions
- The Pearl Chase Society
- The Santa Barbara Trust for Historic Preservation
- Michael Redmon, Santa Barbara Historical Museum
- Neal Graffy, Historian and Author
- Karl Hutterer, Museum of Natural History
- Joan Easton Lentz, Museum of Natural History
- Jane Rich Mueller, Served on the Board of the Historical Museum - Daughter of Irene and Sister of Frances Rich

Public Support is Unanimous

Samples of Broad Public Support

Dee MacGillivray, wife of designer/builder W. Don MacGillivray, and family

Hope Ranch Park Homes Association

Peter Becker, Becker Architecture and Owner, Flying A Studio

Robert Mott, Santa Barbara County Sheriff's Department

Ron Stotts, Local Author and Beach Walker

Hope Bryant, Former Owner, neighbor and acquaintance of Frances Rich

Matt Kallens, Former Owner, neighbor and "Beachcombing Buddy" of Frances

Betty Stevens, Philanthropist

William Mann, Katherine Hepburn Biographer

Diane Keaton, Actress

Martha Donelan, Laguna Blanca School

"Si" and Josiah Jenkins, Owners of Jedlicka's

Max Klett, Surfer

Dennis "Sunset Kidd" Longaberger, Sailor

The Irene and Frances Rich Cabana

Why Declare it a Landmark?

It meets four out of nine requirements of Section 18A and only one is required:

- **It is identified with persons of significance. Not one, not two, but FIVE luminaries were involved in its creation. All five are significant locally, three nationally and two internationally. Irene and Frances achieved that level of fame with their talent, determination and hard work.**
- **The cabana is a familiar visual feature of the community for over 55 years and is the last remnant of the Richs home that can never be replaced.**
- **It is one of the few remaining examples of its kind in our area.**
- **It reflects special elements of our County's history – The “California Dream”!!!**

Those in our local historic preservation community support its landmarking and preservation AND it is a “Jewel” that deserves to be added to the “Crown of Santa Barbara’s Landmark Glory!”