

SANTA BARBARA COUNTY

**Resource Recovery &  
Waste Management Division**

*Innovative Environmental Solutions*



# Solid Waste Rates for FY 25/26

- Facility Tipping Fees
- New Cuyama Parcel Fees
- Maximum Franchised Hauler Collection Rates
  - Pursue restructuring the maximum solid waste collection fee schedule for Isla Vista

# Facility Tipping Fees

- Tipping fees pay for solid waste, recycling, organics, and hazardous waste processing at the South Coast and Santa Ynez Recycling and Transfer Stations, the ReSource Center, Tajiguas Landfill, and the Community Hazardous Waste Collection Center
- Tipping fees are evaluated annually and increased to the extent needed to meet the Division's debt obligations
- Franchised trash and recyclables tip fees for FY 25-26 will increase 3.97% from \$189 to \$196.50 per ton at all County facilities



# Cuyama Valley Parcel Fees

- Assessed on annual property tax
- \$77 per single-family dwelling
- Fees support New Cuyama and Ventucopa transfer stations
- No change recommended at this time; however, the fees will be evaluated in the upcoming year





# Maximum Franchised Hauler Collection Rates



# Collection Rates Driven by Three Components

## 1. Collection Component

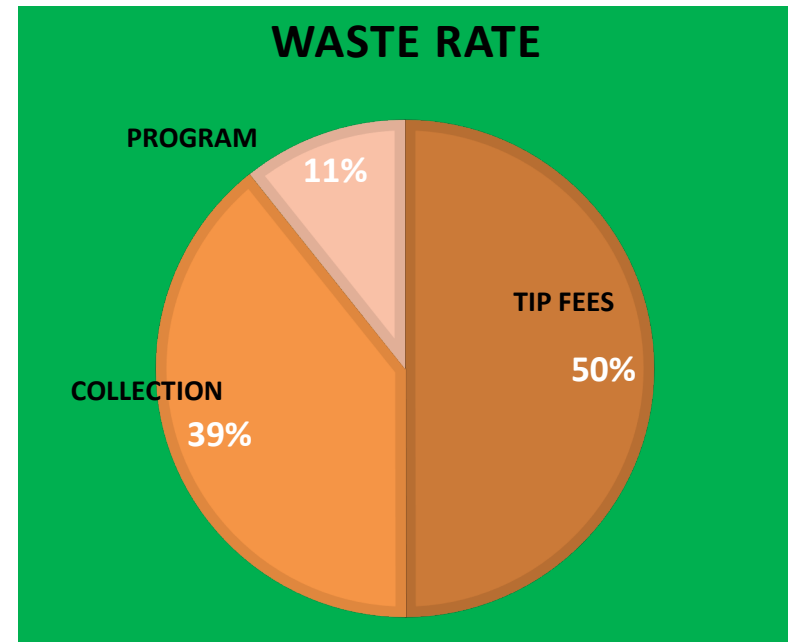
- Subject to CPI adjustment of 3.3%

## 2. Tipping Fee Component

- Zones 1-3 and Zone 4 Santa Ynez
  - 3.97% trash tip fee increase
- Zone 4 Lompoc Valley
  - 4.76% trash tip fee increase
- Zone 5
  - 5.26% trash tip fee increase

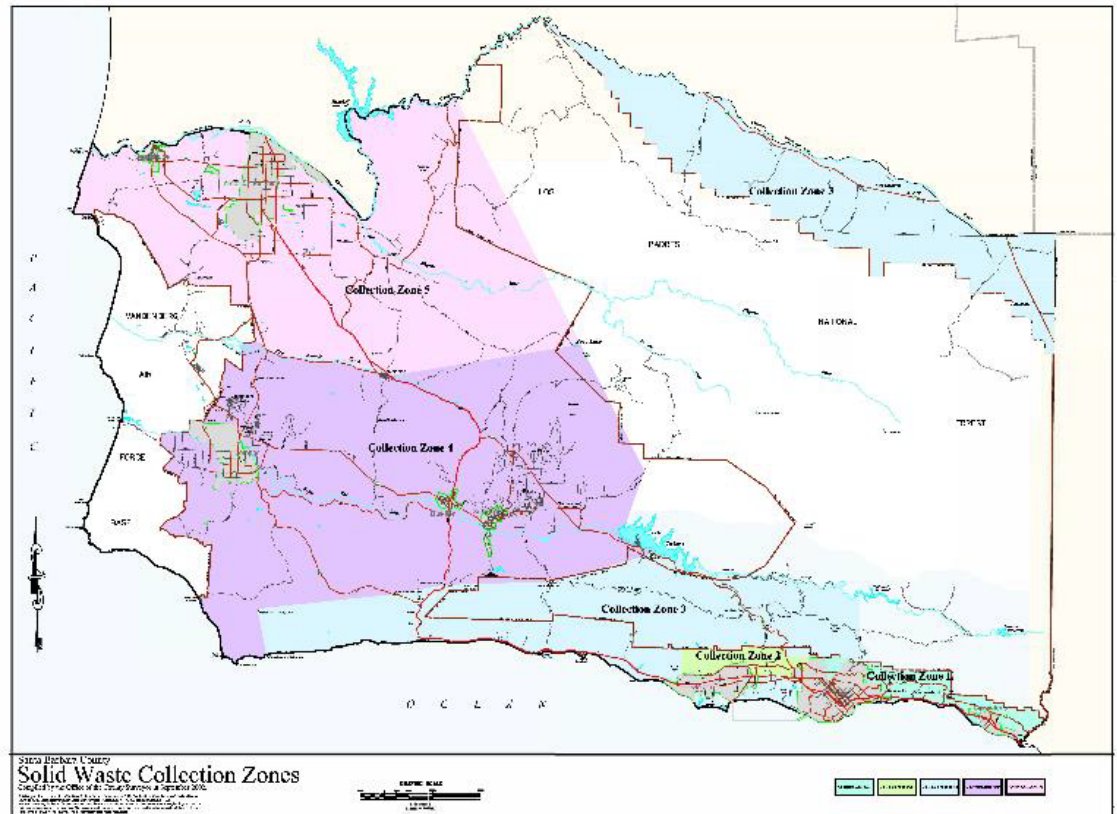
## 3. Solid Waste Program Fee Component

- No change; remains 11%



# Zones 1-3

- Waste service will continue to be provided by MarBorg Industries per the Zone 1-3 Franchise Agreement approved by the Board on May 24, 2022
- Average 3.87% increase for residential and commercial rates



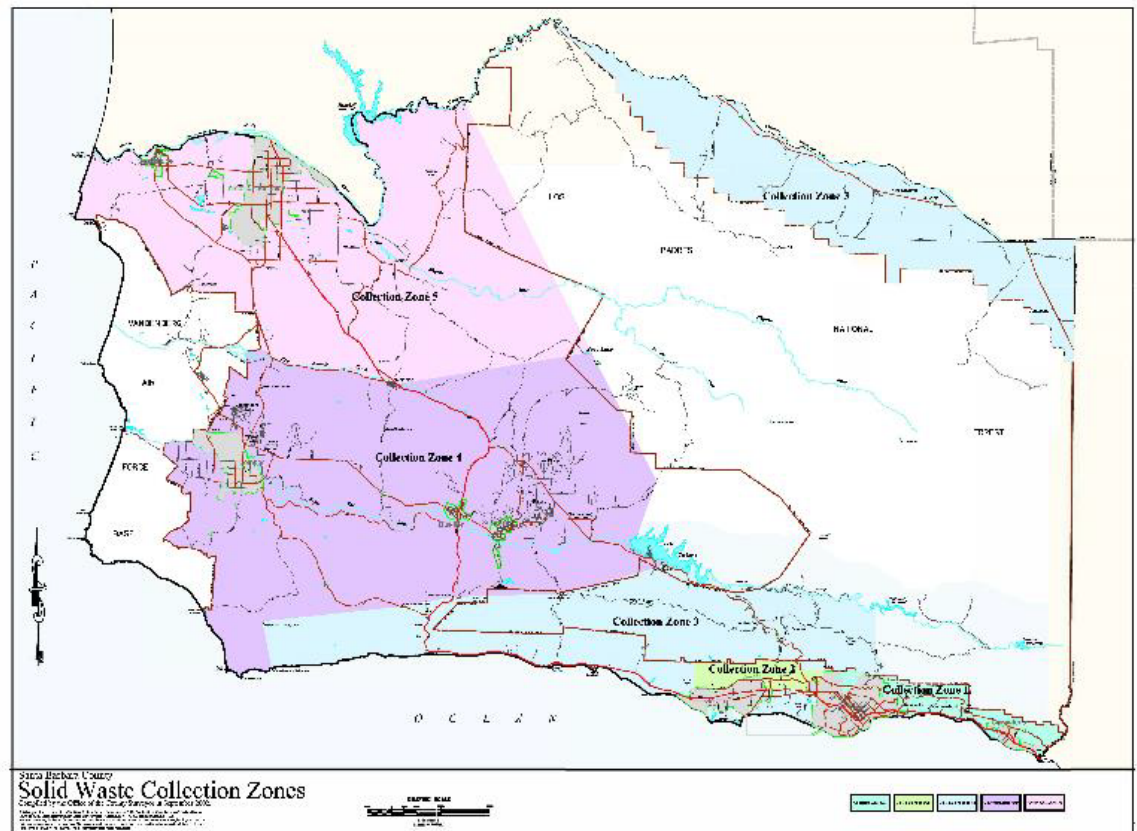
# Zones 1-3

Service Level	Current FY 24/25 Monthly Rate	Proposed FY 25/26 Monthly Rate	% Change
Z1 - High Density Residential (96 gallon)	\$69.25	\$71.71	3.6%
Z1 - Low Density Residential (96 gallon)	\$86.95	\$90.00	3.5%
Z1 - Commercial Trash (2 yard)	\$256.74	\$266.18	3.7%
Z1 - Commercial Recycling (2 yard)	\$188.12	\$194.93	3.6%
Z2 - Residential (96 gallon)	\$65.92	\$68.33	3.7%
Z2 - Commercial Trash (2 yard)	\$259.61	\$268.96	3.6%
Z2 - Commercial Recycling (2 yard)	\$225.10	\$233.13	3.6%
Z3 Mission Canyon/IV - Residential (96 gallon)	\$57.75	\$59.82	3.6%
Z3 Hope Ranch - Residential (96 gallon)	\$69.91	\$72.39	3.5%
Z3 Goleta - Residential (96 gallon)	\$64.64	\$67.00	3.7%
Z3 - Commercial Trash (2 yard)	\$215.72	\$223.63	3.7%
Z3 - Commercial Recycling (2 yard)	\$185.31	\$192.04	3.6%
Z3 IV - Commercial Trash (2 yard)	\$241.72	\$250.58	3.7%
Z3 IV - Commercial Recycling (2 yard)	\$190.24	\$197.13	3.6%



# Zones 4 & 5

- Waste service will continue to be provided by MarBorg Industries per the Zones 4 & 5 Franchise Agreement approved by the Board on July 11, 2023
- Average 3.21% increase for residential and commercial rates



# Zones 4 & 5

Service Level	Current FY 24/25 Monthly Rate	Proposed FY 25/26 Monthly Rate	% Change
Z4 Santa Ynez - Residential (96 gallon)	\$50.77	\$52.61	3.6%
Z4 Santa Ynez - Commercial Trash (2 yard)	\$254.11	\$263.34	3.6%
Z4 Santa Ynez - Commercial Recycling (2 yard)	\$242.07	\$250.08	3.3%
Z4 Lompoc - Residential (96 gallon)	\$40.70	\$42.21	3.7%
Z4 Lompoc - Commercial Trash (2 yard)	\$179.98	\$186.54	3.6%
Z4 Lompoc - Commercial Recycling (2 yard)	\$180.28	\$180.28	0.0%
Z5 - Residential (96 gallon)	\$42.46	\$44.09	3.8%
Z5 - Commercial Trash (2 yard)	\$192.87	\$200.35	3.9%
Z5 - Commercial Recycling (2 yard)	\$143.66	\$148.42	3.3%

# Miscellaneous Rate Adjustments

- Rate Decreases
  - Manure
  - Zone 4-Lompoc Recycling Bins
  - Zone 4-Lompoc & Zone 5 Food Waste
- Rate Increase
  - Zone 1 & 3 Cardboard-Only Bins Transitioned to Mixed Recycling Bins

# Isla Vista Rate Restructuring

- The Isla Vista customer collection rate structure has remained the same since July 1, 1999
- Goals
  - Establish new cart rates for multiple-unit dwellings
  - Clarify which rates pertain to single-unit vs. multiple-unit residences
  - Clarify which rates have backyard service included
  - Clarify eligibility for special services

# Staff Recommendations

- ✓ Adopt resolution and fee schedule for County facilities
- ✓ Adopt resolution and parcel fee schedule for Cuyama Valley
- ✓ Adopt resolution and fee schedule for maximum franchised solid waste collection services
- ✓ Direct staff to pursue restructuring of the fee schedule for maximum solid waste collection rates in Isla Vista
- ✓ Find that the proposed actions are exempt from CEQA



# Thank you!



SANTA BARBARA COUNTY

---

*Innovative Environmental Solutions*

[www.LessIsMore.org](http://www.LessIsMore.org)