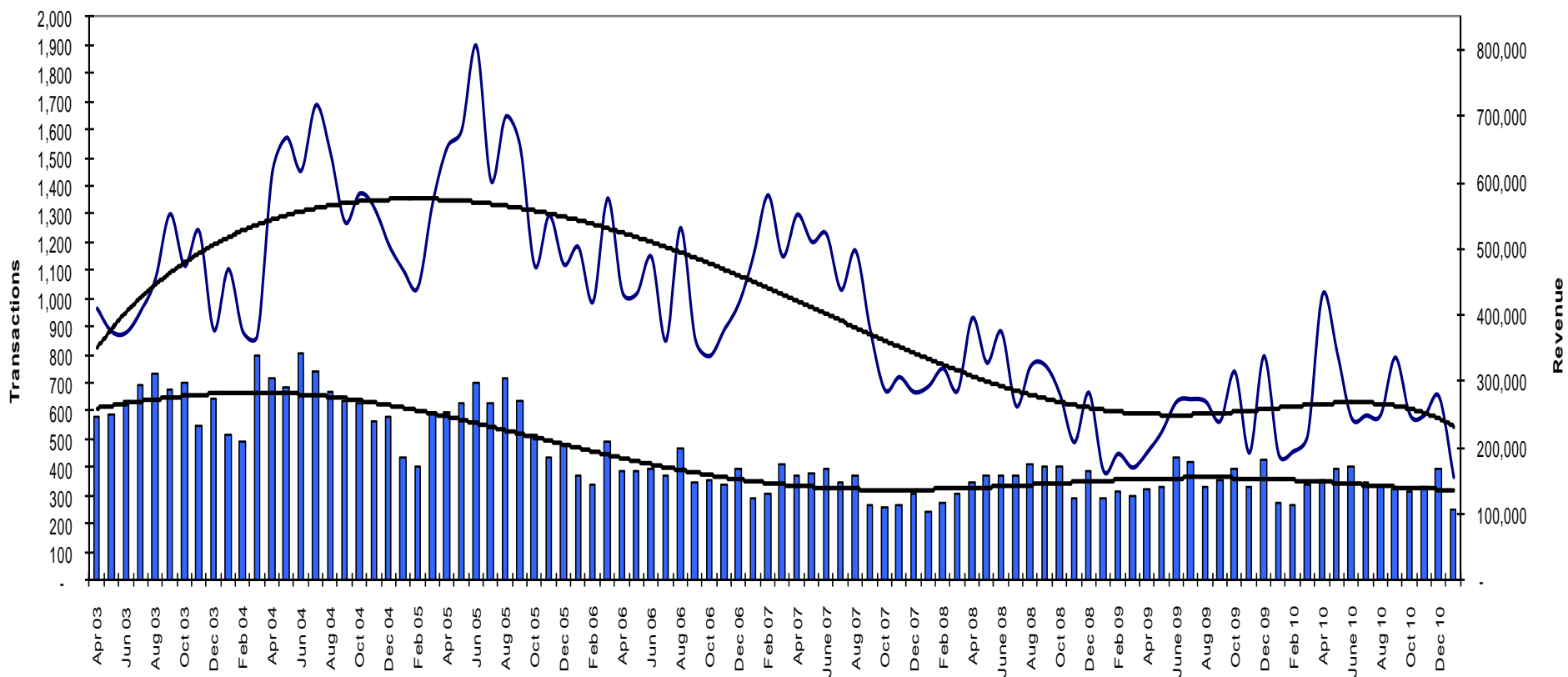




JOSEPH E. HOLLAND
COUNTY CLERK, RECORDER AND ASSESSOR
REGISTRAR OF VOTERS

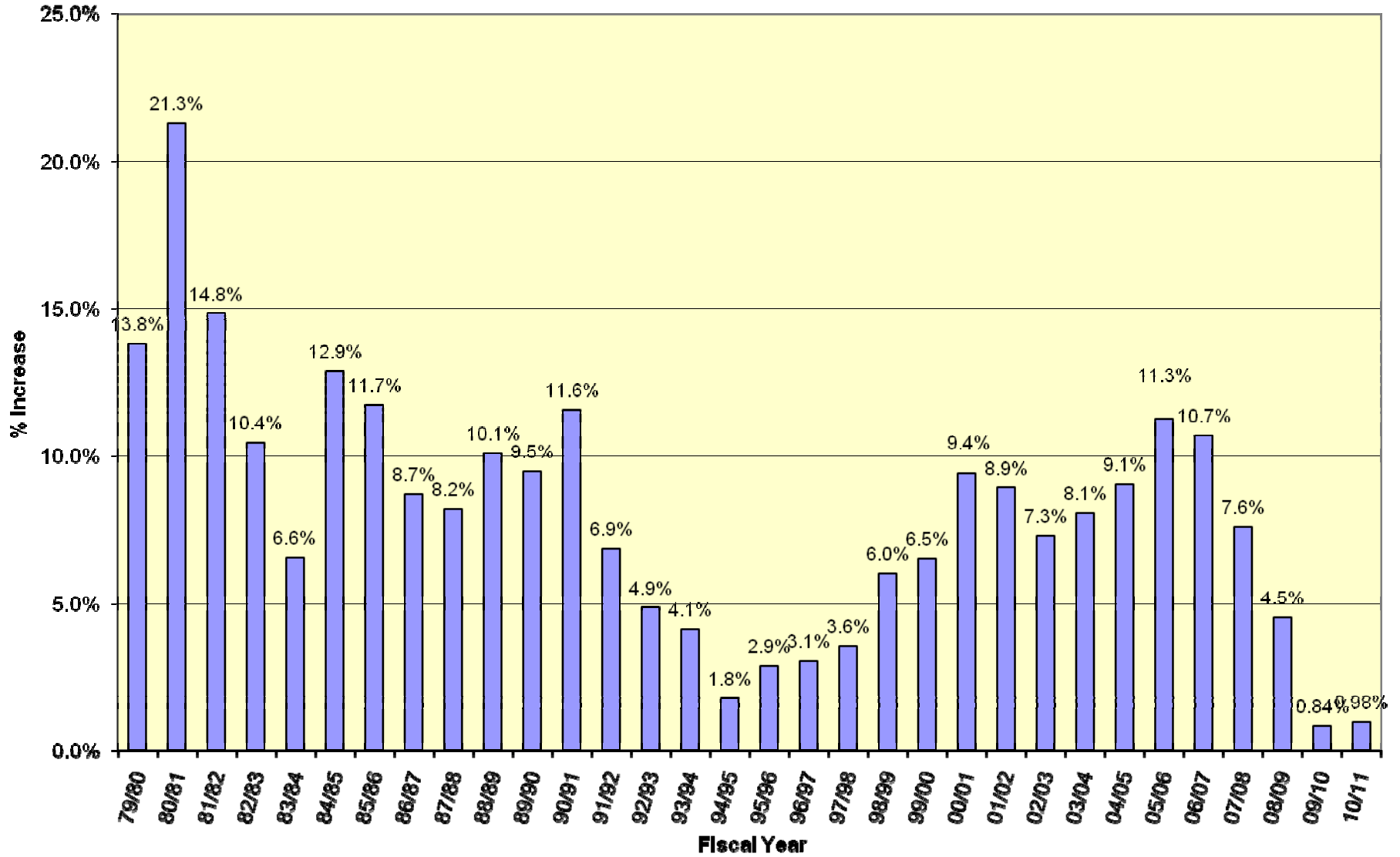
Countywide Documentary Transfer Tax

As of 2-15-11

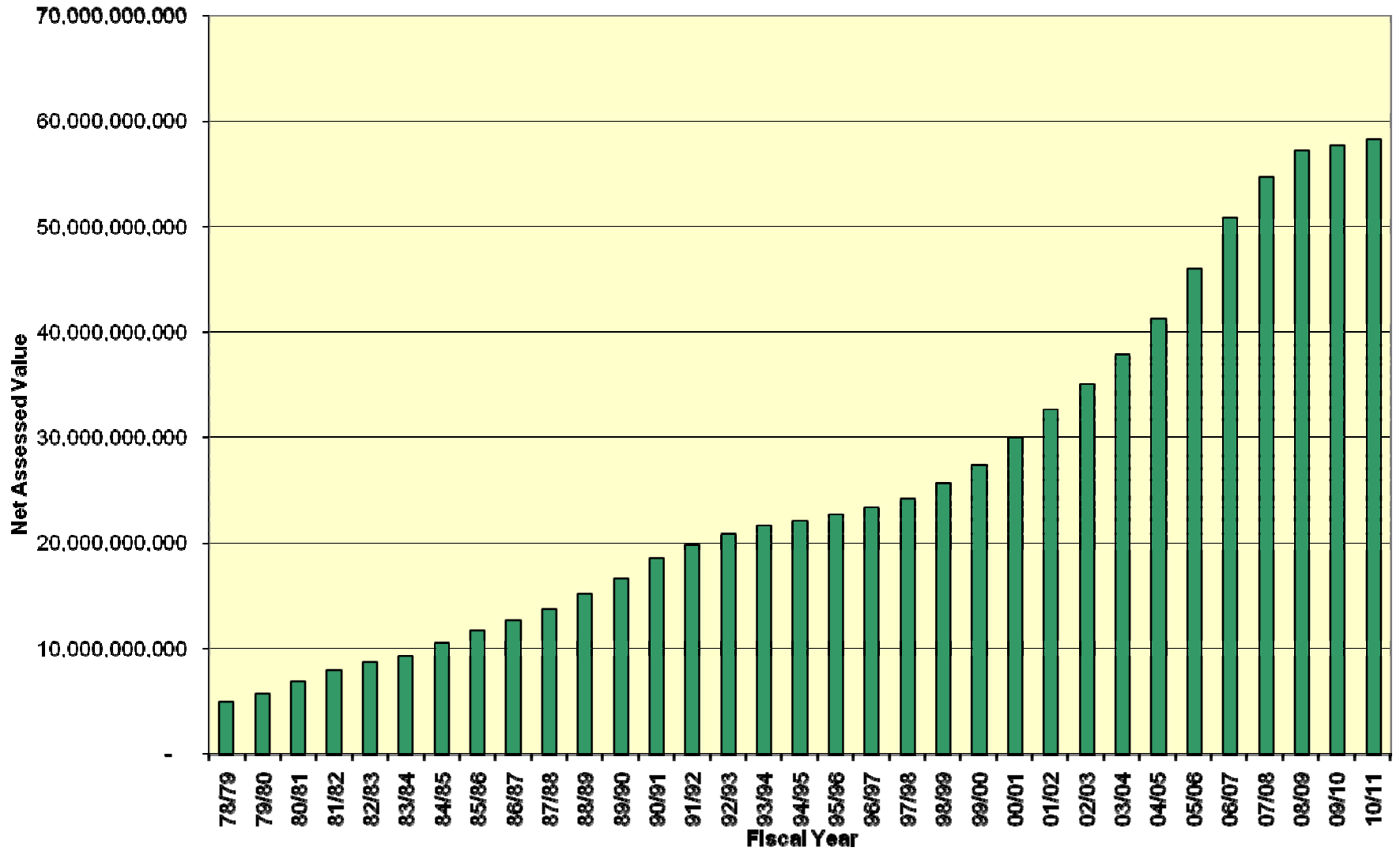


Bars = Number of transactions
Line = Revenue

% Increase In Secured Roll Value 79/80 - 08/09

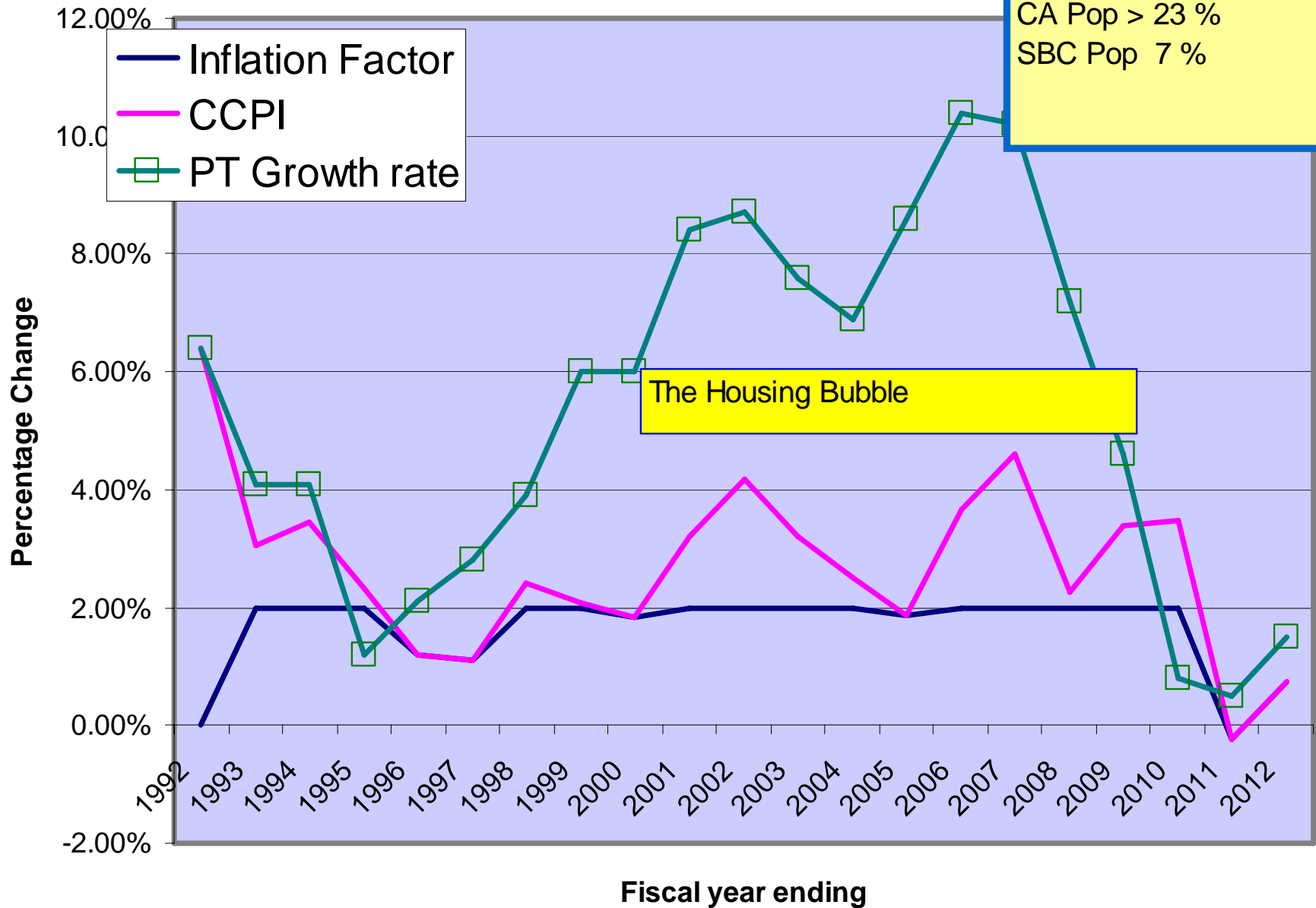


History of Secured Net Roll Value - Santa Barbara County



Inflation Factor vs CCPI vs PT Growth Rates

From 92 to 2012 FY
 SBC PT > 112%
 CA CPI > 56 %
 CA Pop > 23 %
 SBC Pop 7 %



COUNTY'S REVENUE GENERATOR
 Property Tax Revenues as a Percentage of Total Discretionary Revenues

