



Santa Cruz Island Foundation
Chrisman California Islands Center
4994 Carpinteria Ave.
Carpinteria, CA 93013

CRMF Grant Application 2023



THE CALIFORNIA ISLANDS, SAVING THEIR HISTORY, TELLING THEIR STORIES
20 California Islands — 8 California Channel Islands — 1 Chrisman California Islands Center

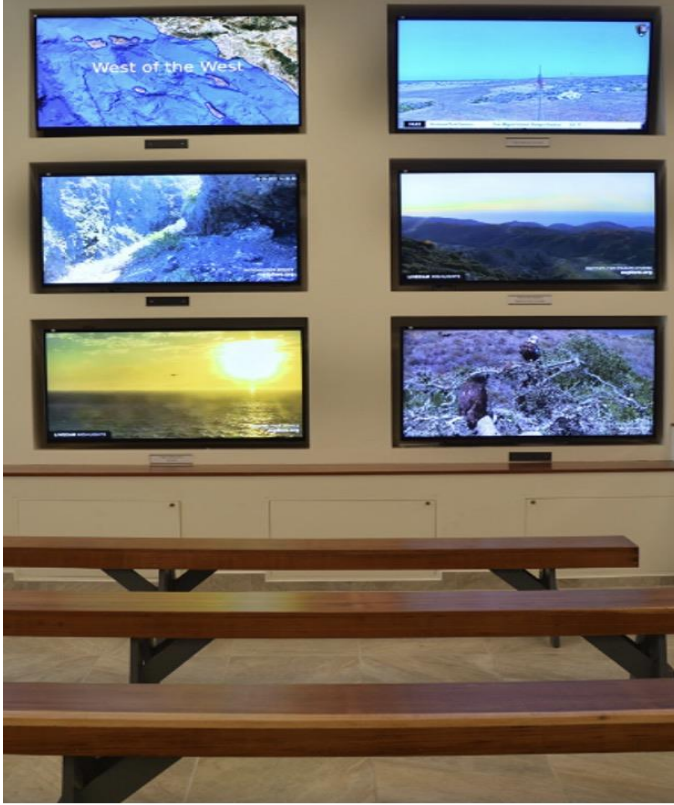
This groundbreaking new project has been made possible by generous gifts totaling over \$5,000,000 from nearly 200 donors. After purchasing the former Bank of America building, debt free, at the gateway to the seaside town of Carpinteria, and four years of extensive renovations, our goal of creating the Chrisman California Islands Center has been achieved. ALMOST.

Part art gallery, part center for scholarship, and part public attraction and educational displays, the CCIC's offerings, combine to meet the needs of anyone who wants to know about the California Islands. The remaining \$1,400,000 need includes raising funds for the final interior upgrades, completion of the exterior Courtyard Gallery by Dec. 1, 2023, and operating resources through 2024.

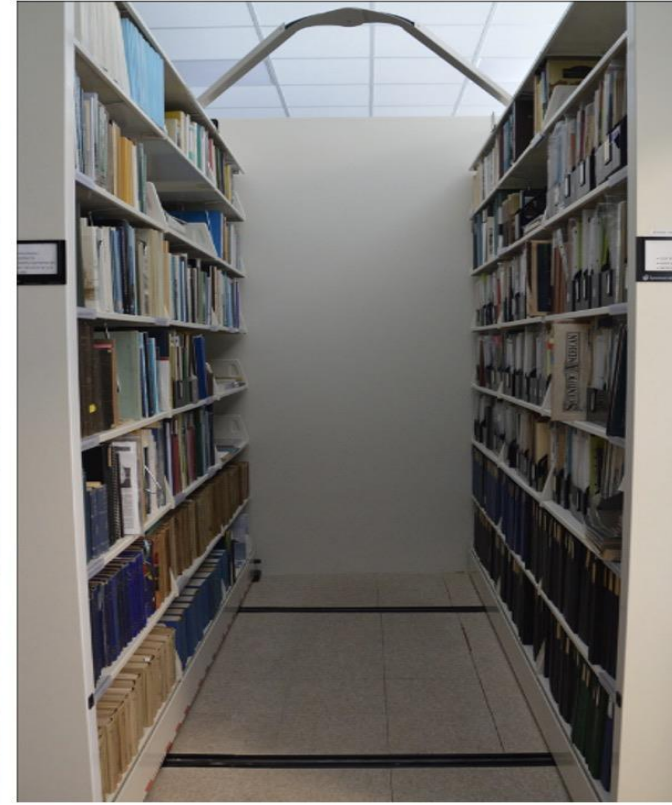


Carpinteria's Cultural Triangle

In Carpinteria, for residents and passersby, the Center is part of the “cultural triangle” created by the Carpinteria Arts Center and Carpinteria Valley Historical Museum, with the Chrisman California Islands Center at the gateway to town as the apex. People from all over the world will be drawn to this unique place where they can learn about multiple facets of the history and culture of the eight Channel Islands—often referred to as The Galapagos of the North—seen off shore by all, from Gaviota to San Diego. We are proud to say that we are 90% finished creating this new and unique cultural resource for and about California’s Islands.



ISLANDS LIVE



CAIRE-CHILES LIBRARY

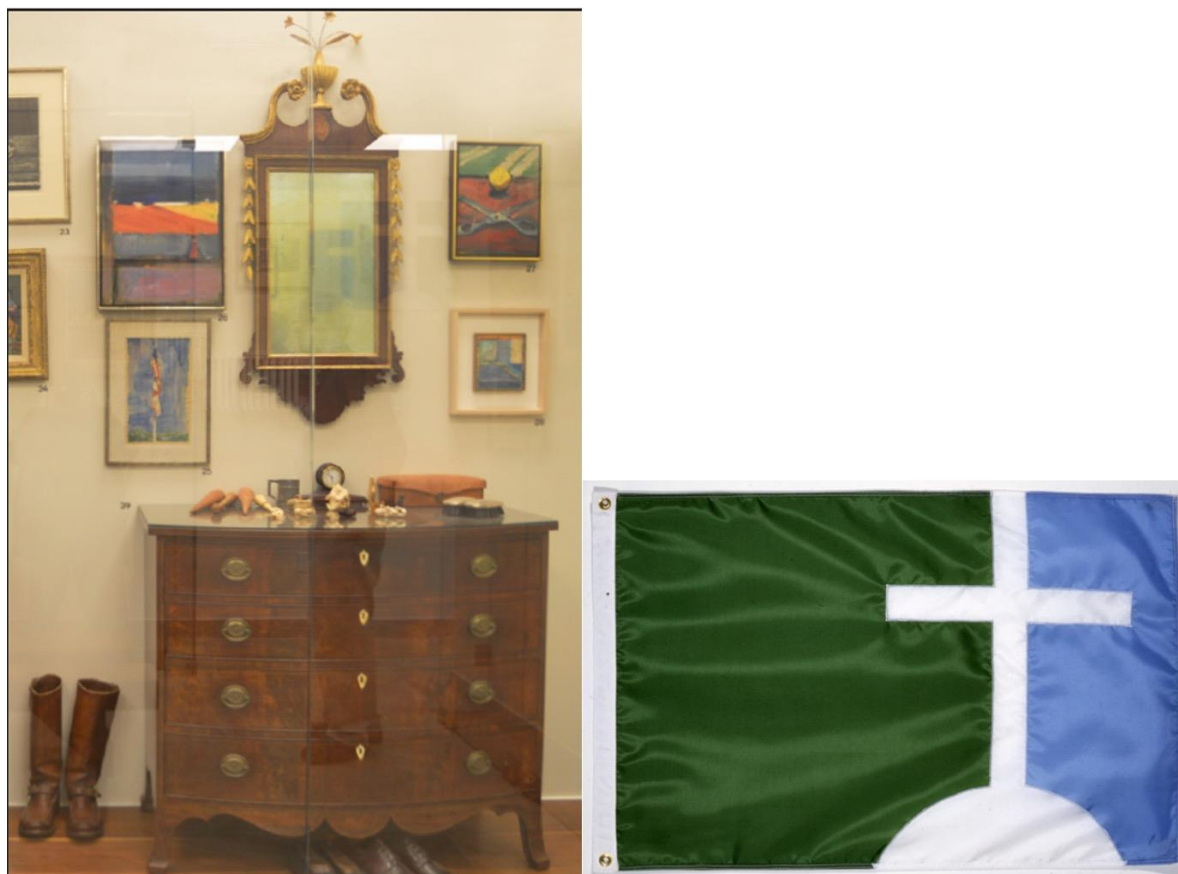
ISLANDS LIVE is a wall of 6 large video monitors broadcasting live via remote cam from 6 islands at all times, and changeable. Live-action views include the wonders of a million murrelets crowding Southeast Farallon with their nests; rotating panoramic views of San Miguel Island; pairs of bald eagles feeding their chicks on Santa Cruz Island; underwater kelp forest activity on Anacapa Island; and even vessel traffic in Avalon Harbor, Santa Catalina Island. A student/teacher viewing area features tales from our 3-hour PBS Channel Islands film, *WEST OF THE WEST*.

CAIRE-CHILES LIBRARY is a set of state-of-the-art archival stacks containing tens of thousands of documents, books, maps, manuscripts, photographs, journals and ship's logs that comprise the historical record of the California Islands, curated by a professional archivist.



JUANA MARIA, LONE WOMAN OF SAN NICOLAS ISLAND

A large diorama, by artist Holli Harmon, depicting JUANA MARIA, THE LONE WOMAN OF SAN NICOLAS ISLAND, in her island habitat, is accompanied by her original donut stone, with exacting provenance from her hands in 1853 to the CCIC today.



RICHARD DIEBENKORN GALLERY

A permanent art gallery is dedicated to works by noted American painter RICHARD DIEBENKORN (1922-1993). The gallery contains a never-before-seen collection of works by this famous master, acquired by his best friend, Carey Stanton (1923-1987). Thirty-three works are on permanent display, most painted on Santa Cruz Island. They span from 1943 to 1984. Also on display is the Santa Cruz Island flag, designed by Diebenkorn in 1948. A white cross on an island represents this Island of the Holy Cross, flanked by the blue of the sky and Pacific waters, and green pastures.



**Top Row: Santa Catalina Island Porcelain Souvenirs date to 1900.
Santa Catalina Island Pottery dates between 1927-1937.**

**This is the only permanent public display of
Catalina Clay Products in the world.**



INVITATIONAL ROTATING EXHIBIT — is a display case dedicated to independently curated Island-related exhibits.



Octopus's Garden sponsored by Ringo Starr



Juana Maria



Justinian Caire

THE COURTYARD GALLERY under construction is an inviting outdoor art walk through islands-related sculptures, monuments, and artwork, including: 2 life-sized bronze statues (Juana Maria and Justinian Caire); Catalina tile murals; an Octopus's Garden; a propeller monument to the 34 victims of the *Conception* fire at Santa Cruz Island in 2019; and a monument to the 12 victims of the B-24 Liberator crash on San Miguel Island in 1943. All are set among eight Corten steel island-shaped benches sized and spaced proportionately to the geographic location of the 8 Channel Islands.

CHRISMAN CALIFORNIA ISLANDS CENTER

Opening to the public in 2024, the Chrisman California Islands Center will immediately become the equivalent of the Huntington Library of all-things-California-Islands spanning from the Farallones off San Francisco south to Baja California's Cedros Island, with the magnificent 168-mile Channel Islands archipelago in between. Twenty islands in all.

