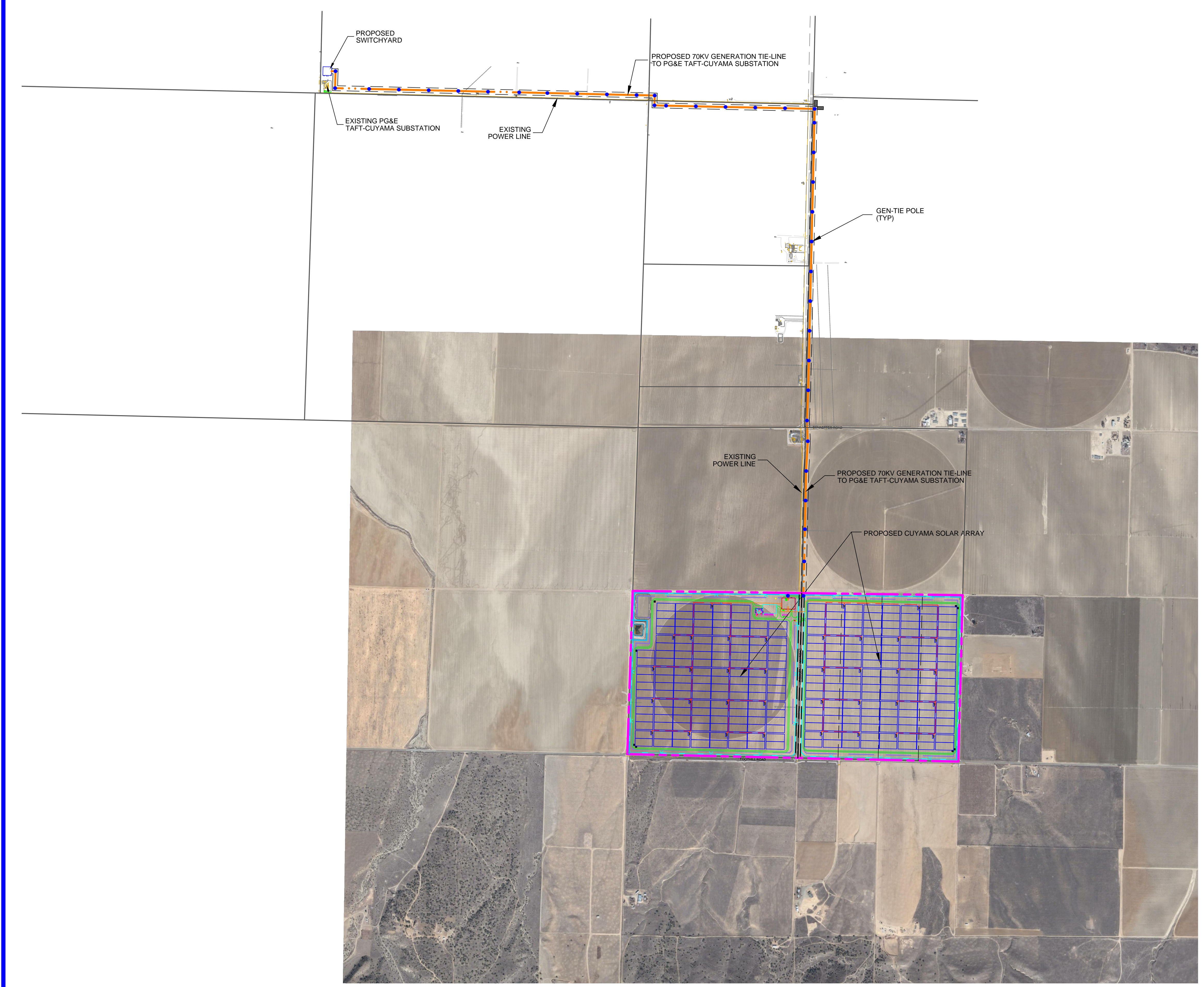


C:\Cuyama\CUP\C-107 PV-42 - T.dwg FS104849 Nov 12, 2013 - 5:54pm



LEGEND

	BOUNDARY
	RIGHT OF WAY DEDICATION
	SOLAR ARRAY SETBACK
	FENCE LINE
	EASEMENT
	70KV GENERATION TIE-LINE

CUYAMA SOLAR, LLC
 135 MAIN STREET, 6TH FLOOR
 SAN FRANCISCO, CALIFORNIA 94105
 PHONE: (415) 935-2500

PROFESSIONAL ENGR.

**CUYAMA
 PHOTOVOLTAIC SOLAR PLANT
 SANTA BARBARA COUNTY
 CALIFORNIA
 40 MWac**

REV	DATE	REVISION DESCRIPTION	BY	CHK	APP
7	11/12/13	UPDATE CUP			
6	11/8/13	UPDATE CUP			
5	11/11/13	UPDATE CUP			
4	8/30/13	UPDATE CUP			
3	8/27/13	UPDATE CUP			
2	7/11/13	UPDATE CUP			
1	4/24/13	SUBSTATION AND GEN-TIE LAYOUT			

FS JOB #: 6023-0105-23
 PROJ. DSGR: AB
 PROJ. ENGR:
 PROJ. MGR: K. KEMP
 PROJ. DIR: A. PERRINO
 SCALE: AS SHOWN

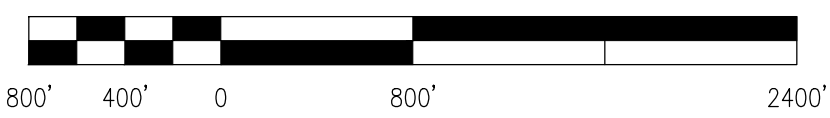
**PRELIMINARY
 GENERATION
 TIE-LINE PLAN
 (11/12/13)**

C-107



Preliminary Generation Tie-line Plan

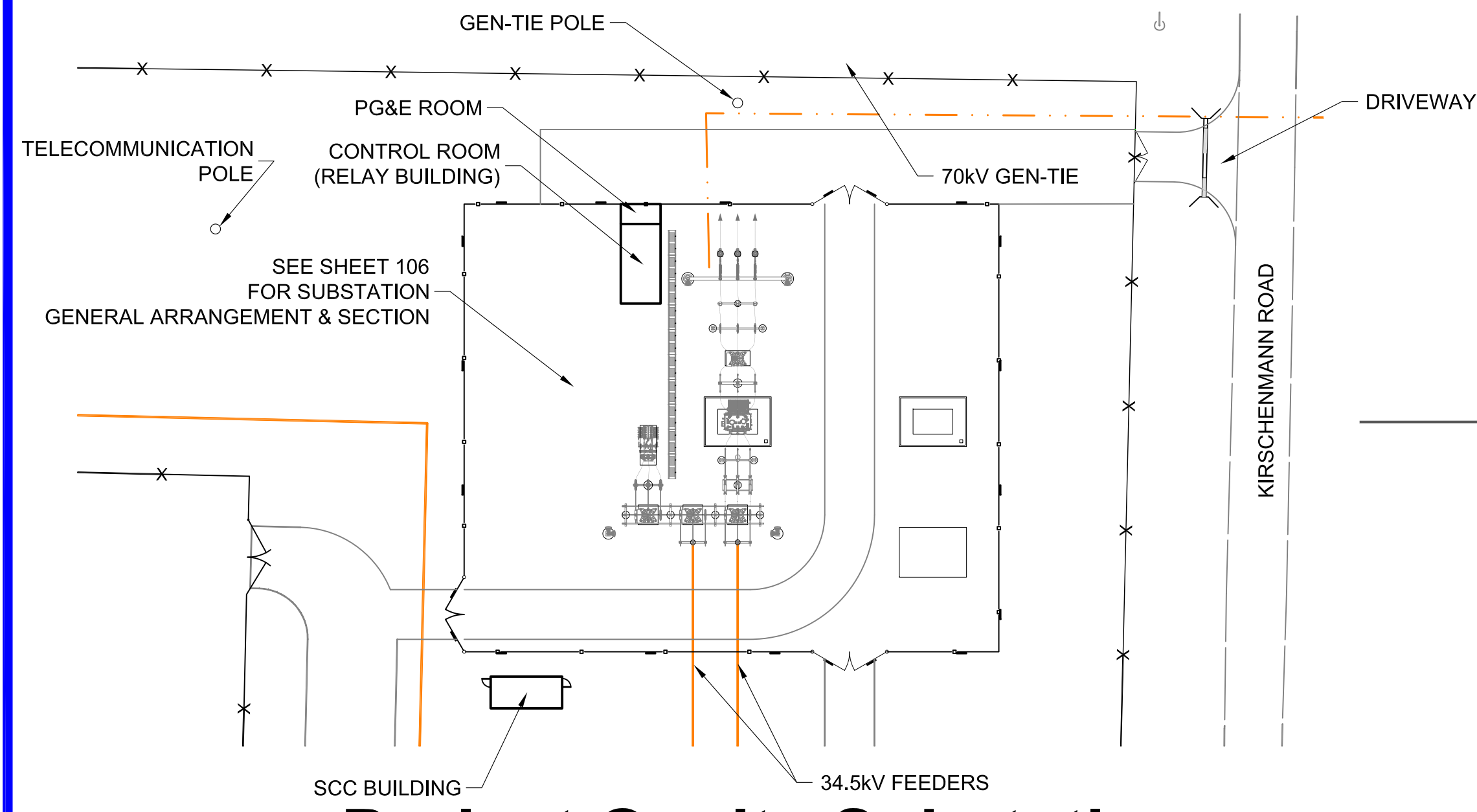
Scale 1" = 800'



THIS PUBLICATION CONTAINS VALUABLE PROPRIETARY AND CONFIDENTIAL INFORMATION OF FIRST SOLAR, INC. ("FIRST SOLAR") WHO RETAINS ALL COPYRIGHT RIGHTS TO IT UNDER 17 U.S.C. SECTION 106 AND IS PROTECTED BY U.S. AND INTERNATIONAL LAW. ANY REPRODUCTION, PREPARATION OF DERIVATIVE WORKS, DISTRIBUTION, PUBLIC PERFORMANCE OR DISPLAY, DISCLOSURE, AND/OR USE OF ALL OR ANY PORTION, OF THIS PUBLICATION IN ANY FORM OR MEDIUM WITHOUT SPECIFIC WRITTEN AUTHORIZATION FROM FIRST SOLAR IS STRICTLY PROHIBITED.

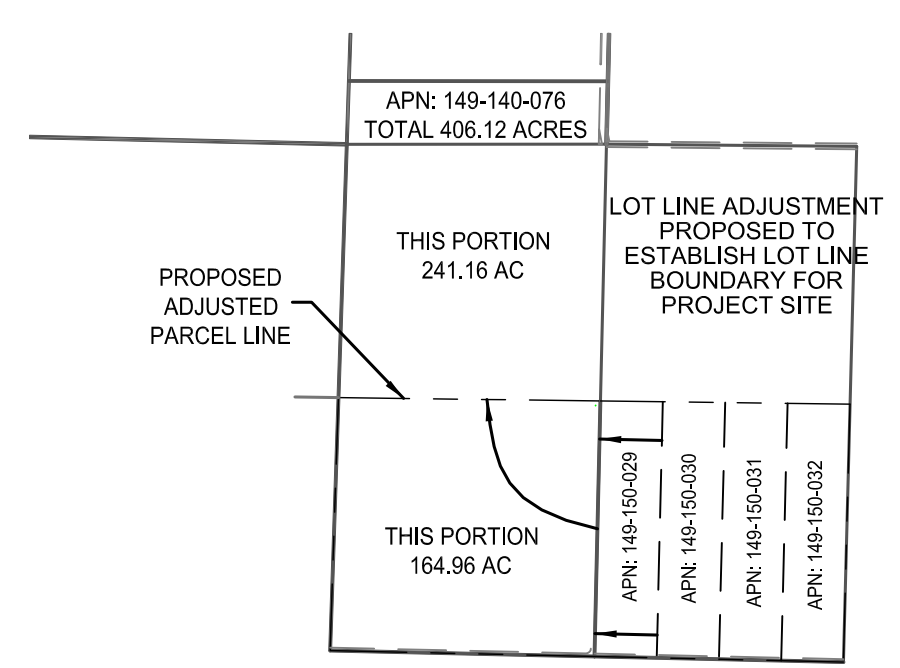
THIS PRINT IS NOT TO BE USED FOR CONSTRUCTION UNLESS NOTED AND SIGNED OK FOR CONSTRUCTION ABOVE LAST REVISION.

T:\Application\Engineering\Projects\2010\6023-0105-23 Cuyama (PV 42)\FS Drawings\02 Entitlements\Active Drawing Files\Trackers\C-100 PV-42 - T.dwg FS104849 Nov 12, 2013 - 6:11pm



Project Onsite Substation

Not to Scale



LLA Detail

Not to Scale

Cuyama Solar Array
Cuyama, Santa Barbara County, California

Project Applicant:
Cuyama Solar, LLC.

Project Design-Builder:
First Solar, Inc.

Project Site Description:
Latitude 34° 54' 05" N
Longitude 119° 35' 44" W
Elevation 2410 - 2500 ft.

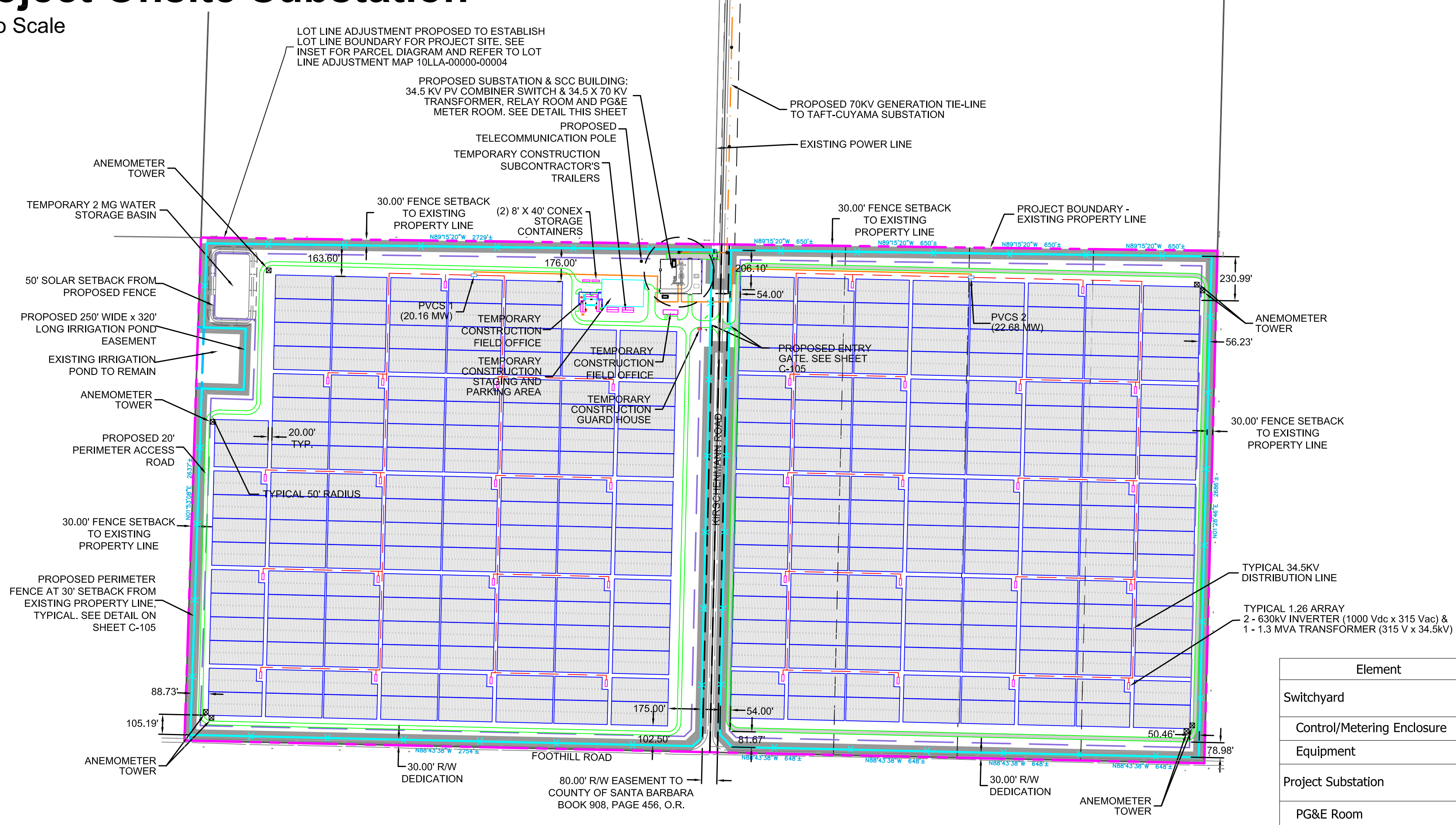
Project Climatic Conditions:
Cuyama, CA
Extreme Max (50 year) Temp 113 °F
Extreme Min (50 year) Temp 27 °F
Annual Cooling Design Temp 104 °F
Annual Heating Design Temp 11 °F
(ASHRAE 2009)

Project Design Data:
Snow Load 0 PSF
Wind Load 85 MPH, Exposure C
Seismic Load Ss=1.50g, S1=0.69g

Project Interconnection:
70 kV Generation Tie-Line from Taft-Cuyama Substation

Photovoltaic (PV) System Parameters:
40.00 MW-ac Nameplate Capacity (Nominal Output)

Solar PV Production:
TRACKER Mounting System
1°20'12" SW Azimuth
1000 V dc PV System Design
34.5 kV Distribution System
70 kV Generation Tie-Line



LEGEND

- BOUNDARY
- RIGHT OF WAY DEDICATION
- SOLAR ARRAY SETBACK
- X FENCE LINE
- AC ELEC (UNDERGROUND)
- AC ELEC (ABOVE GROUND)
- EASEMENT
- 70KV GENERATION TIE-LINE
- 20' DIRT ACCESS ROAD
- EXISTING POWER POLE
- PROJECT AREA



Preliminary Site Plan

Scale 1" = 400'

Element	Temporary (sf)	Permanent (sf)	Comment
Switchyard			Fenced area is 19,600 sf (140'x140'), much of which will be graveled and compacted.
Control/Metering Enclosure		225	15'x15'
Equipment		400	Concrete footing
Project Substation			Fenced area is 38,700 sf (180'x215'), much of which will be graveled and compacted.
PG&E Room		128	8'x16'
Control Room (Relay Building)		512	32'x16'
Transformer Foundation		1,620	20'x27" (3 Total Pads - 1 Main & 2 Spares)
SCC Building		364	28'-8"x12'-8"
Telecommunication Poles (2)		51	
Pulling Areas (2)	10,000		
Site			Fenced Area is 307.4 acres
Temp. Const. Trailers	9,072		
Conex Storage Boxes		640	
PCS Enclosures (34)		14,280	
Anemometer Towers (8)		162	
PVCS (2)		900	
PG&E - Taft-Cuyama Substation			
Battery Building		460	15'-4"x30'
Telecommunication Pole		100	PG&E 10'x10' Pad
Total	19,072	19,842	

PROFESSIONAL ENGR.

CUYAMA
PHOTOVOLTAIC SOLAR PLANT
SANTA BARBARA COUNTY
CALIFORNIA
40 MWac

REV	DATE	REVISION DESCRIPTION	BY	CHK	APP
7	11/12/13	UPDATE CUP			
6	11/01/13	UPDATE CUP			
5	11/11/13	UPDATE CUP			
4	9/30/13	UPDATE CUP			
3	8/27/13	UPDATE CUP			
2	7/11/13	UPDATE CUP			
1	4/24/13	SUBSTATION AND GEN-TIE LAYOUT			

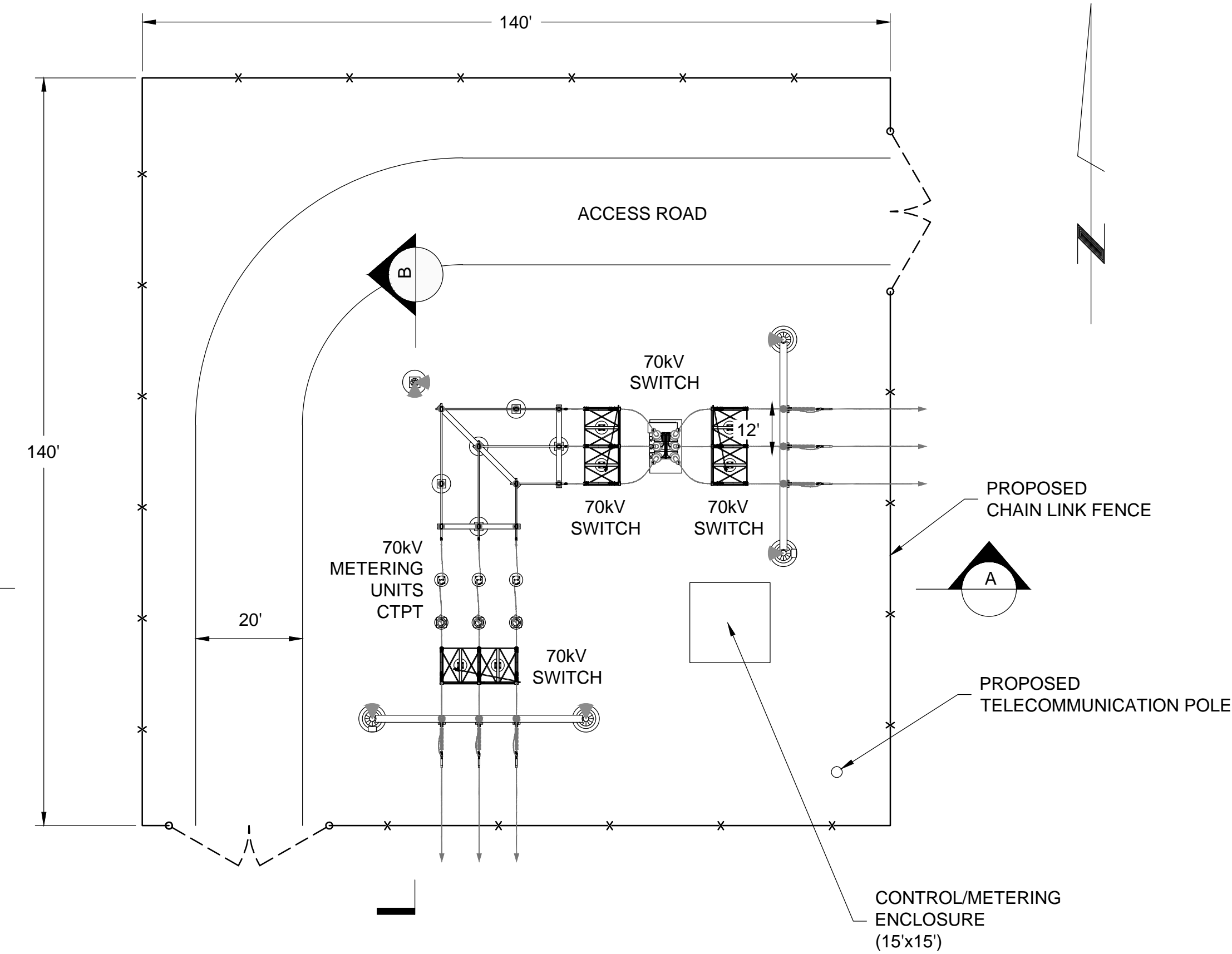
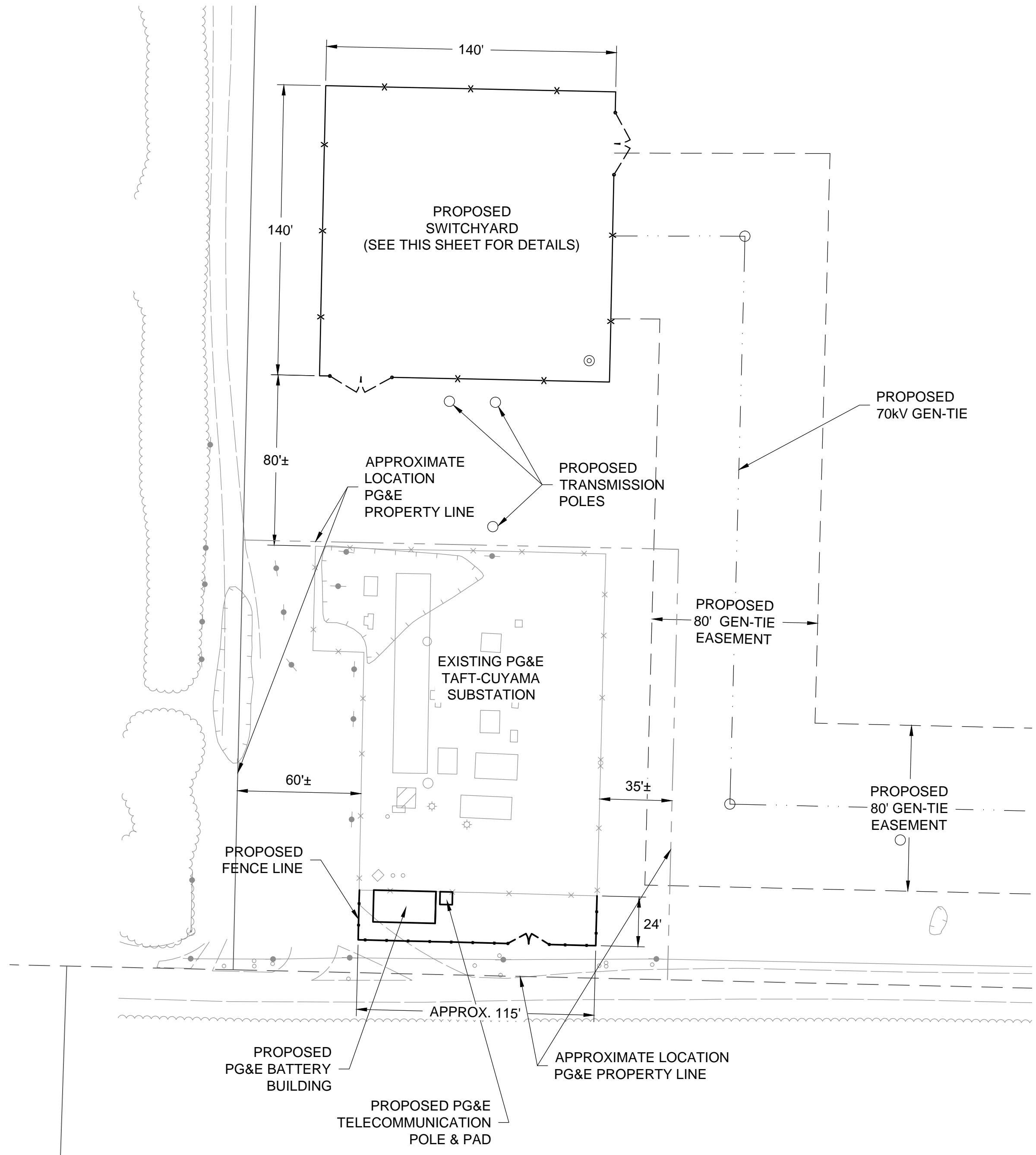
FS JOB #: 6023-0105-23
PROJ. DSGR: AB
PROJ. ENGR:
PROJ. MGR: K. KEMP
PROJ. DIR: A. PERRINO
SCALE: AS SHOWN

PRELIMINARY SITE PLAN (11/12/13)

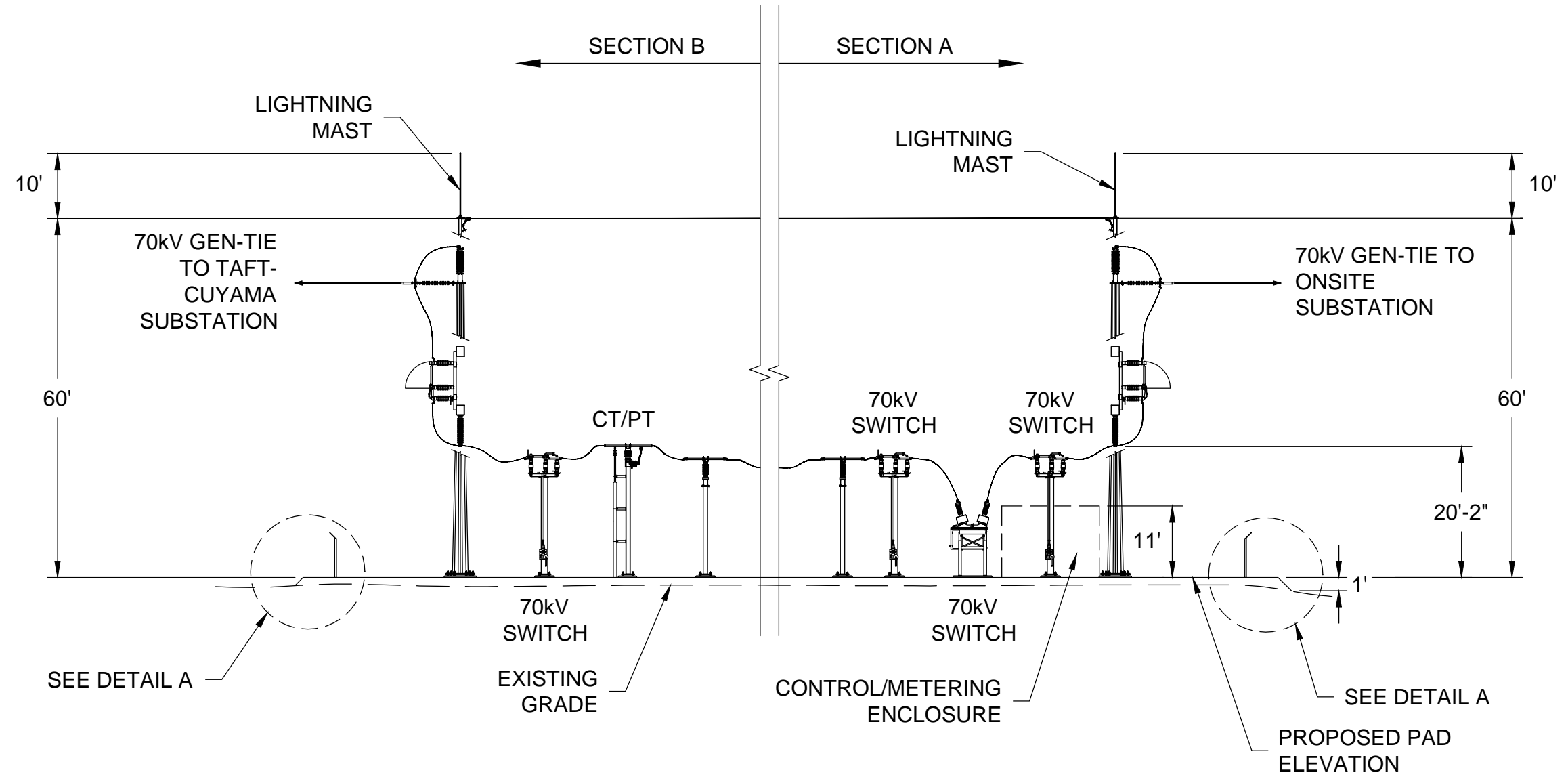
C-100

THIS PRINT IS NOT TO BE USED FOR CONSTRUCTION UNLESS NOTED AND SIGNED OK FOR CONSTRUCTION ABOVE LAST REVISION.

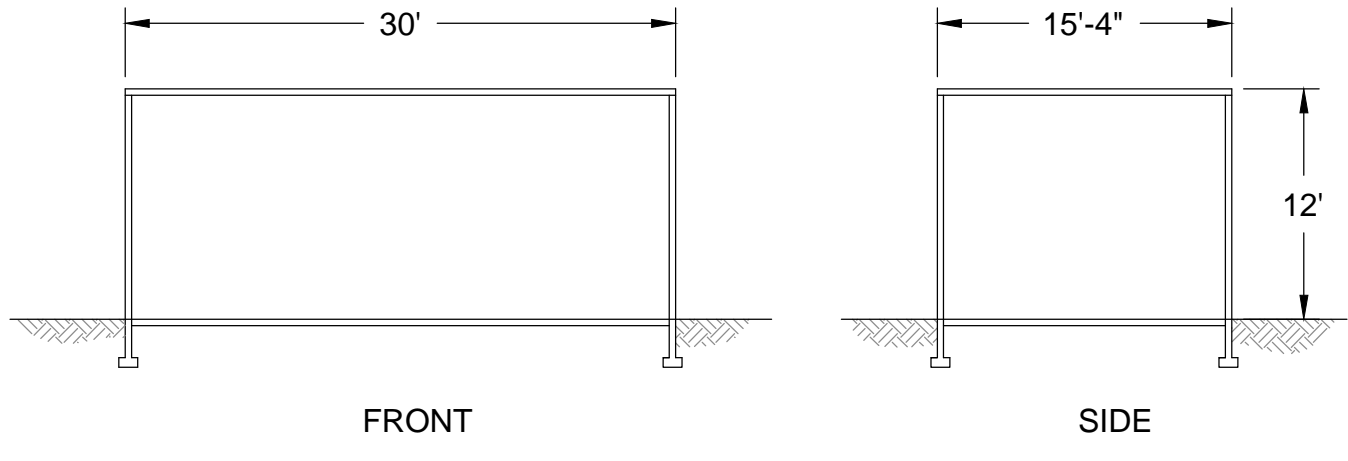
SWITCHYARD	
EARTHWORK	1,500 CY (CUT/FILL)
IMPORT (AGGREGATE BASE)	800 CY (FILL)
SUB-TOTAL	2,300 CY
PG&E CUYAMA SUBSTATION	
EARTHWORK	100 CY (CUT/FILL)
IMPORT (AGGREGATE BASE)	20 CY (FILL)
SUB-TOTAL	120 CY
TOTAL	2,420 CY



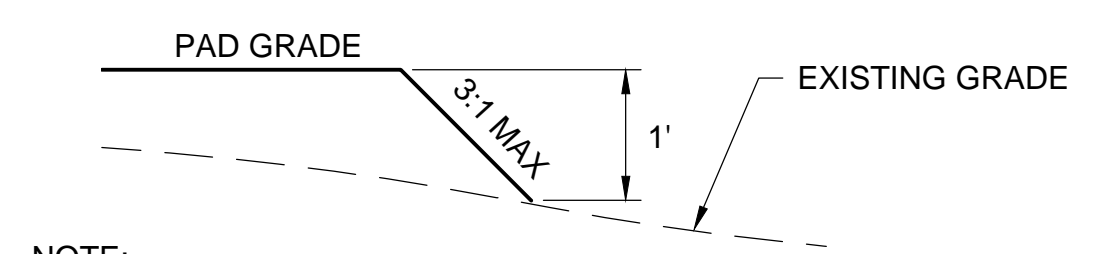
1 SWITCHYARD PLAN
Scale: NTS



2 SWITCHYARD PROFILE
NTS



PG&E BATTERY BUILDING



NOTE:
SWITCHYARD PAD SHALL BE INSTALLED
PER GEOTECHNICAL RECOMMENDATIONS.

A SWITCHYARD PAD DETAIL
NTS

CUYAMA SOLAR, LLC
135 MAIN STREET, 6TH FLOOR
SAN FRANCISCO, CALIFORNIA 94105
PHONE: (415) 935-2500

CUYAMA
PHOTOVOLTAIC SOLAR PLANT
SANTA BARBARA COUNTY
CALIFORNIA
40 MWac

REV	DATE	DESCRIPTION	BY	CHK
6	11/08/13	UPDATE CUP		
5	11/11/13	UPDATE CUP		
4	09/01/13	UPDATE CUP		
3	02/27/13	UPDATE CUP		
2	7/11/13	UPDATE CUP		
1	4/24/13	SUBSTATION AND GEN-TIE LAYOUT		

FS JOB #:	6023-0105-23
PROJ. DSCR:	
PROJ. ENGR:	R. HOLBROOK
PROJ. MGR:	K. KEMP
PROJ. DIR:	A. PERRINO
SCALE:	AS SHOWN
SHEET TITLE	

PRELIMINARY
SWITCHYARD
PLAN & PROFILE
(11/08/13)

C-116

THIS PRINT IS NOT TO BE USED FOR CONSTRUCTION UNLESS NOTED AND SIGNED OK FOR CONSTRUCTION ABOVE LAST REVISION.

C:\Cuyama\CUP\C-116 PV-42 - T.dwg FS104849 Nov 08, 2013 - 1:57pm

THIS PUBLICATION CONTAINS VALUABLE PROPRIETARY AND CONFIDENTIAL INFORMATION OF FIRST SOLAR, INC. ("FIRST SOLAR") WHO RETAINS ALL COPYRIGHT RIGHTS TO IT UNDER 17 U.S.C. SECTION 106 AND IS PROTECTED BY U.S. AND INTERNATIONAL LAW. ANY REPRODUCTION, PREPARATION OF DERIVATIVE WORKS, DISTRIBUTION, PUBLIC PERFORMANCE OR DISPLAY, DISCLOSURE, AND/OR USE OF ALL OR ANY PORTION OF THIS PUBLICATION IN ANY FORM OR MEDIUM WITHOUT SPECIFIC WRITTEN AUTHORIZATION FROM FIRST SOLAR IS STRICTLY PROHIBITED.