



Children's Health Initiative
of Santa Barbara County

CHISB Evaluation
Year Ending 2008

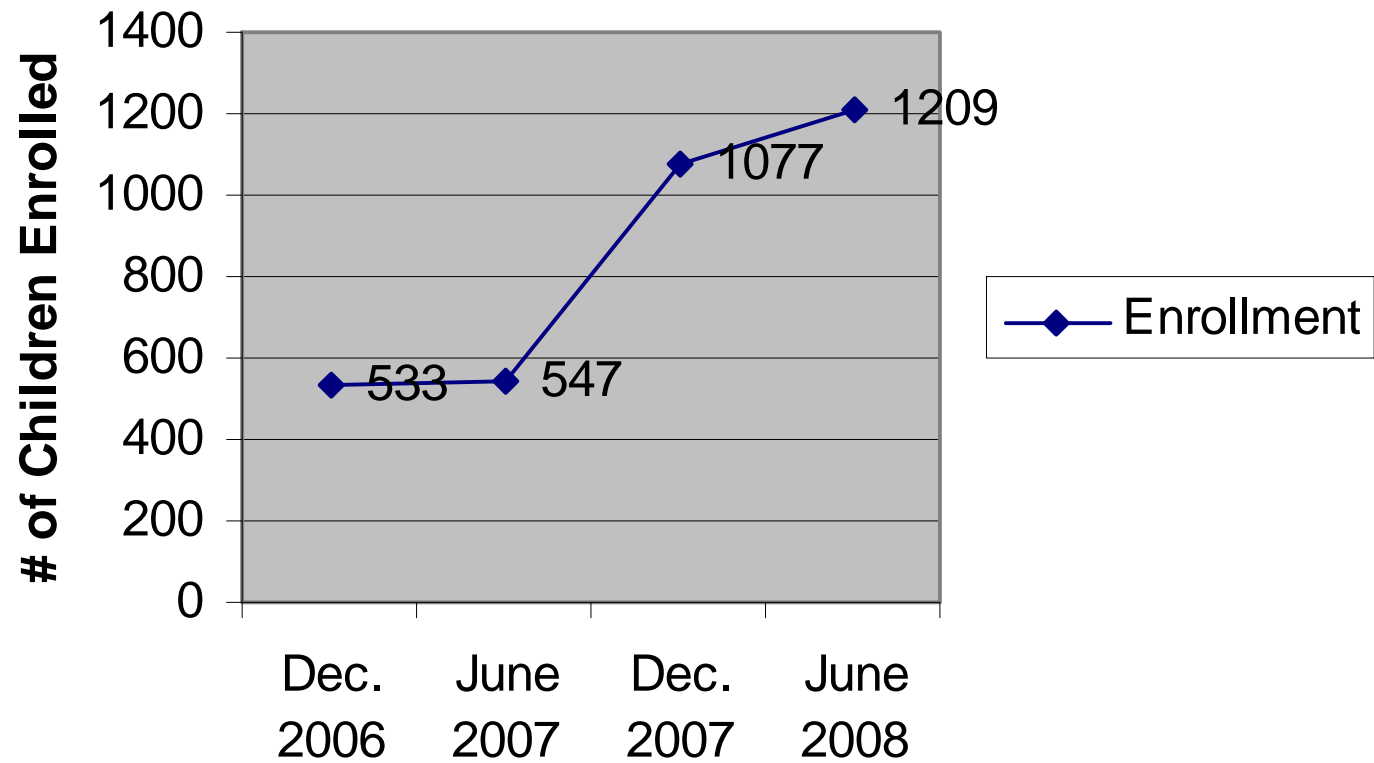




Children's Health Initiative
Santa Barbara

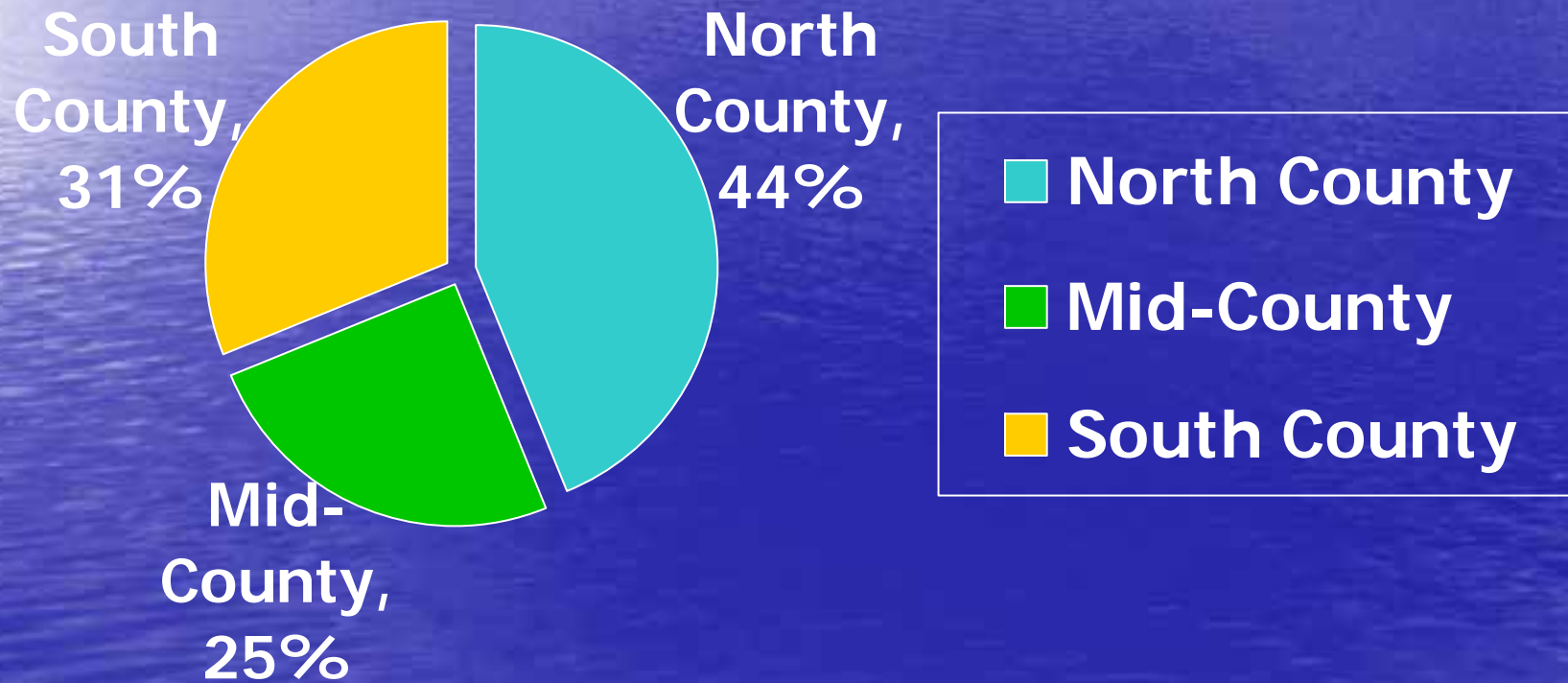


Healthy Kids Enrollment



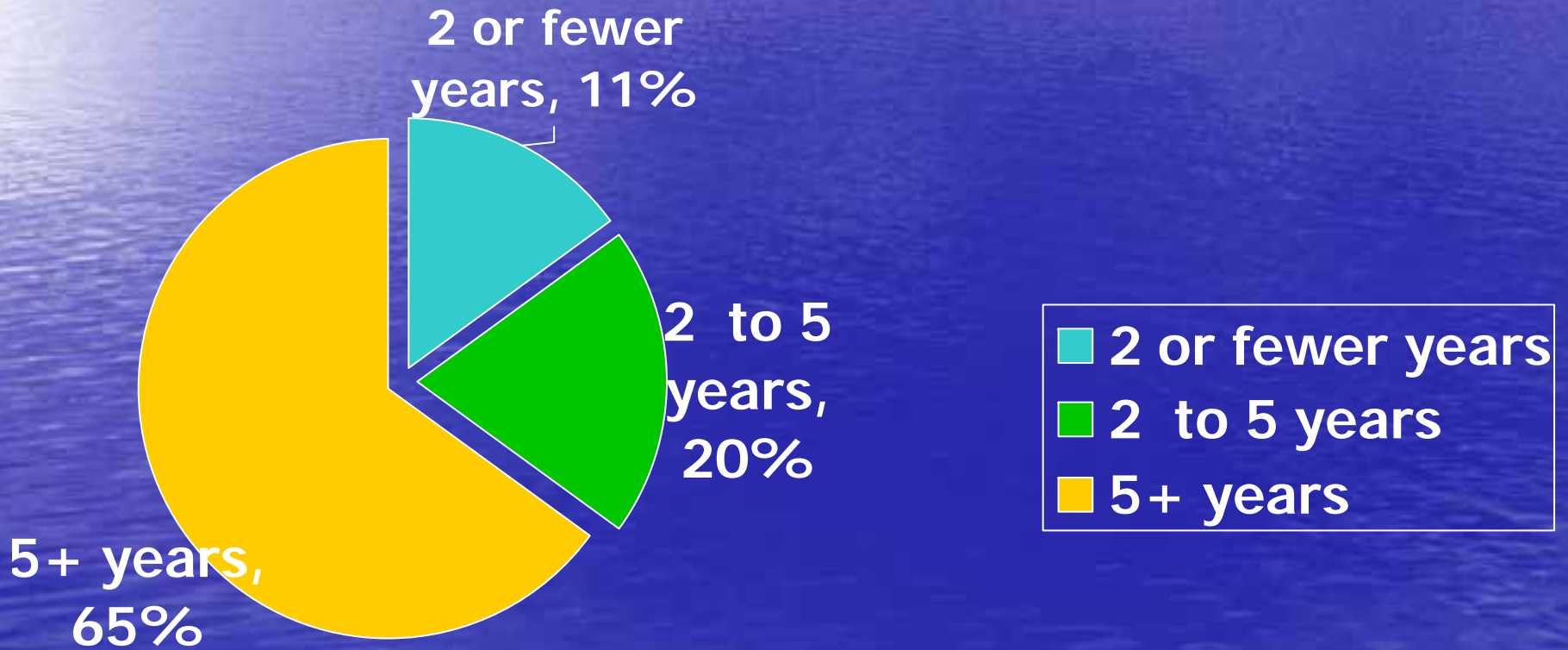


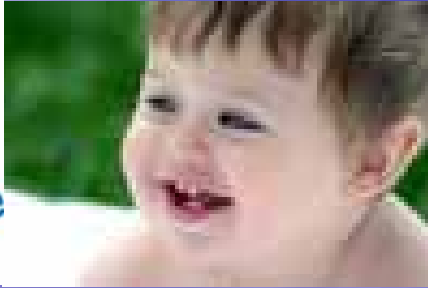
Geographic distribution of Healthy Kids



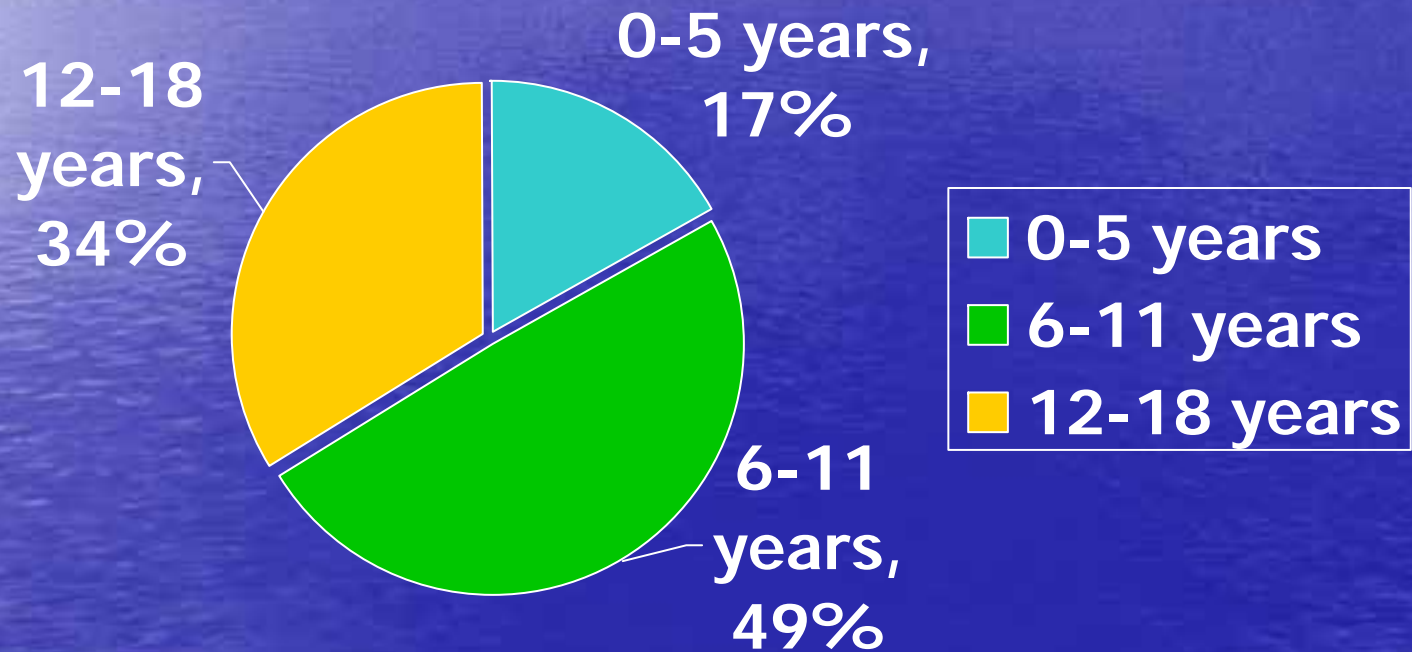


Duration of residence in County of Healthy Kids families





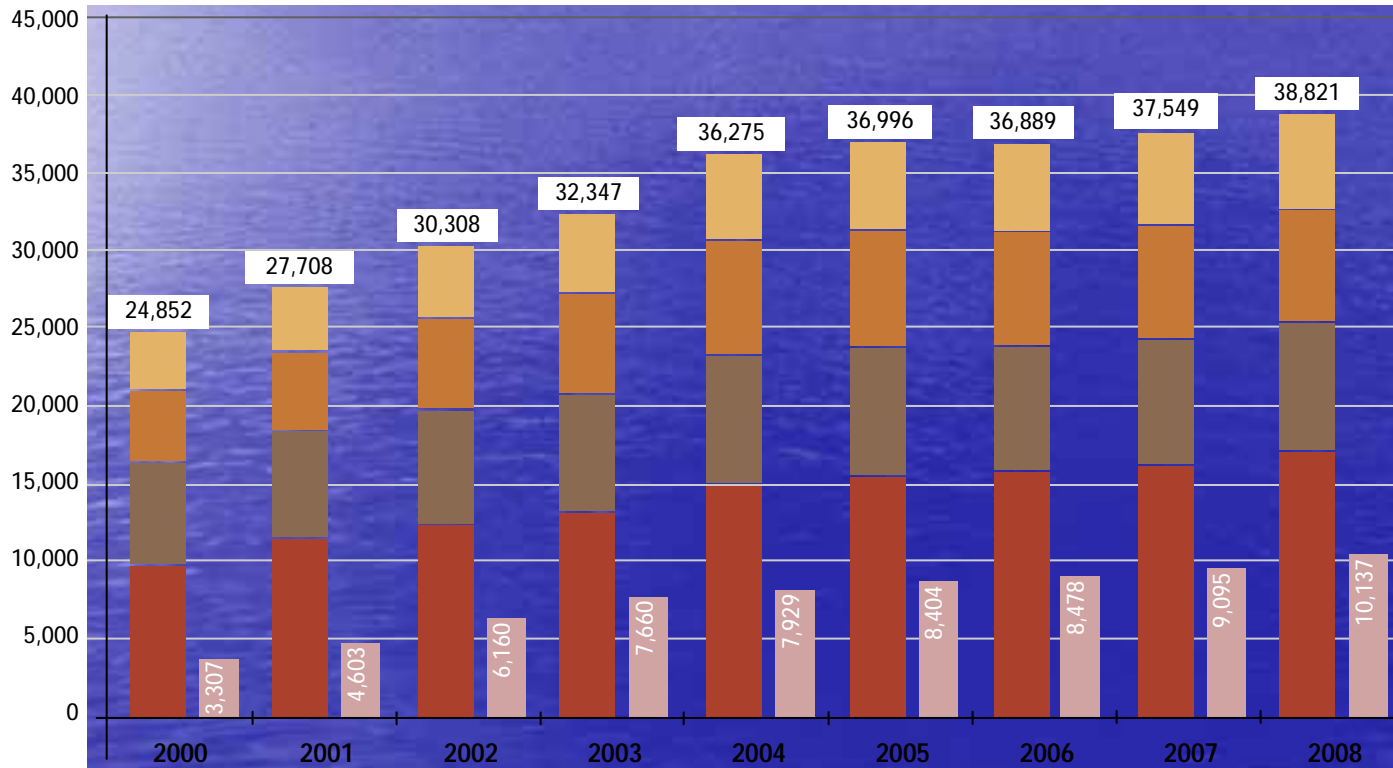
Age distribution of Healthy Kids





Children on Public Insurance in Santa Barbara County

Source (Medi-Cal): California Department of Health Care Services, <http://www.dhcs.ca.gov/dataandstats/statistics/Pages/MediCalBeneficiaryProfilesbyCounty.aspx>
 Source (Healthy Families): Managed Risk Medical Insurance Board, <http://www.mrmib.ca.gov/MRMIB/HFPRReports.shtml>



Key

Medi-Cal:

- Age 16-20
- Age 11-15
- Age 6-10
- Age 0-5

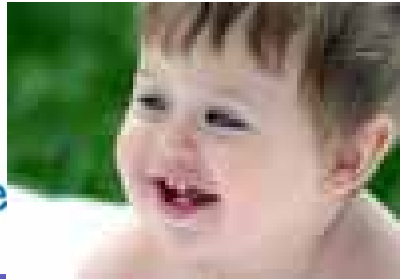
Healthy Families:

- Ages 0-18

Note

Data for Medi-Cal and Healthy Families is point-in-time enrollment as of April of each year.

Chart by Dennis Tivey,
d.tivey@sbcsocialserv.org

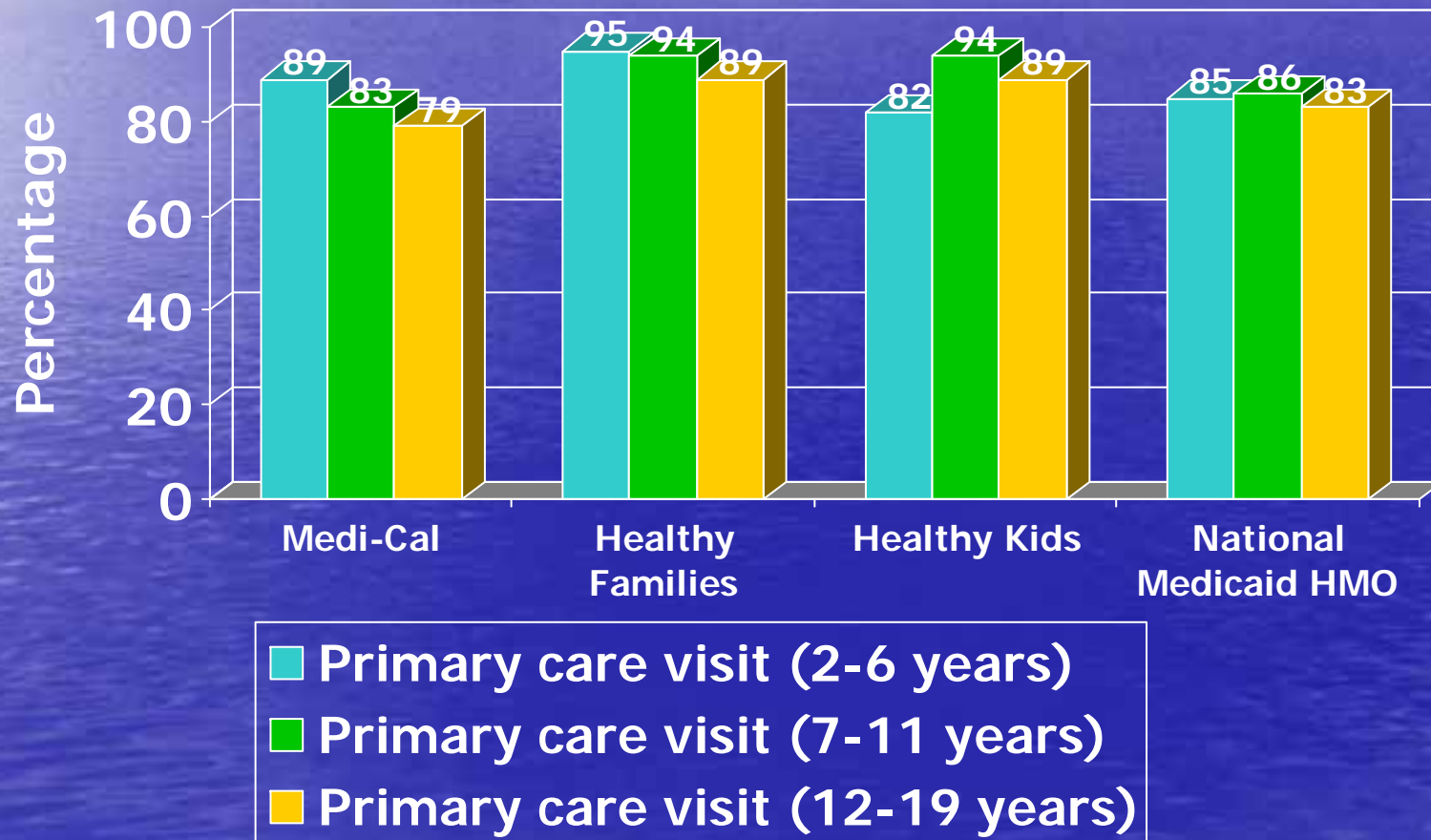


Utilization of Health Plans – 2007

Utilization data were obtained from CenCal Health using HEDIS methodology. HEDIS (Healthcare Effectiveness Data and Information Set) is a product of the National Committee for Quality Assurance (NCQA), and is a tool used by more than 90 percent of America's health plans to measure performance on important dimensions of care and service.

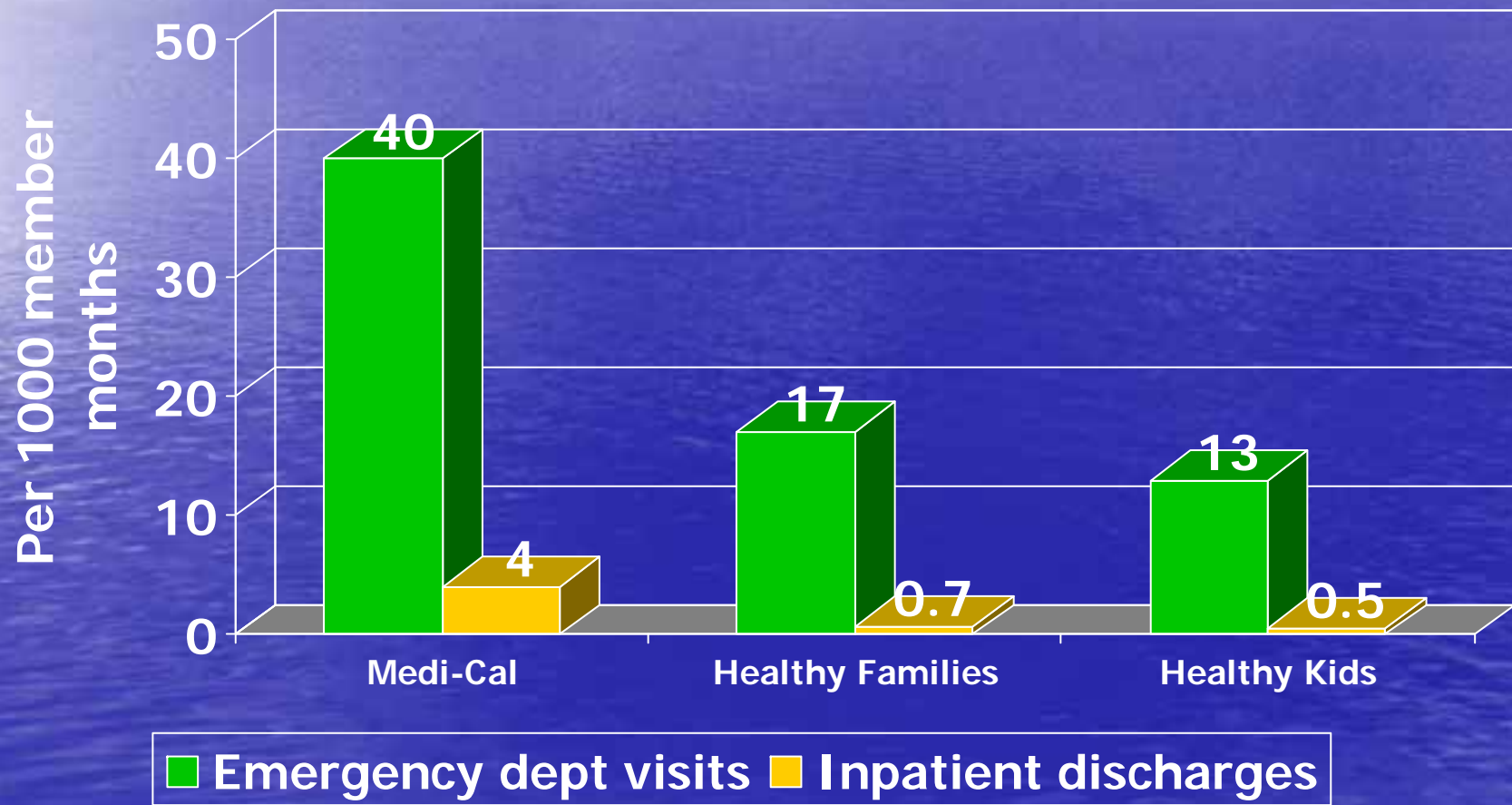


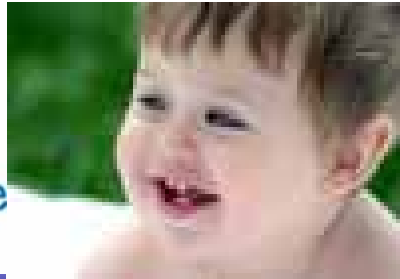
Utilization of Health Plans – 2007



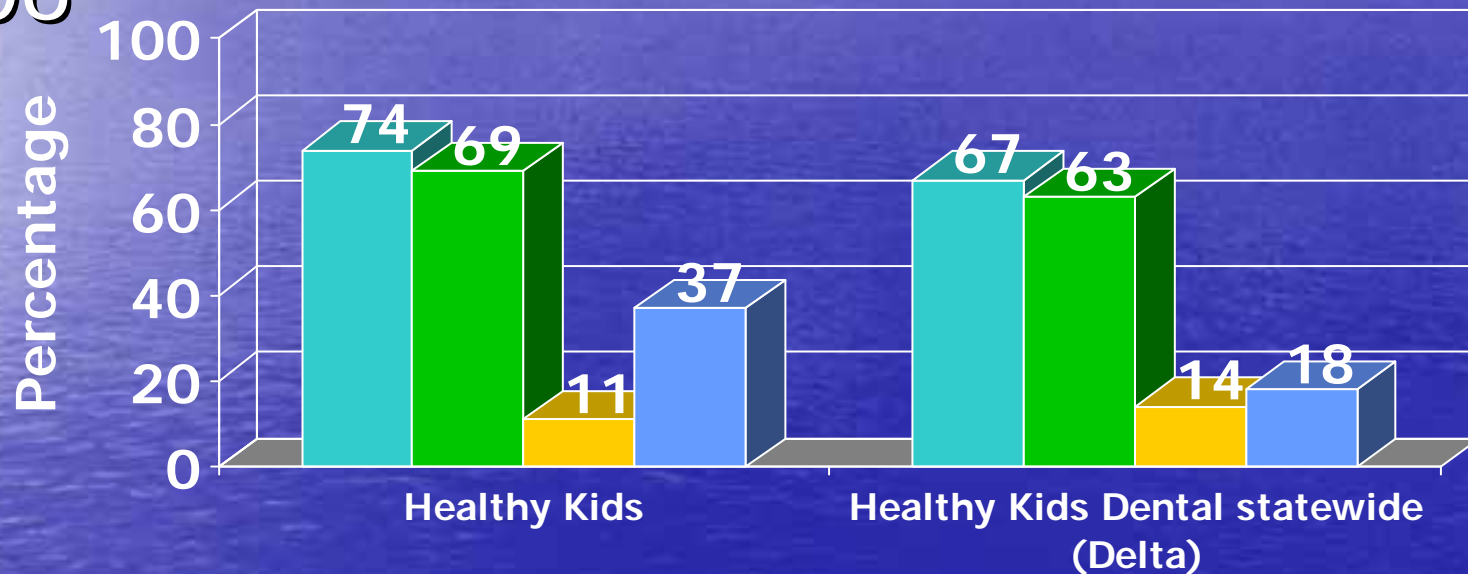


Utilization of Health Plans – 2007





Utilization of Healthy Kids Dental Plan – 2006



- Dental visit within year
- Children receiving preventive service
- Oral surgery
- Sealants (6+ years)

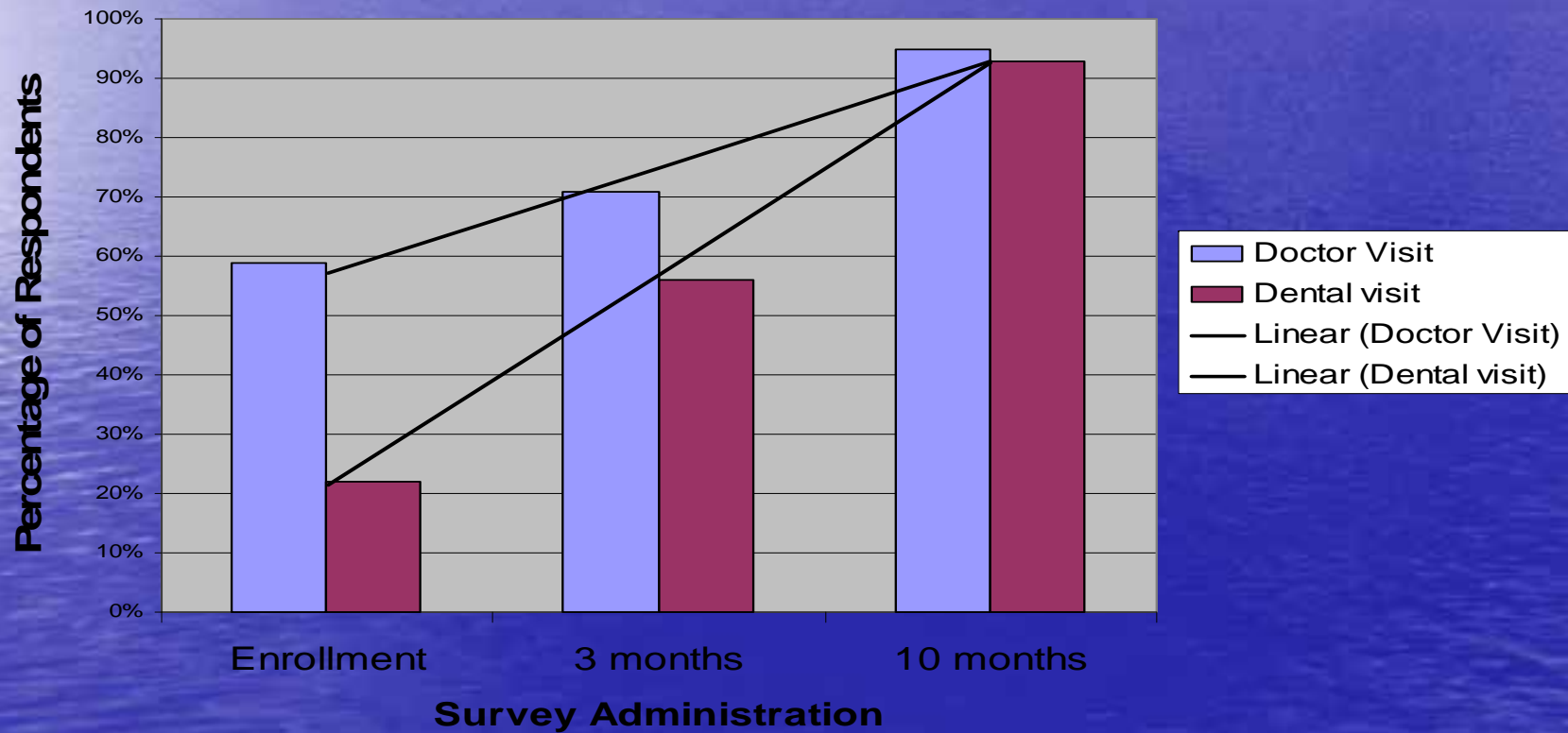
Source: Dental Utilization in California's Children's Health Initiatives' Healthy Kids Programs, 2008



Children's Health Initiative
Santa Barbara



Results of Parent Survey





Children's Health Initiative
Santa Barbara



Results of Parent Surveys

- Parents who thought child's health was excellent/very good
 - 41% at enrollment
 - 48% at 3 months
 - 75% at 10 months
- Parents who reported no absences from school
 - 56% at 3 months
 - 80% at 10 months
- Parents were very confident that they could get care
 - 80% at 3 months
 - 100% at 10 months



Healthy Kids build healthy
communities!!