

Benefit Assessments for

- County Service Area 31 – Isla Vista
- North County Lighting District – Los Alamos, Casmalia, Orcutt, unincorporated Santa Maria, and unincorporated Lompoc



County Service Area 31

- CSA 31 benefit assessment rate restored to \$12.93 in fiscal year 2008-2009
- Rate to remain unchanged for fiscal year 2012-2013
- Elimination of the Redevelopment Agency will benefit the fund by returning property tax revenue (amount to be determined)



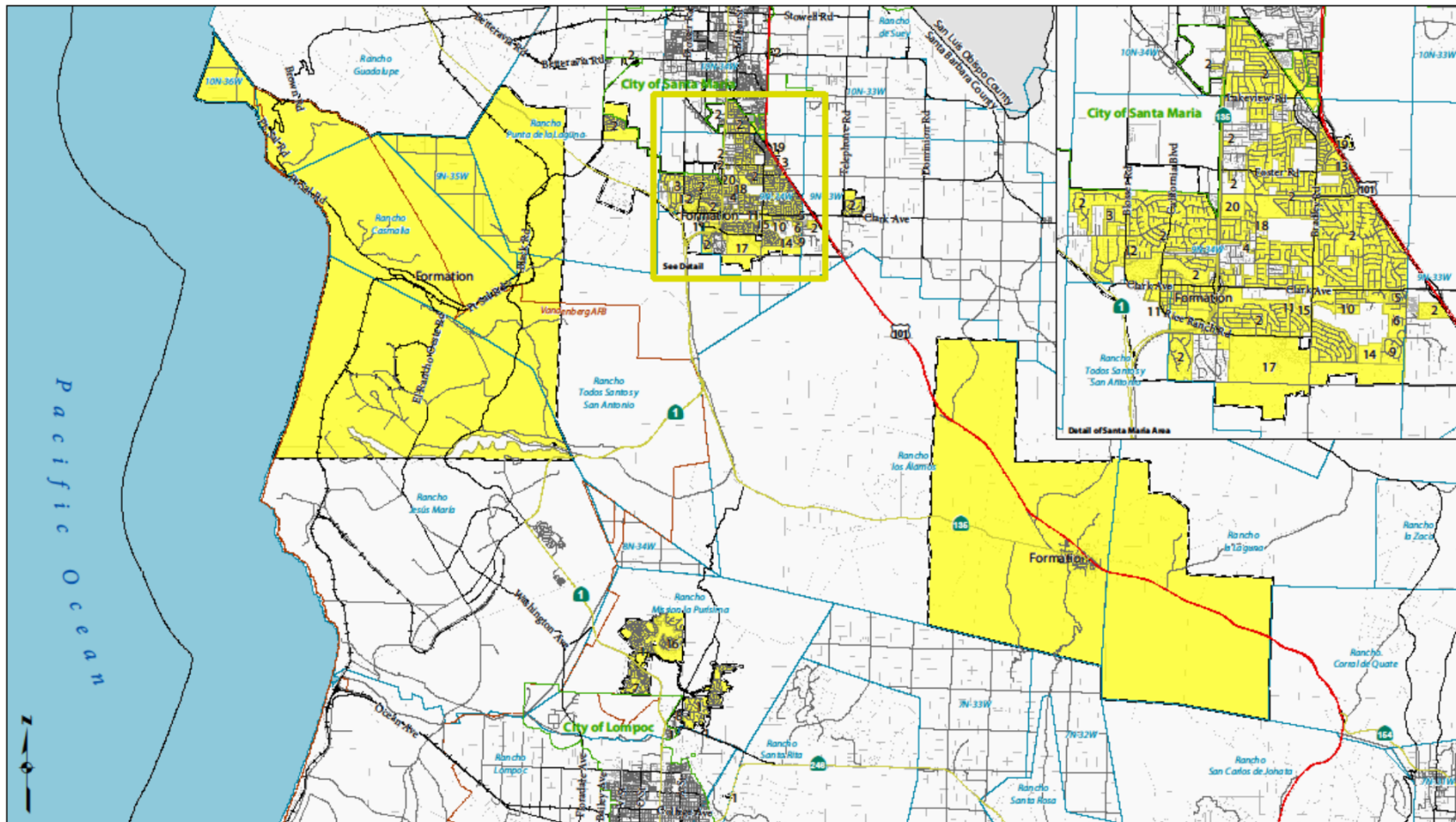
North County Lighting District



- NCLD benefit assessment set to \$0 in fiscal year 2008-2009 to reduce fund balance
- Benefit assessment proposed to remain at \$0 for fiscal year 2012-2013
- Fund balance to be monitored

Recommendations

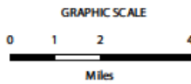
- Adopt resolution establishing streetlighting charges for County Service 31 for fiscal year 2012-2013
- Not impose the benefit assessments in the portion of the North County Lighting District that may assess fixed charges for fiscal year 2012-2013



North County Lighting District

Compiled by the Office of the County Surveyor in February of 2012. Formed by LAFCO 94-07, 6/30/1994.
 Sphere: 11/04/2010. Last Action: 20, Union Valley Parkway (Phase III) Reorg., LAFCO 11-03, 08/04/2011.
 See Boundary activity table at <http://www.countyofsb.org/pwd/pwsurveyor.aspx?id=23260>

NOTICE OF DISCLAIMER: This data is for reference only. Although every effort has been made to ensure the accuracy of information, errors and conditions originating from physical sources and from the database may be reflected in this data. Santa Barbara County shall not be liable for any errors, omissions, or damages that result from inappropriate use of this document. No level of accuracy is claimed for the boundary lines shown herein and lines should not be used to obtain coordinate values, bearings or data on.



- Legend**
- Highways
 - Roads
 - Railroads
 - Parcels
 - Sections
 - Vandenberg Air Force Base
 - Ranchos and Townships
 - City Boundaries
 - County Boundary
 - San Luis Obispo County
 - Sphere of Influence
 - Formation
 - Annexation
 - Detachment

