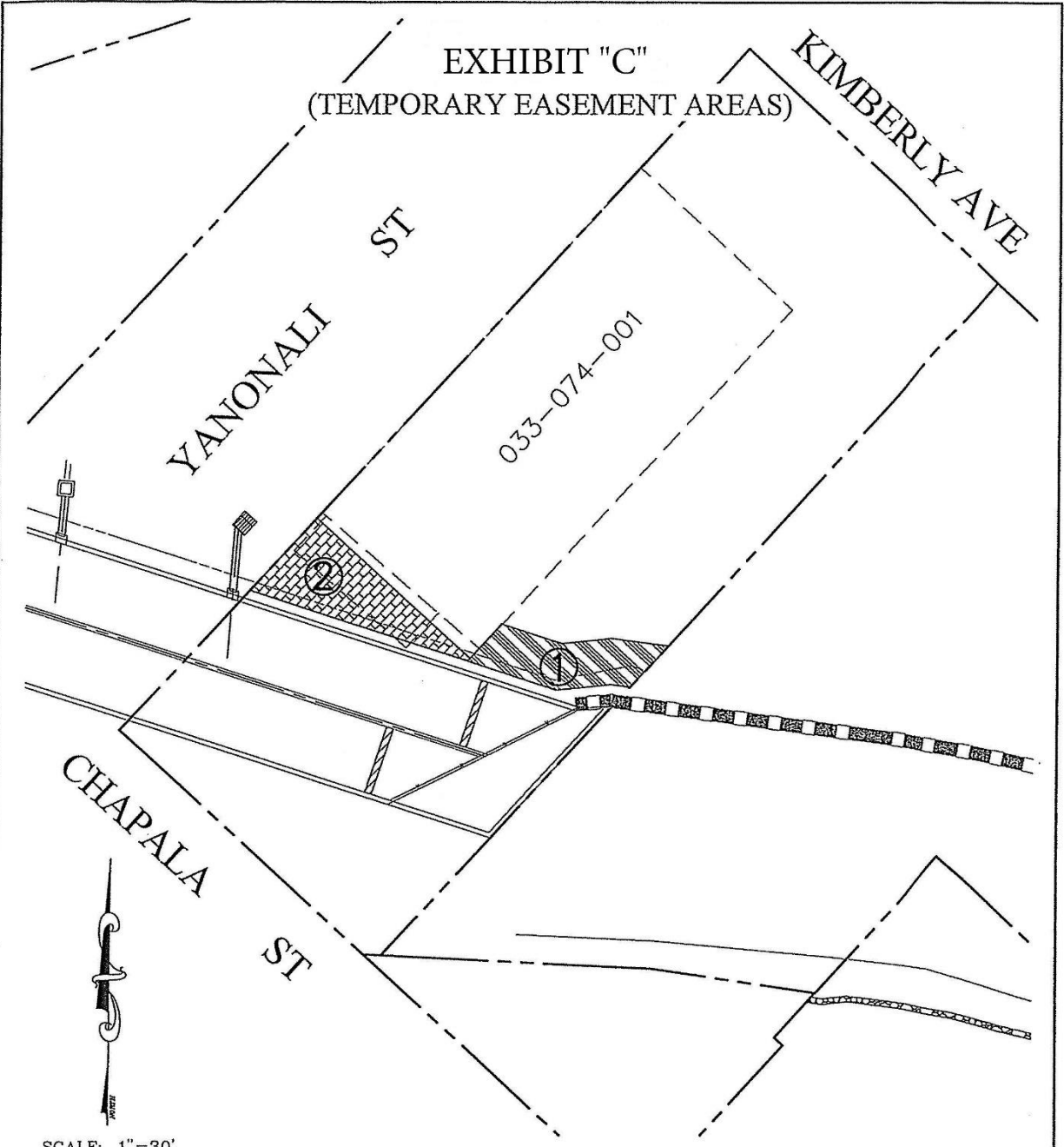


Attachment 3



ATTACHMENT 3

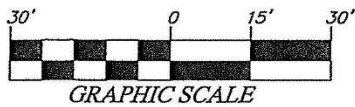
Exhibit C Diagram of Temporary Easement Areas

EXHIBIT "C"
(TEMPORARY EASEMENT AREAS)



SCALE: 1"=30'

-  TEMPORARY EASEMENT APPROX. EASEMENT AREA = 368 sq. ft.
-  TEMPORARY EASEMENT APPROX. EASEMENT AREA = 497 sq. ft.



COUNTY OF SANTA BARBARA DEPARTMENT OF PUBLIC WORKS
COUNTY SURVEYOR'S OFFICE

TEMPORARY EASEMENT AREAS

SANTA BARBARA COUNTY
FLOOD CONTROL DISTRICT
PORTION OF APN: 033-074-001
SANTA BARBARA COUNTY, CALIFORNIA