

Preschool and Child Care Scholarships for County Employees

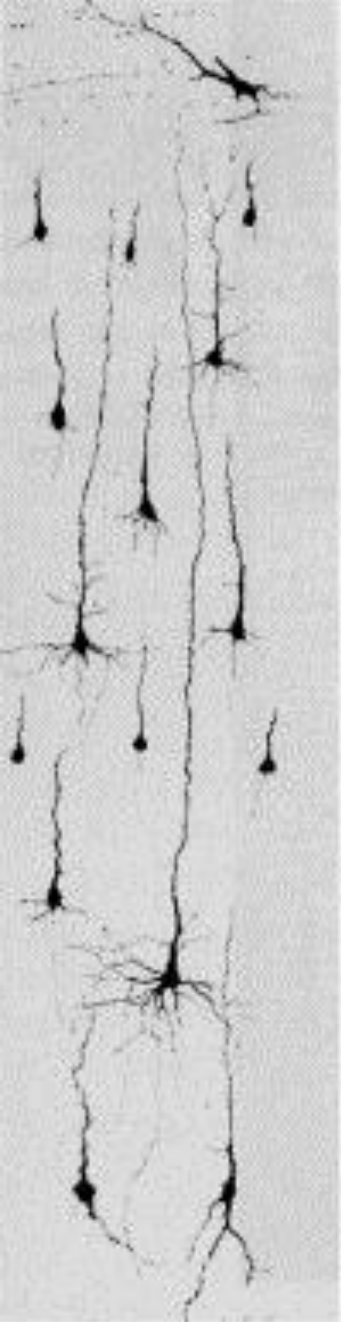
A one-year pilot program



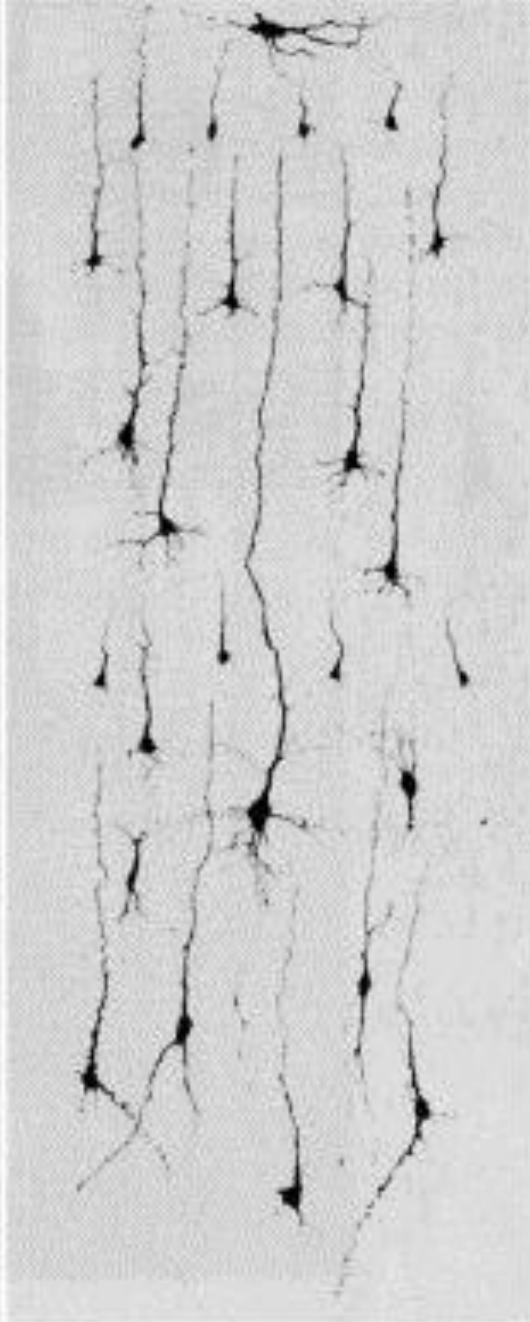
STRONGER FAMILIES
A MORE STABLE WORKFORCE
CHILDREN READY FOR SUCCESS

MARCH 15, 2016

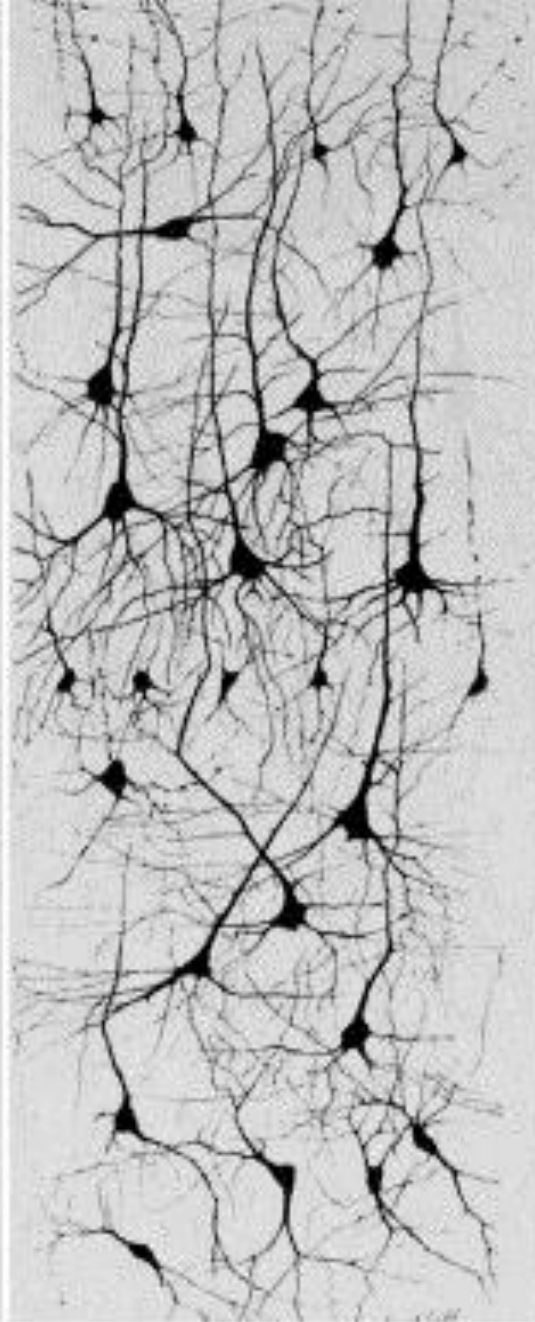




Newborn
A



1 month
B



6 months
C

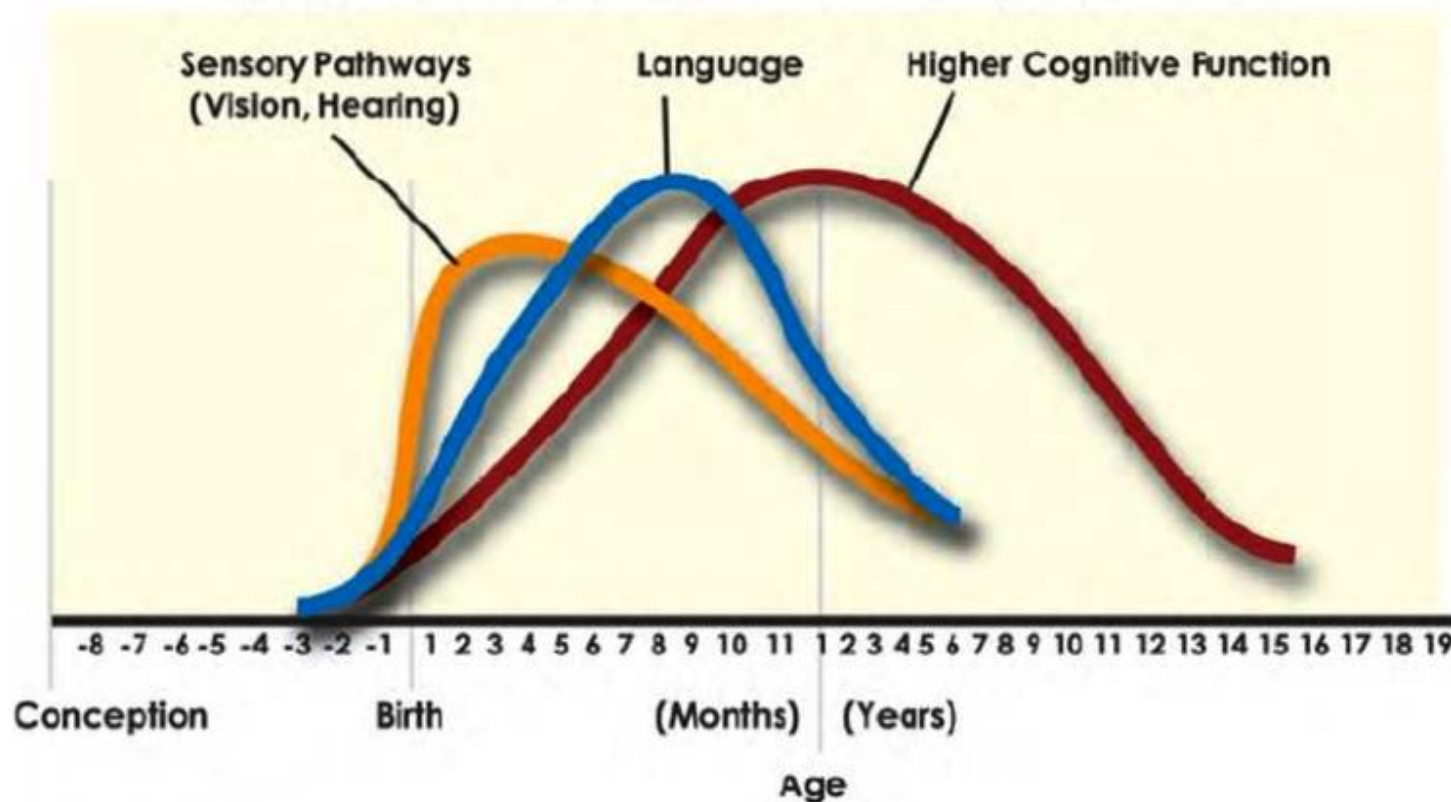


2 years
D



Human Brain Development

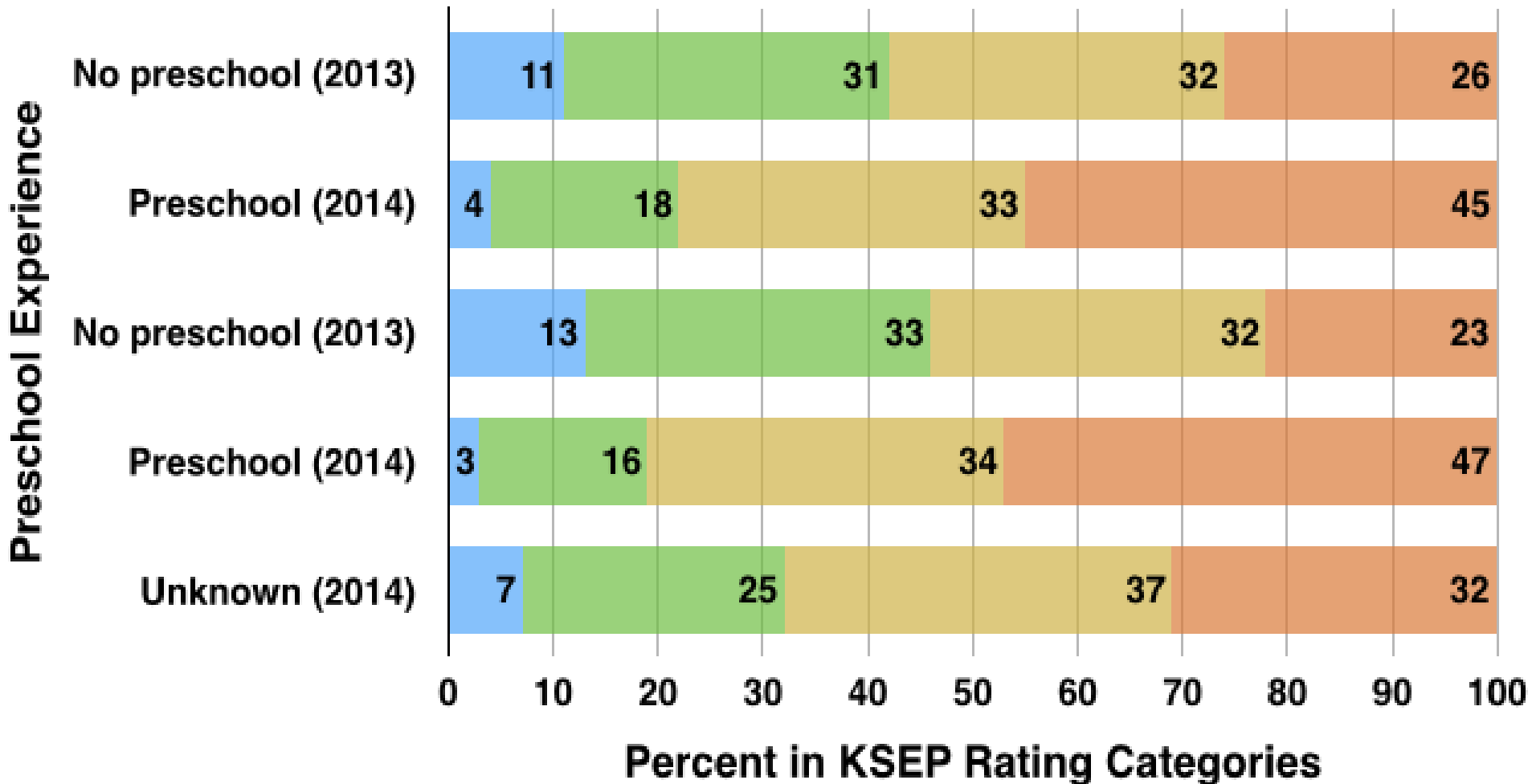
Synapse Formation Dependent on Early Experiences



Source: Nelson (2000)

KSEP Scores and Preschool Attendance

School Year 2013 and 2014



Preschool and Child Care Need vs. Capacity



Region	Infant - Toddler Need	Infant - Toddler Capacity	Pre- school Need	Pre- school Capacity	Need	Capacity
So. County	2,222	687	4,452	4,098	6,674	4,785
SY Valley	221	43	482	464	703	507
Lompoc	942	190	1,877	984	2,819	1,174
No County	3,143	575	6,062	3,136	9,205	3,711
Countywide	6,528	1,495	12,873	8,682	19,401	10,177

Source: SB County Child Care Planning Council

Monthly Cost of Care

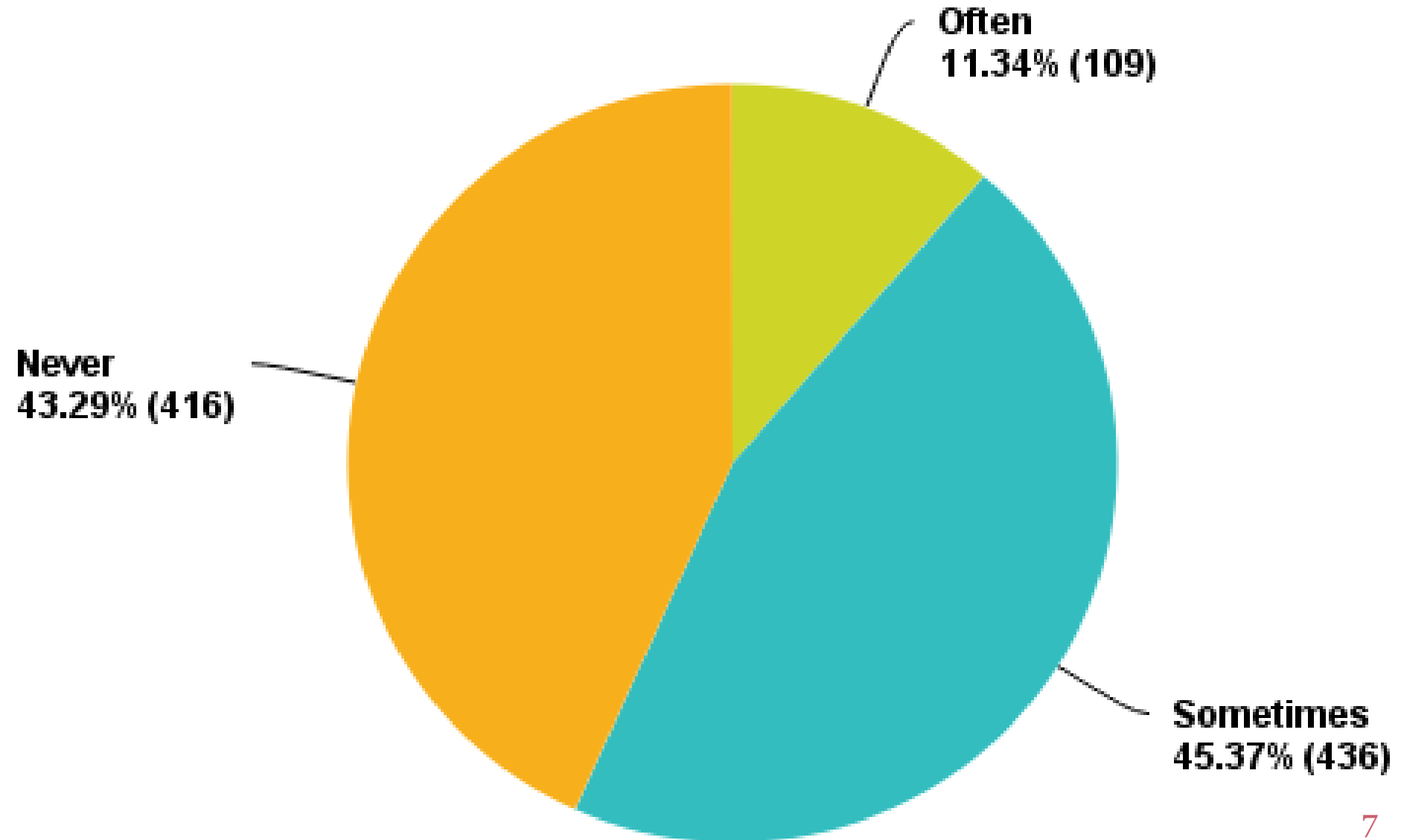


	Infant Centers	Infant FCC*	Pre-school Centers	Pre-school FCC*
No. County/Lompoc	\$1,138	\$834	\$559	\$763
So. County/ SY Valley	\$1,173	\$1,037	\$845	\$888
Countywide	\$1,171	\$927	\$788	\$826

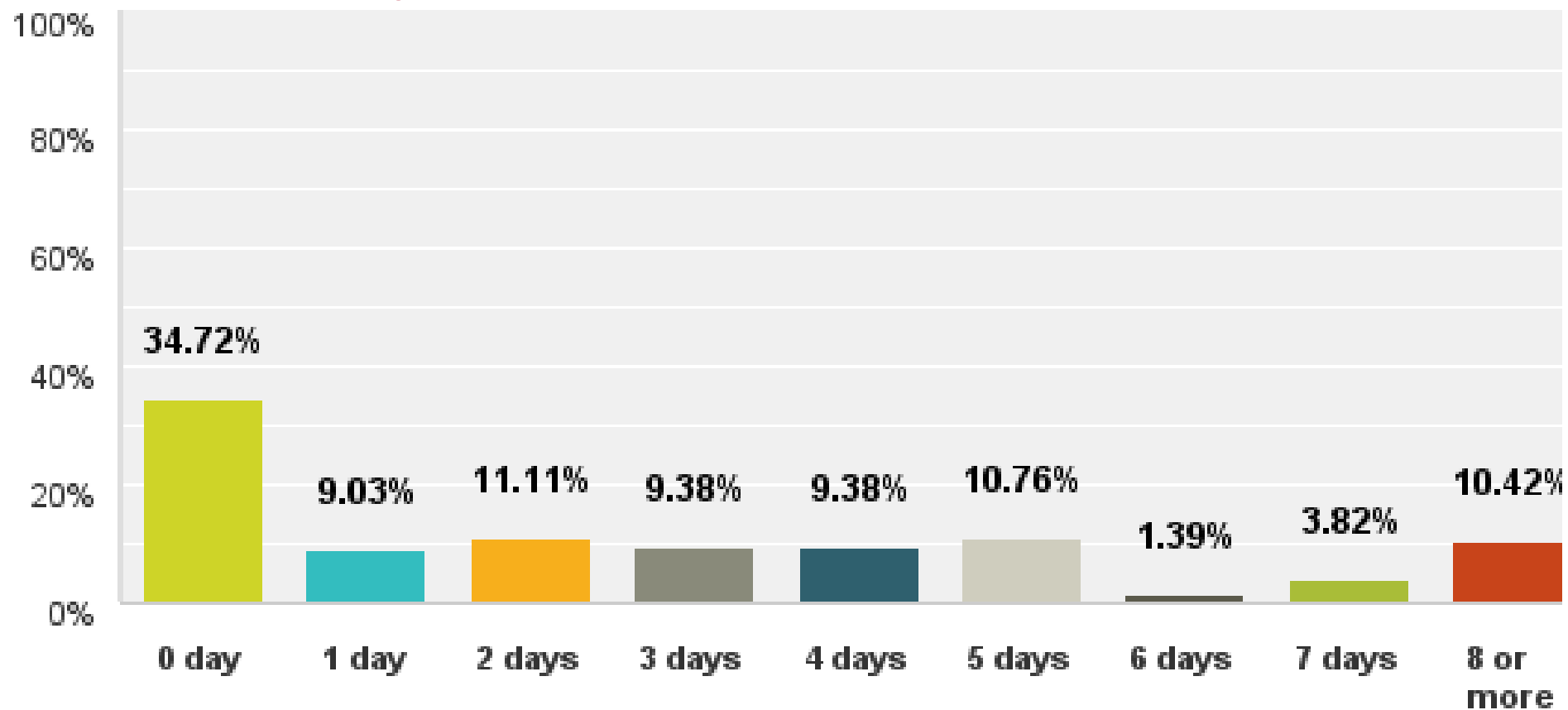
FCC = In-home Family Child Care

Source: SB County Children's Resource and Referral, August 2015

Work negatively impacted by child care responsibilities of coworkers



Missed Days of Work and Cost of Absenteeism



- 65% of parents missed at least one day of work due to breakdown in child care
- 3.69 days each on average
- 1,062 days for 288 respondents
- \$353,000 in lost time last year due to breakdown in child care

Pilot Program Basic Model



- \$200,000 in general funds to support scholarships for county employees
- 100 scholarships for \$2,000 each – first-come/first-served
- Prioritized for employees w/100% MFI (\$73K)
- First 5 administers program or contracts out to oversee it
- First 5 covers cost of administering program in first year
 - Pending First 5 approval

Next Steps



- Seek Board direction and consensus on March 15
- March/April/May develop program specifics and design final model for implementation
- Return to First 5 Commission in April/May to confirm willingness to cover program administration
- June – Return to Board with final pilot program model as part of the budget process